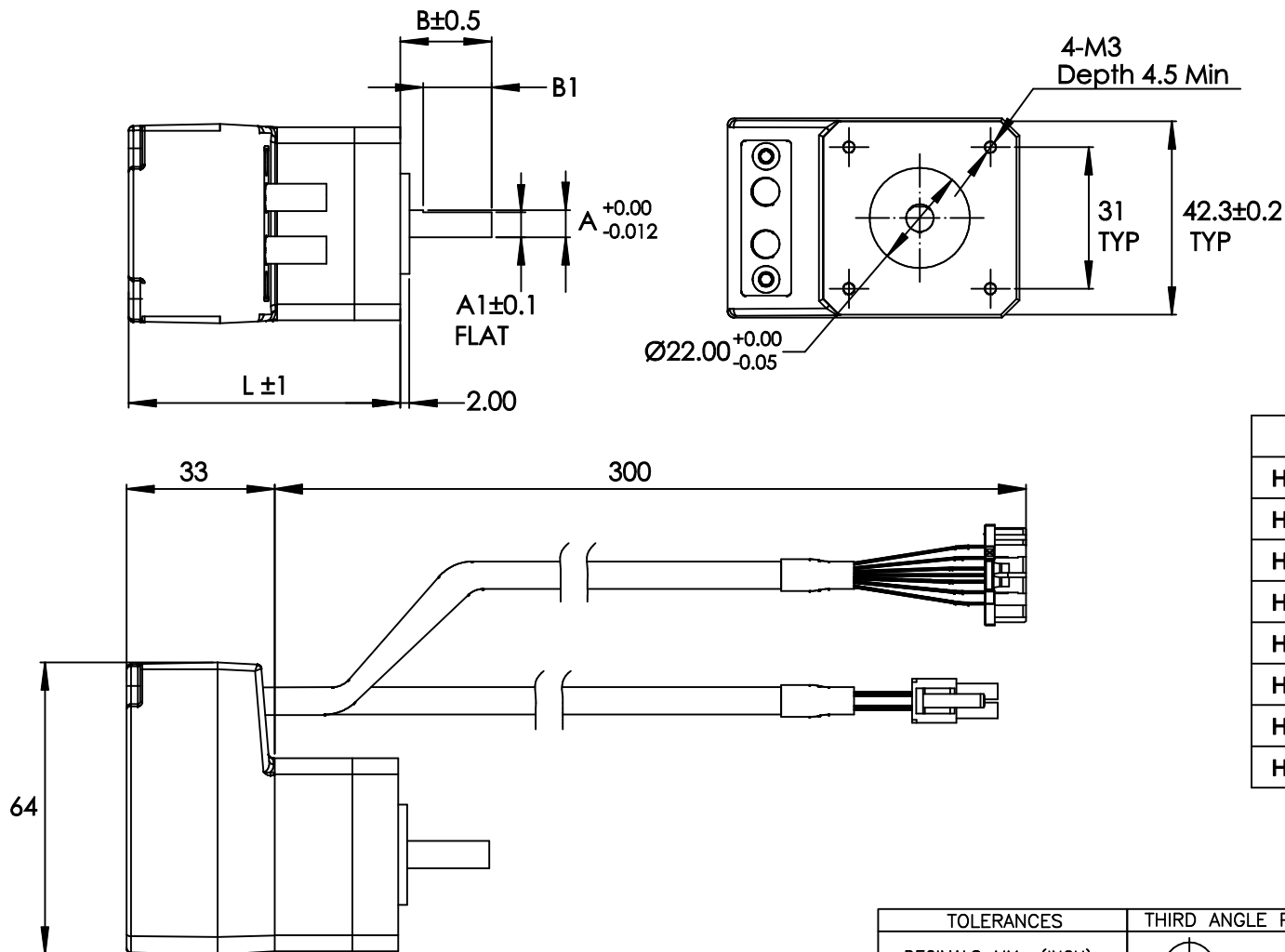

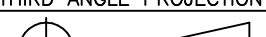


REVISIONS				
ECO NO.	REV	DESCRIPTION	DATE	APPROVED
7494	A	INITIAL RELEASE	11/11/16	J.KORDIK



Unit:mm	A	A1	B	B1	L
HT17-SS1DGA	$\varnothing 6$	5.5	20	15	59.5
HT17-SS1DGB	$\varnothing 5$	4.5	24	15	59.5
HT17-SS2DGA	$\varnothing 6$	5.5	20	15	65
HT17-SS2DGB	$\varnothing 5$	4.5	24	15	65
HT17-SS3DGA	$\varnothing 6$	5.5	20	15	73.5
HT17-SS3DGB	$\varnothing 5$	4.5	24	15	73.5
HT17-SS4DGA	$\varnothing 6$	5.5	20	15	89
HT17-SS4DGB	$\varnothing 5$	4.5	24	15	89

HT17-SSxDGx

TOLERANCES		THIRD ANGLE PROJECTION		 APPLIED MOTION PRODUCTS, INC.		
DECIMALS: MM (INCH) X.XXX = ±0.013 (.005) X.XX = ±0.25 (.01) X.X = ±2.5 (0.1) ANGLES: MACH. = ±.5° CHAM. = ±5°				STEP—SERVO MOTOR		
COMPUTER DATA BASE DRAWING		APPROVALS	DATE			
		DRAWN <i>R. JONEZ</i>	<i>8/15/16</i>	B	DWG NO. HT17—SSxDGx	REV A
		CHECKED				
		APPROVED		SCALE: NONE		SHEET 1 OF 1



# Mouser Electronics

Authorized Distributor

Click to View Pricing, Inventory, Delivery & Lifecycle Information:

## Applied Motion:

[HT17-SS1DGA](#) [HT17-SS1DGB](#) [HT17-SS2DGA](#) [HT17-SS2DGB](#) [HT17-SS3DGA](#) [HT17-SS3DGB](#) [HT17-SS4DGA](#)  
[HT17-SS4DGB](#)