

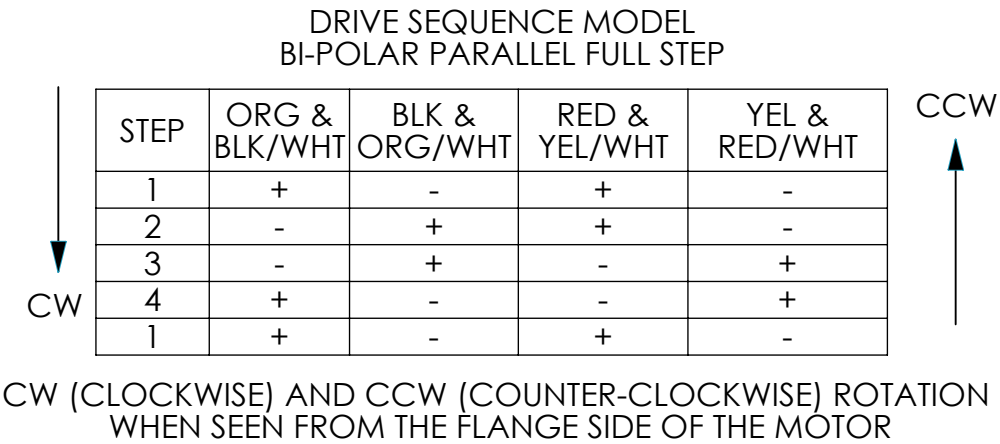
SPECIFICATION	
NUMBER OF PHASES: 4	ROTOR INERTIA: 57 g-cm ² (0.31 oz-in ²) NOM
STEPS PER REVOLUTION: 200	DETENT TORQUE: 152.9 g-cm (2.12 oz-in) MIN
STEP ANGLE: 1.8°	INSULATION CLASS: B
STEP TO STEP ACCURACY: 0.09°	BEARINGS: ABEC 3, DOUBLE SHIELDED
POSITION ACCURACY: 0.09°	TEMP. RISE: 80°C MAX.
HYSTERESIS: N/A%	OPERATING TEMP. RANGE: -20 TO +50°C
SHAFT RUNOUT: 0.03 mm T.I.R. MAX	STORAGE TEMP. RANGE: -30 TO +70°C
RADIAL PLAY: 0.02 mm MAX (0.5 kg RADIAL LOAD)	RELATIVE HUMIDITY RANGE: 15 TO 85%
END PLAY: 0.08 mm MAX (0.5 kg AXIAL LOAD)	WEIGHT: 280 g (9.8 oz) APPROXIMATE

CONNECTION	RESISTANCE PER PHASE (ohm $\pm 10\%$) 7	INDUCTANCE PER PHASE (mH $\pm 20\%$) 8	RATED CURRENT (Amp)	HOLDING TORQUE (Nm MIN) 1	HOLDING TORQUE (oz-in) 1
BI-POLAR SERIES	7.0	12	0.85	0.37	52.40
BI-POLAR PARALLEL	1.7	3	1.70	0.37	52.40
UNI-POLAR	3.5	3	1.20	0.29	41.07

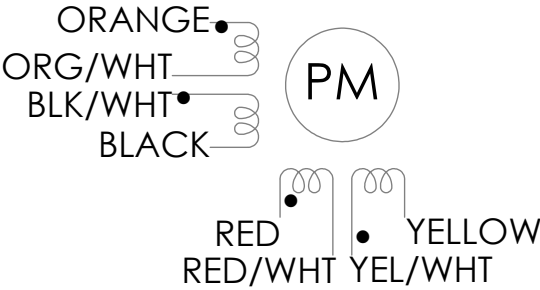
NOTES, UNLESS OTHERWISE SPECIFIED:


- 1 MEASUREMENTS MADE AT RATED CURRENT IN EACH PHASE.
- 2 BETWEEN ANY TWO ADJACENT FULL STEP POSITIONS.
- 3 MAXIMUM ERROR IN 360°.
4. HIPOT 500 VAC, 60Hz FOR ONE MINUTE.
- 5 LEADS: 8, 26 AWG, 7 STRAND MIN. UL AND CSA APPROVED. UL 1430 OR UL 3265
6. INSULATION RESISTANCE: 100 MEGOHMS MIN AT 500 VDC.
- 7 AS MEASURED ACROSS EACH PHASE.
- 8 AS MEASURED ACROSS EACH PHASE USING AN A.C. INDUCTANCE BRIDGE AT 1KHz.
- 9 AS MEASURED BY THE CHANGE IN RESISTANCE METHOD, WITH RATED CURRENT APPLIED TO 2 PHASES: WITH MOTOR AT REST.
- 10 ENCODER INSTALLED PER AMP ASSEMBLY PRACTICES. ENCODER CABLE SOLD SEPARATELY.
11. ROTOR AND STATOR LAMINATED CONSTRUCTION.
12. THIS MOTOR IS MANUFACTURED IN COMPLIANCE WITH CURRENT EU RoHS DIRECTIVE.
- 13 MOTOR LABEL TO INCLUDE AMP LOGO, AMP WEBSITE ADDRESS, "RoHS" COMPLIANCE LOGO, AMP P/N, "MADE IN (COUNTRY)", AND DATE CODE.

REVISIONS				
ECO #	REV.	DESCRIPTION	DATE	APPROVED
8675	A	INITIAL RELEASE	6/15/21	LEO. L



WIRING DIAGRAM



<div></div> <div>PROPRIETARY AND CONFIDENTIAL</div> <div>THE INFORMATION CONTAINED IN THIS DRAWING IS THE SOLE PROPERTY OF APPLIED MOTION PRODUCTS. ANY REPRODUCTION IN PART OR AS A WHOLE WITHOUT THE WRITTEN PERMISSION OF APPLIED MOTION PRODUCTS IS PROHIBITED.</div>	UNLESS OTHERWISE SPECIFIED:		NAME		DATE		TITLE: STEPPER MOTOR OUTLINE				
	DIMENSIONS ARE IN MILLIMETERS		DRAWN		ALAN. N					6/15/20	
	TOLERANCES:		CHECKED		YANN. L					6/15/21	
	ANGULAR: ± 0.5		COMMENTS:								
	ONE PLACE DECIMAL ± 0.25										
	TWO PLACE DECIMAL ± 0.13										
	THIRD ANGLE PROJECTION										
	MATERIAL										
	FINISH										
DO NOT SCALE DRAWING											
SIZE			DWG. NO.			REV					
B			HT17-271D-WAA			A					
SCALE: 1:1			WEIGHT:			SHEET 1 OF 2					

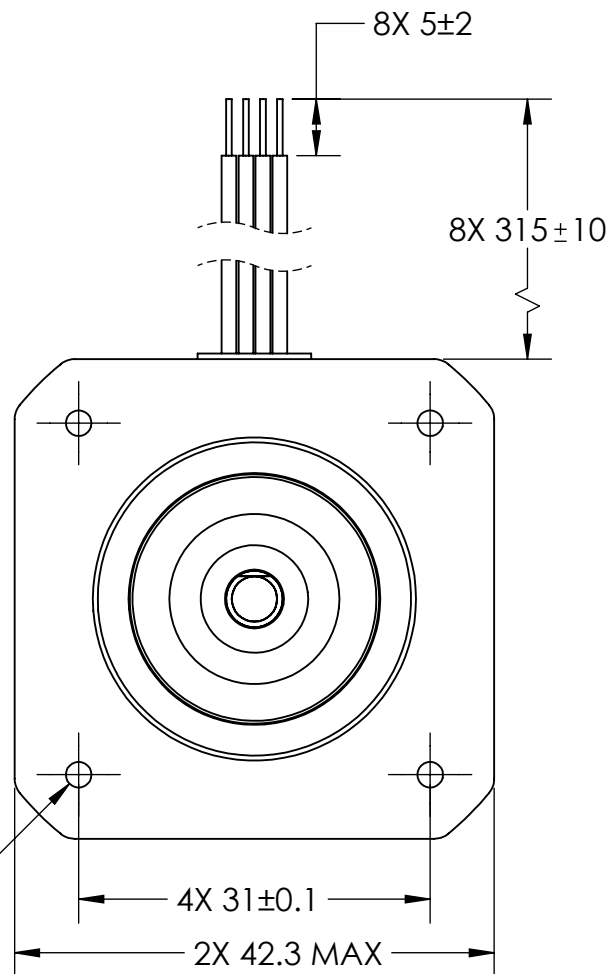
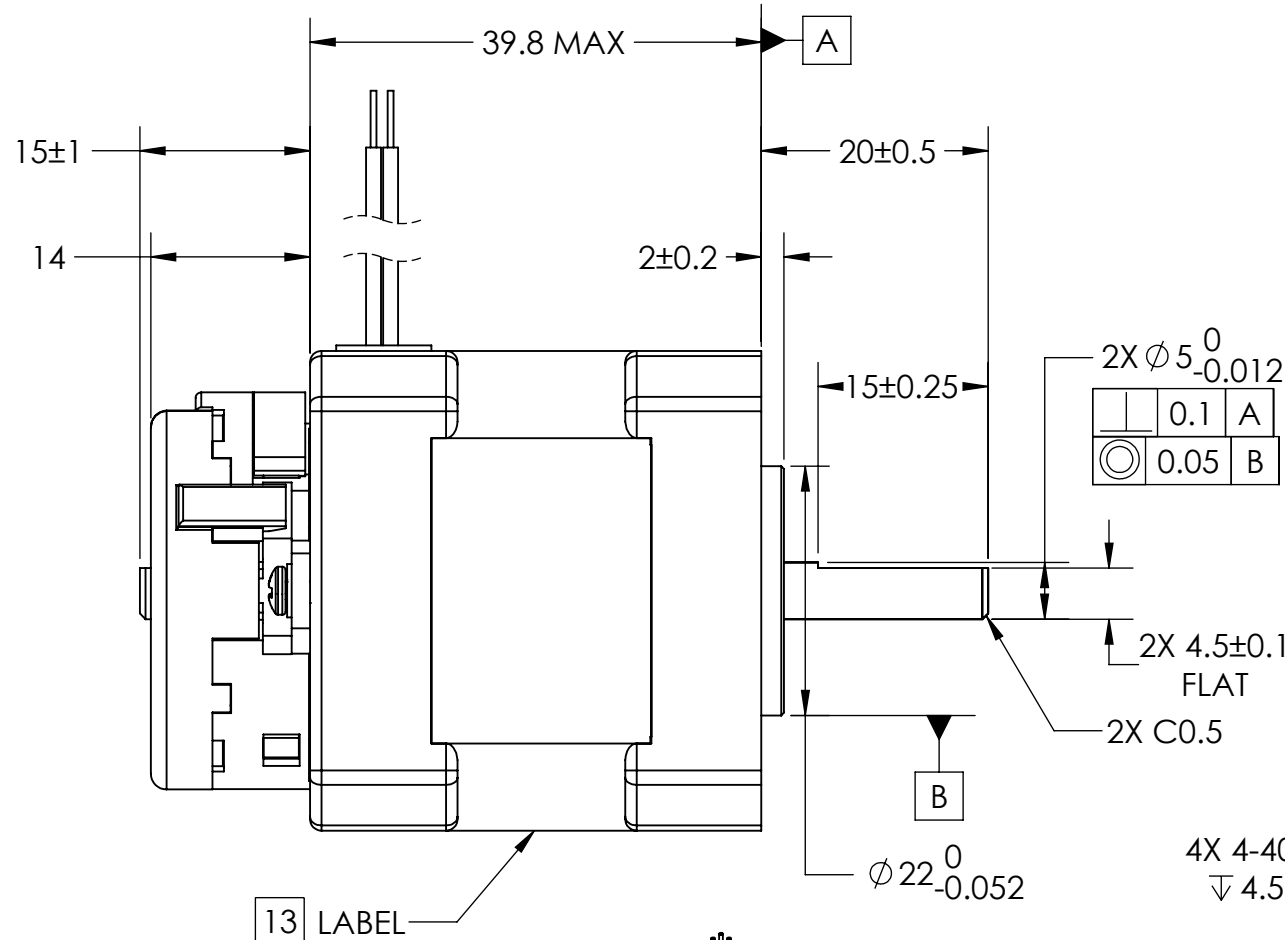
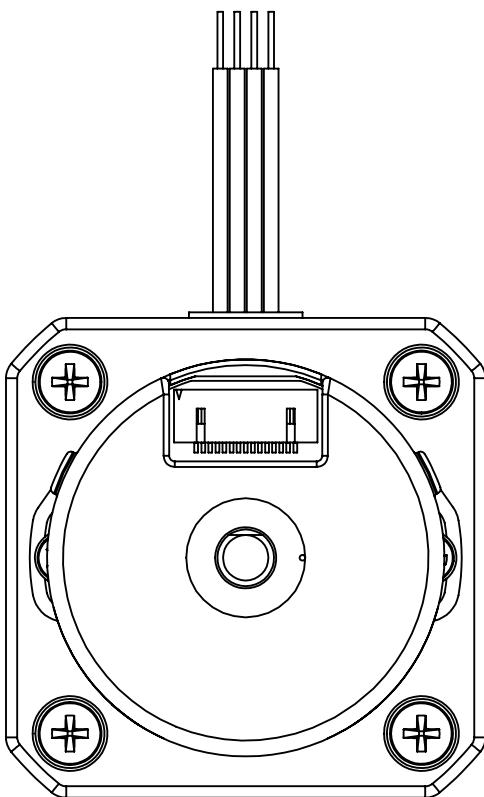
4

3

2

1

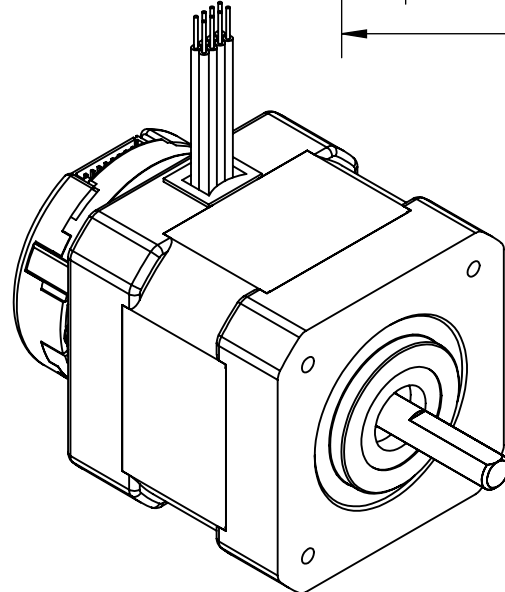
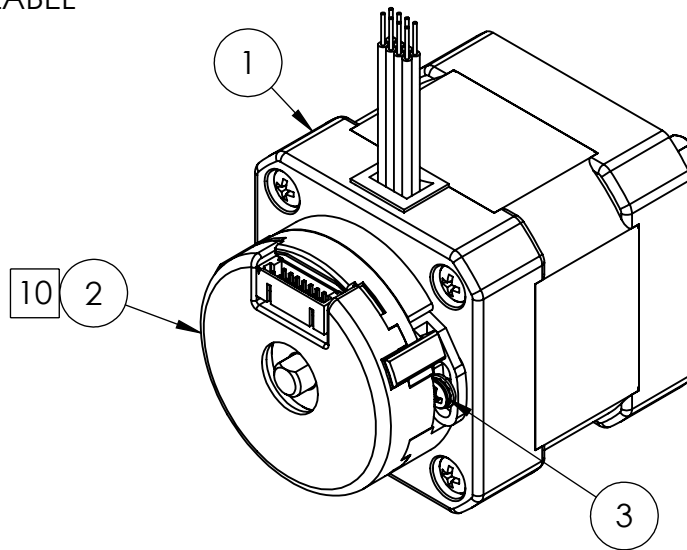
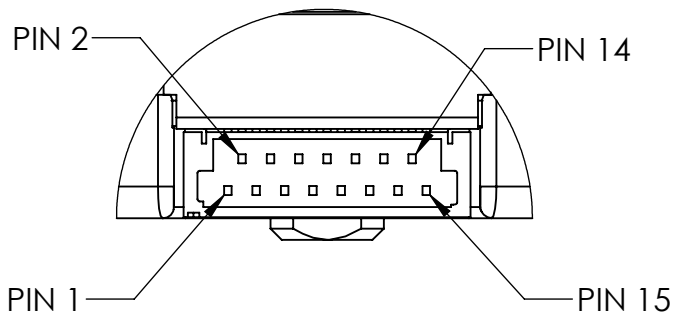
B



B

A

CONNECTOR	
PIN #	SIGNAL
1	CH A
2	CH A-
3	CH B
4	CH B-
5	INDEX
6	INDEX-
7	CH U
8	CH U-
9	CH V
10	CH V-
11	CH W
12	CH W-
13	+Vcc
14	GND
15	N/A



A

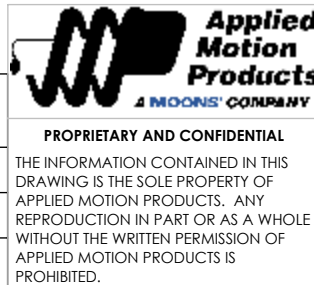
4

3

2

1

ITEM NO.	PART NUMBER	QTY.
1	HT17-271D	1
2	ENCODER 970-1012	1
3	SCREW 2-56 X .1875 W-TOOTH LOCK WASHER (90403A077) OR EQUIVALENT	2



UNLESS OTHERWISE SPECIFIED:	
DIMENSIONS ARE IN MILLIMETERS	
TOLERANCES:	
ANGULAR: ± 0.5	
ONE PLACE DECIMAL ± 0.25	
TWO PLACE DECIMAL ± 0.13	
THIRD ANGLE PROJECTION	
MATERIAL	
FINISH	
DO NOT SCALE DRAWING	

	NAME	DATE
DRAWN	ALAN. N	6/15/20
CHECKED	YANN. L	6/15/21
COMMENTS:		

TITLE:		
STEPPER MOTOR OUTLINE		
SIZE	DWG. NO.	REV
B	HT17-271D-WAA	A
SCALE: 1:2	WEIGHT:	SHEET 2 OF 2

Mouser Electronics

Authorized Distributor

Click to View Pricing, Inventory, Delivery & Lifecycle Information:

[Applied Motion:](#)

[HT17-271D-WAA](#)