

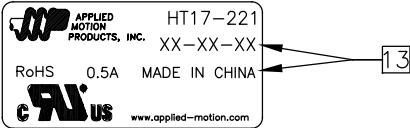
SPECIFICATIONS:					
NUMBER OF PHASES: 2			ROTOR INERTIA: 38 g-cm <sup>2</sup> ( 0.21 oz-in <sup>2</sup> ) NOM		
STEPS PER REVOLUTION: 400			DETENT TORQUE: 12 mNm ( 1.7 oz-in) MIN		
STEP ANGLE: 0.9°			BEARINGS: 625ZZ		
STEP TO STEP ACCURACY: ±0.045°			INSULATION CLASS: B		
POSITIONAL ACCURACY: ±5%			HYSTERESIS: N/A%		
SHAFT RUNOUT: 0.03 mm T.I.R. MAX			TEMP. RISE: 80 °C MAX.		
RADIAL PLAY: 0.02 mm MAX (.5KG RADIAL LOAD)			OPERATING TEMP. RANGE: -20 TO +50 °C		
END PLAY: 0.08 mm MAX (.5KG AXIAL LOAD)			STORAGE TEMP. RANGE: -30 TO +70 °C		
MAXIMUM RADIAL LOAD: 21N ( 4.72lb)			RELATIVE HUMIDITY RANGE: 15 TO 85 %		
MAXIMUM AXIAL LOAD: 10N ( 2.25lb)			WEIGHT: 0.23 kg ( 0.51 lb)		
[7]		[8]		[1]	
[1]		[8]		[1]	
SPECIFICATION		RESISTANCE PER PHASE (ohm ±10%)		INDUCTANCE PER PHASE (mH ±20%)	
CONNECTION		RATED CURRENT (amp)		HOLDING TORQUE (Nm MIN)	
BI-POLAR SERIES		20		35	
		0.5		0.26	
				36.82	

NOTES, UNLESS OTHERWISE SPECIFIED:

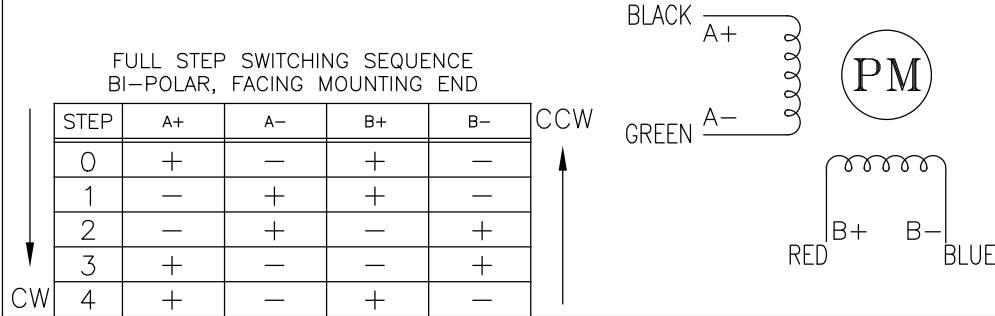
- [1] MEASUREMENTS MADE AT RATED CURRENT IN EACH PHASE.  
[2] BETWEEN ANY TWO ADJACENT FULL STEP POSITIONS.  
[3] MAXIMUM ERROR IN 360°.  
4. HIPOT 500 VAC, 60 Hz FOR ONE MINUTE.  
5. LEADS: 4, AWG 26, 7 STRAND MIN., UL AND CSA APPROVED, UL 1007  
6. INSULATION RESISTANCE: 100 MEGOHMS MIN AT 500 VDC.  
[7] AS MEASURED ACROSS EACH PHASE.  
[8] AS MEASURED ACROSS EACH PHASE USING AN A.C. INDUCTANCE BRIDGE AT 1 KHz.  
[9] AS MEASURED BY THE CHANGE IN RESISTANCE METHOD, WITH RATED CURRENT APPLIED TO 2 PHASES; WITH MOTOR AT REST.  
[10] ADD "D" TO END OF PART NUMBER IF DOUBLE SHAFT IS REQUIRED. ENCODER HOLES INCLUDED WITH REAR SHAFT VERSION ONLY.  
11. ROTOR & STATOR LAMINATED CONSTRUCTION.  
12. THIS MOTOR IS MANUFACTURED IN COMPLIANCE WITH THE CURRENT EU RoHS DIRECTIVE.  
[13] MOTOR LABEL TO INCLUDE "ROHS" COMPLIANT, AMP P/N, 'MADE IN (COUNTRY OF ORIGIN)', AND DATE CODE.  
14. HIGH TORQUE MOTOR DESIGN

REVISIONS				
ECO NO.	REV	DESCRIPTION	DATE	APPROVED
6947	A	PRELIMINARY RELEASE	4/11/14	D.MACLEOD
7048	B	ERROR CORRECTION	8/11/14	D.MACLEOD
7446	C	REVISE NOTE 12	6/6/16	J KORDIK
8250	D	ADD UL MARK, SPECS	6/5/19	J KORDIK
—	—	—	—	—
—	—	—	—	—
—	—	—	—	—
—	—	—	—	—
—	—	—	—	—
—	—	—	—	—
—	—	—	—	—

LABEL DETAIL



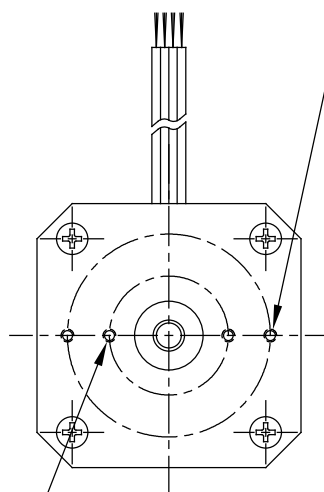
PHASE DETAIL



CONTRACT NO. —		APPLIED MOTION PRODUCTS, INC.		
APPROVALS	DATE	STEP MOTOR OUTLINE		
DRAWN K.KESLER	8/11/14			
CHECKED —	—	B	COMPUTER DATA BASE DRAWING	DWG NO. HT17-221
APPROVED —	—			REV D
APPROVED —	—		SCALE: NONE	SHEET 1 OF 2

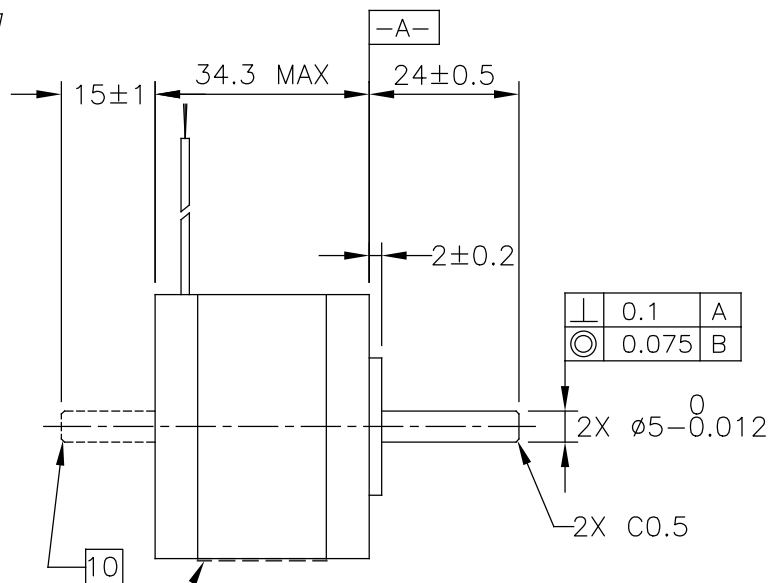
2X #2-56 UNC  
TAP THRU EQ.SP.  
ON A Ø32.5 B.C.

10



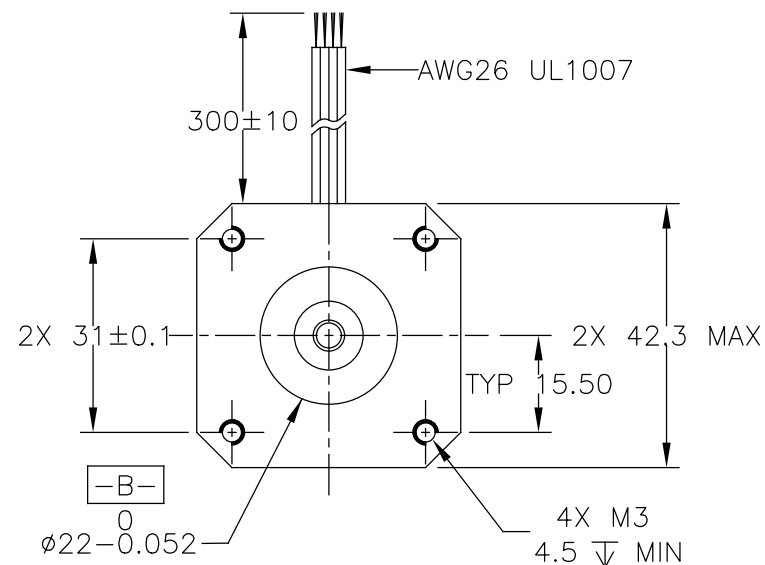
2X #2-56 UNC  
TAP THRU EQ.SP.  
ON A Ø19.05 B.C.

10



10



LABEL 13



-B-

Ø22-0.052

4X M3  
4.5 MIN

TOLERANCES		THIRD ANGLE PROJECTION		 APPLIED MOTION PRODUCTS, INC.				
*ALL DIMENSIONS IN MM  DECIMALS: MM X.XX = ±0.13 X.X = ±0.25  ANGLES: MACH. = ±0.5° CHAM. = ±5°				STEP MOTOR OUTLINE				
		APPROVALS					DATE	
		DRAWN K.KESLER		8/11/14		B      DWG NO.      HT17-221      REV D		
		CHECKED —		—				
COMPUTER DATA BASE DRAWING		APPROVED —		SCALE: NONE      SHEET 2 OF 2				

# Mouser Electronics

Authorized Distributor

Click to View Pricing, Inventory, Delivery & Lifecycle Information:

[Applied Motion:](#)

[HT17-221D](#) [HT17-221](#)