

SPECIFICATIONS:	
NUMBER OF PHASES: 2	ROTOR INERTIA: 460 g-cm ² (2.52 oz-in ²) NOM
STEPS PER REVOLUTION: 200	INSULATION CLASS: B
STEP ANGLE: 1.8°	TEMP. RISE: 80 °C MAX.
STEP TO STEP ACCURACY: ±0.09°	OPERATING TEMP. RANGE: -20 TO +50 °C
POSITIONAL ACCURACY: ± 5 %	STORAGE TEMP. RANGE: -30 TO +70 °C
AXIAL MOVEMENT: 0.1mm MAX (100N AXIAL FORCE)	RELATIVE HUMIDITY RANGE: 15 TO 85 %
BEARING SIZE: 28*15*7 mm	WEIGHT: 1.1 kg (2.43 lb)
SHAFT MATERIAL: SUS303	

SPECIFICATION CONNECTION	7	8	1	1
	RESISTANCE PER PHASE (ohm ±10%)	INDUCTANCE PER PHASE (mH ±20%)	RATED CURRENT (amp)	HOLDING TORQUE (Nm MIN) (oz-in Min)
BI-POLAR SERIES	1.1	4.5	3	2.3

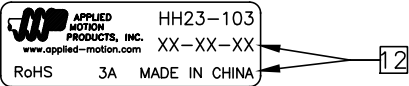
NOTES, UNLESS OTHERWISE SPECIFIED:

- 1 MEASUREMENTS MADE AT RATED CURRENT IN EACH PHASE.
- 2 BETWEEN ANY TWO ADJACENT FULL STEP POSITIONS.
- 3 MAXIMUM ERROR IN 360°.
- 4 HIPOT 500 VAC, 60 Hz FOR ONE MINUTE.
- 5 CONNECTOR: JSTS6B-XH-A-1(LF)(SN)
- 6 INSULATION RESISTANCE: 100 MEGOHMS MIN AT 500 VDC.
- 7 AS MEASURED ACROSS EACH PHASE.
- 8 AS MEASURED ACROSS EACH PHASE USING AN A.C. INDUCTANCE BRIDGE AT 1 KHz.
- 9 AS MEASURED BY THE CHANGE IN RESISTANCE METHOD, WITH RATED CURRENT APPLIED TO 2 PHASES; WITH MOTOR AT REST.
- 10 ROTOR & STATOR LAMINATED CONSTRUCTION.
- 11 THIS MOTOR IS MANUFACTURED IN COMPLIANCE WITH THE CURRENT EU RoHS DIRECTIVE.
- 12 MOTOR LABEL TO INCLUDE "ROHS" COMPLIANT, AMP P/N, 'MADE IN (COUNTRY OF ORIGIN)', AND DATE CODE.
- 13 HIGH TORQUE MOTOR DESIGN.

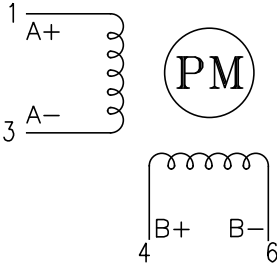
HH23-103

REVISIONS				
ECO NO.	REV	DESCRIPTION	DATE	APPROVED
7068	A	PRELIMINARY RELEASE	10/24/14	D.MACLEOD
7445	B	REVISE NOTE 11	6/6/16	J.KORDIK
8359	C	1ST ANGLE TO 3RD	10/31/19	J.KORDIK
—	—	—	—	—
—	—	—	—	—
—	—	—	—	—
—	—	—	—	—
—	—	—	—	—
—	—	—	—	—
—	—	—	—	—
—	—	—	—	—

LABEL DETAIL



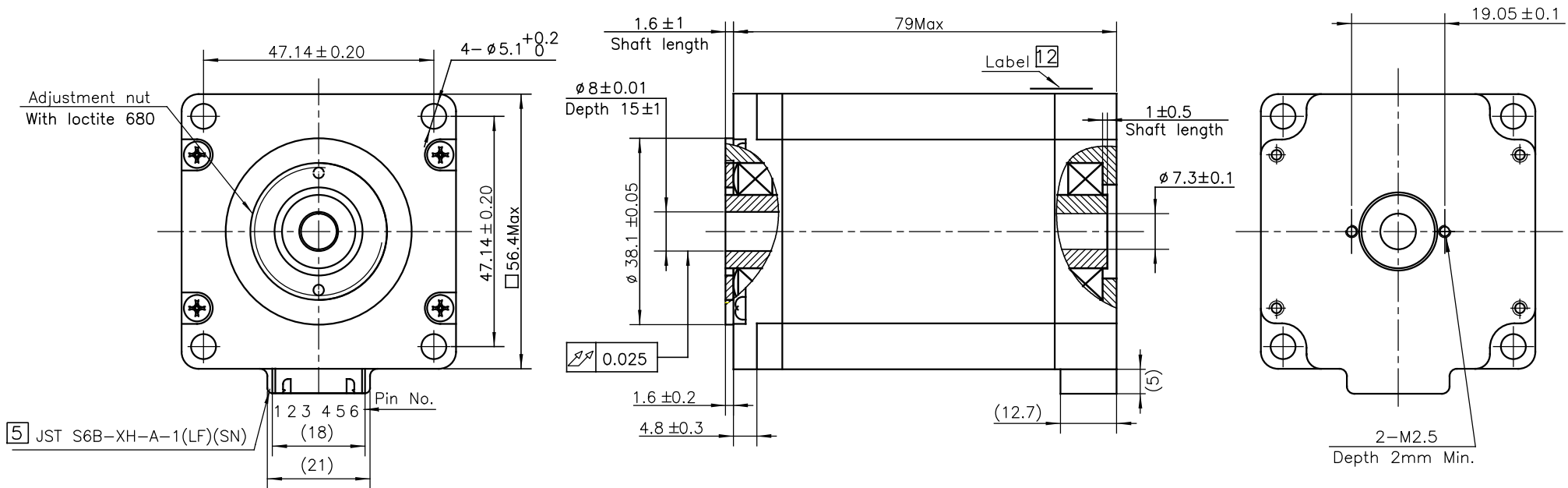
PHASE DETAIL




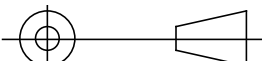
FULL STEP SWITCHING SEQUENCE
BI-POLAR, FACING MOUNTING END

STEP	A+	A-	B+	B-
0	+	-	+	-
1	-	+	+	-
2	-	+	-	+
3	+	-	-	+
4	+	-	+	-

CONTRACT NO. —				
APPROVALS	DATE	STEP MOTOR OUTLINE		
DRAWN K.KESLER	10/31/19			
CHECKED R.JONEZ	10/31/19			
APPROVED J.KORDIK	10/31/19			
APPROVED —	—			
SCALE: NONE		COMPUTER DATA BASE DRAWING	DWG NO. HH23-103	REV C
		SHEET 1 OF 2		



*ALL DIMENSIONS IN MM

TOLERANCES	THIRD ANGLE PROJECTION		 APPLIED MOTION PRODUCTS, INC.		
DECIMALS: MM X.XX = ±0.13 X.X = ±0.25 X = ±0.5			STEP MOTOR OUTLINE		
ANGLES: MACH. = ±0.5° CHAM. = ±5°	APPROVALS	DATE			
COMPUTER DATA BASE DRAWING	DRAWN K.KESLER	10/31/19	B	DWG NO. HH23-103	REV C
	CHECKED R.JONEZ	10/31/19			
	APPROVED —	—	SCALE: NONE		SHEET 2 OF 2

Mouser Electronics

Authorized Distributor

Click to View Pricing, Inventory, Delivery & Lifecycle Information:

[Applied Motion:](#)

[HH23-103](#)