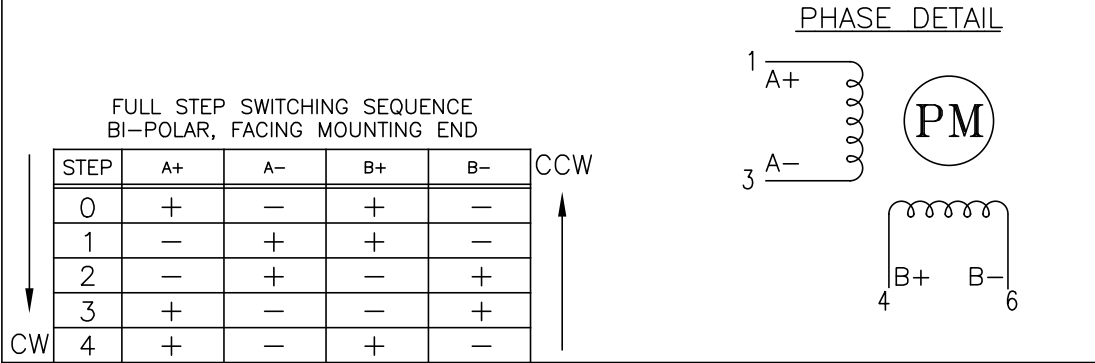


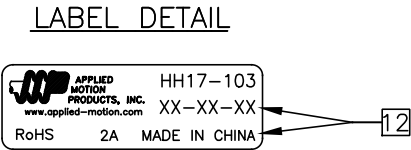
SPECIFICATIONS:	
NUMBER OF PHASES: 2	ROTOR INERTIA: 82 g-cm ² (0.45 oz-in ²) NOM
STEPS PER REVOLUTION: 200	INSULATION CLASS: B
STEP ANGLE: 1.8°	TEMP. RISE: 80 °C MAX.
STEP TO STEP ACCURACY: ±0.09° 1 , 2	OPERATING TEMP. RANGE: -20 TO +50 °C 9
POSITIONAL ACCURACY: ± 5 % 1 , 3	STORAGE TEMP. RANGE: -30 TO +70 °C
AXIAL MOVEMENT: 0.1mm MAX (100N AXIAL FORCE)	RELATIVE HUMIDITY RANGE: 15 TO 85 %
BEARING SIZE: 19*10*5 mm	WEIGHT: 0.36 kg (0.79 lb)
SHAFT MATERIAL: SUS303	

	7	8		1	1
SPECIFICATION	RESISTANCE PER PHASE (ohm ±10%)	INDUCTANCE PER PHASE (mH ±20%)	RATED CURRENT (amp)	HOLDING TORQUE (Nm MIN)	HOLDING TORQUE (oz-in Min)
CONNECTION					
BI-POLAR SERIES	1.3	3	2	0.63	89.2

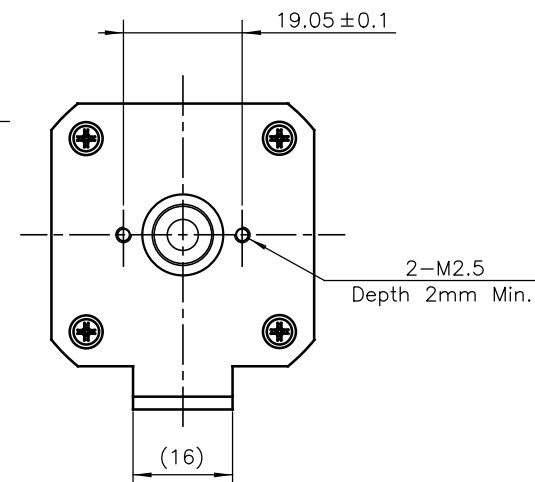
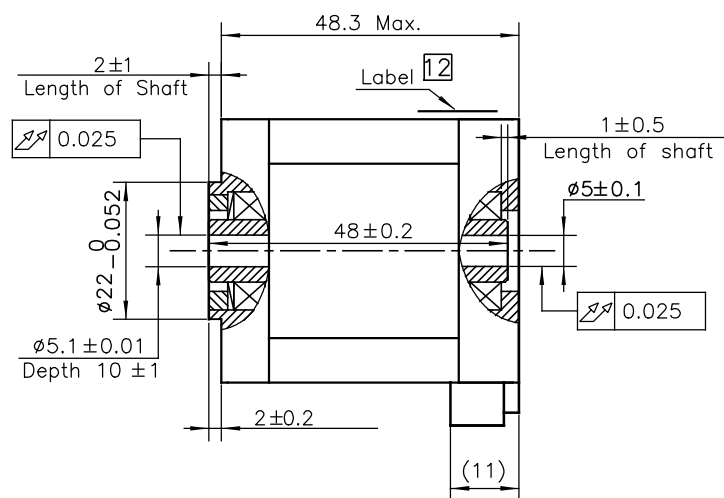
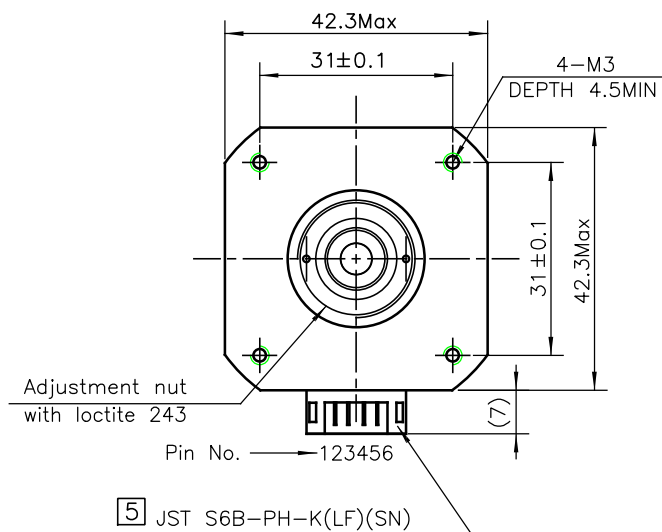
- NOTES, UNLESS OTHERWISE SPECIFIED:
- 1 MEASURMENTS MADE AT RATED CURRENT IN EACH PHASE.
 - 2 BETWEEN ANY TWO ADJACENT FULL STEP POSITIONS.
 - 3 MAXIMUM ERROR IN 360°.
 - 4 HIPOT 500 VAC, 60 Hz FOR ONE MINUTE.
 - 5 CONNECTOR: JSTS6B-PH-K(LF)(SN)
 - 6 INSULATION RESISTANCE: 100 MEGOHMS MIN AT 500 VDC.
 - 7 AS MEASURED ACROSS EACH PHASE.
 - 8 AS MEASURED ACROSS EACH PHASE USING AN A.C. INDUCTANCE BRIDGE AT 1 KHz.
 - 9 AS MEASURED BY THE CHANGE IN RESISTANCE METHOD, WITH RATED CURRENT APPLIED TO 2 PHASES; WITH MOTOR AT REST.
 - 10 ROTOR & STATOR LAMINATED CONSTRUCTION.
 - 11 THIS MOTOR IS MANUFACTURED IN COMPLIANCE WITH THE CURRENT EU RoHS DIRECTIVE.
 - 12 MOTOR LABEL TO INCLUDE "ROHS" COMPLIANT, AMP P/N, 'MADE IN (COUNTRY OF ORIGIN)', AND DATE CODE.
 - 13 HIGH TORQUE MOTOR DESIGN.




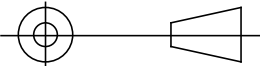
REVISIONS				
ECO NO.	REV	DESCRIPTION	DATE	APPROVED
7068	A	PRELIMINARY RELEASE	10/24/14	D.MACLEOD
7446	B	REVISE NOTE 11	6/6/16	J.KORDIK
8359	C	1ST ANGLE TO 3RD	10/31/19	J.KORDIK
—	—	—	—	—
—	—	—	—	—
—	—	—	—	—
—	—	—	—	—
—	—	—	—	—
—	—	—	—	—
—	—	—	—	—
—	—	—	—	—
—	—	—	—	—



CONTRACT NO. —		<div style="font-size: 0.8em; margin-top: 2px;"> APPLIED MOTION PRODUCTS, INC. </div>		
APPROVALS	DATE			
DRAWN K.KESLER	10/31/19	<div style="font-size: 1.5em; font-weight: bold;">STEP MOTOR OUTLINE</div>		
CHECKED R.JONEZ	10/31/19			
APPROVED J.KORDIK	10/31/19			
APPROVED —	—			
		B	COMPUTER DATA BASE DRAWING	DWG NO. HH17-103 REV C
		SCALE: NONE		SHEET 1 OF 2



*ALL DIMENSIONS IN MM

TOLERANCES		THIRD ANGLE PROJECTION		 APPLIED MOTION PRODUCTS, INC.		
DECIMALS: MM X.XX = ±0.13 X.X = ±0.25 X = ±0.5						
ANGLES: MACH. = ±0.5° CHAM. = ±5°		APPROVALS	DATE	STEP MOTOR OUTLINE		
COMPUTER DATA BASE DRAWING		DRAWN K.KESLER	10/31/19			
		CHECKED R.JONEZ	10/31/19	B	DWG NO. HH17-103	REV C
		APPROVED —	—	SCALE: NONE		SHEET 2 OF 2

Mouser Electronics

Authorized Distributor

Click to View Pricing, Inventory, Delivery & Lifecycle Information:

[Applied Motion:](#)

[HH17-103](#)