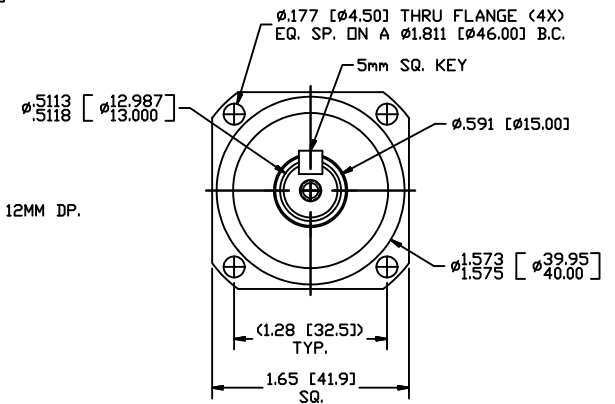
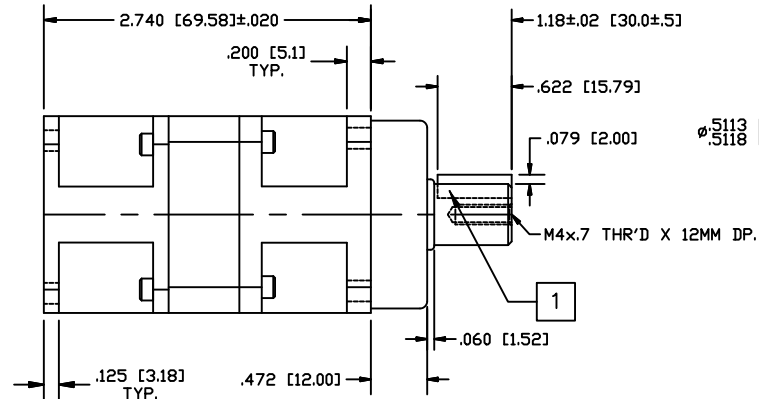
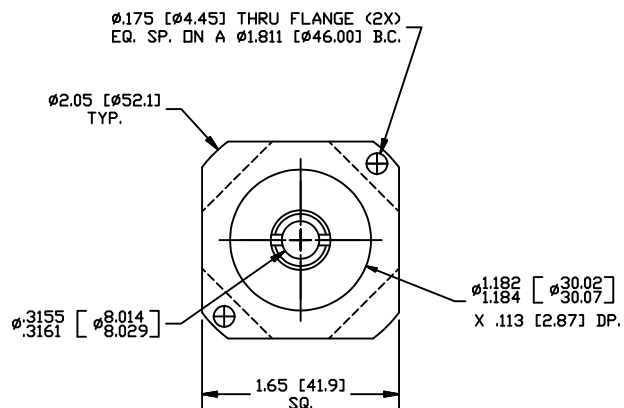

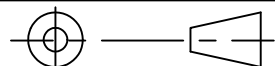


REVISIONS			
REV	DESCRIPTION	DATE	APPROVED
A	INITIAL RELEASE ECO 6709	2/22/13	J Kordik



NOTES: UNLESS OTHERWISE SPECIFIED

- 1 5MM SQUARE KEY
2. 40PM010 RATIO- 10:1
3. FOR TECHNICAL DETAILS, CONTACT APPLIED MOTION PRODUCTS.

TOLERANCES		THIRD ANGLE PROJECTION		 APPLIED MOTION PRODUCTS, INC.				
DECIMALS: [MM] INCH X.XXX= ± .005 X.XX = ±[0.13] .010 X.X = ±[0.25] .020 ANGLES: MACH. = ±.5° CHAM. = ±5°				OUTLINE, GEAR HEAD, PM040, 1 STAGE				
COMPUTER DATA BASE DRAWING		APPROVALS		DATE		B	DWG NO. 40PM010	REV A
		DRAWN <i>R. JONEZ</i>		2/22/13				
		CHECKED						
		APPROVED				SCALE: FULL		
						SHEET 1 OF 1		

Mouser Electronics

Authorized Distributor

Click to View Pricing, Inventory, Delivery & Lifecycle Information:

Applied Motion:

[40PM010](#) [40PM010-LB](#)