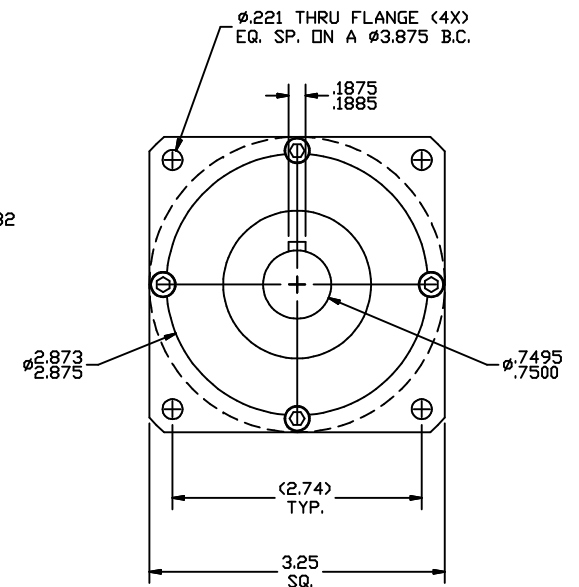
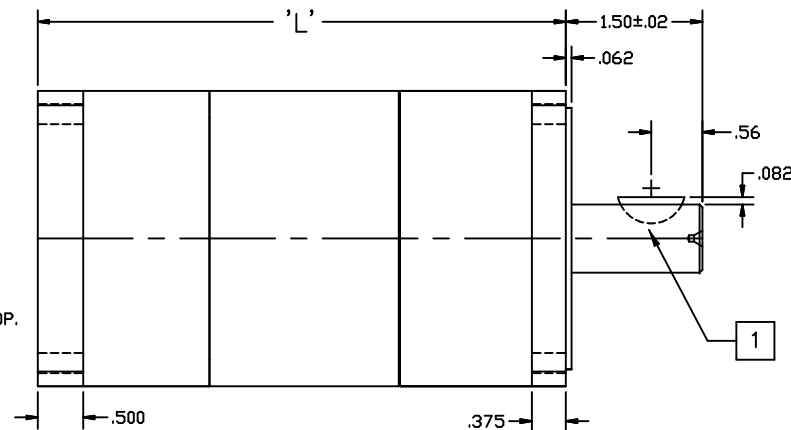
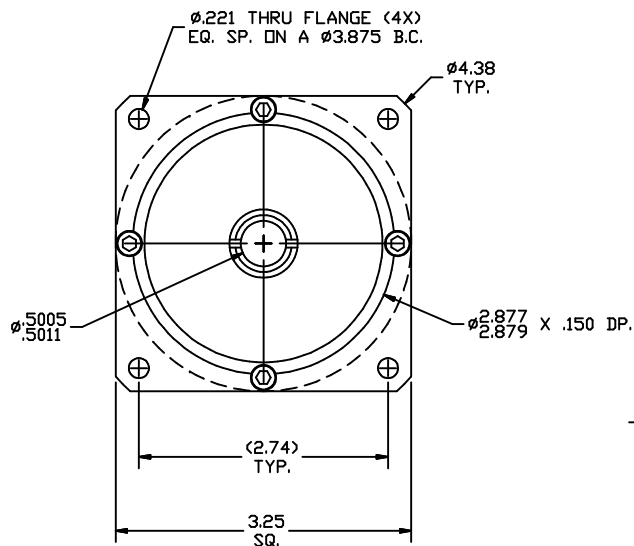


REVISIONS			
REV	DESCRIPTION	DATE	APPROVED
A	INITIAL RELEASE ECO 7249	1/11/16	J KORDIK



GEAR HEAD LENGTH	
PART NUMBER	'L'
34PN-1STAGE	4.56
34PN-2STAGE	5.83



NOTES: UNLESS OTHERWISE SPECIFIED

- 1 #606 WOODRUFF KEY.
2. FOR TECHNICAL DETAILS, CONTACT APPLIED MOTION PRODUCTS.
3. SOME GEAR HEADS REQUIRE A CUSTOM ADAPTER, CHECK WHEN ORDERING.

GEAR RATIOS OFFERED		
GEAR HEAD:	RATIO:	DASH NO.
34PN-1STAGE	5.5:1	-0055
	10:1	-010
34PN-2STAGE	28:1	-028
	70:1	-070
	100:1	-100

TOLERANCES		THIRD ANGLE PROJECTION		 APPLIED MOTION PRODUCTS, INC.		
DECIMALS: INCH (MM) X.XXX = ±.005 (0.013) X.XX = ±.01 (0.25) X.X = ±0.1 (2.5) ANGLES: MACH. = ±.5° CHAM. = ±5°				OUTLINE, GEAR HEAD, PN34, SINGLE AND DOUBLE STAGE		
COMPUTER DATA BASE DRAWING		APPROVALS DRAWN R JONEZ CHECKED	DATE 11/3/15			
		APPROVED		B	DWG NO. 34PN-XXX	REV A
				SCALE: FULL		SHEET 1 OF 1

Mouser Electronics

Authorized Distributor

Click to View Pricing, Inventory, Delivery & Lifecycle Information:

Applied Motion:

[34PN070](#) [34PN070-LB](#) [34PN028](#) [34PN028-LB](#) [34PN100](#) [34PN100-LB](#) [34PN005.5](#) [34PN010](#) [34PN010-LB](#)
[34PN005.5-LB](#)