

2.5 x 2.0mm INDUSTRIAL GRADE CERAMIC RESONATOR



2.5 x 2.0 x 1.0 mm

AWSZT-CW

RoHS/RoHS II compliant
Pb in ceramic, exemption (7c-I)

Moisture Sensitivity Level (MSL) – This product is not Moisture Sensitive - MSL = 1

FEATURES:

- Low resonant impedance
- Built-in load capacitors
- IR reflow capable

APPLICATIONS:

- Remote controls, Microprocessor clocks, Mobile phones, DVD & CD-Roms, Electric appliances
- Consumer electronics

ELECTRICAL CHARACTERISTICS:

| Parameters | Minimum | Typical | Maximum | Units | Notes |
|---|------------------|---------|----------|------------|-----------------------|
| Frequency Range | 20.00 | | 60.00 | MHz | |
| Resonant Impedance (Ro) | | | 60 | Ω | 20.00 MHz – 25.99 MHz |
| | | | 50 | | 26.00 MHz – 35.00 MHz |
| | | | 50 | | 35.01 MHz – 60.00 MHz |
| Load Capacitance for Test Circuit (C1=C2) | 10 – 20% | 10 | 10 + 20% | pF | 20.00 MHz – 25.99 MHz |
| | 5 – 20% | 5 | 5 + 20% | | 26.00 MHz – 35.00 MHz |
| | 5 – 20% | 5 | 5 + 20% | | 35.01 MHz – 60.00 MHz |
| Frequency Tolerance @25 °C | -0.5 | | 0.5 | % | |
| Frequency Stability @ -25°C to +85°C | -0.2 | | 0.2 | % | |
| Withstanding Voltage | | 50 | | V | DC , 1 min |
| Rating Voltage | (1) D.C.Voltage | | 6 | V | |
| | (2) A.C. Voltage | | 15 | Vp-p. | |
| Insulation Resistance | 500 | | | M Ω | 10V, 1min |
| Operation Temperature | -25 | | 85 | °C | |
| Storage Temperature | -55 | | 85 | °C | |
| Aging Rate (Fosc) (10 years) | -0.2 | | 0.2 | % | |

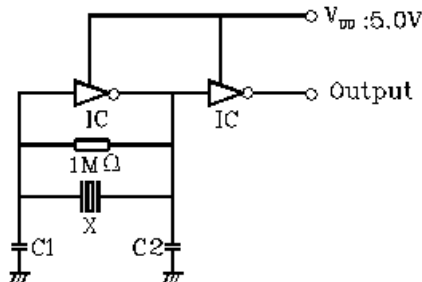
OPTIONS & PART IDENTIFICATION:

AWSZT – XX.XX CW - □

| Frequency | Packaging |
|------------------|--------------------------------|
| Frequency in MHz | T: 3000pcs/Reel Blank: Bulk |

TEST CONDITION AND TEST CIRCUIT:

Parts shall be measured under a condition (Temp.: 20±15°C, Humidity: 65±20% R.H.) unless the standard condition (Temp: 25±3°C, Humidity: 65±10% R.H.) is regulated to measure



X: Ceramic Resonator
C1=C2: 10pF ±20% (20.00MHz~25.99MHz)
5pF ±20% (26.00MHz~35.00MHz)
5pF ±20% (35.01MHz~60.00MHz)

2.5 x 2.0mm INDUSTRIAL GRADE CERAMIC RESONATOR

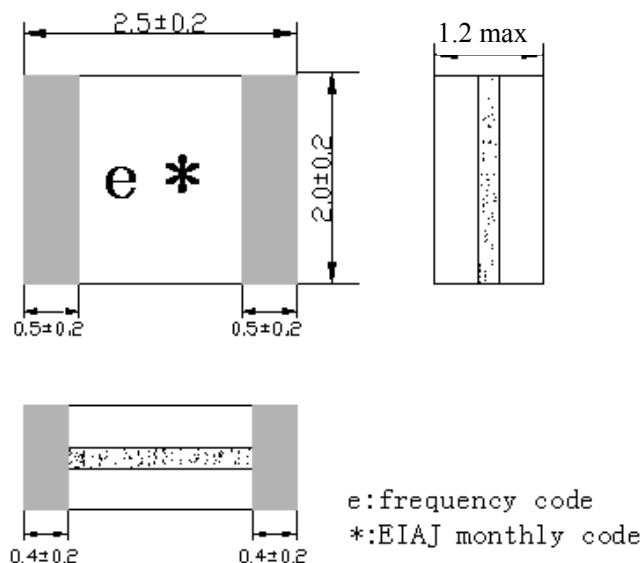


AWSZT-CW

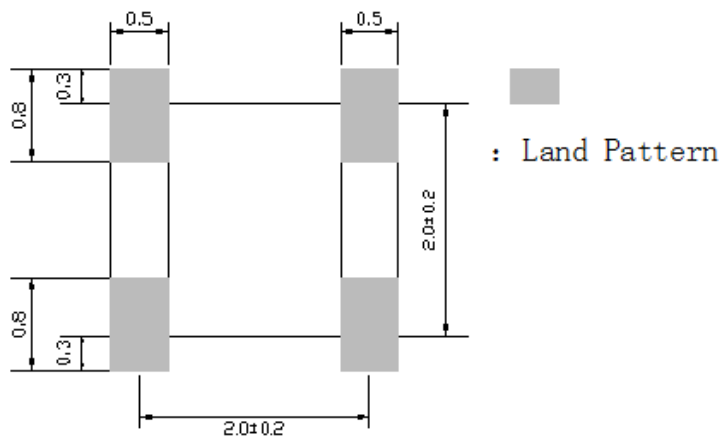
RoHS/RoHS II compliant
Pb in ceramic, exemption (7c-I)

2.5 x 2.0 x 1.0 mm

➤ OUTLINE DRAWING:

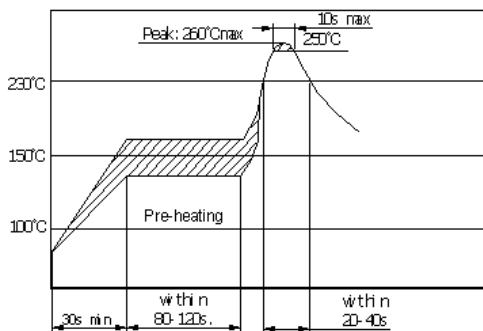


Recommended Land Pattern



Dimension: mm

➤ REFLOW PROFILE:



2.5 x 2.0mm INDUSTRIAL GRADE CERAMIC RESONATOR

AWSZT-CW

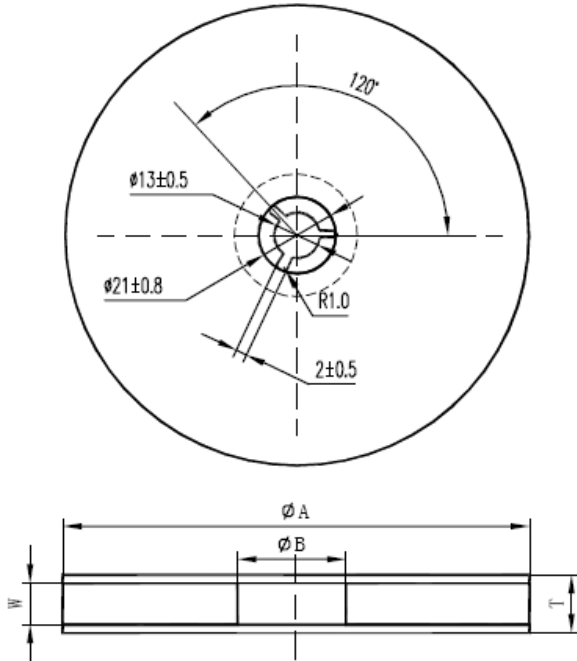
RoHS/RoHS II compliant
Pb in ceramic, exemption (7c-I)



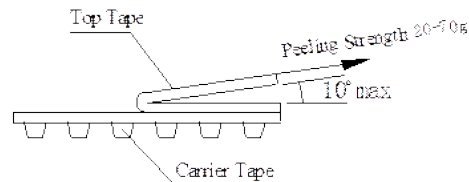
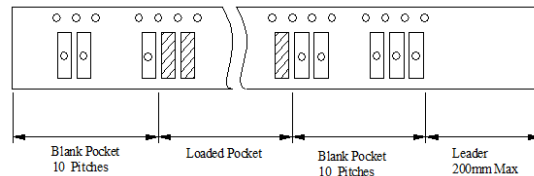
2.5 x 2.0 x 1.0 mm

TAPE & REEL:

T: tape and reel (3,000pcs/reel)



| ΦA | ΦB | W | T | Carrier tape size |
|-------|---------|---------|----------|-------------------|
| 180±3 | 60 min. | 8.4 min | 12.4 max | 8 |



Note: upon opening the original packaging, it is recommended that the product be used within 1 year. If the product will not be used within 1 year, it is recommended that the product be re-sealed in airtight packaging according to MSL 1 requirements to maintain solderability.

Dimension: mm

CAUTION:

- (1) Do not apply excess mechanical stress to the component body or terminations. Do not attempt to re-form or bend the components as this will cause damage to the component.
- (2) This component is not hermetically sealed. Do not clean or wash the component.
- (3) Reflow Soldering: Do not use strong acidity flux, such as flux with chlorine content of greater than 0.2wt% during Reflow Soldering.
- (4) Do not expose the component to open flame.
- (5) This specification applies to the functionality of the component as a single unit.
- (6) Storage Conditions: If the product is to be stored for a period greater than Six Months after the Delivery Date, it is recommended that customers confirm the solderability and characteristics for the product prior to use.
- (7) This product is not recommended for use in the following applications: Automotive, Medical, Military, Safety, or any other high-reliability, life dependant applications. Contact Abracon Corporation prior to using this product when in doubt.

Mouser Electronics

Authorized Distributor

Click to View Pricing, Inventory, Delivery & Lifecycle Information:

[ABRACON:](#)

[AWSZT-30.00CW-T](#) [AWSZT-27.00CW-T](#) [AWSZT-25.00CW-T](#) [AWSZT-32.00CW-T](#) [AWSZT-48.00CW-T](#) [AWSZT-24.00CW-T](#) [AWSZT-33.00CW-T](#) [AWSZT-40.00CW-T](#)