

32.768kHz CERAMIC SMD LVC MOS CRYSTAL OSCILLATOR



ASAK



Moisture Sensitivity Level (MSL) – This product is Hermetically Sealed and not Moisture Sensitive - MSL = N/A: Not Applicable

FEATURES:

- 32.768kHz in 2.0 x 1.6 x 0.7mm package
- Seam sealed package assures high reliability performance
- Low current consumption 240 μ A max.
- Suitable for RoHS compliant reflow

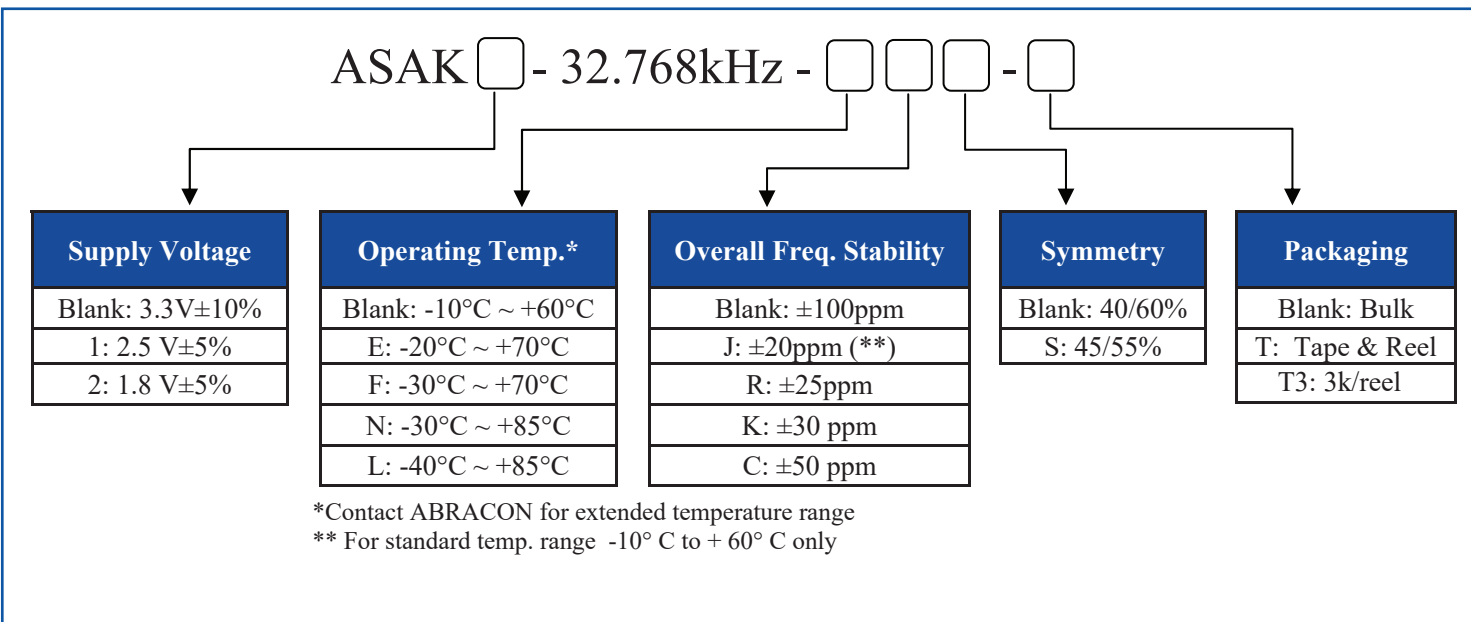
APPLICATIONS:

- Laptop
- Digital camera
- Wireless LAN
- Bluetooth and mobile communication
- LCD
- PDA and MP3 player
- Electricity, gas and water metering

STANDARD SPECIFICATIONS:

Parameters	Minimum	Typical	Maximum	Units	Notes
Frequency Range	32.768			kHz	
Operating Temperature	-10		+60	$^{\circ}$ C	See options
Storage Temperature	-55		+125	$^{\circ}$ C	
Overall Frequency Stability*	-100		+100	ppm	See options
Supply Voltage (Vdd)	2.97	3.3	3.63	V	Standard
	2.375	2.5	2.625		Option 1
	1.71	1.8	1.89		Option 2
Supply Current (I _{dd})		120	240	μ A	
Output Load			15	pF	LVC MOS
Output Voltage	V _{OH}	0.9*Vdd		V	
	V _{OL}		0.1*Vdd		
Tri-state Function	"1" (V _{IH} \geq 0.7*Vdd) : Oscillation "0" (V _{IL} \leq 0.3*Vdd) : Hi Z				
Aging	-3		+3	ppm	@+25 $^{\circ}$ C First year
Symmetry @1/2Vdd	40	50	60	%	Standard
	45	50	55		Option S
Start-up Time			5	ms	
Rise/Fall Time (Tr/Tf)			60	ns	
Disable Current			10	μ A	

OPTIONS AND PART IDENTIFICATION: (Left blank if standard)





ASAK

RoHS/RoHS II Compliant

OUTLINE DIMENSIONS:

#1

(BOTTOM VIEW)

Recommended Land Pattern

Note: Recommend using an approximately 0.01uF bypass capacitor between PIN 2 and 4.

PIN #	Function
1	Enable/Disable
2	GND
3	Output
4	Vdd

Dimensions: mm

REFLOW PROFILE:

Zone	Description	Temperature	Time
1	Preheat	$T_{SMIN} \sim T_{SMAX}$ 170°C ~ 190°C	60 ~ 120 sec.
2	Reflow	T_L 220°C±10°C	30 sec. MAX
3	Peak heat	T_P 260°C	10 sec. MAX



ASAK

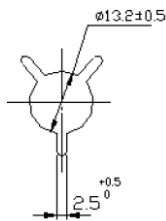
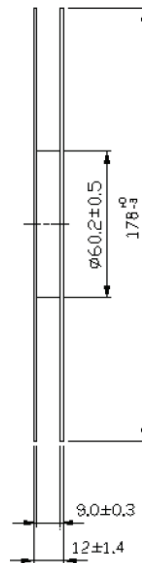
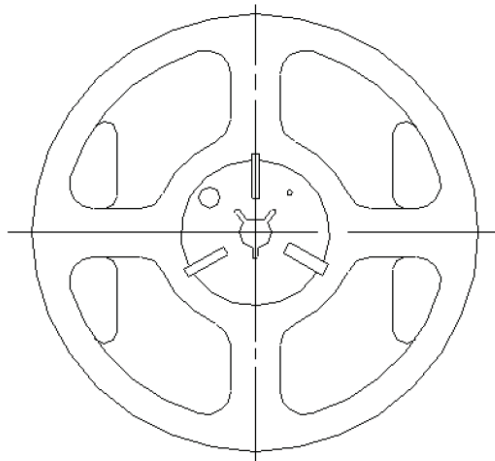
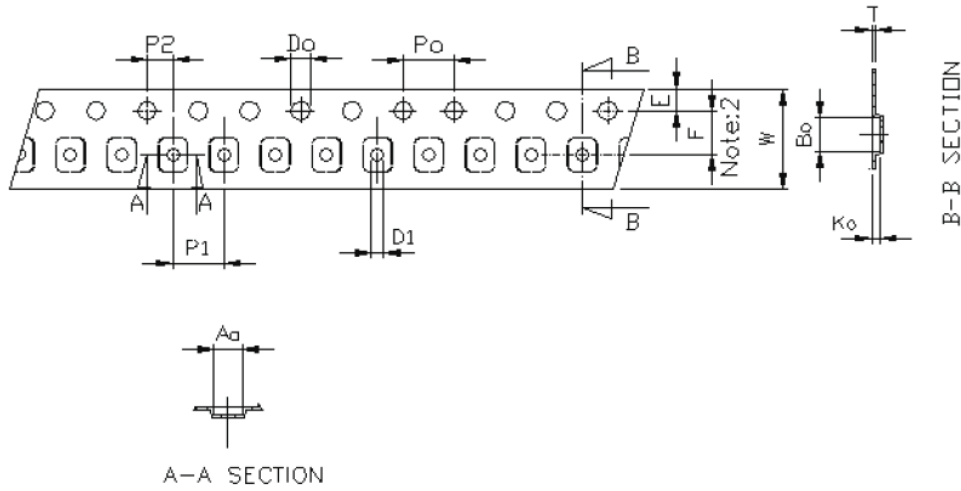
2.0 x 1.6 x 0.7mm

ASAK

RoHS/RoHS II Compliant

TAPE & REEL:

T= Tape and reel (1,000pcs/reel)
T3= Tape and reel (3,000pcs/reel)



Symbol	Dimensions (mm)	Symbol	Dimensions (mm)
A0	1.85±0.10	D0	1.50±0.05
B0	2.25±0.10	D1	1.05±0.05
K0	0.95±0.10	E	1.75±0.10
P0	4.0±0.10	F	3.50±0.05
P1	4.0±0.10	W	8.0±0.20
P2	2.0±0.05	T	0.25±0.05

Dimensions: mm

ATTENTION: Abracon Corporation's products are COTS – Commercial-Off-The-Shelf products; suitable for Commercial, Industrial and, where designated, Automotive Applications. Abracon's products are not specifically designed for Military, Aviation, Aerospace, Life-dependant Medical applications or any application requiring high reliability where component failure could result in loss of life and/or property. For applications requiring high reliability and/or presenting an extreme operating environment, written consent and authorization from Abracon Corporation is required. Please contact Abracon Corporation for more information.

Mouser Electronics

Authorized Distributor

Click to View Pricing, Inventory, Delivery & Lifecycle Information:

ABRACON:

[ASAK1-32.768KHZ-LRS-T](#) [ASAK2-32.768KHZ-LK-T](#) [ASAK2-32.768KHZ-LKS-T](#) [ASAK2-32.768KHZ-LRS-T](#) [ASAK-32.768KHZ-J-T](#) [ASAK1-32.768KHZ-LKS-T](#) [ASAK-32.768KHZ-JS-T](#) [ASAK1-32.768KHZ-LK-T](#) [ASAK2-32.768KHZ-LR-T](#) [ASAK2-32.768KHZ-JS-T](#) [ASAK-32.768KHZ-LRS-T](#) [ASAK1-32.768KHZ-LR-T](#) [ASAK1-32.768KHZ-JS-T](#) [ASAK-32.768KHZ-LR-T](#) [ASAK1-32.768KHZ-J-T](#) [ASAK-32.768KHZ-LKS-T](#) [ASAK-32.768KHZ-LK-T](#) [ASAK2-32.768KHZ-J-T](#)