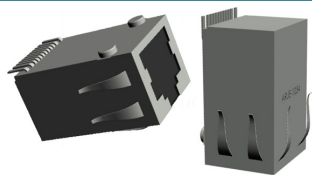


# 1-PORT 10GBASE-T SMD RJ45 WITH INTEGRATED MAGNETICS



ARJE-1034

16.10 x 13.87 x 25.68mm

RoHS/RoHS II Compliant

## FEATURES

- High speed 10GBase-T
- 10/100/1000Base-T compatibility
- Surface mount device
- Wide -40C to 85C operating temperature range
- Integrated magnetics
- Integrated shielding and metal fingers for excellent EMI performance

## APPLICATIONS

- Networking equipment
- Industrial IoT/IoT
- Video IP cameras
- Machine-to-machine (M2M)
- Industrial process control
- Servers and cloud computing
- High performance computing (HPC)
- Network interface cards (NIC)
- Media converters

## STANDARD SPECIFICATIONS

Parameters	Minimum	Typical	Maximum	Units	Notes
Turn Ratio ( $\pm 3\%$ )	1CT:1CT				
Inductance	100			$\mu\text{H}$	100kHz, 0.1Vrms
Insertion Loss			-3.0	dB	100KHz
			-2.0		1-400MHz
Return Loss	-18.0			dB	1-40MHz
	19-10Log(F/40)*				40-500MHz
Crosstalk	-30.0			dB	1-100MHz
	-20.0				100-500MHz
CM-DMRR	-30.0			dB	1-250MHz
	-20.0				250-500MHz
Hipot	1500 Vrms min			Pri to Sec	
Operating Temperature	-40		85	C	See options

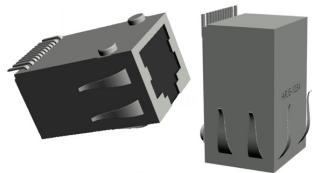
## PART NUMBER IDENTIFICATION

ARJE-1034-

Operating Temperature (See Table 1 for details)

Blank: -40°C ~ +85°C  
A: 0°C ~ +70°C

# 1-PORT 10GBASE-T SMD RJ45 WITH INTEGRATED MAGNETICS

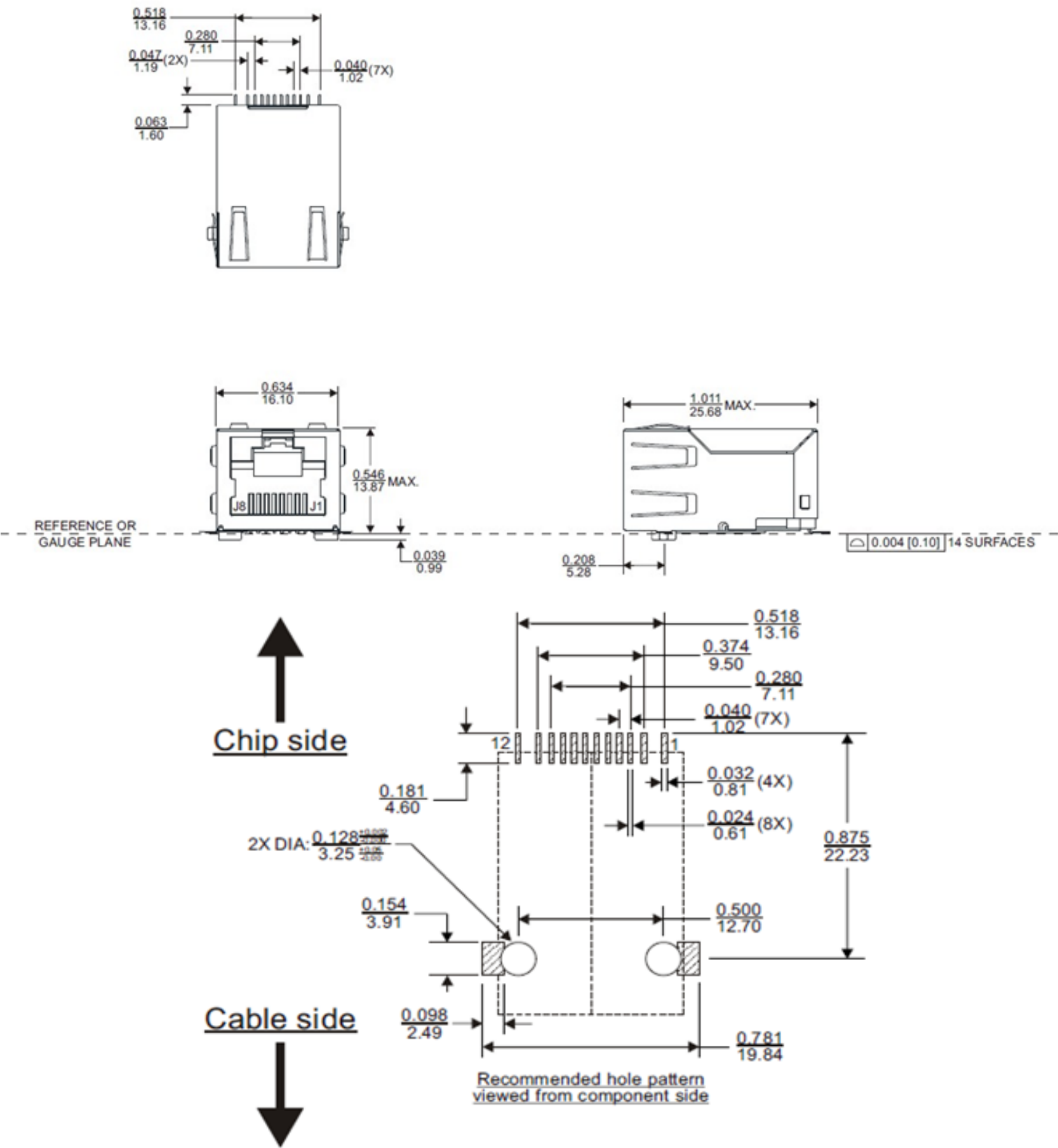


ARJE-1034

16.10 x 13.87 x 25.68mm

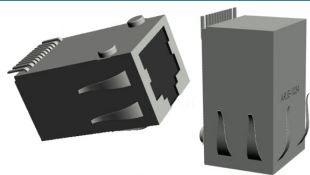
RoHS/RoHS II Compliant

MECHANICAL DIMENSIONS: mm (unless otherwise specific, all tolerances are  $\pm 0.01/0.25$ )



REVISED: 09/26/2016

# 1-PORT 10GBASE-T SMD RJ45 WITH INTEGRATED MAGNETICS

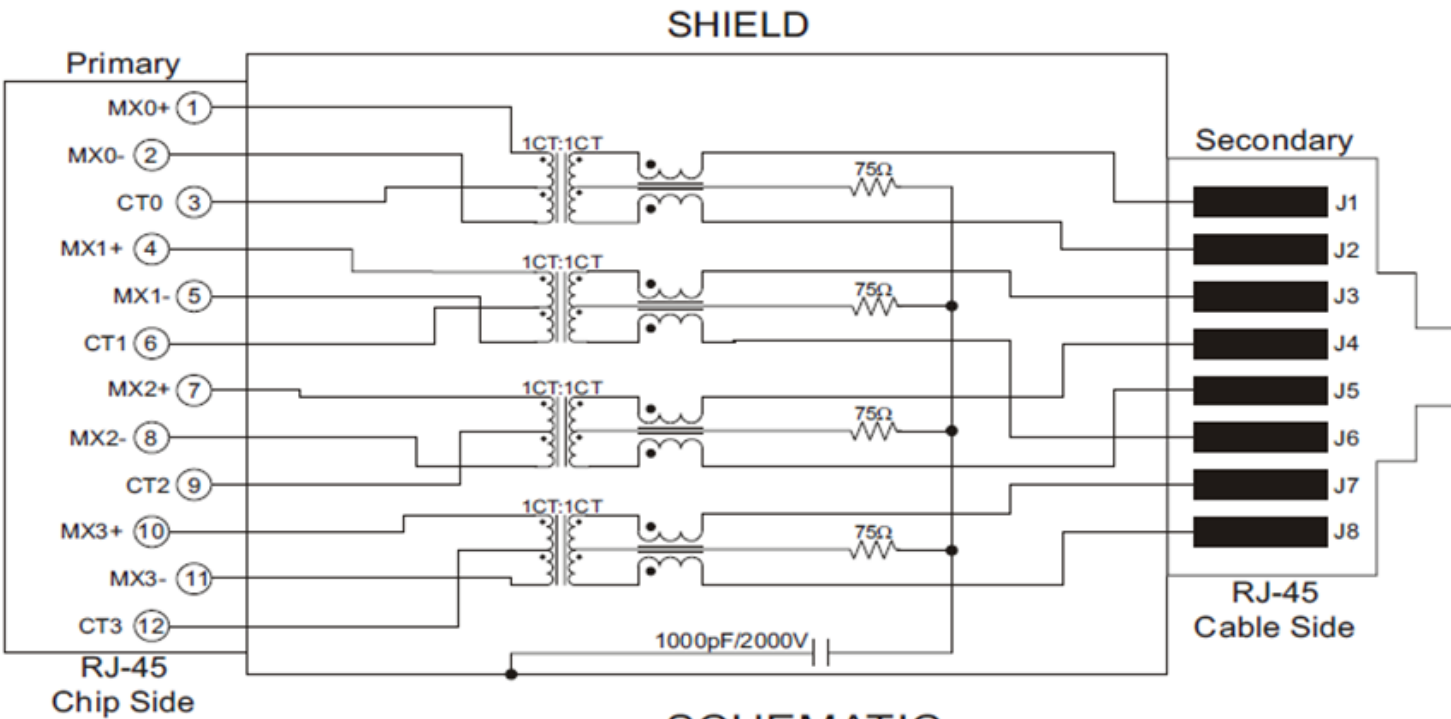


ARJE-1034

16.10 x 13.87 x 25.68mm

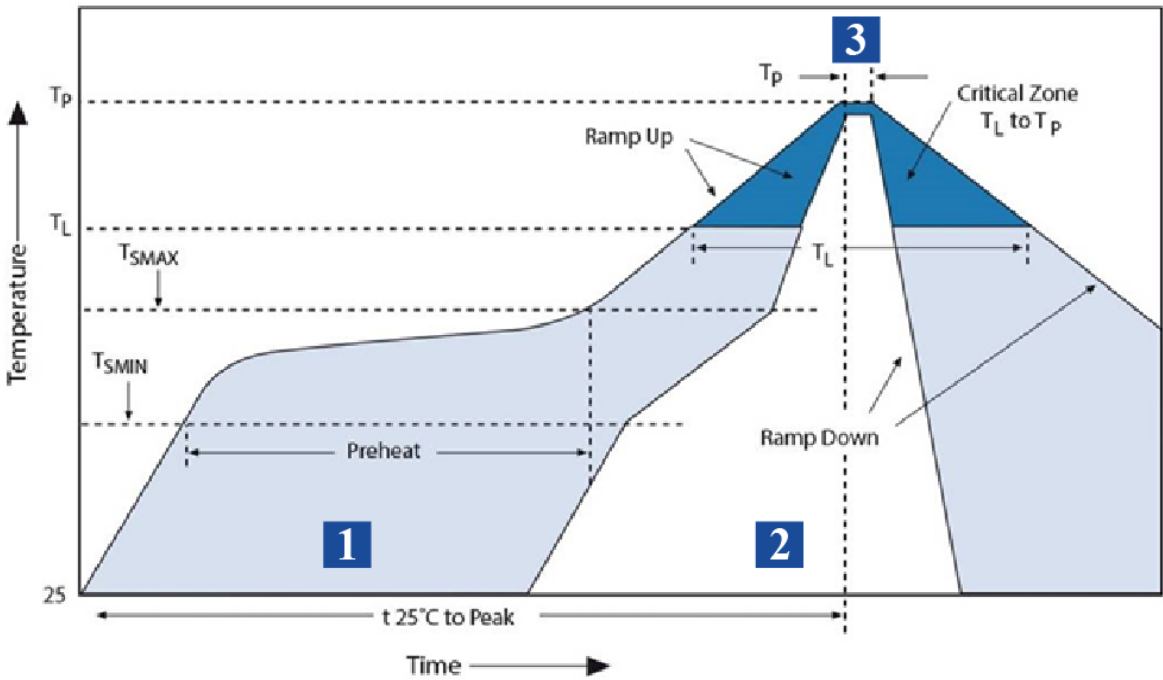
RoHS/RoHS II Compliant

## SCHEMATIC



## SCHEMATIC

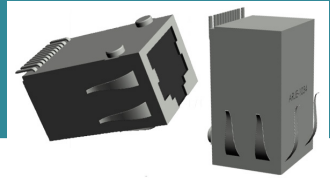
## REFLOW



Zone	Description	Temperature	Time
1	Preheat	$T_{SMIN} \sim T_{SMAX}$ 150°C ~ 200°C	60 ~ 180 sec.
2	Reflow	$T_L$ 217°C	60 ~ 150 sec.
3	Peak heat	$T_p$ 245°C	20 ~ 40 sec.

REVISED: 09/26/2016

# 1-PORT 10GBASE-T SMD RJ45 WITH INTEGRATED MAGNETICS

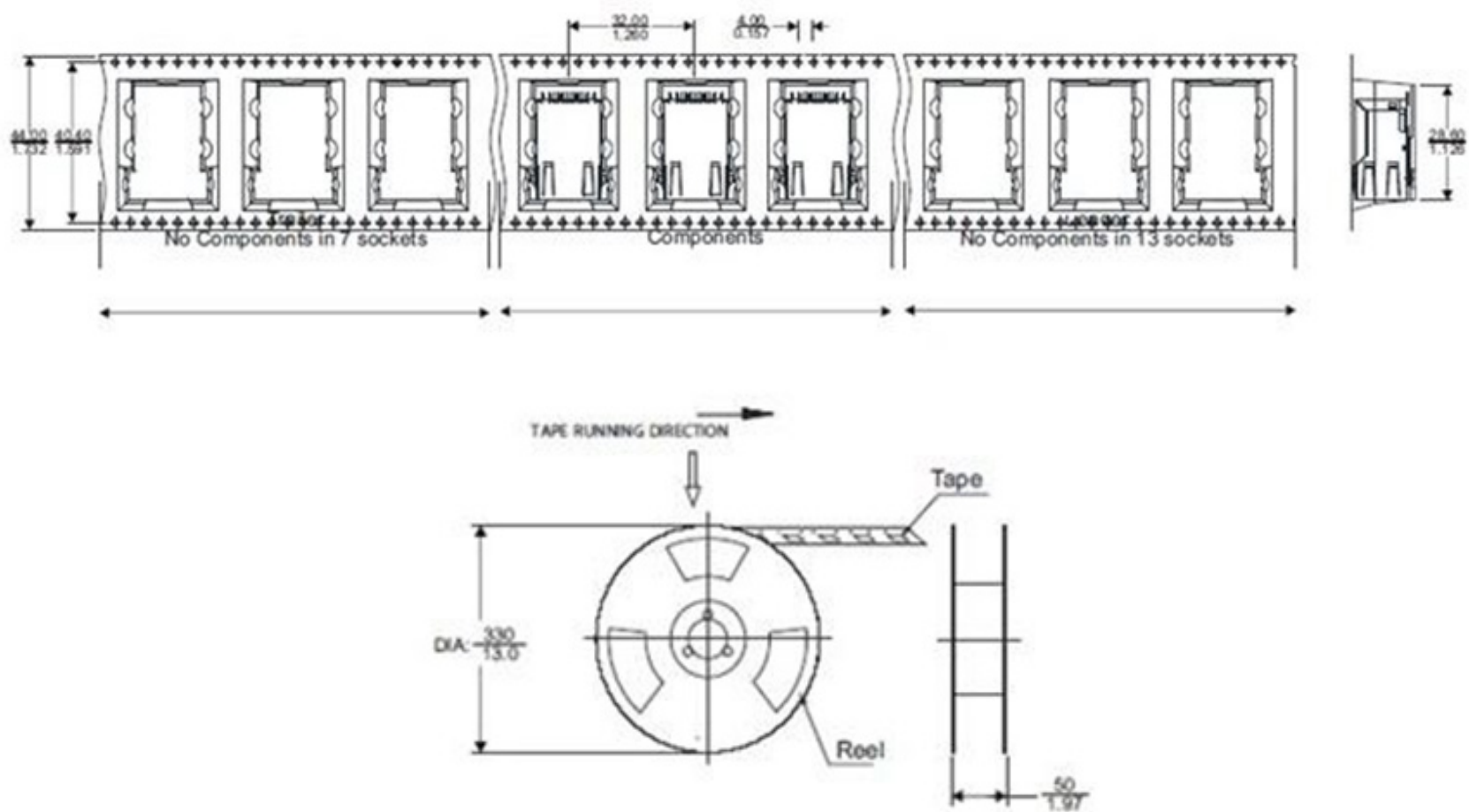


**ARJE-1034**

16.10 x 13.87 x 25.68mm  
RoHS/RoHS II Compliant

## PACKAGING

**T: 110 pcs/reel**



## NOTES

1. The parts are manufactured in accordance with this specification. If other conditions and specifications which are required for this specification, please contact ABRACON for more information.
2. ABRACON will supply the parts in accordance with this specification unless we receive a written request to modify prior to an order placement.
3. In no case shall ABRACON be liable for any product failure from in appropriate handling or operation of the item beyond the scope of this specification.
4. When changing your production process, please notify ABRACON immediately.
5. ABRACON LLC's products are COTS – Commercial-Off-The-Shelf products; suitable for Commercial, Industrial and, where designated, Automotive Applications. ABRACON's products are not specifically designed for Military, Aviation, Aerospace, Life- dependent Medical applications or any application requiring high reliability where component failure could result in loss of life and/or property. For applications requiring high reliability and/or presenting an extreme operating environment, written consent and authorization from ABRACON LLC is required. Please contact ABRACON LLC for more information.
6. All specifications and Marking will be subject to change without notice.

**REVISED: 09/26/2016**

# Mouser Electronics

Authorized Distributor

Click to View Pricing, Inventory, Delivery & Lifecycle Information:

[ABRACON:](#)

[ARJE-1034-A](#) [ARJE-1034](#)