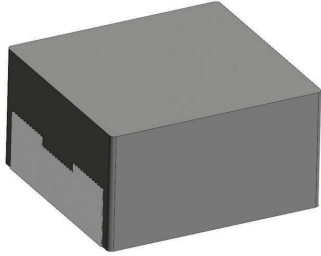


[Request Samples](#)
[Check Inventory](#)


FEATURES

- AEC-Q200 Qualified
- Shielded construction
- Soft saturation
- Low DCR per cubic mm
- Designed for switching frequencies between 100KHz-2MHz



ELECTRICAL SPECIFICATIONS @ 25°C

PART NUMBER*	INDUCTANCE (uH)	TOLERANCE (%)	IRMS (A)	ISAT (A)	DC RESISTANCE (mΩ)		TYPE
					TYP	MAX	
AMDLA2213Q-1R5MT	1.5	20	57	48	1.0	1.15	Lead Frame
AMDLA2213Q-2R0MT	2.0	20	54	45	1.02	1.2	Lead Frame
AMDLA2213Q-2R2MT	2.2	20	52	43	1.05	1.25	Lead Frame
AMDLA2213Q-3R0MT	3.0	20	48	39	1.42	1.64	Lead Frame
AMDLA2213Q-3R3MT	3.3	20	47	37	1.5	1.75	Lead Frame
AMDLA2213Q-4R7MT	4.7	20	44	34	1.9	2.2	Lead Frame
AMDLA2213Q-6R8MT	6.8	20	36	32	2.7	3.1	Lead Frame
AMDLA2213Q-100MT	10	20	30	20	3.8	4.15	Lead Frame
AMDLA2213Q-220MT	22	20	18	14	9.2	11	Lead Frame
AMDLA2213Q-230MT	23	20	18	14	9.2	11	Lead Frame
AMDLA2213Q-330MT	33	20	16	10.5	13.5	15.4	Lead Frame
AMDLA2213Q-470MT	47	20	14	10	17.3	20.8	Lead Frame
AMDLA2213Q-680MT	68	20	12	9.0	26.2	29.5	Lead Frame
AMDLA2213Q-750MT	75	20	11	8.5	27.5	31.6	Lead Frame
AMDLA2213Q-820MT	82	20	10	7.7	31.0	34.2	Lead Frame
AMDLA2213Q-101MT	100	20	9.5	7.5	36.0	40	Lead Frame

* Please refer to Part Identification section

Test Conditions

Inductance: 100 kHz, 1V, 0 Adc

Humidity Range: 85 ± 2% RH

Temperature Rise Current: Current measured at Δ T of 40°C

Saturation Current: Current measured at Δ L of 30%

GENERAL SPECIFICATIONS

Operating Temperature:

-55°C to +155°C with (40°C rise) Irms current.

Maximum Part Temperature: +155°C

Components Storage Temperature: -55°C to +125°C

Tape and Reel Packaging

Temperature: -55°C to +80°C

MSL: Level 1

MATERIALS

Core: Metal Alloy

Wire: Copper

Terminal: Tin Plating

Ink: Black

PART BUILDER



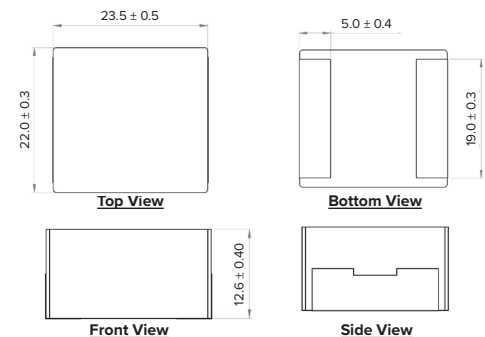
1. Tolerance: M = 20%

2. Packaging: B = Bulk

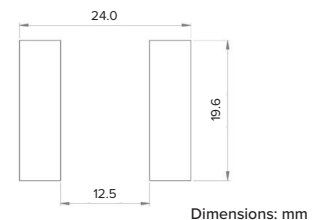
T = Tape and Reel (80pcs/reel)

*Refer to Electrical Specification table

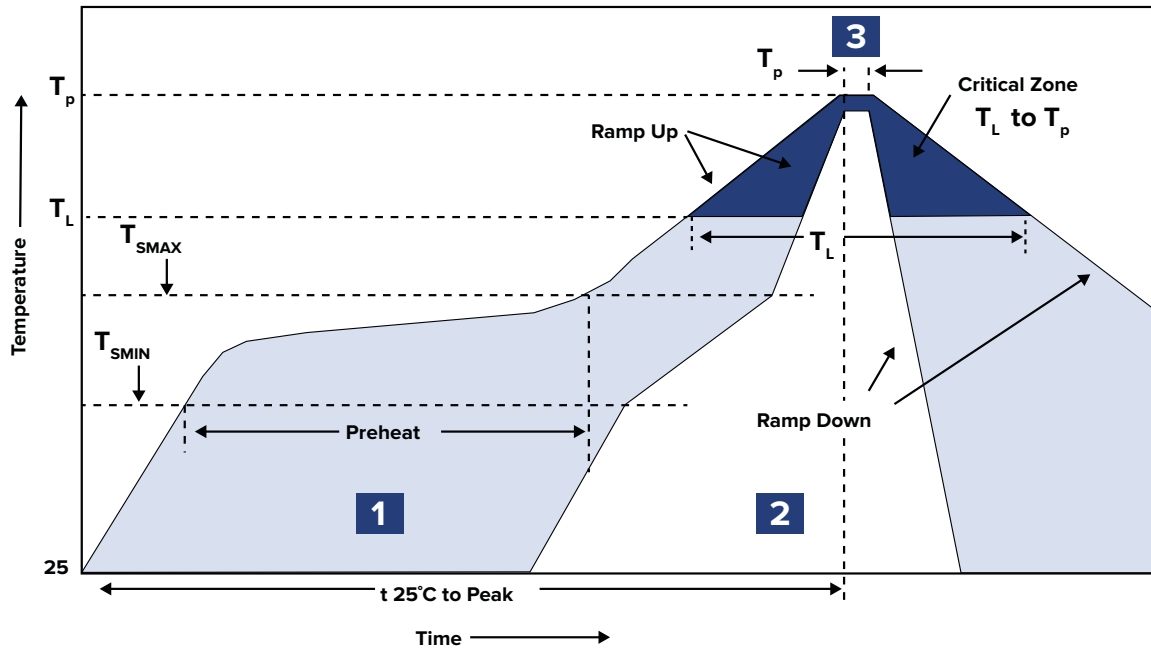
PRODUCT DIMENSIONS



RECOMMENDED LANDING PATTERN



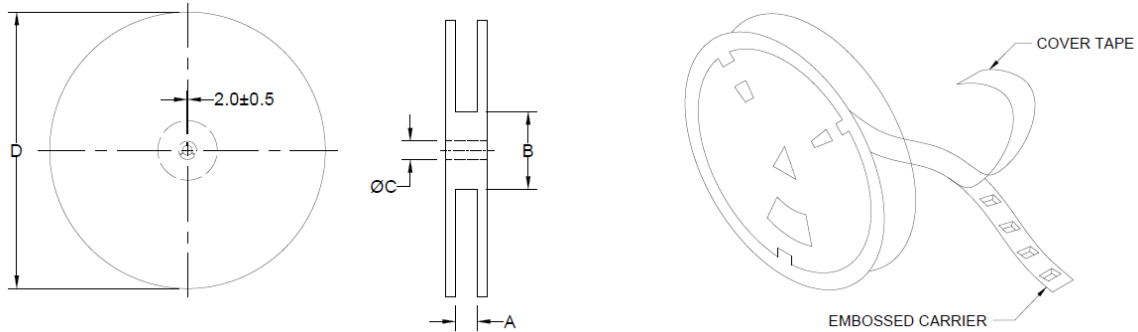
RECOMMENDED REFLOW PROFILE



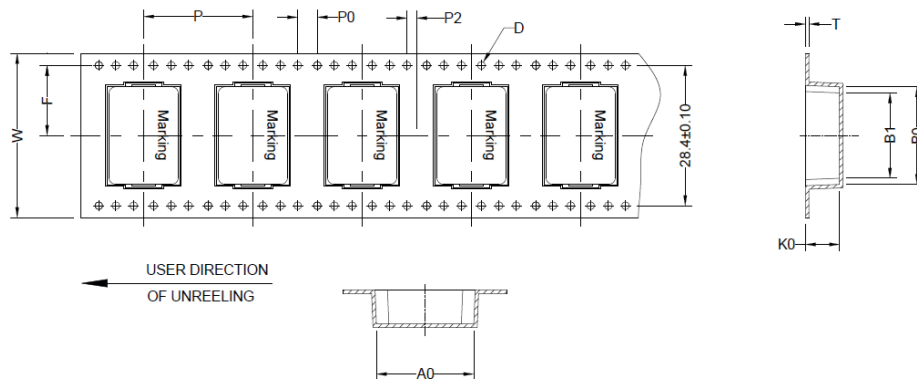
ZONE	DESCRIPTION	TEMPERATURE	TIMES
1	Preheat	$T_{smin} \sim T_{smax}$ 150°C ~ 200°C	60 ~ 180 sec.
2	Reflow	T_L 217°C	60 ~ 150 sec.
3	Peak Heat	T_p 260°C	10 sec. MAX

PACKAGING

Tape and Reel: 80
 Units per Carton: 320
 T&R per Carton: 4
 Weight per Carton: 14.9 kg
 Weight per Unit: 35.5 g
 Carton Dimensions: 410 x 325 x 415 mm



TYPE	A	B	C	D
13" x 44 mm	44.4 +2/-0	100.0 ± 2.0	13.0 +0.5/-0.2	330.0



B ₀	A ₀	K ₀	P	P ₀	P ₂	W	F	T	D
25.0 ± 0.1	23.0 ± 0.1	13.6 ± 0.1	32.0 ± 0.1	4.0 ± 0.05	2.0 ± 0.05	44.0 ± 0.3	20.2 ± 0.1	0.5 ± 0.05	1.5 ± 0.1

Dimensions: mm

This product is commercial off-the-shelf (COTS) and not specifically designed for automotive, military, aviation, aerospace, implantable, life-dependent medical or safety applications. This product is not recommended for use in any application requiring high reliability in which component failure could result in loss of life and/or property damage without prior written approval from Abracon. Specifications are subject to change without notice. Contact Abracon for more information.

Mouser Electronics

Authorized Distributor

Click to View Pricing, Inventory, Delivery & Lifecycle Information:

ABRACON:

[AMDLA2213Q-100MT](#) [AMDLA2213Q-101MT](#) [AMDLA2213Q-750MT](#) [AMDLA2213Q-820MT](#) [AMDLA2213Q-3R0MT](#)
[AMDLA2213Q-3R3MT](#) [AMDLA2213Q-470MT](#) [AMDLA2213Q-4R7MT](#) [AMDLA2213Q-680MT](#) [AMDLA2213Q-6R8MT](#)
[AMDLA2213Q-1R5MT](#) [AMDLA2213Q-220MT](#) [AMDLA2213Q-230MT](#) [AMDLA2213Q-2R0MT](#) [AMDLA2213Q-2R2MT](#)
[AMDLA2213Q-330MT](#)