

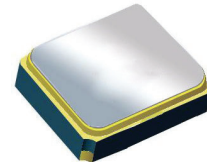
Surface Mount 1900.00MHz SAW Filter

AFS14A40-1900.00-T3

Moisture Sensitivity Level (MSL) = 3



RoHS
Compliant



1.4 x 1.1 x 0.7 mm

APPLICATIONS:

- Wireless Communication
- Remote Control
- Cellular Phones

ELECTRICAL SPECIFICATIONS:

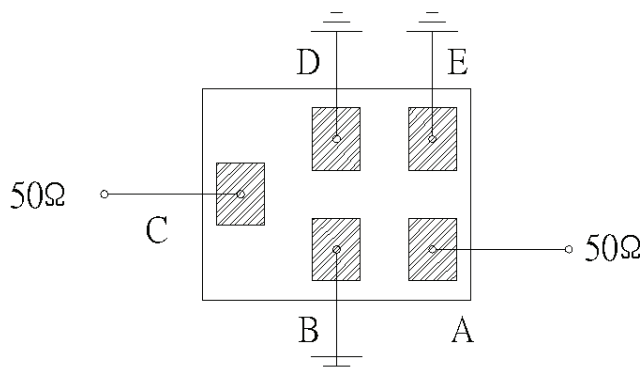
Maximum Ratings

Item	Value
Input Power Level	+13 dBm max.
DC Permissive Voltage	3.0V DC max.
Operating Temperature Range	-30°C to + 85°C
Storage Temperature Range	-40°C to + 85°C

Parameters	Minimum	Typical	Maximum	Units	Notes
Center Frequency (f_c)		1900.00		MHz	
Insertion Loss (IL)		2.0	2.7	dB	1880 ~ 1920MHz
Effective Bandwidth		40		MHz	
Amplitude Ripple		0.5	1.2	dB	1880 ~ 1920MHz
Worst-Case Input / Output Return Loss	9.5	11.7		dB	
Stop-band Attenuation (Referenced to 0.0 dB)	40	45		dB	D.C~1395 MHz
	40	48			1395~1435 MHz
	33	36			1435~1805 MHz
	25	33			1805~1840 MHz
	25	27			2000~2135 MHz
	31	34			2135~2175 MHz
	30	36			2175~3500 MHz
	22	29			3500~6000 MHz
Source Impedance (Z_S)		50		Ω	See note # 1
Load Impedance (Z_L)		50		Ω	See note # 1

Note #1: No matching network required for operation into 50 Ω 's

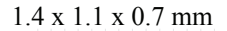
TEST CIRCUIT:



Bottom View



AFS14A40-1900.00-T3



Visit www.abracon.com for Terms & Conditions of Sale **Revised: 04.16.13**
30332 Esperanza, Rancho Santa Margarita, California 92688
tel 949-546-8000 | fax 949-546-8001 | www.abracon.com

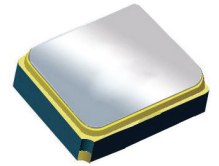
Revised: 04.16.13

Surface Mount 1900.00MHz SAW Filter

AFS14A40-1900.00-T3



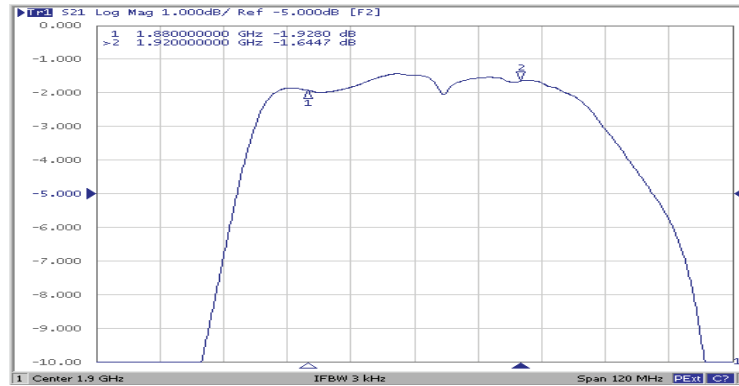
RoHS
Compliant



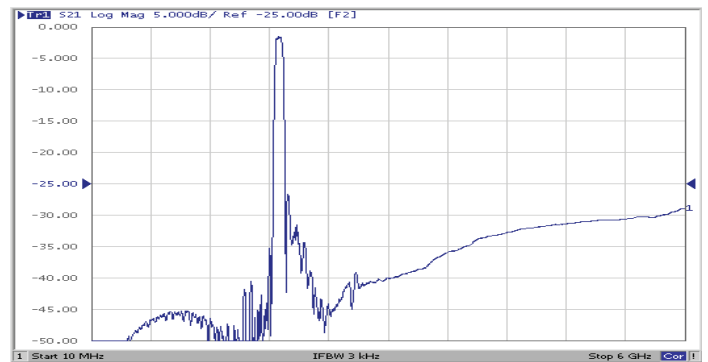
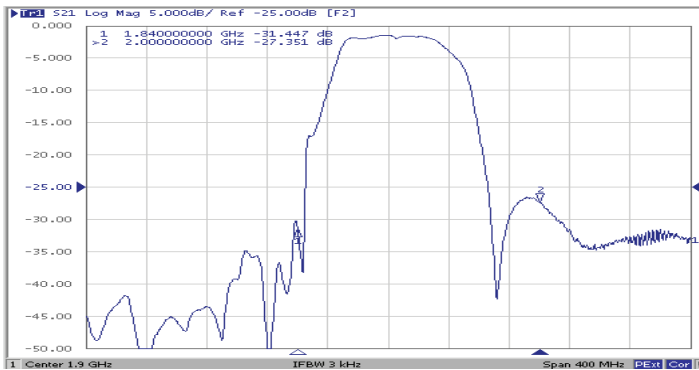
1.4 x 1.1 x 0.7 mm

FREQUENCY CHARACTERISTICS:

Filter Frequency Response (Narrowband)

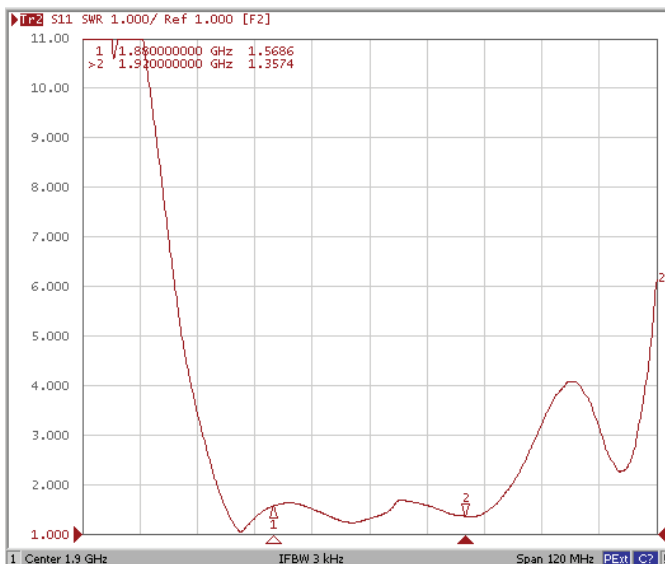


Filter Frequency Response (Wideband)

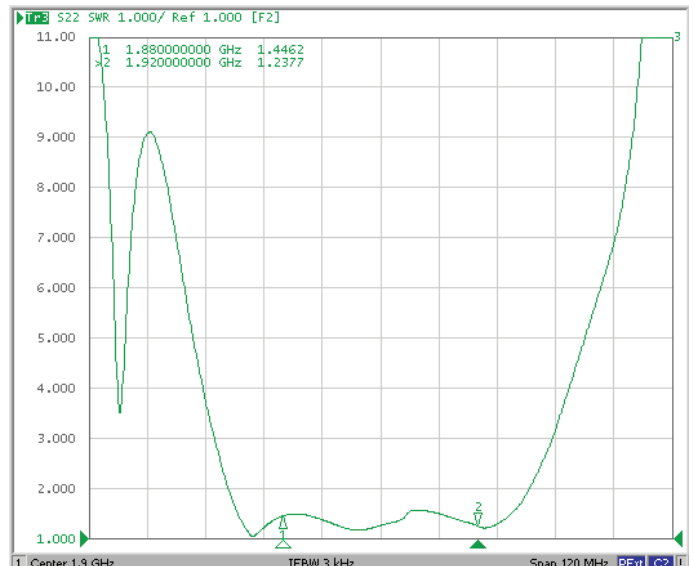


REFLECTION FUNCTIONS:

S11



S22

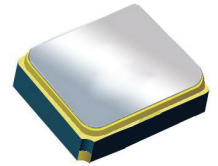


Surface Mount 1900.00MHz SAW Filter

AFS14A40-1900.00-T3

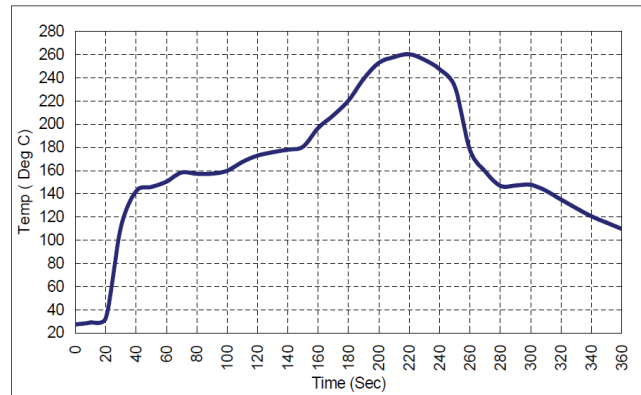


RoHS
Compliant



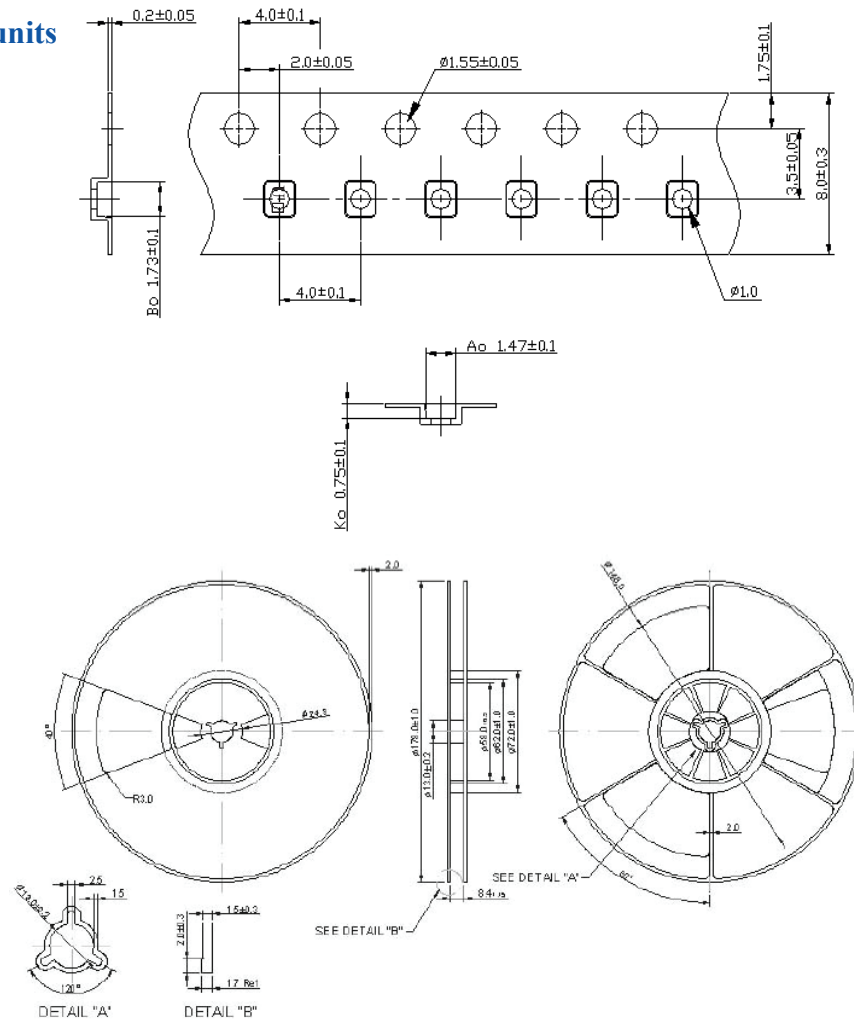
1.4 x 1.1 x 0.7 mm

REFLOW PROFILE:



PACKAGING: 3000 Units/Reel “-T2” parts (2k/reel) are no longer available effective 01/01/2013

Reel Count : 7" = 3k units



Dimensions: mm

ATTENTION: Abracon Corporation's products are COTS – Commercial-Off-The-Shelf products; suitable for Commercial, Industrial and, where designated, Automotive Applications. Abracon's products are not specifically designed for Military, Aviation, Aerospace, Life-dependant Medical applications or any application requiring high reliability where component failure could result in loss of life and/or property. For applications requiring high reliability and/or presenting an extreme operating environment, written consent and authorization from Abracon Corporation is required. Please contact Abracon Corporation for more information.

ABRACON IS
ISO 9001:2008
CERTIFIED



Visit www.abracon.com for Terms & Conditions of Sale
30332 Esperanza, Rancho Santa Margarita, California 92688
tel 949-546-8000 | fax 949-546-8001 | www.abracon.com

Revised: 04.16.13

Mouser Electronics

Authorized Distributor

Click to View Pricing, Inventory, Delivery & Lifecycle Information:

[ABRACON:](#)

[AFS14A40-1900.00-T3](#)