

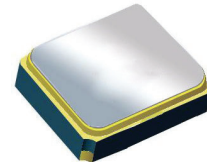
# Surface Mount 915.00MHz SAW Filter

AFS14A26-915.00-T3

Moisture Sensitivity Level (MSL) = 3



RoHS  
Compliant



1.4 x 1.1 x 0.7 mm

## FEATURES:

- 1.4 x 1.1 x 0.7 mm low profile SMT package
- Low Insertion loss
- Excellent selectivity with high out-of-band rejection

## APPLICATIONS:

- Wireless Communication
- Remote Control
- Cellular Phones

## ELECTRICAL SPECIFICATIONS:

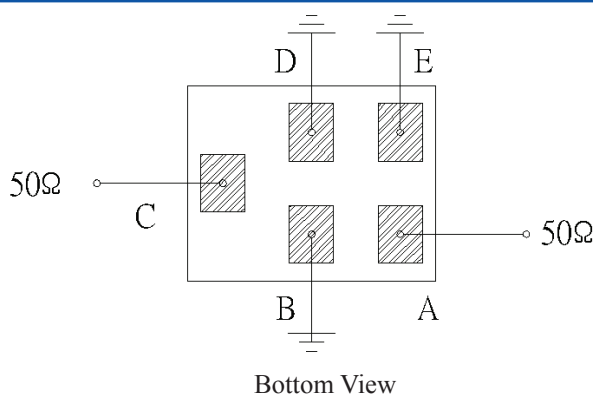
### Maximum Ratings

Item	Value
Input Power Level	+10 dBm max.
DC Permissive Voltage	3.0V DC max.
Operating Temperature Range	-30°C to + 85°C
Storage Temperature Range	-40°C to + 85°C

Parameters	Minimum	Typical	Maximum	Units	Notes
Center Frequency ( $f_c$ )		915.00		MHz	
Insertion Loss (IL)		2.5	3.1	dB	902 ~ 928MHz
Effective Bandwidth		26		MHz	
Amplitude Ripple		0.4	1.5	dB	902 ~ 928MHz
Group Delay Variation		15	50	ns	902 ~ 928MHz
Worst-Case Input / Output Return Loss	9.0	10.0		dB	902 ~ 928MHz
Stop-band Attenuation (Referenced to 0.0 dB)	50	53		dB	0.1~702 MHz
	49	53			738~764 MHz
	42	48			820~846 MHz
	42	50			990~1010 MHz
	49	53			1072~1092 MHz
	40	42			1128~1804 MHz
	40	42			1804~1856 MHz
	30	36			1856~3000 MHz
Source Impedance ( $Z_s$ )		50		$\Omega$	See note # 1
Load Impedance ( $Z_L$ )		50		$\Omega$	See note # 1

**Note #1:** No matching network required for operation into 50 $\Omega$ 's

## TEST CIRCUIT:

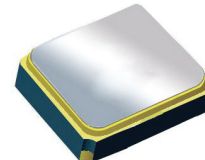


# Surface Mount 915.00MHz SAW Filter

AFS14A26-915.00-T3

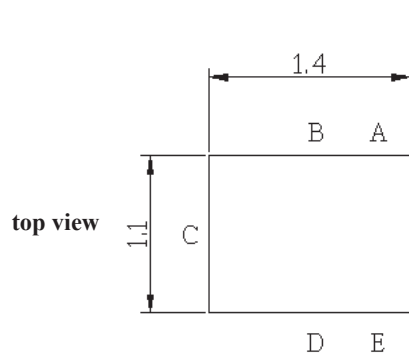


RoHS  
Compliant

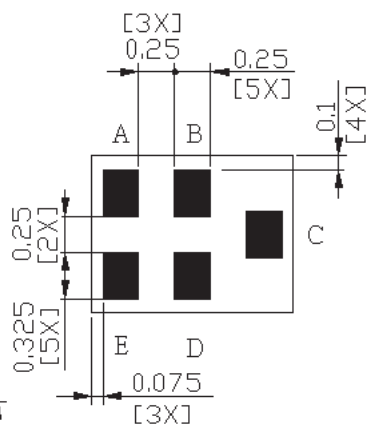
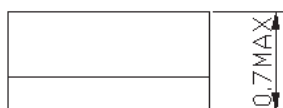


1.4 x 1.1 x 0.7 mm

## OUTLINE DIMENSIONS:

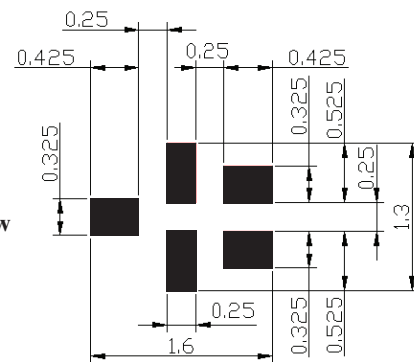


side view



C:	Input
A:	Output
B, D, E:	Ground

## Recommended Land Pattern:



■ : Land Pattern  
Unit : mm

\*All Dimensions are in mm

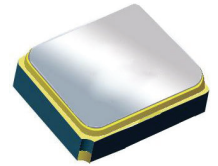


# Surface Mount 915.00MHz SAW Filter

AFS14A26-915.00-T3



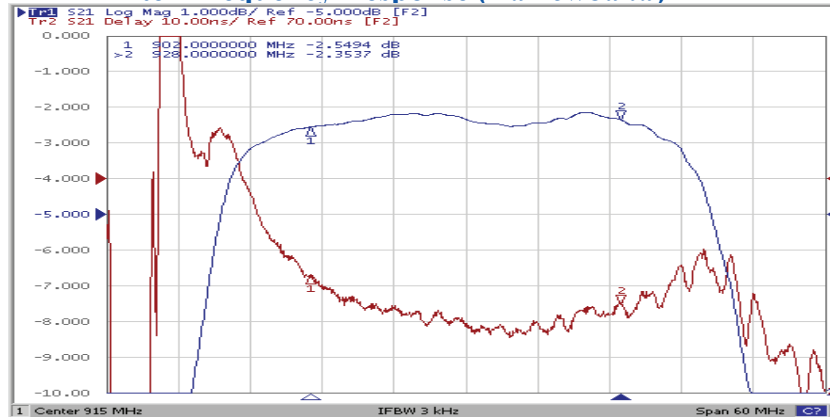
RoHS  
Compliant



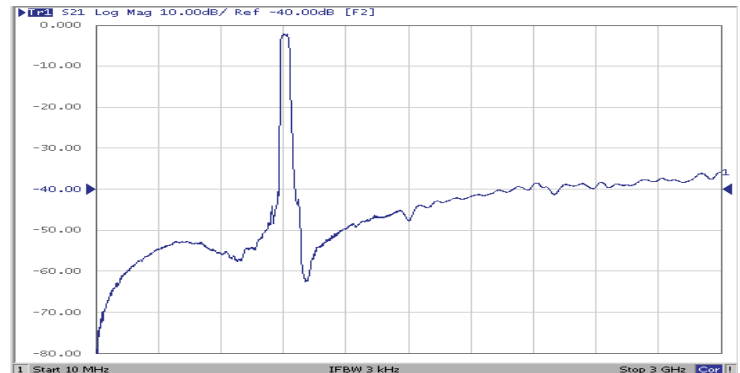
1.4 x 1.1 x 0.7 mm

## FREQUENCY CHARACTERISTICS:

Filter Frequency Response (Narrowband)

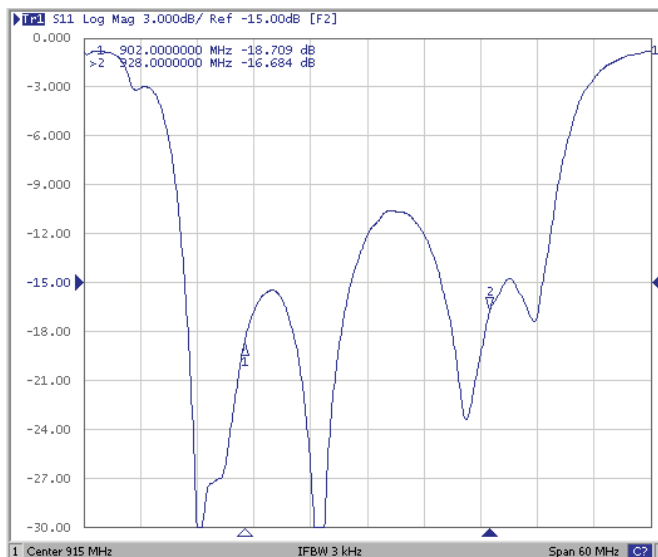


Filter Frequency Response (Wideband)

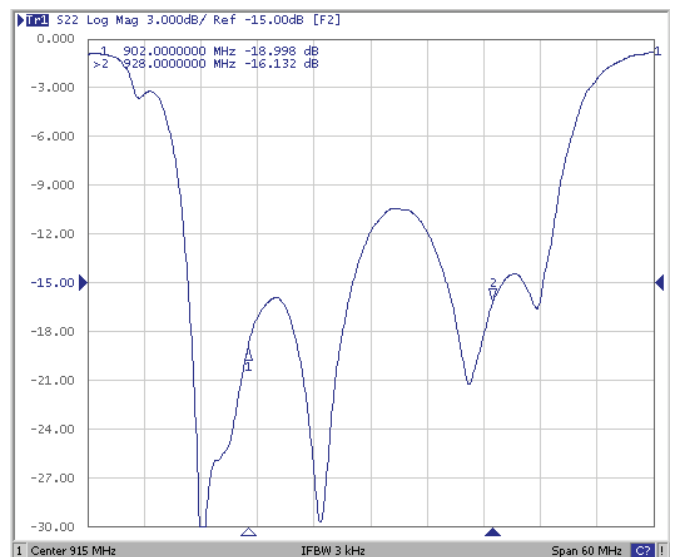


## REFLECTION FUNCTIONS:

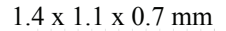
S11



S22



AFS14A26-915.00-T3



Time (Sec)	Temp (Deg C)
0	20
20	20
40	145
60	150
80	150
100	155
120	165
140	175
160	195
180	220
200	250
220	260
240	250
260	175
280	145
300	145
320	135
340	120
360	105

[illegible]

ABRACON IS  
ISO 9001:2008  
CERTIFIED



# ABRACON CORPORATION

30332 Esperanza, Rancho Santa Margarita, California 92688  
tel 949-546-8000 | fax 949-546-8001 | [www.abracon.com](http://www.abracon.com)

Revised: 04.16.13

# Mouser Electronics

Authorized Distributor

Click to View Pricing, Inventory, Delivery & Lifecycle Information:

[ABRACON:](#)

[AFS14A26-915.00-T3](#)