

# Ultra Miniature Ceramic SMD Crystal

**ABM10-165-38.400MHz-T3**



RoHS/RoHS II Compliant



2.5 x 2.0 x 0.5 mm

Moisture Sensitivity Level (MSL) – This product is Hermetically Sealed and not Moisture Sensitive - MSL = N/A: Not Applicable

## FEATURES:

- Low profile, miniature size: 2.5 x 2.0 x 0.5mm SMD
- RoHS compliant
- Overall frequency stability:  $\pm 20$ ppm over -30 ~ +85°C
- Low aging

## APPLICATIONS:

- Decawave DW1000 (IEEE802.15.4-2011 UWB)
- UWB applications
- Real Time Location Systems
- Wireless Sensor Networks

## STANDARD SPECIFICATIONS:

Parameters	Minimum	Typical	Maximum	Units	Notes
Frequency	38.400			MHz	
Operation Mode	Fundamental				
Operating Temperature	-30		+85	°C	
Storage Temperature	-40		+85	°C	
Overall Frequency Stability	-20		+20	ppm	See Note 1
Initial Calibration + Frequency Stability over the Operating Temperature	-15		+20	ppm	See Note 2
Frequency Shift vs Reflow + Aging	-5		0	ppm	See Note 3
Frequency Perturbations			1	ppm	See Note 4
Long-term Stability	-1		+1	ppm	See Note 5
Equivalent Series Resistance (ESR)			40	$\Omega$	
Load Capacitance (CL)	10			pF	
Drive Level			50	$\mu$ W	
Insulation Resistance	500			M $\Omega$	@100V $\pm$ 15V, 25°C

Note:

1. Including initial calibration, reflow, frequency verses temperature and 5-years aging at 25°C.
2. Referenced to nominal frequency at specified load capacitance over the operating temperature range.
3. Two consecutive reflow as per the profile in Section 6.1 after 24 hours recovery at 25°C. Frequency drift over 5 years at 25°C.
4. Peak-to-peak deviation from the frequency vs. temperature curve fit 5<sup>th</sup> order. Minimum of 1 frequency reading every 3°C over operating temperature range.
5. Frequency drift over 1 year at 25°C.

## OPTIONS & PART IDENTIFICATION: (Left blank if standard)

ABM10-165-38.400MHz -



Packing
Blank: Bulk
T3: Tape & Reel (3k/reel)

# Ultra Miniature Ceramic SMD Crystal

ABM10-165-38.400MHz-T3

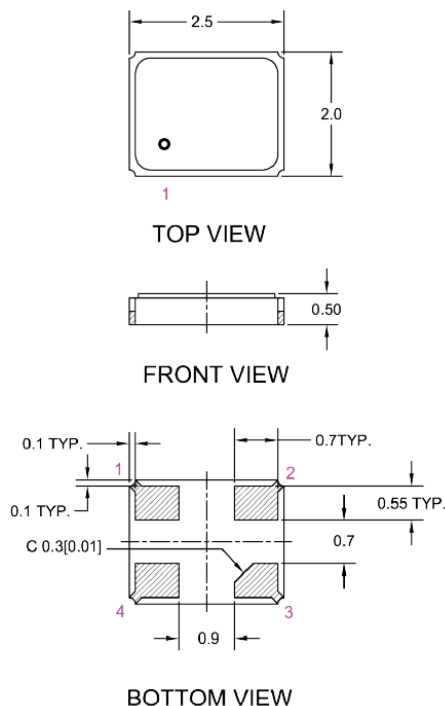


RoHS/RoHS II Compliant

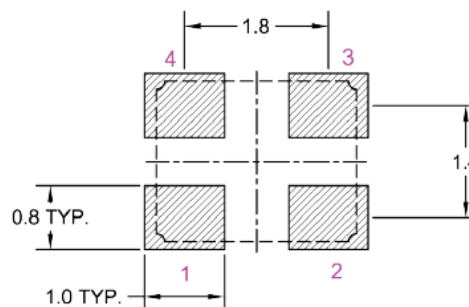


2.5 x 2.0 x 0.5 mm

## OUTLINE DRAWING:



## Recommended Land Pattern

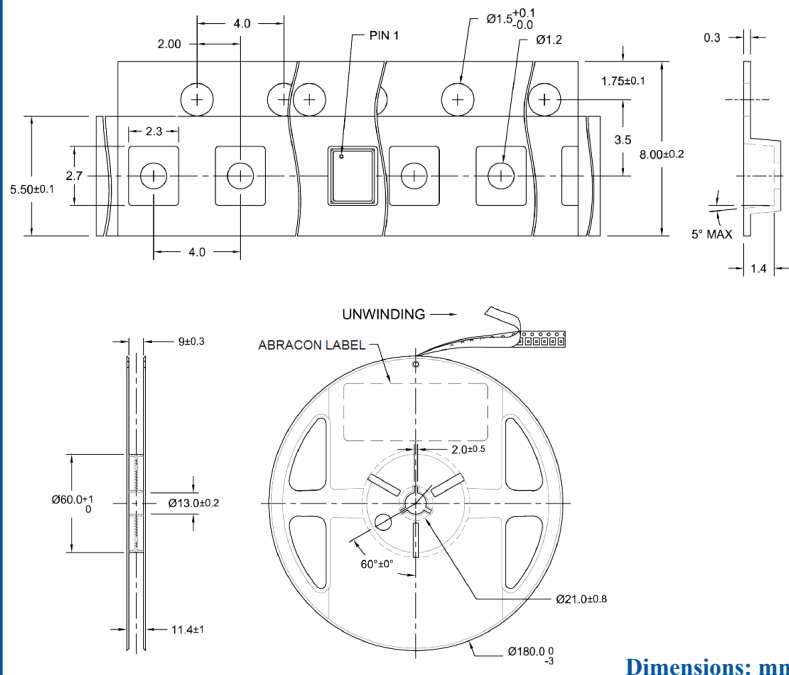


Pin	Function
1	Crystal
2	GND
3	Crystal
4	GND

Dimensions: mm

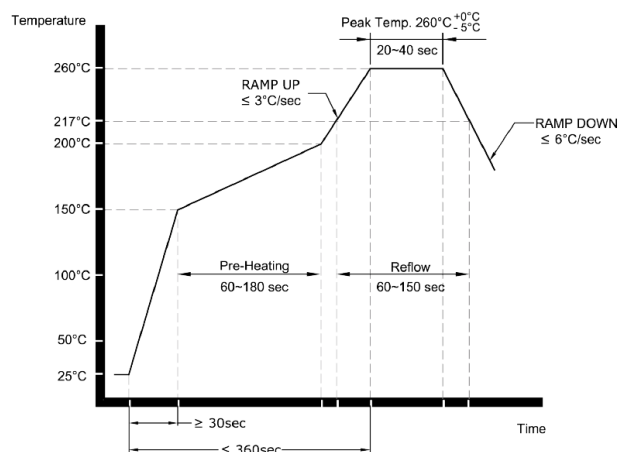
## TAPE & REEL:

Packaging: 3000pcs/reel



Dimensions: mm

## REFLOW PROFILE:



Need a test socket for the ABM10 Series? To view compatible **PRECISION TEST & BURN-IN SOCKETS** for these parts, [click here](#). P/N: AXS-2520-04-10

**ATTENTION:** Abracon Corporation's products are COTS – Commercial-Off-The-Shelf products; suitable for Commercial, Industrial and, where designated, Automotive Applications. Abracon's products are not specifically designed for Military, Aviation, Aerospace, Life-dependant Medical applications or any application requiring high reliability where component failure could result in loss of life and/or property. For applications requiring high reliability and/or presenting an extreme operating environment, written consent and authorization from Abracon Corporation is required. Please contact Abracon Corporation for more information.

ABRACON IS  
ISO9001:2008  
CERTIFIED



2 Faraday, Suite# B | Irvine | CA 92618 Revised: 09.21.15

Ph. 949.546.8000 | Fax. 949.546.8001

Visit [www.abracon.com](http://www.abracon.com) for Terms and Conditions of Sale

# Mouser Electronics

Authorized Distributor

Click to View Pricing, Inventory, Delivery & Lifecycle Information:

[ABRACON:](#)

[ABM10-165-38.400MHZ-T3](#)