

THIS IS A C.A.D. GENERATED DRAWING
DO NOT MAKE MANUAL REVISIONS TO MASTER.

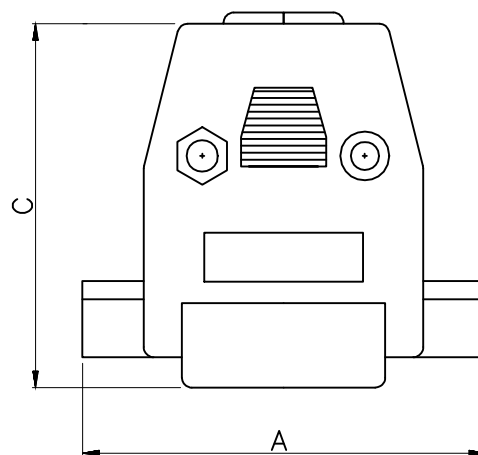
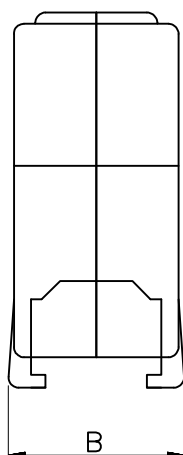
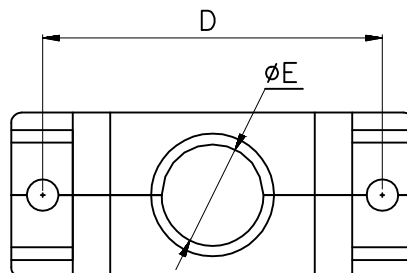


* UNLESS OTHERWISE SPECIFIED TOLERANCES
ON DECIMAL IS: ANGLE $\pm 5^\circ$
UNIT: MM

ISSUE NUMBER	
ORIGINAL	①
9PIN NEW MOLD PART, UPDATE DIM	②

BACKSHELL KIT INCLUDES:

- (2)BACKSHELL HALVES
- (2)HOUSING SCREWS
- (2)MATING SCREWS
- (2)CRIMP SCREWS
- (2)NUT
- (2)CRIMP
- (2)WASHER



DIMENSIONS(mm/in)

SIZE	A ± 0.3 ± 0.012	B ± 0.3 ± 0.012	C ± 0.3 ± 0.012	D ± 0.3 ± 0.012	E ± 0.3 ± 0.012
9	31.2	16.5	39.6	25.00	7.3
	1.228	0.650	1.559	0.984	0.287
15	39.6	17.3	35.8	33.3	10.0
	1.559	0.681	1.410	1.311	0.394
25	54.2	16.8	42.0	47.1	11.0
	2.134	0.661	1.654	1.854	0.433
37	69.0	20.0	51.0	63.5	13.8
	2.717	0.788	2.008	2.500	0.543

BACKSHELL:

FINISHED:

SCREW:

NUT:

CRIMP:

WASHER:

BACKSHELL COLOUR :

ABS UL94HB

CHROMATE PLATED

STEEL, NICKEL PLATED

STEEL, NICKEL PLATED

STEEL, NICKEL PLATED

STEEL, NICKEL PLATED

MP=METALIZED

ORDERING INFORMATION:

SHORT JACKSCREWS

SIZE	P/N - KITTED	PRODUCT CODE
9-WAY	2360-0105-01	MHCCOV 9-SC-MP
15-WAY	2360-0105-02	MHCCOV15-SC-MP
25-WAY	2360-0105-03	MHCCOV25-SC-MP
37-WAY	2360-0105-04	MHCCOV37-SC-MP

THESE DRAWINGS AND SPECIFICATIONS ARE THE
PROPERTY OF MH CONNECTORS LTD. AND SHALL NOT
BE REPRODUCED, COPIED OR USED AS THE BASIS FOR
THE MANUFACTURE OR SALE OF APPARATUS WITHOUT
WRITTEN PERMISSION.

DRAWN JOHNNY		DATE 12-09-20	
APPROVED		DATE	
SCALE	SHEET OF 1 OF 1	REV: 2.0	
DRAWING No MHCCOVXXSC-MP			



THIS SERIES FULLY CONFORMS TO THE
EUROPEAN UNION DIRECTIVES 2002/95/EC
AND 2002/96/EC FOR RoHS COMPLIANCY.



MH CONNECTORS LTD.

Mouser Electronics

Authorized Distributor

Click to View Pricing, Inventory, Delivery & Lifecycle Information:

[NorComp:](#)

[MHCCOV-15SC-MP](#) [MHCCOV-9SC-MP](#) [MHCCOV-37SC-MP](#) [MHCCOV-25SC-MP](#)