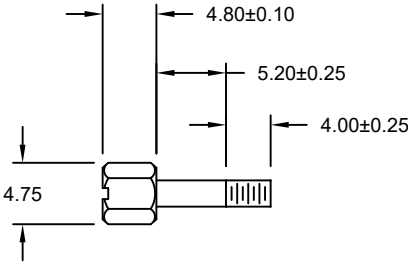
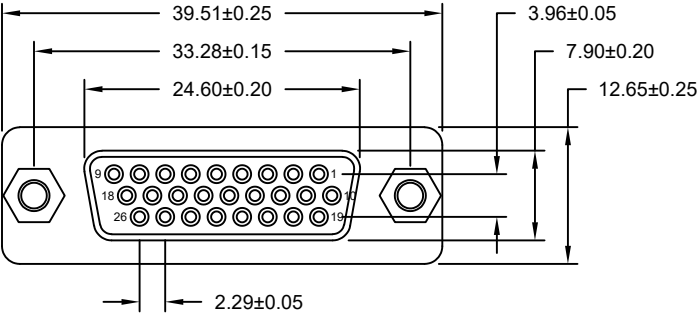
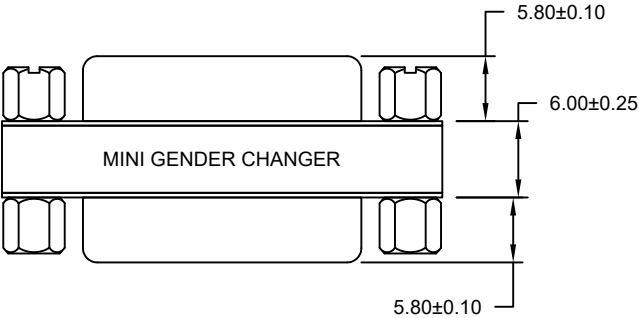
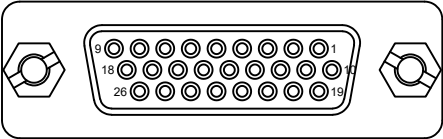


SPECIFICATIONS:

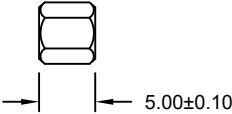
**MATERIALS:**  
HOUSING: PBT, UL94 V-0  
CONTACTS: GOLD FLASH PLATED BRASS  
SHELL: TIN PLATED STEEL

**ELECTRICAL:**  
RATED CURRENT: 3A  
WORKING VOLTAGE: 250V  
INSULATION RESISTANCE: 1000 MOhms MIN.  
CONTACT RESISTANCE: 15 mOhms MAX.

**ENVIRONMENT:**  
OPERATING TEMPERATURE: -55°C TO +105°C



UNC #4-40 HEXSCREW (INTERNAL & EXTERNAL THREADS)



UNC #4-40 HEXNUT (INTERNAL THREADS)

26-PIN FEMALE	26-PIN FEMALE
1	1
2	2
3	3
...	
25	25
26	26
SHELL	SHELL
PIN OUT	

RoHS COMPLIANT



THESE DRAWINGS AND SPECIFICATIONS ARE THE PROPERTY OF NorComp AND SHALL NOT BE REPRODUCED, COPIED OR USED AS THE BASIS FOR THE MANUFACTURE OR SALE OF APPARATUS WITHOUT WRITTEN PERMISSION.

DRAWN: C. SMITH  
DATE: 10/12/2007

UNITS = inch [mm] DO NOT SCALE FROM DRAWING

NorComp

SCALE: NTS  
SHEET 1 OF 1  
REV 3  
DWG NO. GCHDLP26F26F

# Mouser Electronics

Authorized Distributor

Click to View Pricing, Inventory, Delivery & Lifecycle Information:

[NorComp:](#)

[GCHDLP26F26F](#)