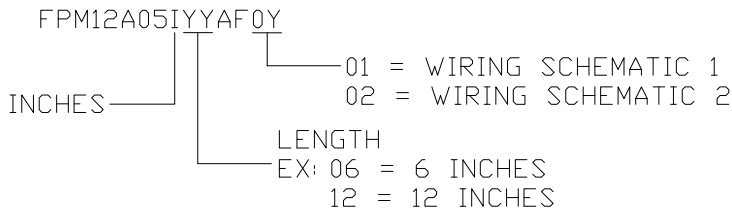


CONNECTOR: 859S005-203R0P4

**SEE PAGE 2 FOR DETAILS

WIRING SCHEMATIC

1	2
PIN	PIN
1 = BROWN	1 = RED
2 = WHITE	2 = GREEN
3 = BLUE	3 = BLACK
4 = BLACK	4 = WHITE
5 = GREY	5 = GREY



NOTE: PACKAGED 10 PER BAG

RoHS COMPLIANT

UNITS IN INCHES [MM] DO NOT SCALE FROM DRAWING



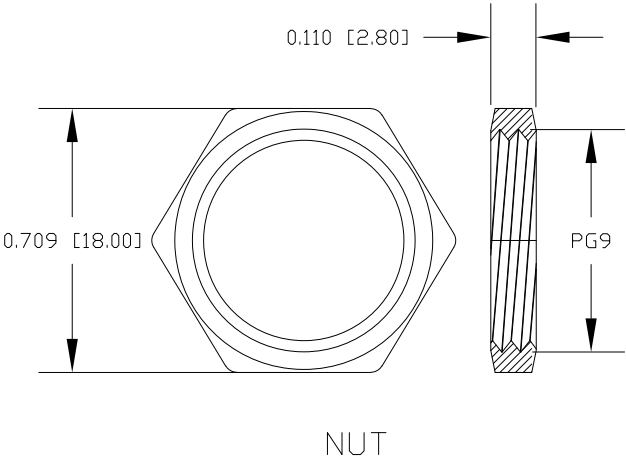
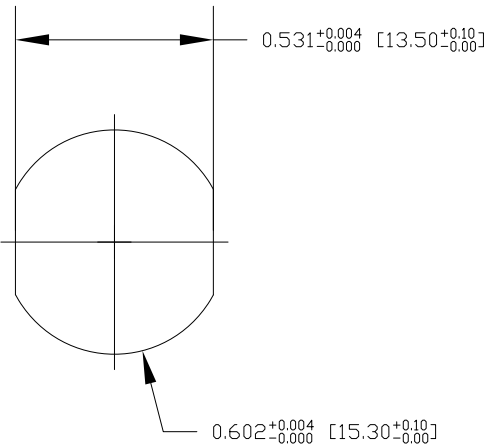
THESE DRAWINGS AND SPECIFICATIONS ARE THE PROPERTY OF NorComp AND SHALL NOT BE REPRODUCED, COPIED OR USED AS THE BASIS FOR THE MANUFACTURE OR SALE OF APPARATUS WITHOUT WRITTEN PERMISSION.

DRAWN:
G. BROWN
DATE:
01/23/2019

NorComp

SCALE: NTS	SHEET 1	OF 2	REV 2
DWG NO.	FPM12A05IYYAF0Y		

DESCRIPTION: M12 5 POSITION BRASS FEMALE PIGTAIL



NOTE:

MATERIAL

HOUSING: PBT UL94V-0, BLACK

CONTACT: BRASS

NUT: BRASS

SHELL: BRASS

O-RING: EPDM, BLACK

FINISH

CONTACT: GOLD PLATED, 10μ" Min.

UNDER PLATE: NICKEL

NUT: NICKEL PLATED

SHELL: NICKEL PLATED

ELECTRICAL

RATED CURRENT: 4A

RATED VOLTAGE: 60V

INSULATION RESISTANCE: 100MΩ MIN

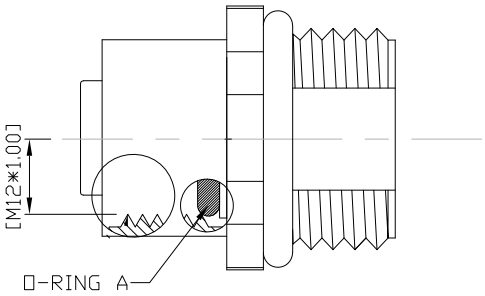
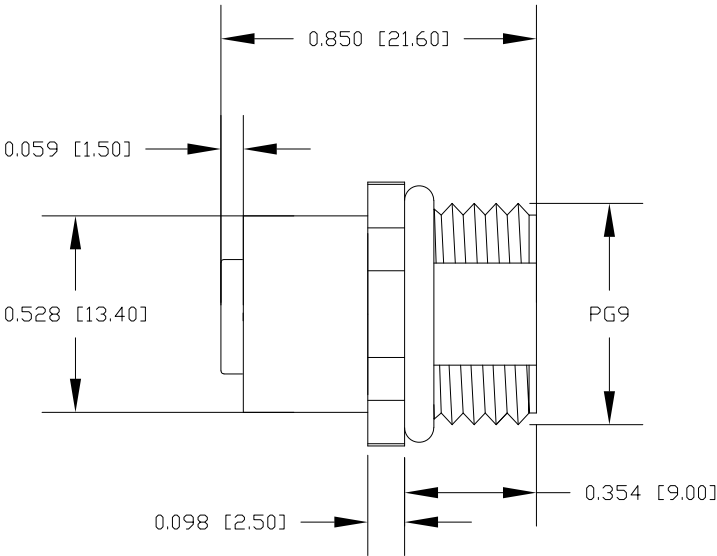
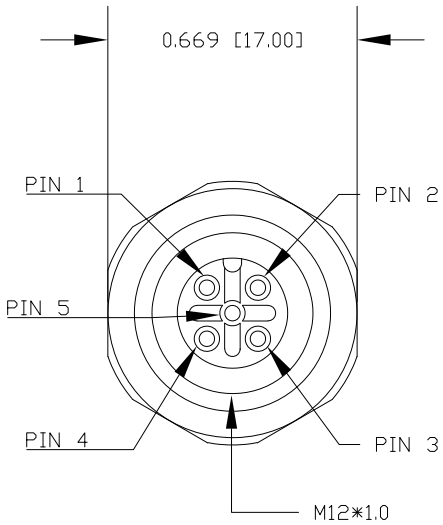
CONTACT RESISTANCE: 10mΩ MAX

WATER PROOF: IP67/68

ENVIRONMENT

OPERATION TEMPERATURE: -40°C ~ +85°C

RECOMMENDED PANEL CUT-OUT



RoHS COMPLIANT

UNITS IN INCHES [MM] DO NOT SCALE FROM DRAWING



THESE DRAWINGS AND SPECIFICATIONS ARE THE PROPERTY OF NorComp AND SHALL NOT BE REPRODUCED, COPIED OR USED AS THE BASIS FOR THE MANUFACTURE OR SALE OF APPARATUS WITHOUT WRITTEN PERMISSION.

DRAWN:
G. BROWN

DATE:
01/23/2019

NorComp

SCALE:
NTS

DWG NO.

SHEET
2

OF
2

REV
2

FPM12A05IYYAF0Y

Mouser Electronics

Authorized Distributor

Click to View Pricing, Inventory, Delivery & Lifecycle Information:

NorComp:

[FPM12A05I06AF01](#) [FPM12A05I06AF02](#) [FPM12A05I12AF01](#) [FPM12A05I12AF02](#)