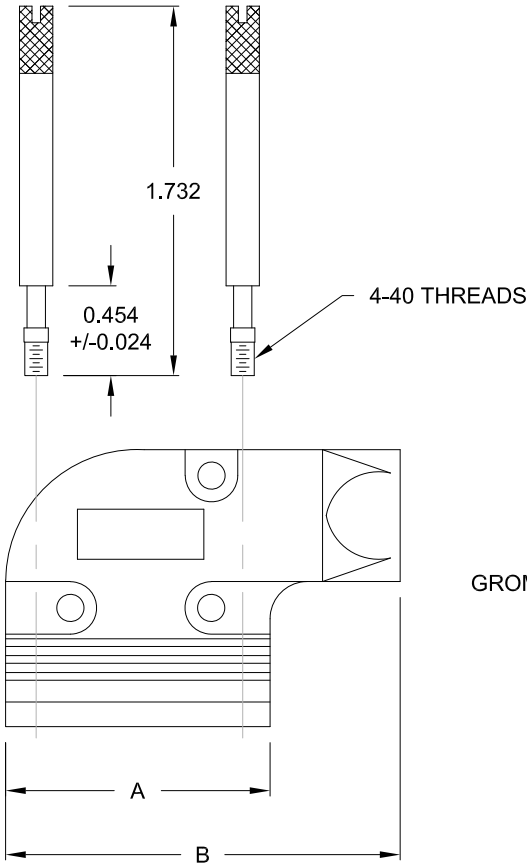


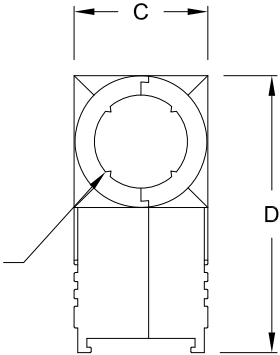
DIMENSIONS (IN.)				
No. OF PINS	A	B	C	D
9	1.265	1.850	0.628	1.300
15	1.580	2.314	0.639	1.300
25	2.130	2.840	0.650	1.300

BACKSHELL KIT INCLUDES:

- (2) BACKSHELL HALVES
- (3) HOUSING SCREWS & NUTS
- (2) THUMBSCREWS
- (1) GROMMET TREE (NON-CONDUCTIVE) [162-000-925R000]



GROMMET TREE SIZES INSIDE Ø  
0.185"  
0.248"  
0.290"  
0.324"



981-YYY-130R121

POSITIONS  
009  
015  
025

1 = THUMBSCREWS

MATERIAL  
30 = ZINC

COLOR  
12 = NICKEL OVER COPPER

PUT-UPS  
1 = KIT

MATERIAL: DIE-CAST ZINC ALLOY, NICKEL PLATED  
OPERATING TEMPERATURE: -45°C TO +120°C

RoHS COMPLIANT



THESE DRAWINGS AND SPECIFICATIONS ARE THE PROPERTY OF NorComp AND SHALL NOT BE REPRODUCED, COPIED OR USED AS THE BASIS FOR THE MANUFACTURE OR SALE OF APPARATUS WITHOUT WRITTEN PERMISSION.

DRAWN:  
C. SMITH  
DATE:  
02/16/2007

UNITS = INCHES

DO NOT SCALE FROM DRAWING

NorComp

SCALE:  
NTS

SHEET 1 OF 1

REV 4

DWG NO. 981-YYY-130R121

# Mouser Electronics

Authorized Distributor

Click to View Pricing, Inventory, Delivery & Lifecycle Information:

NorComp:

[981-009-130R121](#) [981-025-130R121](#) [981-015-130R121](#)