

DESCRIPTION: 971 SERIES D-SUB BACKSHELL

BACKSHELL KIT INCLUDES:

- (2) BACKSHELL HALVES
- (2) 4-40 THUMBSCREWS
- (2) HOUSING SCREWS & 2 NUTS
- (1) COMPRESSION RING - VARIOUS SIZES
Ø0.157 [4.0], Ø0.197 [5.0], Ø0.276 [7.0], Ø0.354 [9.0]

NOTE: 9 POSITION HAS ONLY 1 THUMBSCREW
(OPPOSITE CABLE ENTRY)

****NOTE: 3.0 IN/LBS IS
RECOMMENDED TORQUE VALUE
FOR HOUSING SCREWS/NUTS****

971-YYY-010R011

SERIES _____

POSITIONS _____

009 _____

015 _____

025 _____

037 _____

MATERIAL _____

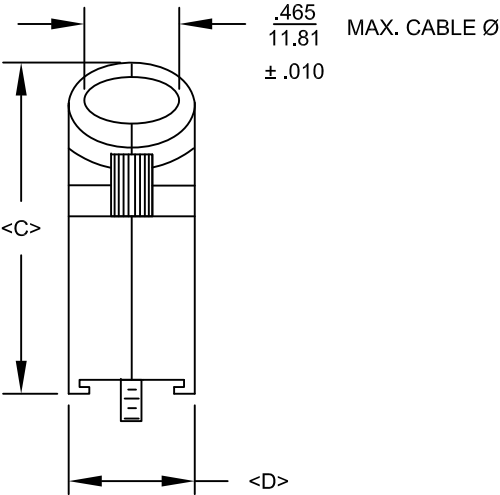
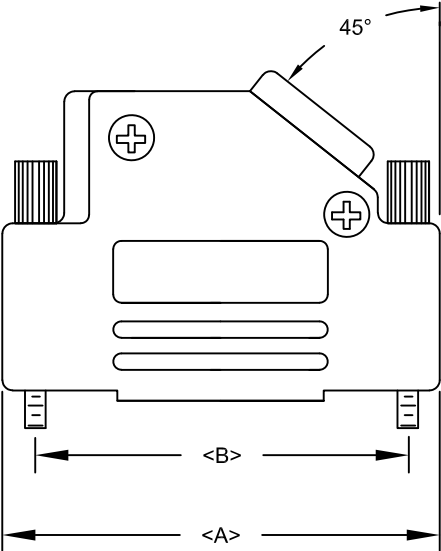
010 = PLASTIC _____

COLOR: _____

01 = BLACK _____

PUT-UPS _____

1 = KIT _____



DIMENSIONS(mm/in) *tolerances are in mm				
SIZE	A ^{+1.70 -0.50}	B ^{+0.25 -0.010}	C ^{+2.40 -0.50}	D ^{+0.85 -0.30}
9	31.00	24.99	36.30	15.00
	1.220	0.984	1.429	0.591
15	39.50	33.32	40.30	15.00
	1.555	1.312	1.587	0.591
25	53.20	47.04	40.30	15.00
	2.094	1.852	1.587	0.591
37	69.70	63.50	40.30	15.00
	2.744	2.500	1.587	0.591

PLASTIC: ABS POLYLAC - BLACK - UL 94-HB

JACKSCREWS: STEEL - BLACK


HOOD SCREWS: STEEL - BLACK

COMPRESSION INSERTS: ABS UL 94-HB

NUTS: STEEL - BLACK

OPERATING TEMP: -55°C TO +110 °C

RoHS COMPLIANT



THESE DRAWINGS AND SPECIFICATIONS ARE THE PROPERTY OF NorComp AND SHALL NOT BE REPRODUCED, COPIED OR USED AS THE BASIS FOR THE MANUFACTURE OR SALE OF APPARATUS WITHOUT WRITTEN PERMISSION.

NorComp

DRAWN: PAM JENKINS

DATE: 6-10-05

SCALE: NTS

SHEET 1 OF 1

REV 10

DWG NO. 971-YYY-010R011

Mouser Electronics

Authorized Distributor

Click to View Pricing, Inventory, Delivery & Lifecycle Information:

NorComp:

971-025-010R011