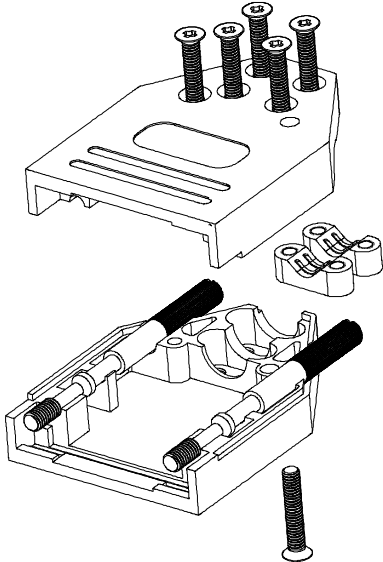
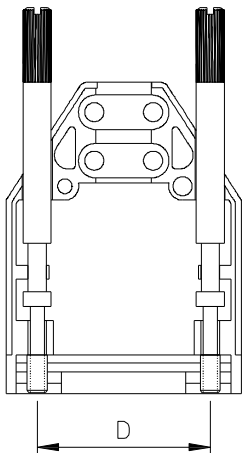
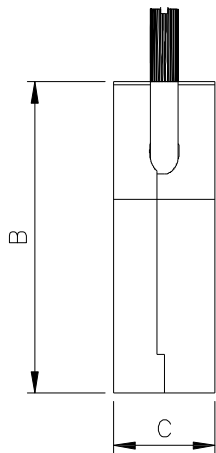
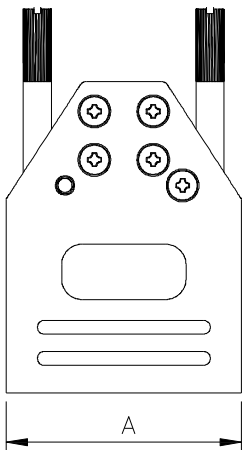


DESCRIPTION: STRAIGHT ENTRY BACKSHELL - CLAMP STRAIN RELIEF



BACKSHELL MATERIAL:
PLATING:
JACKSCREWS:
CLAMP SCREWS:
CLAMPS:
OPERATING TEMP:

DIE-CAST ZINC ALLOY
NICKEL
STEEL:NICKEL PLATED
STEEL:ZN PLATED
ZINC DIE CAST
-40°C TO+120°C

DIMENSIONS						
SIZE		A	B	C	D	MAX WIRE DIAMETER (W/O CLAMPS)
TOLERANCE		±0.50MM/ ±0.02IN	±0.50MM/ ±0.02IN	±0.50MM/ ±0.02IN	±0.25MM/ ±0.01IN	-
9	MM	34.0	45.0	14.6	24.99	8.0
	IN	1.34	1.77	0.57	0.98	0.314
15	MM	43.0	45.0	14.6	33.32	11.6
	IN	1.69	1.77	0.57	1.31	0.456
25	MM	56.5	45.0	14.6	47.04	11.6
	IN	2.22	1.77	0.57	1.85	0.456
37	MM	73.0	45.0	14.6	63.50	11.6
	IN	2.87	1.77	0.57	2.50	0.456
50	MM	71.0	45.0	17.4	61.00	14.0
	IN	2.80	1.77	0.69	2.40	0.551

961-YYY-030R121

009 = 9 POSITION
015 = 15 POSITION
025 = 25 POSITION
037 = 37 POSITION
050 = 50 POSITION

BACKSHELL KIT INCLUDES:

(2) BACKSHELL HALVES
(2) 4-40 THUMBSCREWS
(6) CLAMP SCREWS (RECOMMENDED TORQUE 3 in-lbs)
(2) CLAMPS

RoHS COMPLIANT



THESE DRAWINGS AND SPECIFICATIONS ARE THE PROPERTY OF NorComp AND SHALL NOT BE REPRODUCED, COPIED OR USED AS THE BASIS FOR THE MANUFACTURE OR SALE OF APPARATUS WITHOUT WRITTEN PERMISSION.

DRAWN:
J. KADEL

DATE:
11/13/2018

UNITS = INCHES [MM] DO NOT SCALE FROM DRAWING

NorComp

SCALE: NTS
SHEET 1 OF 1
REV 2
DWG NO. 961-YYY-030R121

Mouser Electronics

Authorized Distributor

Click to View Pricing, Inventory, Delivery & Lifecycle Information:

[NorComp:](#)

[961-009-030R121](#) [961-015-030R121](#) [961-025-030R121](#) [961-037-030R121](#) [961-050-030R121](#)