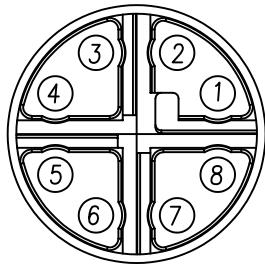


NUT



PIN ASSIGNMENTS
FRONT VIEW

NOTE:

MATERIAL

HOUSING:	PBT UL94V-0, BLACK
CONTACT:	BRASS
SHELL:	ZINC ALLOY
NUT:	BRASS
BACK SHELL:	BRASS

FINISH

CONTACT:	GOLD 10 μ " MIN. OVER 50 μ " NICKEL
SHELL:	NICKEL PLATED
NUT:	NICKEL PLATED
BACK SHELL:	NICKEL PLATED

ELECTRICAL

RATED CURRENT:	0.5A
RATED VOLTAGE:	50VAC/60VDC
INSULATION RESISTANCE:	100 MOhms MIN.
CONTACT RESISTANCE:	10 mOhms MAX.
WATER PROOF:	IP67

ENVIRONMENT

OPERATION TEMPERATURE:	-40°C TO +85°C
MAX WIRE AWG:	24

858-X08-103RLS4

*SEE PAGE 2

0 = $\phi 7.5$ mm BACK SHELL

L = $\phi 9.0$ mm BACK SHELL

N = NO BACK SHELL INCLUDED

3 = BRASS/NICKEL (B/N) BACK SHELL & NUT

T = B/N BACK SHELL / STAINLESS STEEL NUT

1 = GOLD FLASH

4 = 10 μ " GOLD

RoHS COMPLIANT

UNITS = inch [mm]

DO NOT SCALE FROM DRAWING



THESE DRAWINGS AND SPECIFICATIONS ARE THE PROPERTY OF NorComp AND SHALL NOT BE REPRODUCED, COPIED OR USED AS THE BASIS FOR THE MANUFACTURE OR SALE OF APPARATUS WITHOUT WRITTEN PERMISSION.

DRAWN:
M. SIGMON

DATE:
08/12/2016

NorComp

SCALE:
NTS

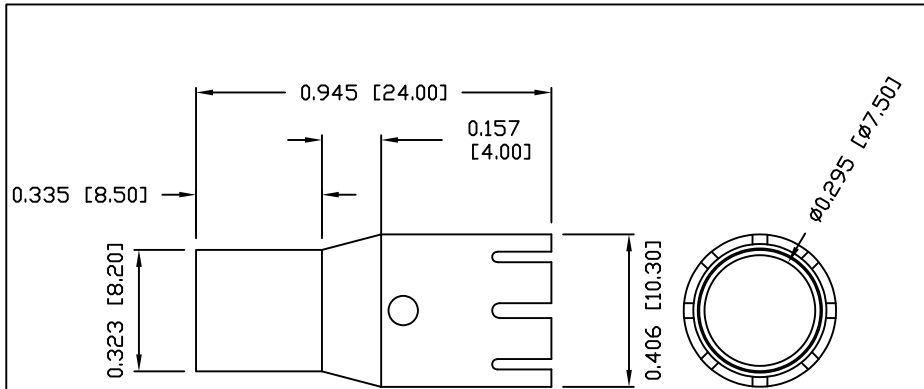
SHEET OF
1 2

REV
8

DWG NO.

858-X08-103RLS4

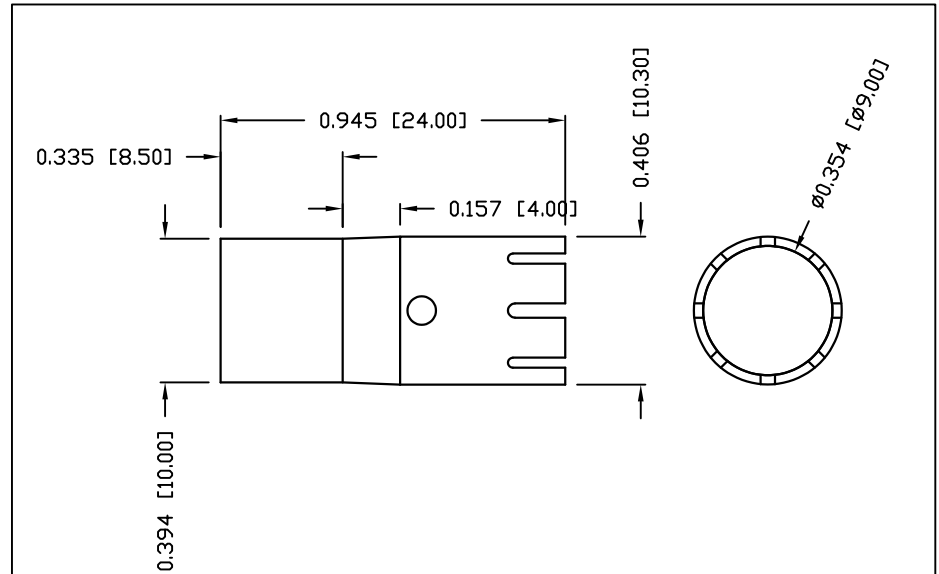
BACK SHELL
OPTION "O"



RECOMMENDED
CRIMPING INSTRUCTIONS
OPTION "O"

1. BUILD UP WIRE OD TO min $\phi 7.0\text{mm}$ W/ HEATSHRINK
2. USE 0.305" HEX CRIMP TOOL
*MAY NOT BE SUITABLE FOR ALL APPLICATIONS

BACK SHELL
OPTION "L"



RECOMMENDED
CRIMPING INSTRUCTIONS
OPTION "L"

1. BUILD UP WIRE OD TO $\phi 8.3\text{mm}-\phi 8.5\text{mm}$ W/ HEATSHRINK
2. USE 0.350" HEX CRIMP TOOL
*MAY NOT BE SUITABLE FOR ALL APPLICATIONS

RoHS COMPLIANT



THESE DRAWINGS AND SPECIFICATIONS ARE THE PROPERTY OF NorComp AND SHALL NOT BE REPRODUCED, COPIED OR USED AS THE BASIS FOR THE MANUFACTURE OR SALE OF APPARATUS WITHOUT WRITTEN PERMISSION.

DRAWN:
M. SIGMON

DATE:
08/12/2016

UNITS = inch [mm]

DO NOT SCALE FROM DRAWING

NorComp

SCALE:
NTS

SHEET OF
2 2

REV
8

DWG NO.

858-X08-103RLS4

Mouser Electronics

Authorized Distributor

Click to View Pricing, Inventory, Delivery & Lifecycle Information:

[NorComp:](#)

[858-X08-103RLS4](#) [858-X08-10TRLS4](#) [858-XL8-10TRLS4](#)