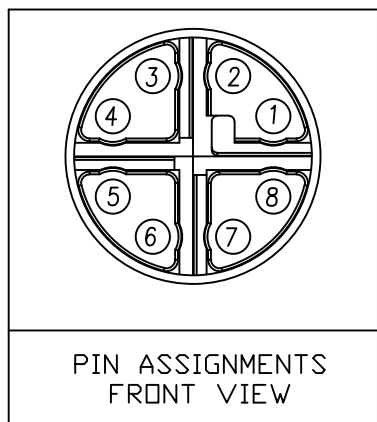


NUT

PIN ASSIGNMENTS
FRONT VIEW

NOTE:

MATERIAL

HOUSING:

CONTACT:

SHELL:

NUT:

BACK SHELL:

FINISH

CONTACT:

SHELL:

NUT:

BACK SHELL:

ELECTRICAL

RATED CURRENT:

RATED VOLTAGE:

INSULATION RESISTANCE:

CONTACT RESISTANCE:

WATER PROOF:

ENVIRONMENT

OPERATION TEMPERATURE:

MAX WIRE AWG:

PBT UL94V-0, BLACK

BRASS

ZINC ALLOY

BRASS

BRASS

GOLD 10µ" MIN.

OVER 50µ" NICKEL

NICKEL PLATED

NICKEL PLATED

NICKEL PLATED

0.5A

50VAC/60VDC

100 MΩhms MIN.

10 mΩhms MAX.

IP67

-40°C TO +85°C

24

858-X08-103RLS4

*SEE PAGE 2

0 = ø7.5mm BACK SHELL

L = ø9.0mm BACK SHELL

3 = BRASS/NICKEL (B/N) BACK SHELL & NUT
T = B/N BACK SHELL / STAINLESS STEEL NUT

1 = GOLD FLASH

4 = 10µ" GOLD

RoHS COMPLIANT

THESE DRAWINGS AND SPECIFICATIONS ARE
THE PROPERTY OF NorComp AND SHALL NOT
BE REPRODUCED, COPIED OR USED AS THE
BASIS FOR THE MANUFACTURE OR SALE OF
APPARATUS WITHOUT WRITTEN PERMISSION.

DRAWN:

M. SIGMON

DATE:

08/12/2016

UNITS = inch [mm]

DO NOT SCALE FROM DRAWING

NorComp

SCALE:

NTS

SHEET

OF

1

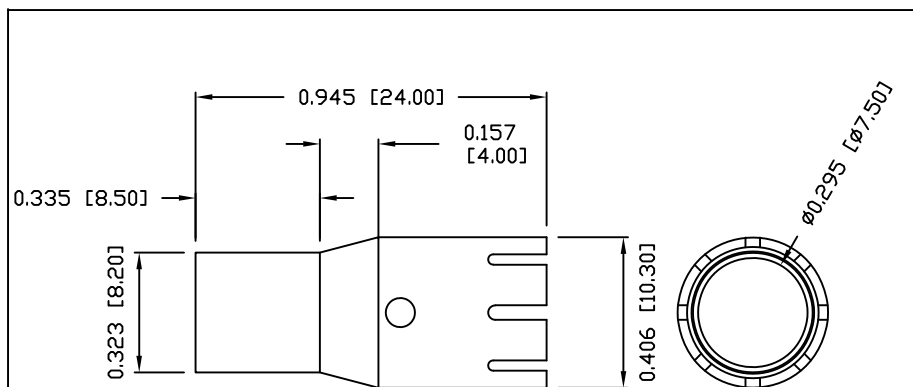
2

REV

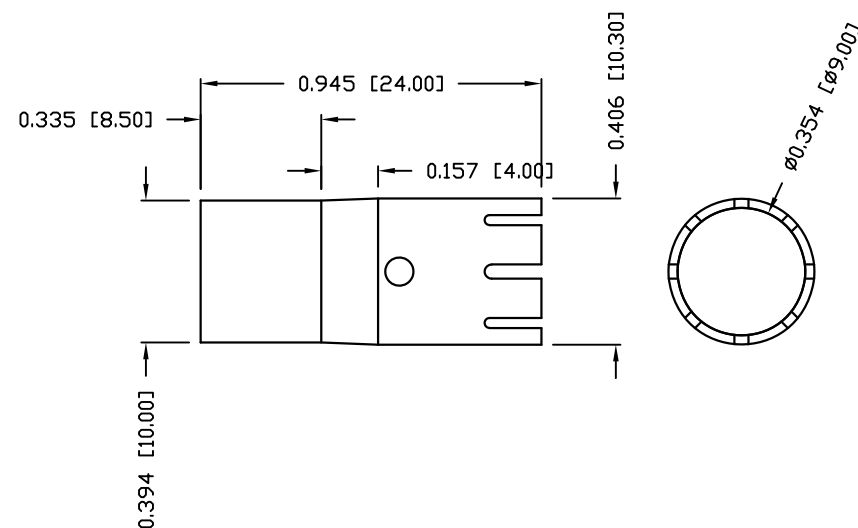
7

DWG NO.

858-X08-103RLS4

BACK SHELL
OPTION "O"RECOMMENDED
CRIMPING INSTRUCTIONS
OPTION "O"

1. BUILD UP WIRE OD TO min $\phi 7.0\text{mm}$ W/ HEATSHRINK
 2. USE 0.305" HEX CRIMP TOOL
- *MAY NOT BE SUITABLE FOR ALL APPLICATIONS

BACK SHELL
OPTION "L"RECOMMENDED
CRIMPING INSTRUCTIONS
OPTION "L"

1. BUILD UP WIRE OD TO $\phi 8.3\text{mm}$ – $\phi 8.5\text{mm}$ W/ HEATSHRINK
 2. USE 0.350" HEX CRIMP TOOL
- *MAY NOT BE SUITABLE FOR ALL APPLICATIONS

RoHS COMPLIANT



THESE DRAWINGS AND SPECIFICATIONS ARE THE PROPERTY OF NorComp AND SHALL NOT BE REPRODUCED, COPIED OR USED AS THE BASIS FOR THE MANUFACTURE OR SALE OF APPARATUS WITHOUT WRITTEN PERMISSION.

DRAWN:

M. SIGMON

DATE:

08/12/2016

UNITS = inch [mm]

DO NOT SCALE FROM DRAWING

NorComp

SCALE:

NTS

SHEET

2

OF

2

REV

7

DWG NO.

858-X08-103RLS4

Mouser Electronics

Authorized Distributor

Click to View Pricing, Inventory, Delivery & Lifecycle Information:

[NorComp:](#)

[858-X08-103RLS4](#)