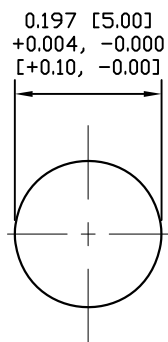


NUT



RECOMMEND PANEL CUT-OUT  
MAX. PANEL THICKNESS: 0.063" [1.60]

## NOTE:

MATERIAL  
HOUSING: PBT UL94V-0, BLACK  
CONTACT: BRASS  
NUT: BRASS  
O-RING: NBR, BLACK  
BACK HOUSING: PBT UL94V-0, BLACK  
DOWN HOUSING: PBT UL94V-0, BLACK

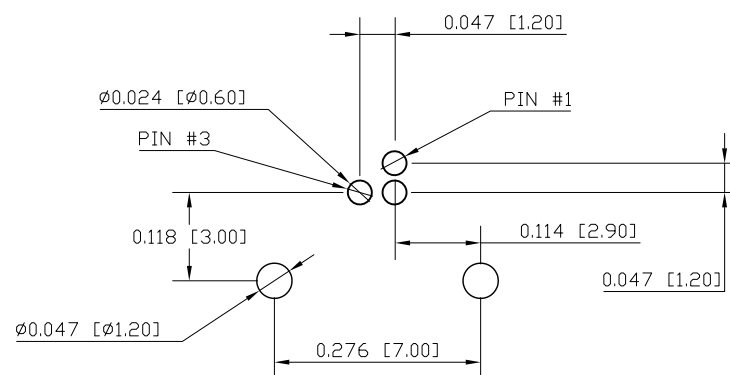
FINISH  
CONTACT: GOLD PLATED  
OVER 50μ" NICKEL  
NUT: NICKEL PLATED

ELECTRICAL  
RATED CURRENT: 1A  
RATED VOLTAGE: 60V  
INSULATION RESISTANCE: 100 MΩhms MIN.  
CONTACT RESISTANCE: 10 mΩhms MAX.  
WATER PROOF: IP67

ENVIRONMENT  
OPERATION TEMPERATURE: -40°C TO +85°C

853-003-113R00Y

1 = GOLD FLASH  
4 = 10μ" GOLD

RECOMMENDED PCB  
LAYOUT

RoHS COMPLIANT

UNITS = INCHES [MM]

DO NOT SCALE FROM DRAWING



THESE DRAWINGS AND SPECIFICATIONS ARE THE PROPERTY OF NorComp AND SHALL NOT BE REPRODUCED, COPIED OR USED AS THE BASIS FOR THE MANUFACTURE OR SALE OF APPARATUS WITHOUT WRITTEN PERMISSION.

DRAWN:

M. SIGMON

DATE:

03-04-16

NorComp

SCALE:

NTS

SHEET

1

OF

1

REV

6

DWG NO.

853-003-113R00Y

# Mouser Electronics

Authorized Distributor

Click to View Pricing, Inventory, Delivery & Lifecycle Information:

NorComp:

[853-003-113R001](#) [853-003-113R004](#)