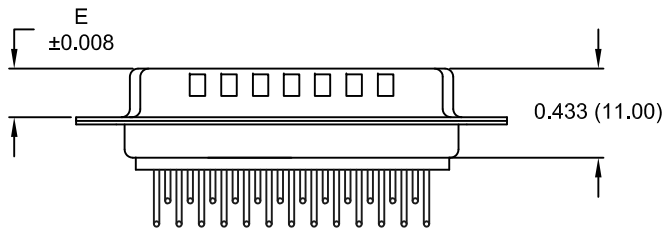
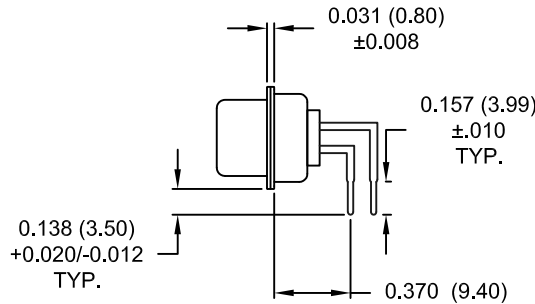
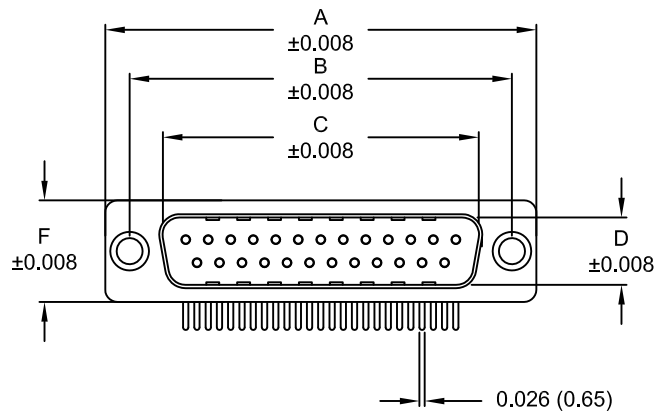


DESCRIPTION: MALE - 0.370 RIGHT ANGLE / MACHINED



DIMENSIONS (inch/mm)						
No. OF PINS	A	B	C	D	E	F
9	1.213	0.984	0.665	0.327	0.240	0.492
	30.80	25.00	16.90	8.30	6.10	12.50
15	1.543	1.311	0.994	0.327	0.240	0.492
	39.20	33.30	25.25	8.30	.6.10	12.50
25	2.089	1.852	1.533	0.327	0.240	0.492
	53.05	47.05	38.95	8.30	6.10	12.50

**774-EYY-11YRYY1**

- SERIES \_\_\_\_\_
- POSITIONS \_\_\_\_\_
- E09
- E15
- E25
- GENDER \_\_\_\_\_
- 1 = MALE
- TERMINATION \_\_\_\_\_
- 1 = PC MOUNTING
- SHELL PLATING \_\_\_\_\_
- 3 = NICKEL (GROUND INDENTS)
- RoHS COMPLIANT \_\_\_\_\_
- HARDWARE OPTIONS \_\_\_\_\_
- 00 = NO HARDWARE
- 01 = 0.098" CLINCH NUT (BOARD SIDE)
- 14 = SHORT BRACKET WITH 4-40 SCREW LOCK
- 24 = SHORT BRACKET WITH 4-40 SCREW
- 46 = BRACKET WITH 4-40 INSERT AND BOARDLOCK
- PLATING OPTIONS \_\_\_\_\_
- 1 = GOLD FLASH
- 2 = 30MICRO-INCH GOLD
- 3 = 50 MICRO-INCH GOLD

**MEETS IP67 STANDARDS**  
(SEE PAGE 3 FOR SEALING DETAILS)

**MATERIAL:**

- SHELL: STEEL, NICKEL PLATED
- INSULATOR: UL 94V-O RATED, WHITE PA6T
- PROCESS TEMP.: 260° PROCESS TEMPERATURE
- CONTACT: PRECISION MACHINED COPPER ALLOY
- SEALING MATERIAL: FLEXIBLE F08 ADHESIVE

**ELECTRICAL:**

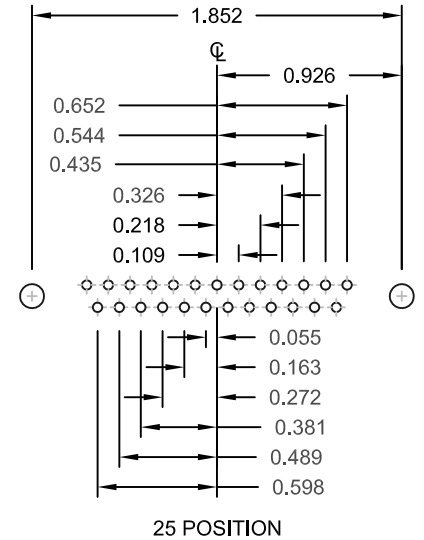
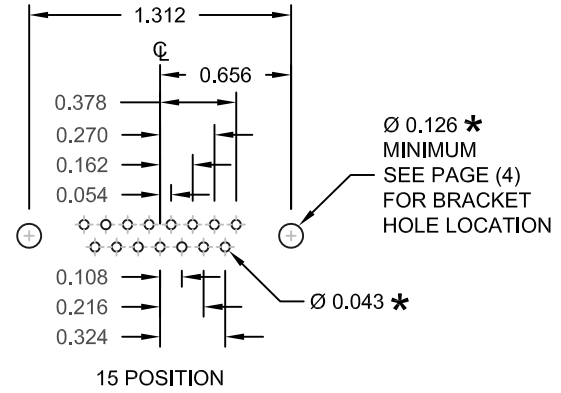
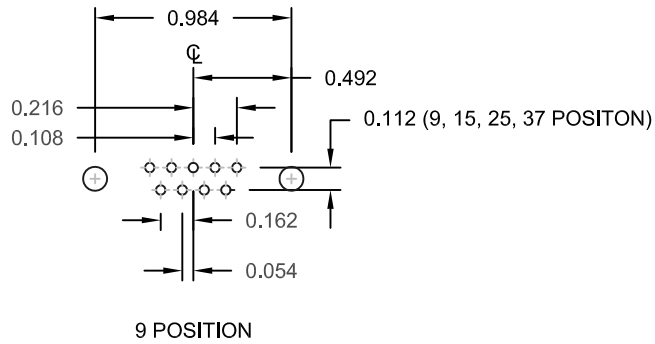
- CURRENT RATING: 5 AMPS
- CONTACT RESISTANCE: 10 mOhms Max.
- INSULATION RESISTANCE: 5 GOhms Min.
- VOLTAGE: 1000 V AC FOR 1 MINUTE
- TEMPERATURE: -55° C TO +125° C

UNITS = inch [mm]

**DO NOT SCALE FROM DRAWING**

**RoHS COMPLIANT**


	THESE DRAWINGS AND SPECIFICATIONS ARE THE PROPERTY OF NorComp AND SHALL NOT BE REPRODUCED, COPIED OR USED AS THE BASIS FOR THE MANUFACTURE OF SALE OF APPARATUS WITHOUT WRITTEN PERMISSION.		DRAWN: C. SMITH	DATE: 03-26-09
	<b>NorComp</b>		SCALE: NTS	SHEET OF 1 4
DWG NO. 774-EYY-11YRYY1				



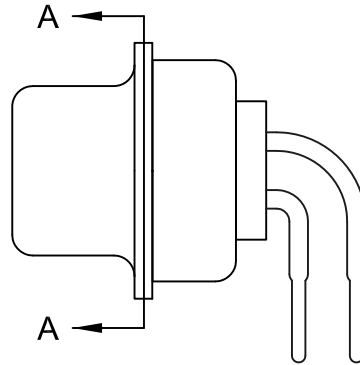
UNITS = inch

\* TYP.  
SUGGESTED SIZE  
MAY NOT BE SUITABLE FOR ALL APPLICATIONS

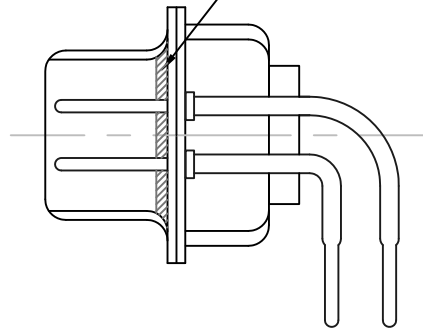
DO NOT SCALE FROM DRAWING

	THESE DRAWINGS AND SPECIFICATIONS ARE THE PROPERTY OF NorComp AND SHALL NOT BE REPRODUCED, COPIED OR USED AS THE BASIS FOR THE MANUFACTURE OF SALE OF APPARATUS WITHOUT WRITTEN PERMISSION.		DRAWN: C. SMITH	DATE: 03-26-09
	<h1>NorComp</h1>		SCALE: NTS	SHEET OF 2 4
DWG NO. 774-EYY-11YRY1				

DESCRIPTION: IP67 - MALE - MACHINED - SEALING PROCESS



FRONT SEAL APPLIED OVER INSULATOR AND BETWEEN FRONT & REAR SHELLS



DETAIL A-A

DO NOT SCALE FROM DRAWING



THESE DRAWINGS AND SPECIFICATIONS ARE THE PROPERTY OF NorComp AND SHALL NOT BE REPRODUCED, COPIED OR USED AS THE BASIS FOR THE MANUFACTURE OF SALE OF APPARATUS WITHOUT WRITTEN PERMISSION.

DRAWN:

C. SMITH

DATE:

03-26-09

SCALE:

NTS

SHEET

3

OF

4

REV

9

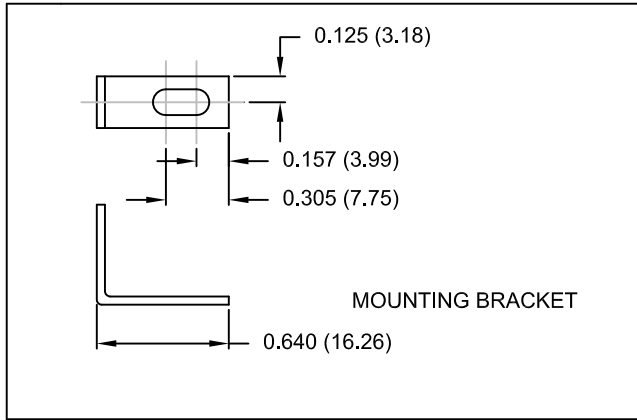
DWG NO.

774-EYY-11YRY1

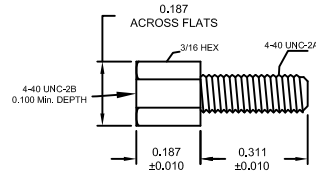
RoHS COMPLIANT

NorComp

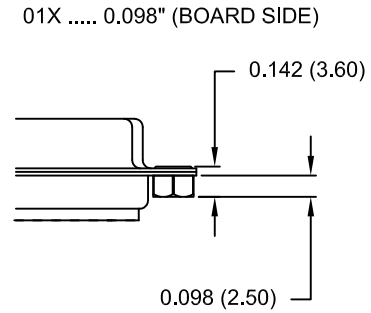
DESCRIPTION: HARDWARE



14Y = SHORT BRACKET & 4-40 FEMALE HEX SOCKET  
24Y = SHORT BRACKET & 4-40 SCREW

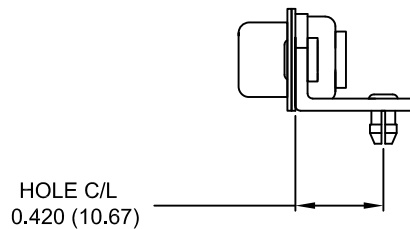


CLINCH-NUT HAS 4-40 INTERNAL THREADS



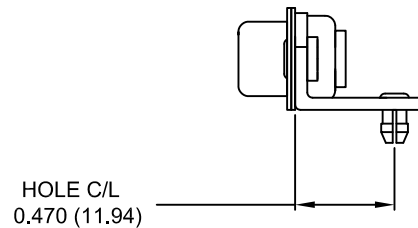
46Y = BRACKET WITH 4-40 INSERT AND BOARDLOCK

9-37 POSITION CONNECTOR BRACKET

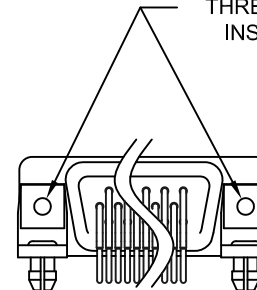


50 POSITION CONNECTOR BRACKET

NOTE: LOCATOR PLATE PRESENT ON 50 PIN ONLY



#4-40 THREADED INSERT



BRACKETS MOUNTED ON CONNECTOR

DO NOT SCALE FROM DRAWING

UNITS = inch [mm]

RoHS COMPLIANT



THESE DRAWINGS AND SPECIFICATIONS ARE THE PROPERTY OF NorComp AND SHALL NOT BE REPRODUCED, COPIED OR USED AS THE BASIS FOR THE MANUFACTURE OF SALE OF APPARATUS WITHOUT WRITTEN PERMISSION.

DRAWN: C. SMITH		DATE: 03-26-09	
SCALE: NTS	SHEET 4	OF 4	REV 9
DWG NO. 774-EYY-11YRY1			

NorComp

# Mouser Electronics

Authorized Distributor

Click to View Pricing, Inventory, Delivery & Lifecycle Information:

[NorComp:](#)

[774-E09-113R001](#) [774-E15-113R001](#) [774-E25-113R001](#) [774-E15-113R141](#) [774-E15-113R011](#) [774-E09-113R141](#)  
[774-E09-113R011](#) [774-E25-113R011](#) [774-E25-113R141](#)