

DESCRIPTION: COAXIAL / SIGNAL - RIGHT ANGLE - MALE - MACHINED

UNITS = INCHES [MM]

SPECIFICATIONS:

ELECTRICAL:

INSULATOR RESISTANCE:	5 GOHMS Min.
DIELECTRIC WITHSTANDING:	1,000VAC r.m.s.
OPERATING TEMPERATURE:	-55° C ~ +125° C
SIGNAL CONTACT RESISTANCE:	10 Milliohms Max.
COAXIAL CONTACT RESISTANCE:	2.7 Milliohms Max.
COAXIAL IMPEDANCE:	50 OHM
SIGNAL CURRENT RATING:	5 AMPS

MECHANICAL:

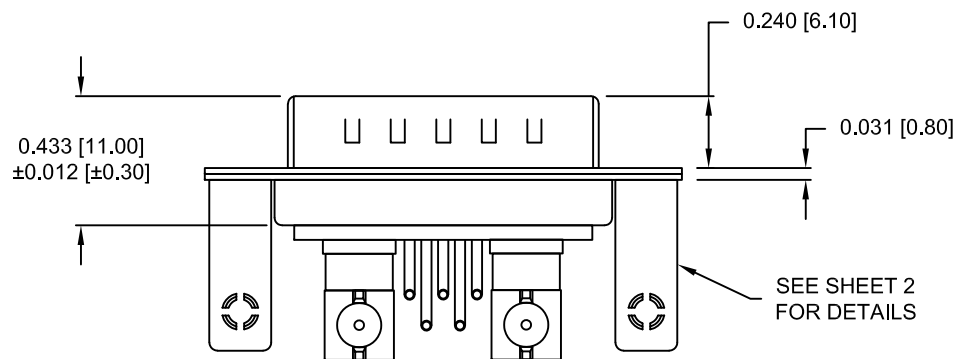
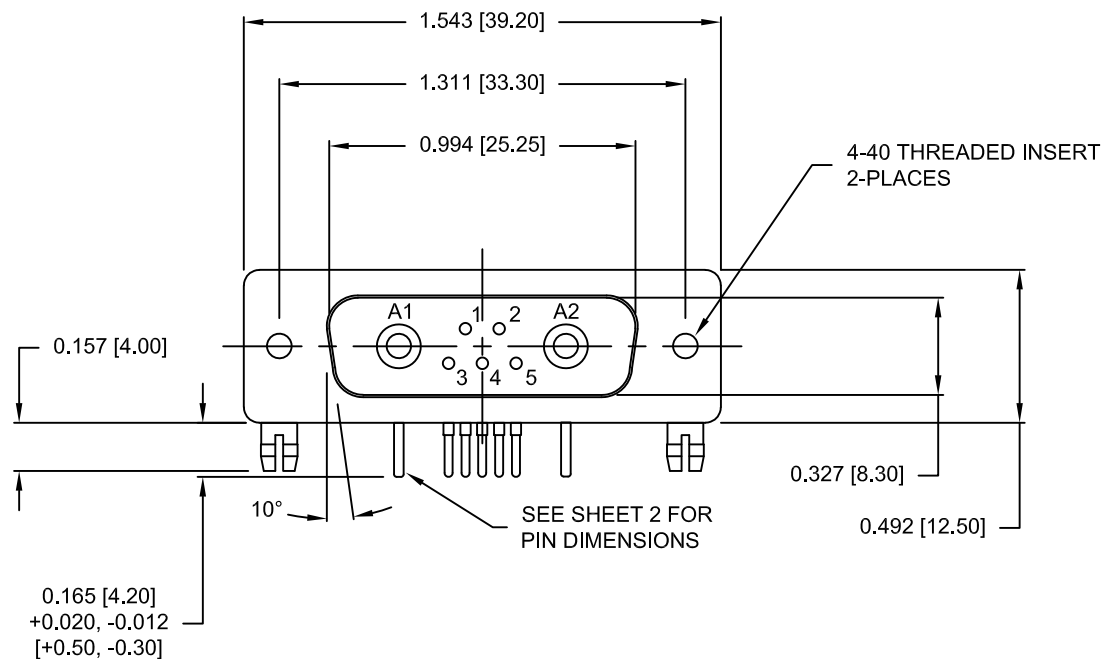
CONTACT INSERTION FORCE:	4.5 Kg Max.
CONTACT SEPARATOR FORCE:	0.3Kg Min.

MATERIALS:

CONTACTS:	COPPER ALLOY
INSULATOR:	PBT UL94V-0 RATED, BLACK 230°C PROCESS TEMP.
SHELL:	STEEL

FINISH:

SHELL:	NICKEL
CONTACTS:	FULL GOLD FLASH



685M7W2103L461

46 = 4-40 INSERTS /
BOARD LOCKS

RoHS COMPLIANT



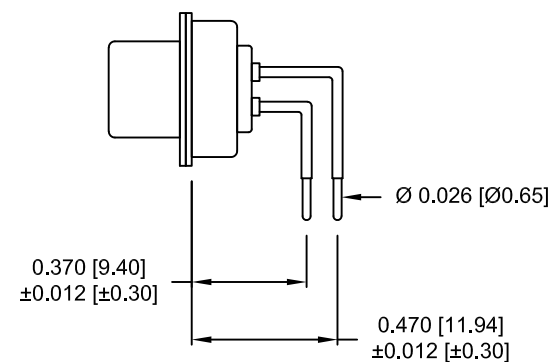
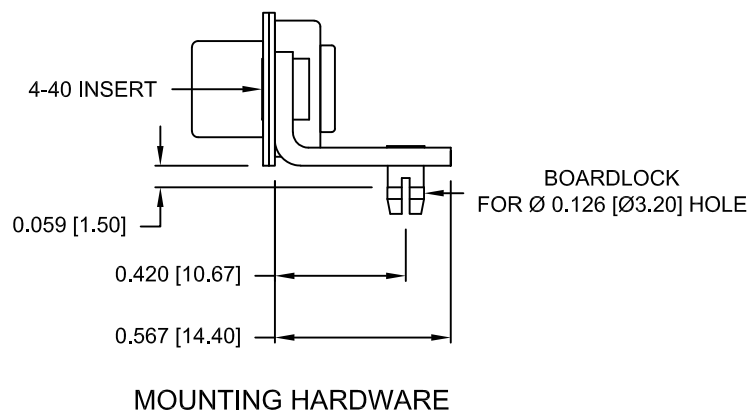
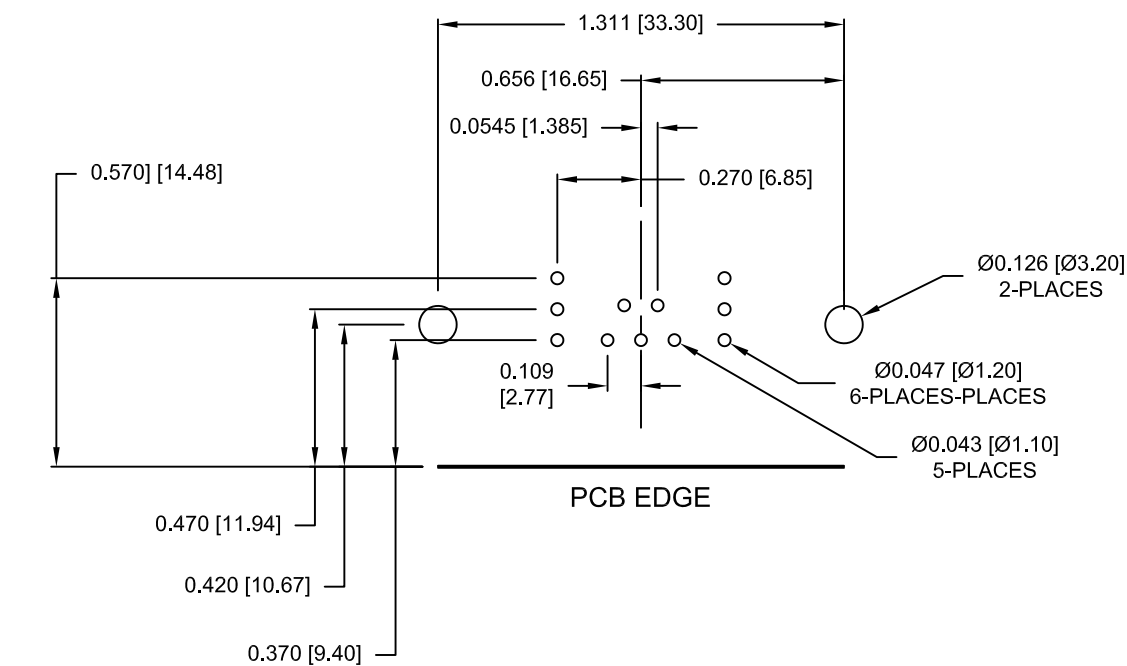
THESE DRAWINGS AND SPECIFICATIONS ARE THE PROPERTY OF NorComp AND SHALL NOT BE REPRODUCED, COPIED OR USED AS THE BASIS FOR THE MANUFACTURE OR SALE OF APPARATUS WITHOUT WRITTEN PERMISSION.

NorComp

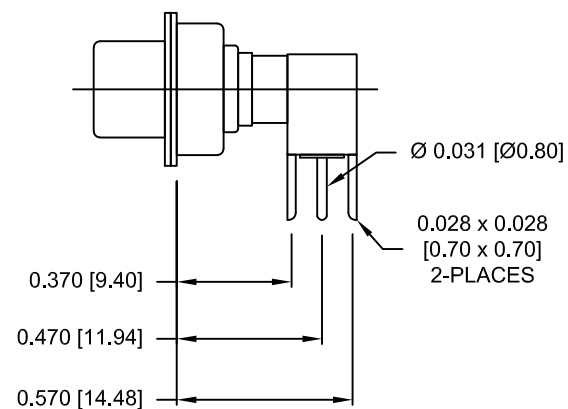
DRAWN: M. SIGMON		DATE: 03-03-15	
SCALE: 1.5 = 1	SHEET 1	OF 2	REV 1
DWG NO. 685M7W2103L461			

DESCRIPTION: 685M SERIES CONTACTS

NOTE:
COAXIAL CONTACTS COME
PRE-LOADED INTO INSULATORS




SIGNAL CONTACTS



50 OHM COAXIAL CONTACT

RoHS COMPLIANT

	THESE DRAWINGS AND SPECIFICATIONS ARE THE PROPERTY OF NorComp AND SHALL NOT BE REPRODUCED, COPIED OR USED AS THE BASIS FOR THE MANUFACTURE OR SALE OF APPARATUS WITHOUT WRITTEN PERMISSION.	DRAWN: M. SIGMON		DATE: 03-03-15	
NorComp		SCALE: 1.5 = 1	SHEET 2		OF 2
		DWG NO.	685M7W2103L461		
		REV 1			

Mouser Electronics

Authorized Distributor

Click to View Pricing, Inventory, Delivery & Lifecycle Information:

[NorComp:](#)

[685M7W2103L461](#)