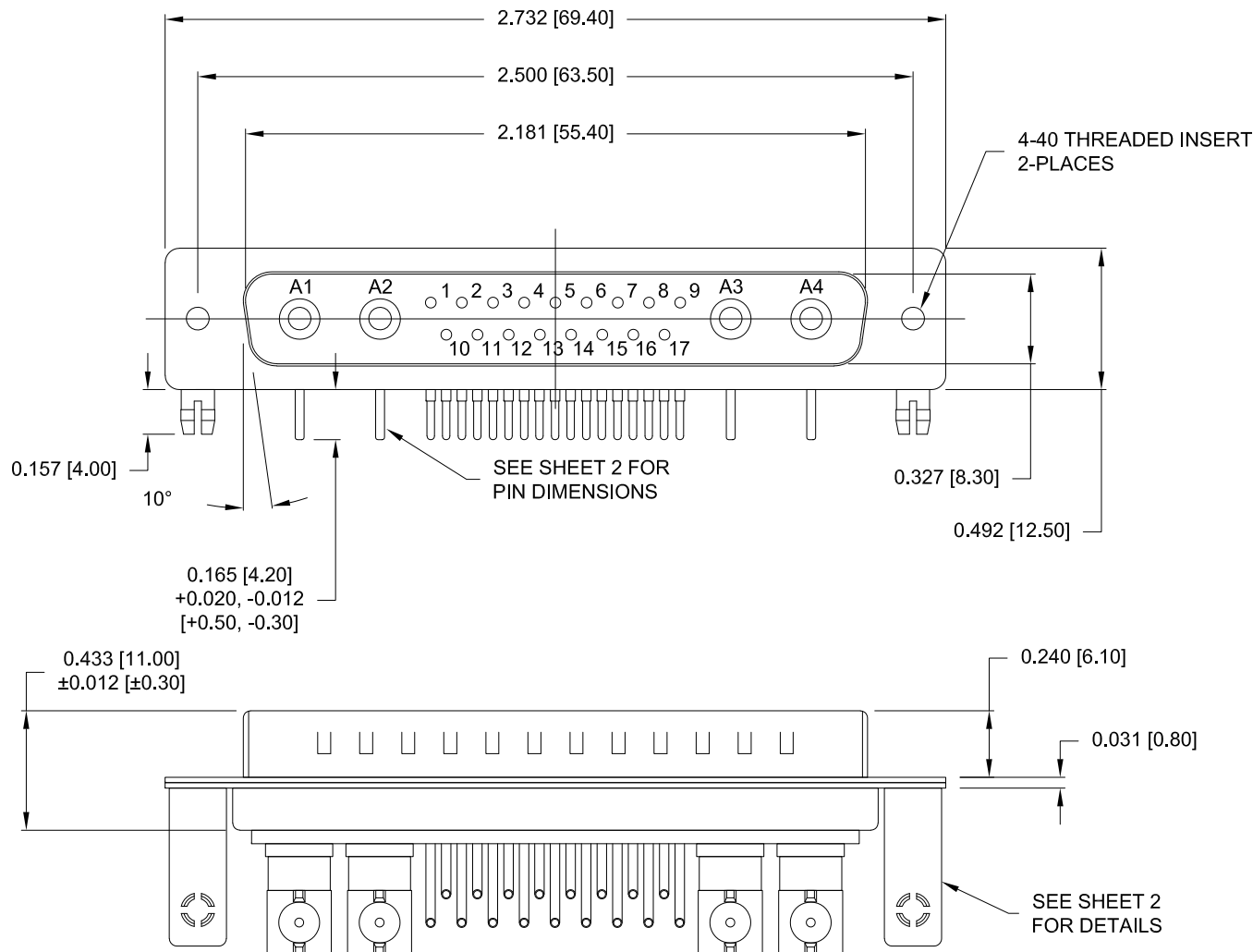


DESCRIPTION: 21WA4 // M // COAXIAL // RA PCB MOUNT



## SPECIFICATIONS:

### ELECTRICAL:

INSULATOR RESISTANCE:	5 GOHMS Min.
DIELECTRIC WITHSTANDING:	1,000VAC r.m.s.
OPERATING TEMPERATURE:	-55° C ~ +125° C
SIGNAL CONTACT RESISTANCE:	10 Milliohms Max.
COAXIAL CONTACT RESISTANCE:	2.7 Milliohms Max.
COAXIAL IMPEDANCE:	SEE P/N KEY BELOW
SIGNAL CURRENT RATING:	5 AMPS

### MECHANICAL:

CONTACT INSERTION FORCE:	4.5 Kg Max.
CONTACT SEPARATOR FORCE:	0.3Kg Min.

### MATERIALS:

CONTACTS:	COPPER ALLOY
INSULATOR:	PBT UL94V-0 RATED, BLACK 230°C PROCESS TEMP. STEEL

SHELL:

### FINISH:

SHELL:	NICKEL
CONTACTS:	FULL GOLD FLASH

# 685M21WA4PLY61

4 = 50 OHM	1 = Gold Flash
7 = 75 OHM	
6 = 4-40 Inserts / Board Locks	

RoHS COMPLIANT



THESE DRAWINGS AND SPECIFICATIONS ARE THE PROPERTY OF NorComp AND SHALL NOT BE REPRODUCED, COPIED OR USED AS THE BASIS FOR THE MANUFACTURE OR SALE OF APPARATUS WITHOUT WRITTEN PERMISSION.

DRAWN:  
M. SIGMON  
DATE:  
02/27/2015

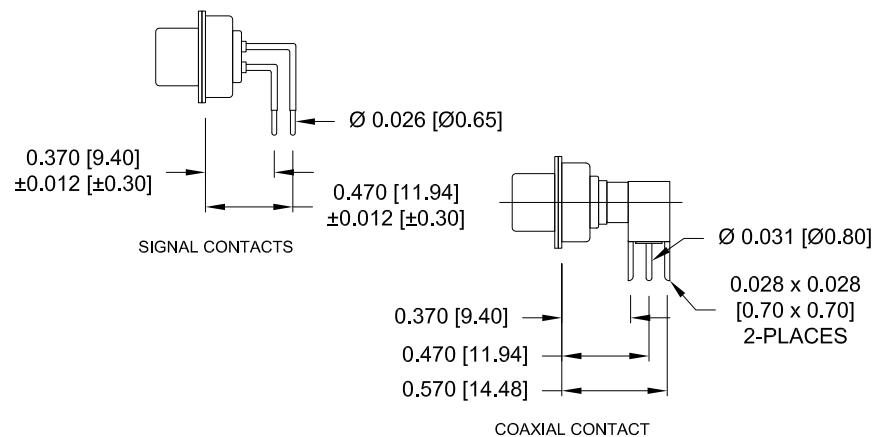
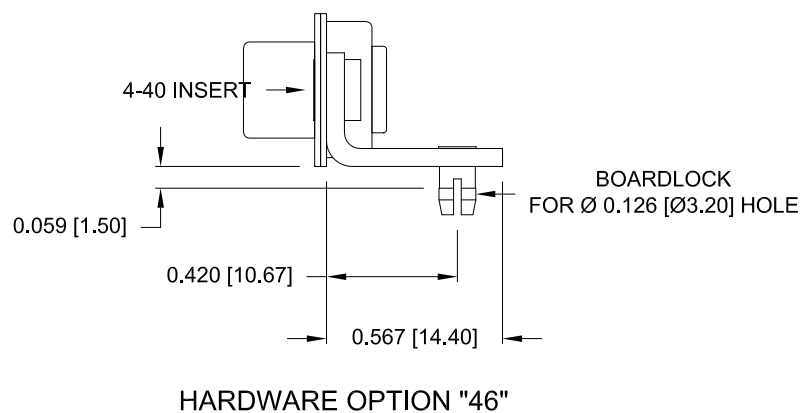
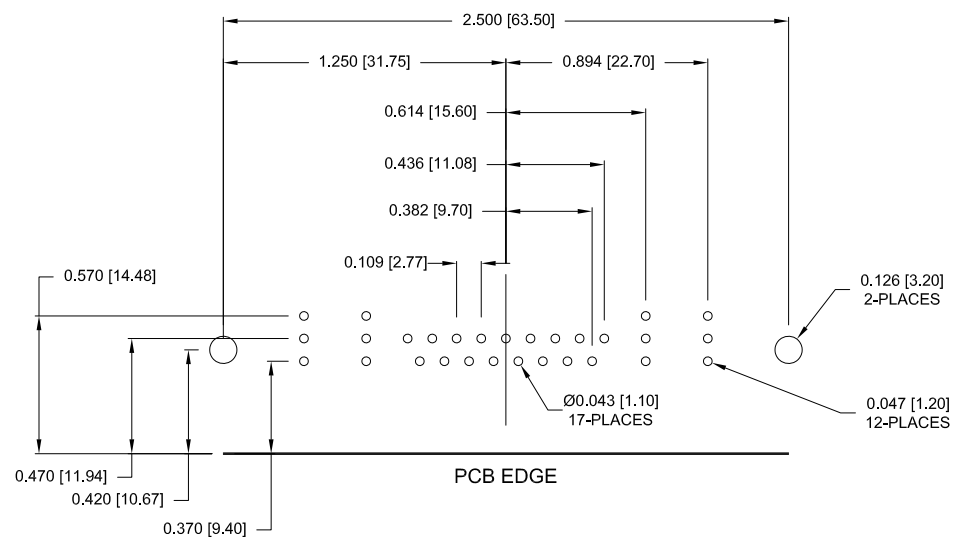
UNITS = INCHES [MM] DO NOT SCALE FROM DRAWING

# NorComp

SCALE: NTS	SHEET 1	OF 2	REV 2
DWG NO:	685M21WA4PL461		

DESCRIPTION: 21WA4 // M // COAXIAL // RA PCB MOUNT

NOTE:  
COAXIAL CONTACTS COME  
PRE-LOADED INTO INSULATORS



RoHS COMPLIANT



THESE DRAWINGS AND SPECIFICATIONS ARE THE PROPERTY OF NorComp AND SHALL NOT BE REPRODUCED, COPIED OR USED AS THE BASIS FOR THE MANUFACTURE OR SALE OF APPARATUS WITHOUT WRITTEN PERMISSION.

DRAWN:  
M. SIGMON  
DATE:  
02/27/2015

UNITS = INCHES [MM]

DO NOT SCALE FROM DRAWING

NorComp

SCALE:  
NTS

SHEET  
2 OF  
2

REV  
2

DWG NO:  
685M21WA4PL461

# Mouser Electronics

Authorized Distributor

Click to View Pricing, Inventory, Delivery & Lifecycle Information:

[NorComp:](#)

[685M21WA4PL461](#)