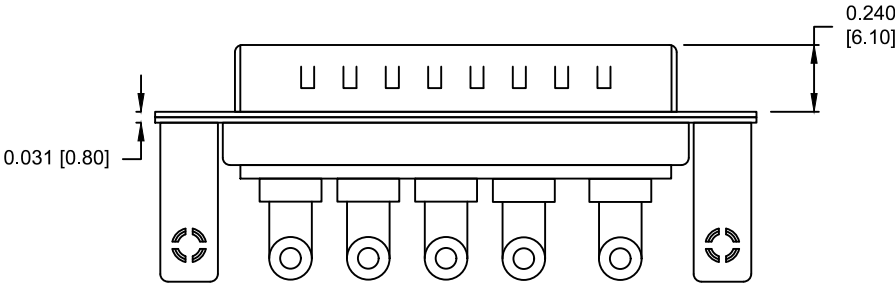
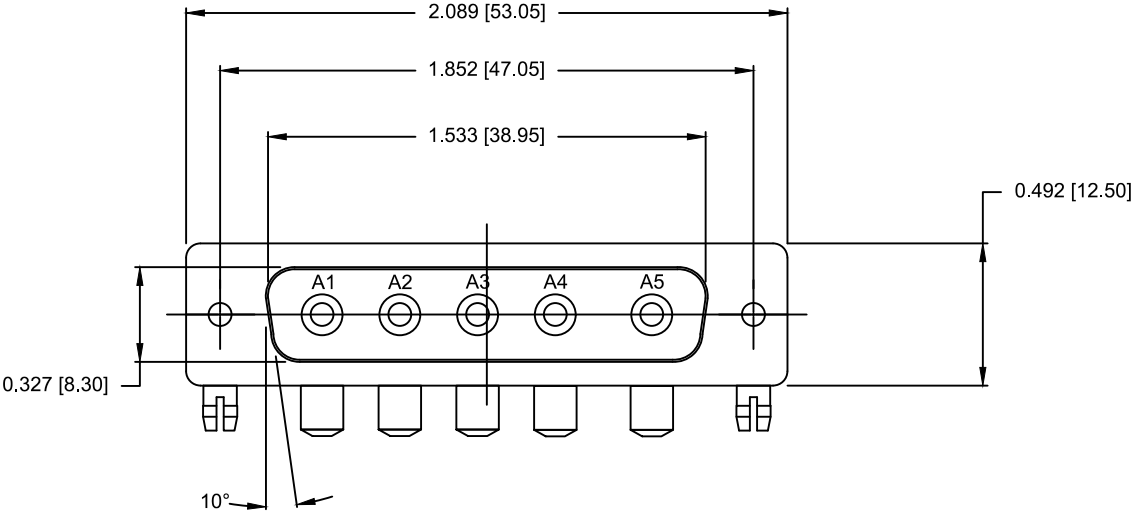


SPECIFICATIONS:

| | |
|---------------------------|--------------------------|
| ELECTRICAL: | |
| INSULATOR RESISTANCE: | 5 GΩ MIN. |
| WORKING VOLTAGE: | 250V |
| OPERATING TEMPERATURE: | -55°C TO +125°C |
| POWER CONTACT RESISTANCE: | 1.0 mΩ MAX. |
| POWER CONTACT AMPERAGE: | SEE P/N KEY |
| MECHANICAL: | |
| CONTACT INSERTION FORCE: | 4.5 Kg MAX. |
| CONTACT SEPARATION FORCE: | 0.3 Kg MIN. |
| MATERIALS: | |
| CONTACTS: | COPPER ALLOY, GOLD FLASH |
| INSULATOR: | PBT UL94V-0 RATED |
| | 230°C PROCESS TEMP. |
| SHELL: | NICKEL PLATED STEEL |
| BRACKET: | NICKEL PLATED STEEL |
| BOARD LOCK: | NICKEL PLATED BRASS |



SEE SHEET 2
FOR CONTACT & BRACKET DIMENSION DETAILS

684M5W5103LYYY

46 = 40 AMP POWER // #4-40 BRACKET // STANDARD PCB TAILS
62 = 40 AMP POWER // #4-40 BRACKET // 2.22mm PCB TAILS

1 = GOLD FLASH

RoHS COMPLIANT

UNITS = inches [mm] DO NOT SCALE FROM DRAWING

Mouser Electronics

Authorized Distributor

Click to View Pricing, Inventory, Delivery & Lifecycle Information:

[NorComp:](#)

[684M5W5103L461](#)