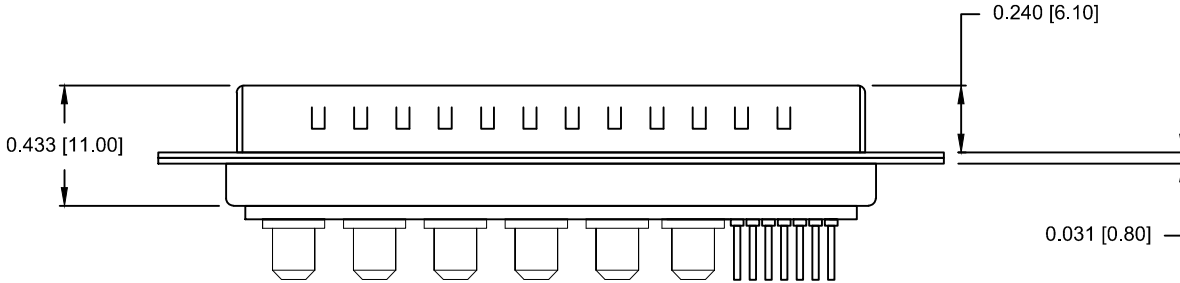
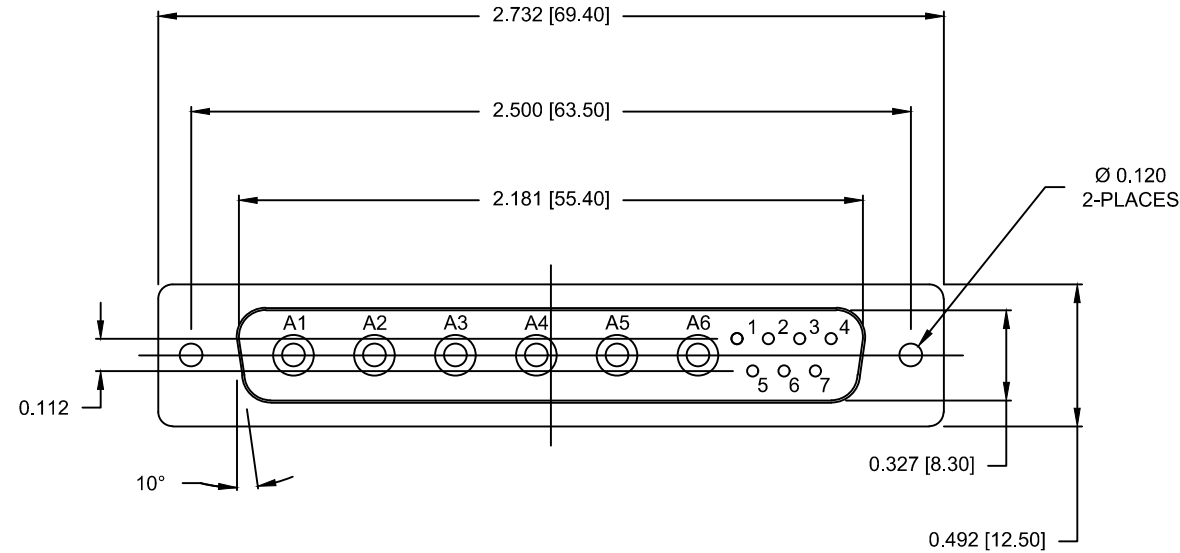


SPECIFICATIONS:

| | |
|----------------------------|--|
| ELECTRICAL: | |
| INSULATOR RESISTANCE: | 5 GΩ MIN. |
| WORKING VOLTAGE: | 250V |
| OPERATING TEMPERATURE: | -55°C TO +125°C |
| POWER CONTACT RESISTANCE: | 1.0 mΩ MAX. |
| SIGNAL CONTACT RESISTANCE: | 10 mΩ MAX. |
| POWER CONTACT AMPERAGE: | SEE P/N KEY |
| SIGNAL CONTACT AMPERAGE: | 5 AMPS |
| MECHANICAL: | |
| CONTACT INSERTION FORCE: | 4.5 Kg MAX. |
| CONTACT SEPARATION FORCE: | 0.3 Kg MIN. |
| MATERIALS: | |
| CONTACTS: | COPPER ALLOY, GOLD FLASH |
| INSULATOR: | PBT UL94V-0 RATED 230°C PROCESS TEMP. |
| SHELL: | NICKEL PLATED STEEL |
| BRACKET: | NICKEL PLATED STEEL |
| BOARD LOCK: | NICKEL PLATED BRASS |



SEE SHEET 2
FOR CONTACT DIMENSION DETAILS

681M13W6103LYYY

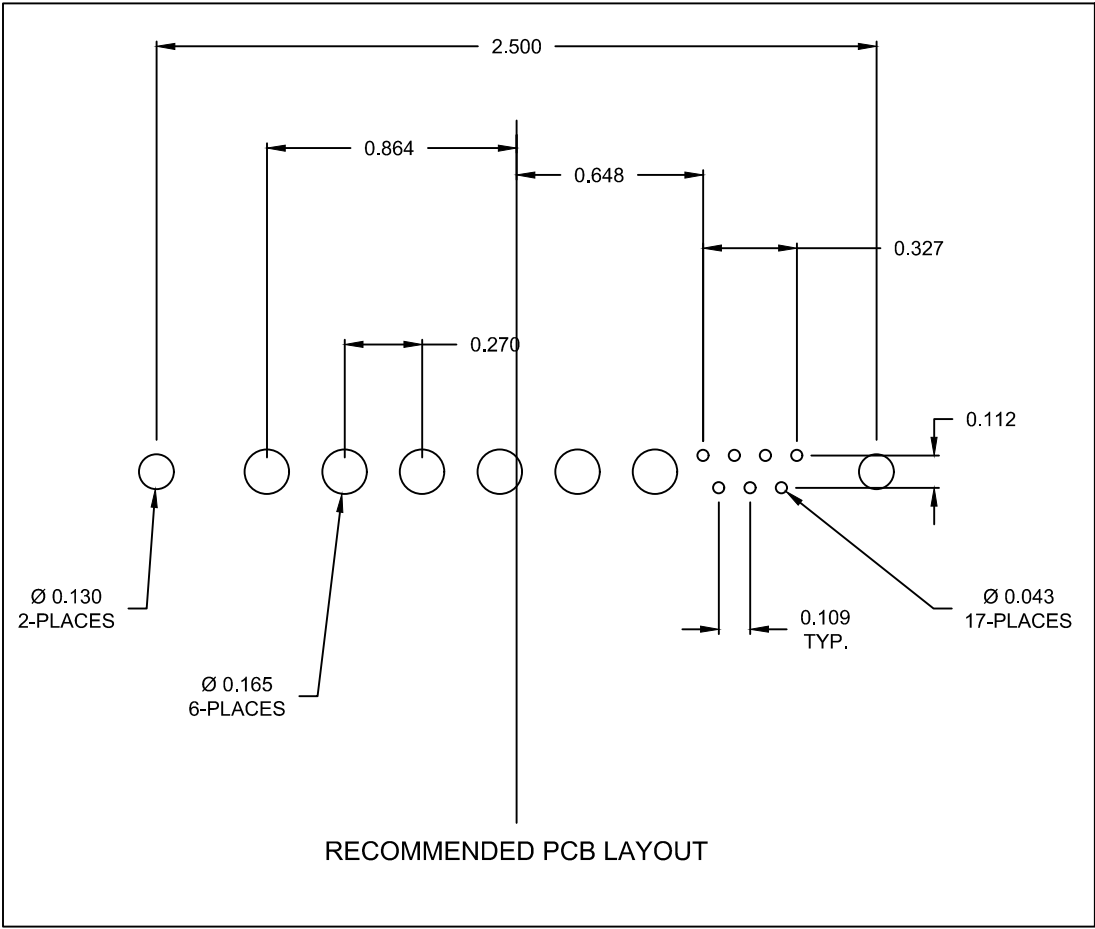
0 = 40 AMP POWER // STANDARD PCB TAILS
1 = 40 AMP POWER // 2.22mm PCB TAILS
2 = 20 AMP POWER // STANDARD PCB TAILS

0 = NO HARDWARE
1 = 0.098" CN PCB SIDE
2 = 0.236" CN PCB SIDE
3 = 0.236" CN MATING SIDE
4 = 0.237" BOARDLOCK PCB SIDE
5 = 0.224" BOARDLOCK PCB SIDE

1 = GOLD FLASH

RoHS COMPLIANT

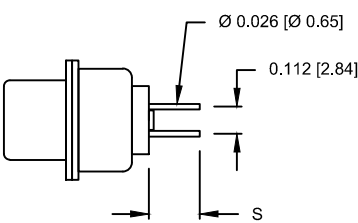
UNITS = inches [mm] DO NOT SCALE FROM DRAWING



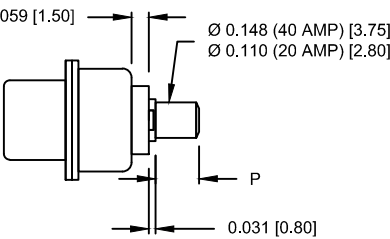
NOTE:
SIGNAL AND POWER CONTACTS
COME PRE-LOADED INTO INSULATORS

| DIMENSIONS(in/mm) | | |
|-------------------|-------|-------|
| OPTION | S | P |
| 0 & 2 | 0.218 | 0.177 |
| | 5.55 | 4.50 |
| 1 | 0.118 | 0.087 |
| | 3.02 | 2.22 |

SIGNAL CONTACTS



POWER CONTACTS



RoHS COMPLIANT

UNITS = inches [mm]

DO NOT SCALE FROM DRAWING



THESE DRAWINGS AND SPECIFICATIONS ARE THE PROPERTY OF NorComp AND SHALL NOT BE REPRODUCED, COPIED OR USED AS THE BASIS FOR THE MANUFACTURE OR SALE OF APPARATUS WITHOUT WRITTEN PERMISSION.

DRAWN:
M. SIGMON

DATE:
07/19/2013

NorComp

SCALE:
NTS

SHEET 2 OF 3

REV 2

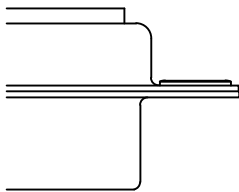
DWG NO.

681M13W6103LYYY

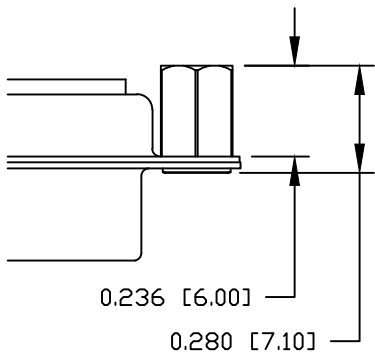
ALL CLINCH-NUTS ARE 4-40 INTERNAL THREADS

TOLERANCE:
ALL DIMENSIONS ARE ±0.010

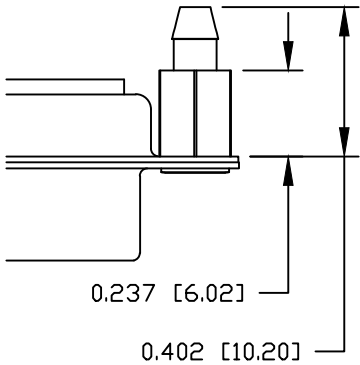
0 NO HARDWARE



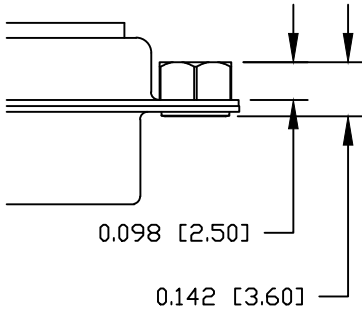
2 0.236" PCB SIDE



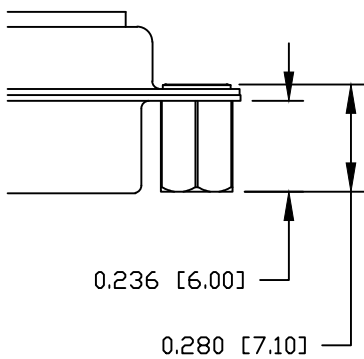
4 0.237" PCB SIDE



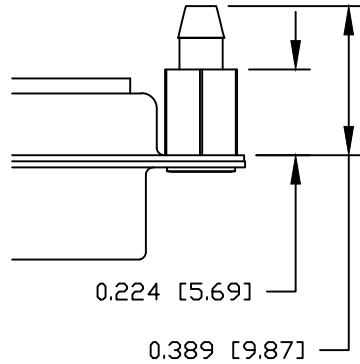
1 0.098" PCB SIDE



3 0.236" MATING SIDE



5 0.224" PCB SIDE



RoHS COMPLIANT

UNITS = inches [mm]

DO NOT SCALE FROM DRAWING



THESE DRAWINGS AND SPECIFICATIONS ARE THE PROPERTY OF NorComp AND SHALL NOT BE REPRODUCED, COPIED OR USED AS THE BASIS FOR THE MANUFACTURE OR SALE OF APPARATUS WITHOUT WRITTEN PERMISSION.

DRAWN:
M. SIGMON

DATE:
07/19/2013

NorComp

SCALE:
NTS

SHEET OF
3 3

REV
2

DWG NO. 681M13W6103LYYY

Mouser Electronics

Authorized Distributor

Click to View Pricing, Inventory, Delivery & Lifecycle Information:

NorComp:

681M13W6103L001