

SPECIFICATIONS:

ELECTRICAL:

INSULATOR RESISTANCE:	5 G OHMS Min.
DIELECTRIC WITHSTANDING:	1,000VAC r.m.s.
OPERATING TEMPERATURE:	-55° C ~ +125° C
POWER CONTACT RESISTANCE:	1.0 mOHMS Max.
SIGNAL CONTACT RESISTANCE:	2.7 mOHMS Max.
POWER PINS:	SEE PART NUMBER BELOW
SIGNAL PINS:	5 AMPS

MECHANICAL:

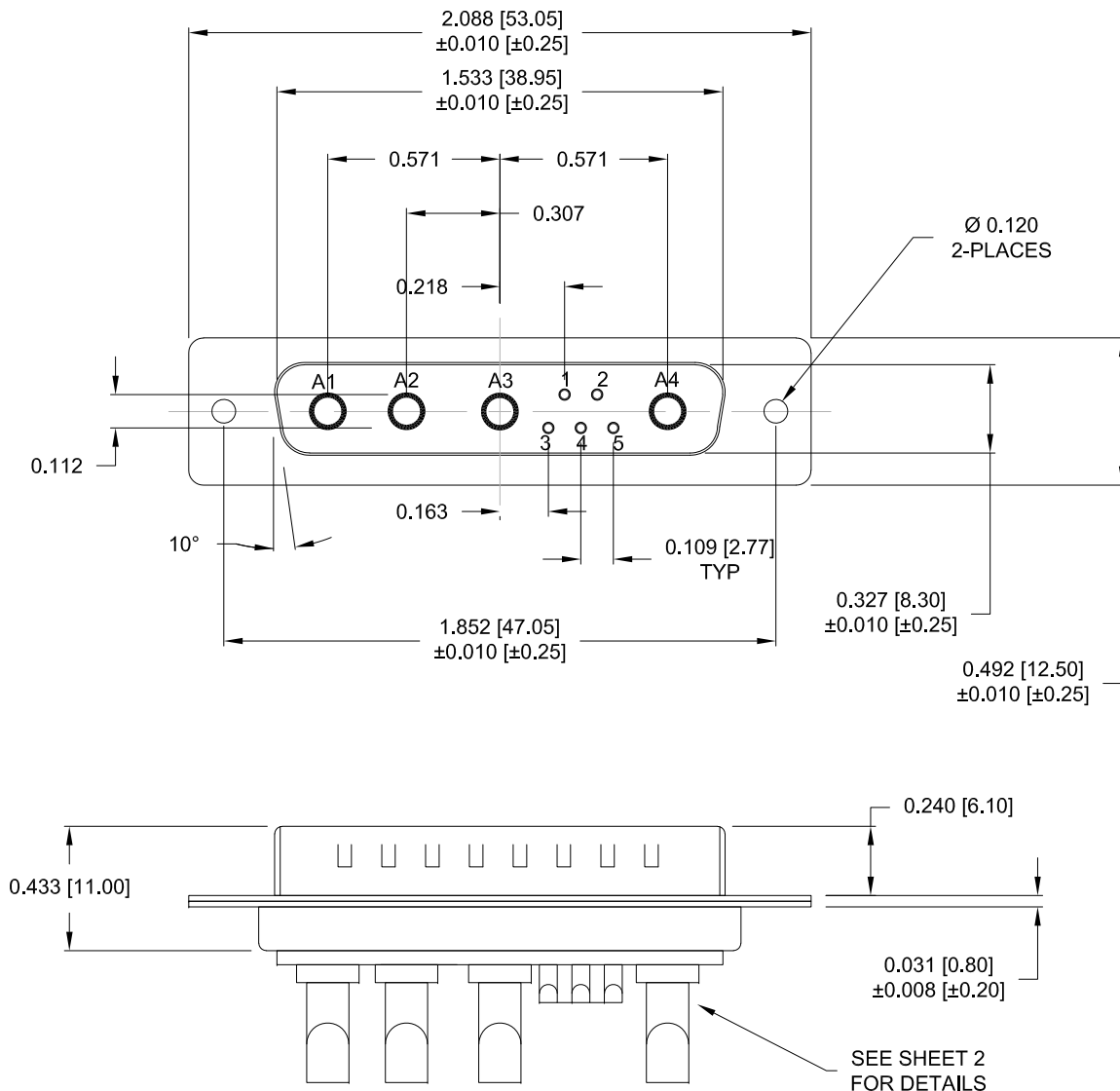
CONTACT INSERTION FORCE:	4.5 Kg Max.
CONTACT SEPARATOR FORCE:	0.3Kg Min.

MATERIALS:

CONTACTS:	COPPER ALLOY
INSULATOR:	PBT UL94V-0 RATED, BLK
	230°C PROCESS TEMP.
SHELL:	STEEL

FINISH:

SHELL:	NICKEL
CONTACTS:	FULL GOLD FLASH



680M9W4103L YY1

2 = 20 AMP

4 = 40 AMP

0 = NO HARDWARE

1 = 0.098" CN SOLDER SIDE

2 = 0.236" CN SOLDER SIDE

3 = 0.236" CN MATING SIDE

1 = GOLD FLASH

2 = 30u" GOLD

*CONTACT NORCOMP FOR MORE OPTIONS

RoHS COMPLIANT

UNITS = inch [mm]

DO NOT SCALE FROM DRAWING



THESE DRAWINGS AND SPECIFICATIONS ARE THE PROPERTY OF NorComp AND SHALL NOT BE REPRODUCED, COPIED OR USED AS THE BASIS FOR THE MANUFACTURE OR SALE OF APPARATUS WITHOUT WRITTEN PERMISSION.

DRAWN:

M. SIGMON

DATE:

07/22/2013

NorComp

SCALE:

NTS

SHEET

OF

1

2

REV

4

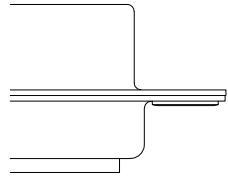
DWG NO.

680M9W4103L YY1

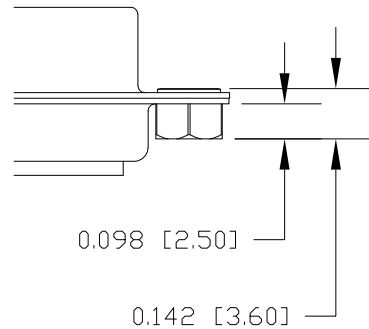
HARDWARE OPTIONS

CLINCH NUTS HAVE #4-40 INTERNAL THREADS THRU

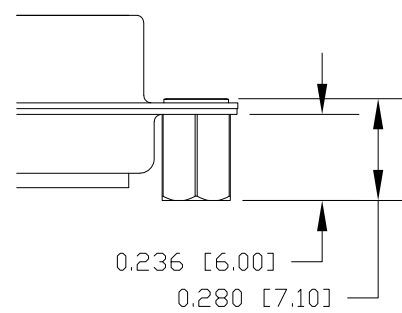
0 NO HARDWARE



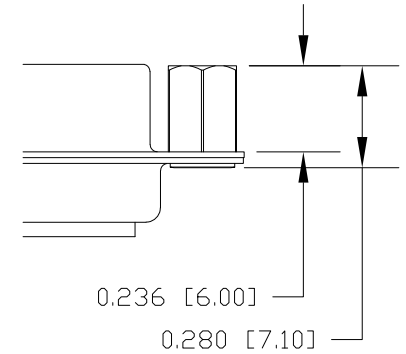
1 0.098" SOLDER SIDE



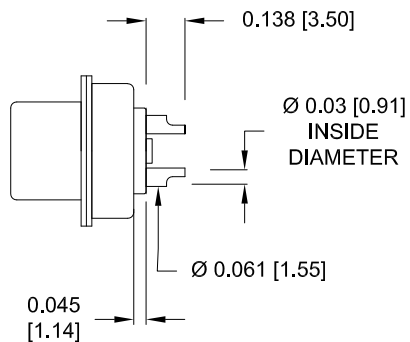
2 0.236" SOLDER SIDE



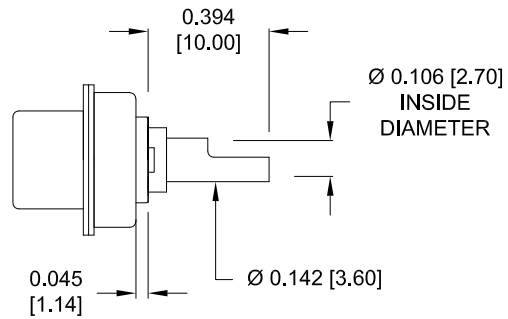
3 0.236" MATING SIDE



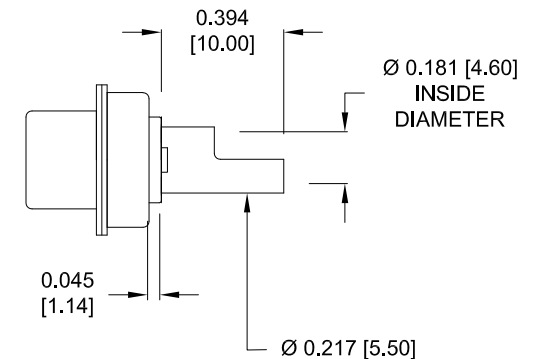
NOTE:
SIGNAL AND POWER CONTACTS
COME PRE-LOADED INTO INSULATORS



SIGNAL CONTACTS
ACCEPTS UP TO 20 AWG WIRE



20 AMP POWER CONTACTS
ACCEPTS UP TO 12 AWG WIRE



40 AMP POWER CONTACTS
ACCEPTS UP TO 8 AWG WIRE

RoHS COMPLIANT

UNITS = inch [mm]

DO NOT SCALE FROM DRAWING



THESE DRAWINGS AND SPECIFICATIONS ARE THE PROPERTY OF NorComp AND SHALL NOT BE REPRODUCED, COPIED OR USED AS THE BASIS FOR THE MANUFACTURE OR SALE OF APPARATUS WITHOUT WRITTEN PERMISSION.

DRAWN:
M. SIGMONDATE:
07/22/2013

NorComp

SCALE:
NTS

SHEET 2 OF 2

REV
4

DWG NO.

680M9W4103L YY1

Mouser Electronics

Authorized Distributor

Click to View Pricing, Inventory, Delivery & Lifecycle Information:

NorComp:

[680M9W4103L201](#) [680M9W4103L401](#)