

DESCRIPTION: MACHINED MICRO-D // SOLDER CUP // FEMALE

SPECIFICATIONS:

MATERIALS:

INSULATOR: LCP, UL94 V-0, BLACK
CONTACTS: 15µ" GOLD PLATED BRASS
SHELL: NICKEL PLATED ZINC ALLOY 60µ"-100µ"

ELECTRICAL:

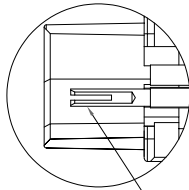
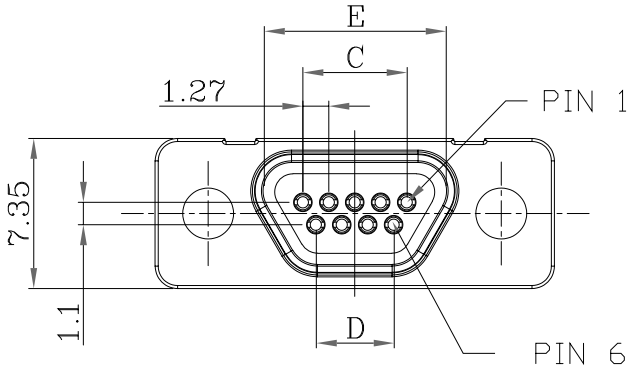
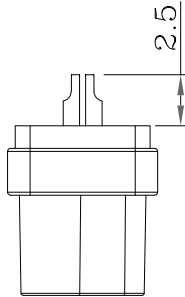
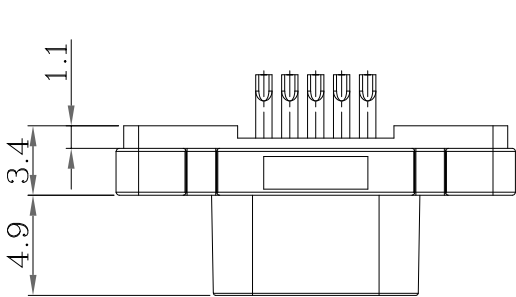
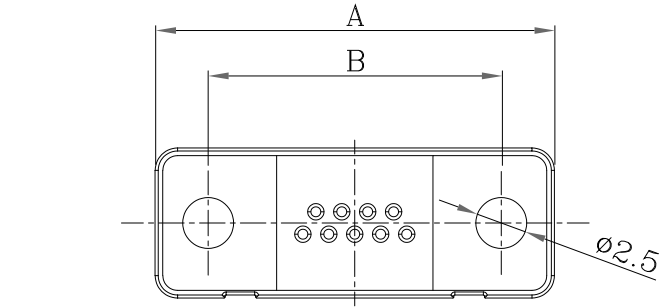
RATED CURRENT: 2A
RATED VOLTAGE: 60VDC
D.W.V.: 630 VAC for 1 min.
INSULATION RESISTANCE: 1000 MOhms MIN.
CONTACT RESISTANCE: 30 mOhms MAX.

ENVIRONMENT:

OPERATING TEMPERATURE: -40°C TO +125°C
PROCESS TEMPERATURE: 260°C

WIRE AWG: 28 AWG MAX RECOMMENDED
26 AWG NEEDS TO BE TESTED FOR FIT

*NOT DESIGNED TO MATE WITH NORCOMP 380 // 381 // 960 SERIES & NORCOMP MICRO-D CABLE ASSEMBLIES USING THE 960 SERIES CONNECTORS.
**DESIGNED TO MATE WITHIN NORCOMP 58Y-M SERIES MICRO-D CONNECTORS



EXPOSED
TULIP
CONTACT

DIMENSIONS(mm)

SIZE	A	B	C	D	E
9	19.55	14.35	5.08	3.81	8.70
15	23.36	18.20	8.89	7.62	12.40
25	29.70	24.55	15.24	13.97	19.00

580-MYY-203L001

SERIES
580 = MACHINED MICRO-D

MACHINED

POSITIONS
09
15
25

GENDER
2 = FEMALE - "TULIP" CONTACTS

SOLDER CUP TERMINATION

CONTACT PLATING OPTIONS
1 = 15µ" GOLD PLATING
2 = 30µ" GOLD PLATING

RoHS COMPLIANT



THESE DRAWINGS AND SPECIFICATIONS ARE THE PROPERTY OF NorComp AND SHALL NOT BE REPRODUCED, COPIED OR USED AS THE BASIS FOR THE MANUFACTURE OR SALE OF APPARATUS WITHOUT WRITTEN PERMISSION.

DRAWN:
J. KADEL

DATE:
05/12/2020

TOLERANCES
.X ±0.20
.XX ±0.10
.XXX ±0.05
.XXXX ±0.03
ANGULAR ±1°

UNITS = mm

NorComp

DO NOT SCALE FROM DRAWING

SCALE:
NTS

SHEET OF
1 1

REV
10

DWG NO.

580-MYY-203L001

Mouser Electronics

Authorized Distributor

Click to View Pricing, Inventory, Delivery & Lifecycle Information:

[NorComp:](#)

[580-M09-203L001](#) [580-M09-203L002](#) [580-M15-203L001](#) [580-M15-203L002](#) [580-M25-203L001](#) [580-M25-203L002](#)