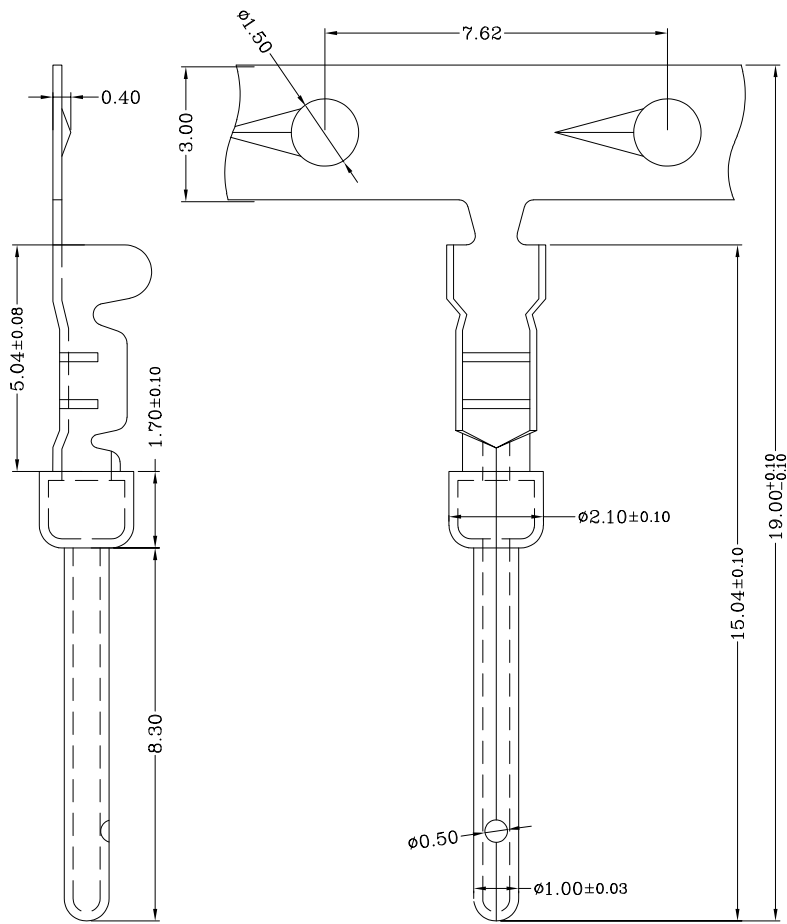


SPECIFICATIONS:

MATERIALS:	
CONTACT:	BRASS
PLATING:	SEE P/N TABLE BELOW
AMPERAGE:	5A MAX



PART NUMBER	PLATING	WIRE AWG RANGE
170-001-170L001	GOLD FLASH ON MATING AREA // NICKEL ON WIRE CRIMP AREA	20-28 AWG
170-001-170L002	10µ" GOLD OVER 50µ" NICKEL ENTIRE CONTACT	20-28 AWG
170-001-170L003	30µ" GOLD OVER 100µ" NICKEL ENTIRE CONTACT	20-28 AWG

NOTE: CONTACTS SUPPLIED ON 10,000/pc REEL

NORCOMP CRIMP TOOL PART NUMBER => 170-701-170-000

RoHS COMPLIANT



THESE DRAWINGS AND SPECIFICATIONS ARE THE PROPERTY OF NorComp AND SHALL NOT BE REPRODUCED, COPIED OR USED AS THE BASIS FOR THE MANUFACTURE OR SALE OF APPARATUS WITHOUT WRITTEN PERMISSION.

DRAWN:
P. JENKINS

DATE:
07/25/2005

UNITS = mm

DO NOT SCALE FROM DRAWING

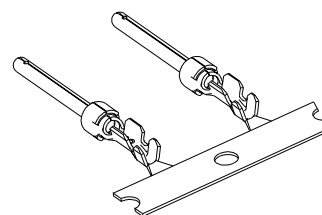
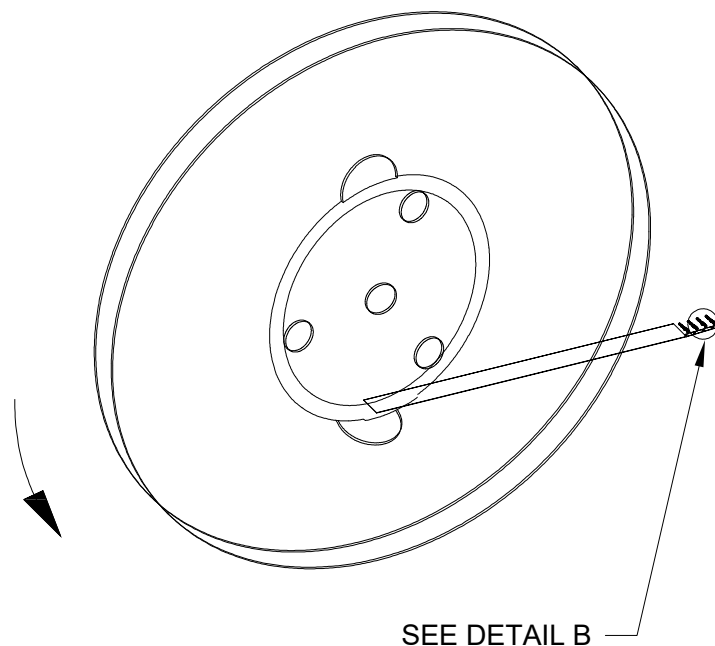
NorComp

SCALE:
NTS

SHEET 1 OF 2

REV 6

DWG NO. 170-001-170L00Y



DETAIL B

RoHS COMPLIANT

DO NOT SCALE FROM DRAWING



THESE DRAWINGS AND SPECIFICATIONS ARE THE PROPERTY OF NorComp AND SHALL NOT BE REPRODUCED, COPIED OR USED AS THE BASIS FOR THE MANUFACTURE OR SALE OF APPARATUS WITHOUT WRITTEN PERMISSION.

DRAWN:
P. JENKINS
DATE:
07/25/2005

NorComp

SCALE:
NTS

SHEET 2 OF 2

REV 6

DWG NO. 170-001-170L00Y

Mouser Electronics

Authorized Distributor

Click to View Pricing, Inventory, Delivery & Lifecycle Information:

[NorComp:](#)

[170-001-170L001](#) [170-001-170L002](#) [170-001-170L003](#)