

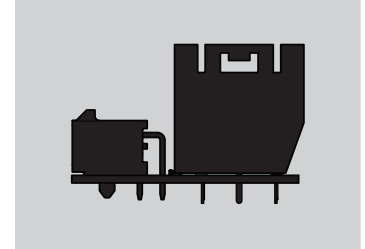
DISTINCTIVE CHARACTERISTICS

Compact, Convenient, Dynamic

NKK's new easy installation Panel Mount Assembly consists of PC board, resistor, connector, and straight PC adaptor, and is ready to connect with a single pole YB2 switch (available separately). Custom assemblies are available for the double pole models in YB2, as well as for other switch types with pushbutton, toggle and rocker actuators. Contact NKK Switches for more information on solution board services and support.

- Simplifies PC installation of switch board
Facilitates drop-in HMI functionality by joining with the connector – HMI is ready for operation
Compact size PC board: Width 18.29mm (.720") x Length 29.97mm (1.180")
- Economical: Eliminates need to create new design; easy maintenance. Switch inserts directly into built-in PC adaptor
- Efficient: solution board requires no terminal soldering – connect and ready to use

Actual Size

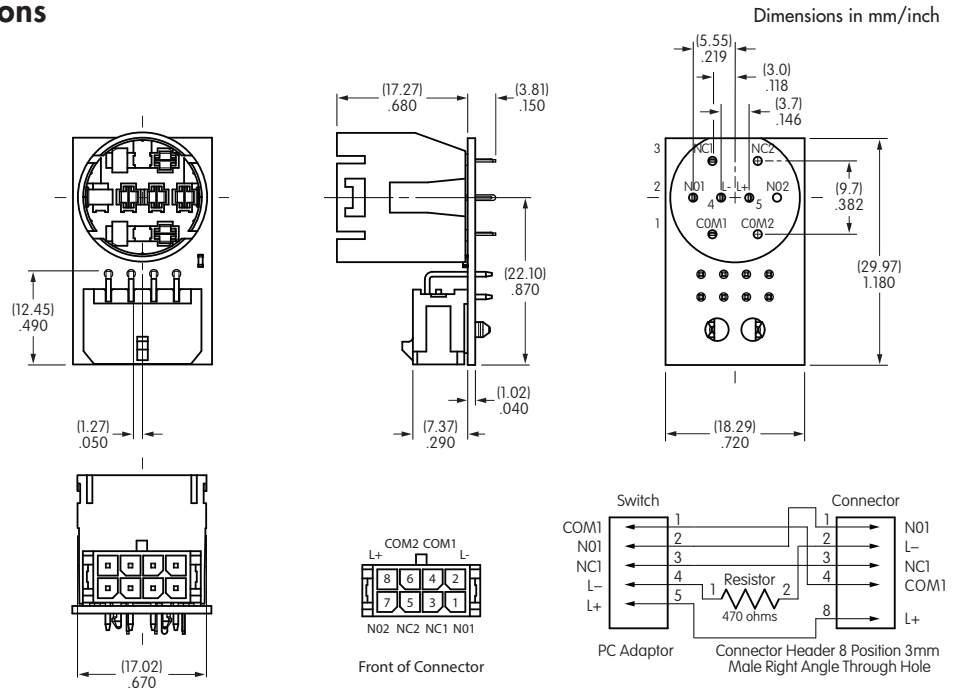


BYB201-470 Typical Dimensions

Panel Mount Assembly

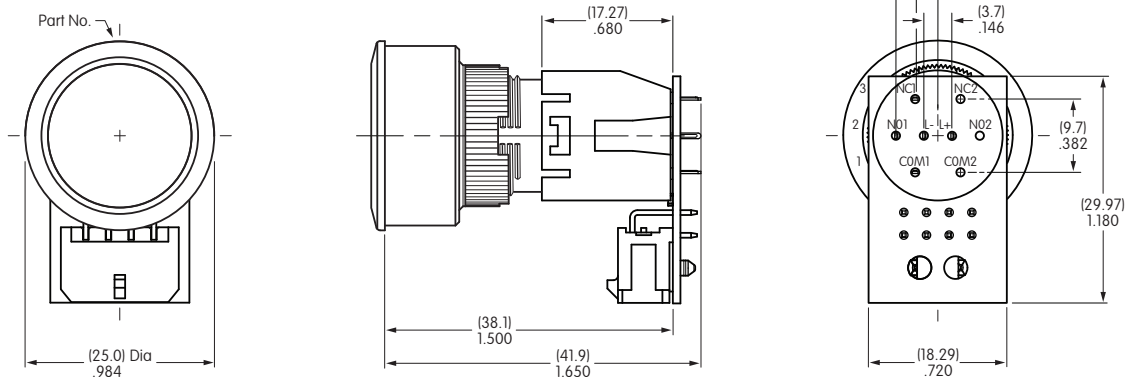


BYB201-470
Panel Mount Assembly



BYB201-470 & Switch Typical Dimensions

Panel Mount Assembly and YB2 Single Pole Pushbutton



Switch is sold separately from Panel Mount Assembly

PART NUMBER & DESCRIPTION

Standard Part Number	Components of Panel Mount Assembly
BYB201-470	<ul style="list-style-type: none"> PC Board: Width 18.29mm (.720") x Length 29.97mm (1.180") * Resistor 470 Ohms Right Angle Connector: 8 position 3.0mm (.118") Single Pole Straight PC Adaptor

* Contact NKK Switches if a different value of resistor is preferred.

GENERAL SPECIFICATIONS FOR SWITCH

The following specifications are for the panel seal pushbutton YB215CWCKW01/CUL-5C-CB (sold separately from the Panel Mount Assembly). For more information on this switch, including electrical specifications for the LED, see YB2 Illuminated Pushbuttons on NKK Switches' website.

Electrical Capacity (Resistive Load)

Power Level: 3A @ 125V AC or 3A @ 250V AC or 3A @ 30V DC

Other Ratings

Contact Resistance: 50 milliohms maximum
Insulation Resistance: 200 megohms minimum @ 500V DC
Dielectric Strength: 1,000V AC minimum between contacts for 1 minute minimum;
 1,500V AC minimum between contacts and case for 1 minute minimum
Mechanical Life: 1,000,000 operations minimum
Electrical Life: 100,000 operations minimum
Nominal Operating Force: 1.5N
Contact Timing: Nonshorting (break-before-make)
Travel: Pretravel .059" (1.5mm); Overtravel .059" (1.5mm); Total Travel .118" (3.0mm)

Materials & Finishes

Bezel: Black: Glass fiber reinforced polyamide (UL94V-0);
Housing: Glass fiber reinforced polyamide (UL94V-0)
Base: Glass fiber reinforced polyamide (UL94V-0)
Movable Contactor: Phosphor bronze with silver plating
Movable Contacts: Silver alloy or copper with gold plating
Stationary Contacts: Silver alloy or copper with gold plating
Switch Terminals: Phosphor bronze with tin plating
Lamp Terminals: Phosphor bronze with tin plating

Environmental Data

Operating Temperature Range: -25°C through +50°C (-13°F through +122°F)
Sealing: IP65 of IEC 60529 Standards

Standards & Certifications

Flammability Standards: UL94V-0 housing, base and black bezel
UL: File No. E44145. Recognized when ordered with marking on switch. cULus marking is on this model.

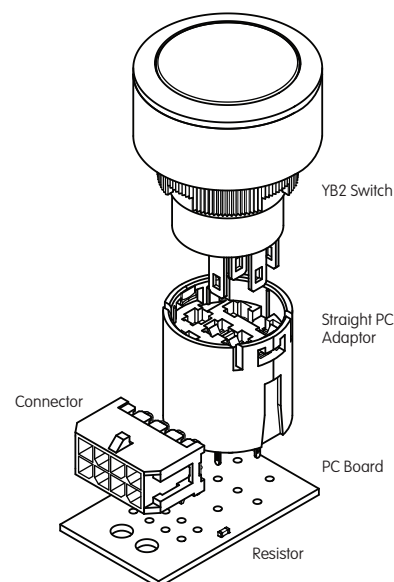
ASSEMBLY INSTRUCTIONS

Switch Installation & Orientation

The connector, resistor and PC adaptor come assembled on the PC board. This assembly was designed for the YB2 Series single pole pushbutton (available separately). The switch part number that is compatible with this assembly is YB215CWCKW01/CUL-5C-CB.

Holding the switch in one hand by the cap with its part number facing upward, and the assembly in the other hand with the adaptor on top, align the switch's solder lug/quick connect terminals with the inside of the PC adaptor and guide the terminals into the openings. When aligned properly, the switch will press into place.

Note: This Panel Mount Assembly is compatible with single pole models with solder lug/quick connect terminals from YB2 Series pushbuttons. The assembly can be customized for double pole models from YB2 Series, as well as for toggles, rockers and pushbuttons from other NKK Switches series. The Engineering Dept. is pleased to assist with any questions, support or custom value added solutions.



Mouser Electronics

Authorized Distributor

Click to View Pricing, Inventory, Delivery & Lifecycle Information:

[NKK Switches:](#)

[BYB201-470](#)