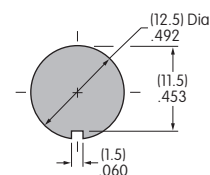
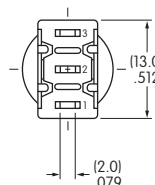
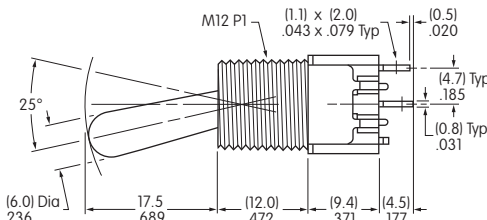
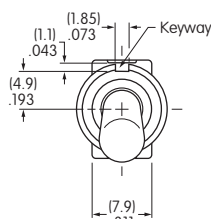


M2011VA001

Bushing Mount • Single Pole • Solder Lug

Dimensions in mm/inch

PANEL CUTOUT



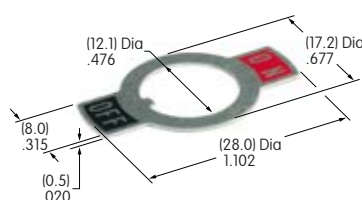
Panel Thickness:
.216" (5.5mm) Maximum

BASE SWITCH

ON-OFF PLATE

AT214 ON-OFF Plate

Part Number
M2011B2B1W01



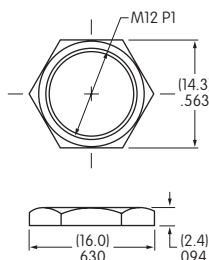
Colors: Red & black ink
Material: Aluminum

Installation Instructions

1. Assemble the AT527M nut onto the switch's bushing.
2. Place the AT508 lockwasher onto the bushing.
3. Insert the switch bushing with hardware from back of the panel into the cutout hole.
4. Place the ON-OFF plate onto the bushing, aligning the plate's notch with the keyway.
5. Assemble the AT503M nut onto the bushing to complete.

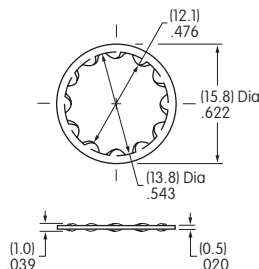
STANDARD HARDWARE

AT503M Hexagon Face Nut



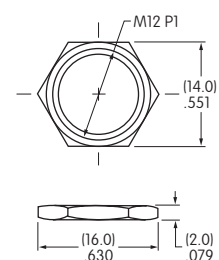
1 included with each switch
Material: Brass with chrome plating

AT508 Internal Tooth Lockwasher



1 included with each switch
Material: Steel with zinc/chromate

AT527M Hexagon Mounting Nut



1 included with each switch
Material: Steel with nickel plating

POLE & CIRCUIT

		Toggle Position () = Momentary			Connected Terminals			Throw & Schematics
Pole	Model	Down Keyway	Center	Up	Down Keyway	Center	Up	Note: Terminal numbers are not actually on the switch.
SP	M2011	ON	NONE	OFF	2-3	OPEN	OPEN	



CONTACT MATERIALS & RATINGS

Silver over Silver

Power Level

6A @ 125V AC & 3A @ 250V AC

Base Switch Specifications

Electrical Capacity (Resistive Load)

Power Level: 6A @ 125V AC & 3A @ 250V AC; 4A @ 30V DC


Other Ratings

Contact Resistance: 10 milliohms maximum
Insulation Resistance: 1,000 megohms minimum @ 500V DC
Dielectric Strength: 1,000V AC minimum between contacts for 1 minute minimum;
1,500V AC minimum between contacts and case for 1 minute minimum
Mechanical Life: 100,000 operations minimum
Electrical Life: 25,000 operations minimum
50,000 operations minimum at 3A @ 125V AC
Angle of Throw: 25°

Materials & Finishes

Toggle: Brass with chrome plating
Frame: Stainless steel
Bushing: Brass with nickel plating
Support Bracket: Brass with tin plating
Case: Diallyl phthalate resin (UL94V-0)
Movable Contactor: Phosphor bronze with silver plating
Movable Contacts: Silver alloy
Stationary Contacts: Silver with silver plating
Terminals: Copper or brass with silver plating

Environmental Data

Operating Temp Range: -30°C through +85°C (-22°F through +185°F)
Humidity: 90 ~ 95% humidity for 96 hours @ 40°C (104°F)
Vibration: 10 ~ 55Hz with peak-to-peak amplitude of 1.5mm traversing the frequency range & returning in 1 minute; 3 right angled directions for 2 hours
Shock: 50G (490m/s²) acceleration (tested in 6 right angled directions, with 5 shocks in each direction)
RoHS Compliant: 

Installation

Mounting Torque: 3.0Nm (26.55 lb•in)

Processing

Soldering: Manual Soldering: 350°C for 3 seconds maximum, 1 cycle
Note: Lever must be in OFF (center) position while soldering.
Cleaning: These devices are not process sealed. Hand clean locally using alcohol based solution.

Standards & Certifications

Flammability Standards: UL94V-0 for case

Mouser Electronics

Authorized Distributor

Click to View Pricing, Inventory, Delivery & Lifecycle Information:

[NKK Switches:](#)

[M2011VA001](#)