

Change Notice

IS Series

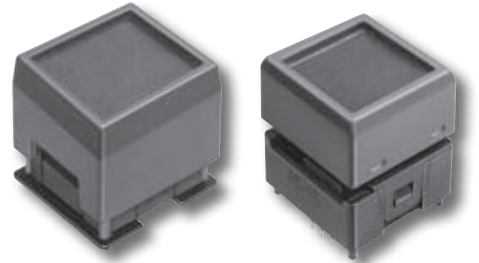
Discontinuation of IS Part Numbers & Replaced with Wide View Models

Type of Change:

- Engineering Part Number
- Product Appearance

Some of the IS Series part numbers will be discontinued and replaced with alternate part numbers. These include all of the LCD standard 64 x 32 and 36 x 24 Pushbuttons and Displays. The alternate part numbers feature wider viewing areas. The tables below show the effected part numbers and the alternate IS models.

Alternate Wide View IS Switches



IS15EBFP4RGB

IS15ESBFP4RGB

	Discontinued IS PNs	Alternate IS PNs
Switches	IS15DBFP4RGB	IS15EBFP4RGB
	IS15DBFP4RGB-09YN	IS15EBFP4RGB-09YN
	IS15DSBFP4RGB	IS15ESBFP4RGB
	IS15ABFP4RGB	IS15BBFP4RGB
	IS15AACP4CF	IS15BAFP4CF
	IS15SBFP4RGB	IS15BSBFP4RGB
	IS15SACP4CF	IS15BSAFP4CF
	IS15SBCP4CF	IS15BSBFP4RGB
	IS15SBCP4EF	IS15BSBFPP4EF

	Discontinued IS PNs	Alternate IS PNs
Switches	* IS15ABCP4CF	IS15BAFP4CF IS15BBFP4RGB
	* IS15ABCP4E	IS15BBFP4RGB
	* IS15ABCP4EF	IS15BBFP4RGB
	* IS15ABFP4B	IS15BBFP4RGB
	* IS15SBFP4B	IS15BSBFP4RGB
	* IS15ABDP4E	N/A
	* IS15ABDP4EG	N/A
	* IS15ABDP4B	N/A

	Discontinued IS PNs	Alternate IS PNs
Displays	IS01DBFRGB	IS01EBFRGB
	IS01BFRGB	IS01BBFRGB
	IS01BCCF	IS01BBFRGB
	IS01BCE	IS01BBFEF
	IS01BCEF	IS01BBFEF

* These IS Part Numbers do not have a direct alternate. The recommended Alternate PNs may require a change to the PCB layout, resistors or firmware. Call NKK Switches for more details or assistance.

Note:

The IS wide view models were introduced in Contact 219, June 2013.

Effective Date

The discontinued IS Series Part Numbers will be available until March 31, 2015.



SWITCHES

<http://www.nkkswitches.com> • 1.877.2BUYNKK (228.9655)

7850 East Gelding Drive • Scottsdale, AZ 85260 • Telephone 480.991.0942 • Fax 480.998.1435

Mouser Electronics

Authorized Distributor

Click to View Pricing, Inventory, Delivery & Lifecycle Information:

[NKK Switches:](#)

[IS15DBFP4RGB](#)