

## Designated client product

This product will be discontinued its production in the near term.  
And it is provided for customers currently in use only, with a time limit.  
It can not be available for your new project. Please select other new or existing products.

For more information, please contact our sales office in your region.

New Japan Radio Co.,Ltd.

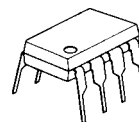
[www.njr.com](http://www.njr.com)

## VOLTAGE COMPARATOR

### ■ GENERAL DESCRIPTION

The NJM311 is a voltage comparator that has low input currents. It is also designed to operate covering a wider range of supply voltages from Standard  $\pm 15\text{V}$  op amp supplies down to the single 5V supply used for IC logic. Its output is compatible with RTL, DTL and TTL as well as MOS circuits. Furthermore, it can drive lamps or relays, switching voltages up to 40V at currents as high as 50mA. Offset balancing is provided, and the outputs can be OR wired.

### ■ PACKAGE OUTLINE



NJM311D

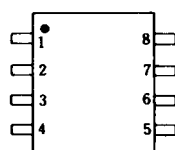


NJM311M

### ■ FEATURES

- Operating Voltage ( +5V~+36V )
- Single Supply Operation
- Single Circuit
- With  $V_{IO}$  Trim Terminal
- Response Time ( 200ns typ. )
- Package Outline DIP8, DMP8
- Bipolar Technology

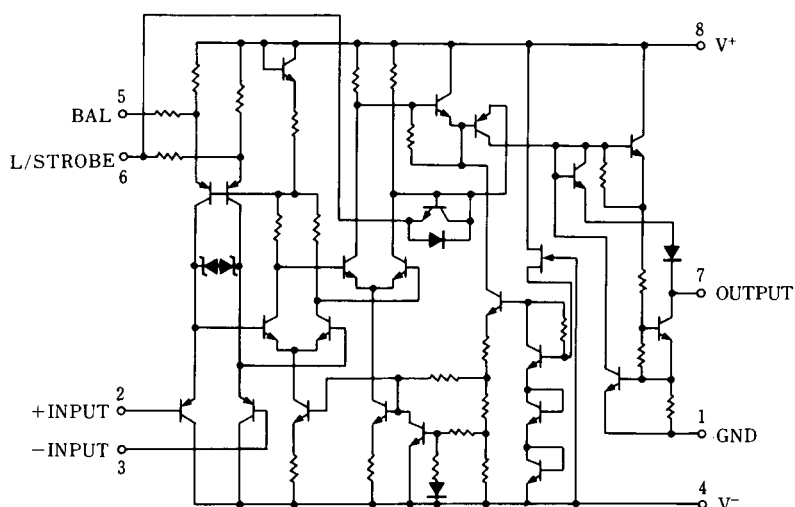
### ■ PIN CONFIGURATION

NJM311D  
NJM311M

#### PIN FUNCTION

1. GND
2. +INPUT
3. -INPUT
4.  $V^-$
5. BAL
6. BAL/STROBE
7. OUTPUT
8.  $V^+$

### ■ EQUIVALENT CIRCUIT



# NJM311

## ■ ABSOLUTE MAXIMUM RATINGS

( Ta=25°C )

PARAMETER	SYMBOL	RATINGS	UNIT
Supply Voltage	$V^+/V^-$	36 (± 18)	V
Output to Negative Supply Voltage	$V_{7-4}$	40	V
Ground to Negative Supply Voltage	$V_{1-4}$	30	V
Differential Input Voltage	$V_{ID}$	± 30	V
Input Voltage	$V_{IN}$	± 15 ( note1 )	V
Power Dissipation	$P_D$	( DIP8 ) 500 ( DMP8 ) 300	mW
Operating Temperature Range	$T_{opr}$	-40~+85	°C
Storage Temperature Range	$T_{stg}$	-40~+125	°C

( note1 ) For supply voltage less than ±15V, the absolute input voltage is equal to the supply voltage.

## ■ ELECTRICAL CHARACTERISTICS

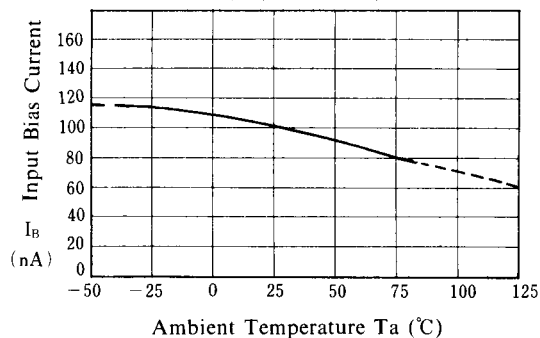
(  $V^+/V^-$ =±15V, Ta=25°C )

PARAMETER	SYMBOL	TEST CONDITION	MIN.	TYP.	MAX.	UNIT
Input Offset Voltage	$V_{IO}$	$R_S \leq 50k\Omega$	-	2.0	7.5	mV
Input Offset Current	$I_{IO}$		-	6.0	50	nA
Input Bias Current	$I_B$		-	100	250	nA
Voltage Gain	$A_V$		-	106	-	dB
Response Time	$t_R$		-	200	-	ns
Saturation Voltage	$V_{SAT}$	$V_{IN} \leq 10mV, I_O = 50mA$	-	0.75	1.5	V
Strobe ON Current	$I_{STR}$		-	3.0	-	mA
Output Leakage Current	$I_{LEAK}$	$V_{IN} \geq 10mV, I_O = 35V$	-	0.2	50	nA
Input Common Mode Voltage Range	$V_{ICM}$		-	± 14	-	V
Positive Quiescent Current	$I^+$		-	5.1	7.5	mA
Negative Quiescent Current	$I^-$		-	4.1	5.0	mA

## ■ TYPICAL CHARACTERISTICS

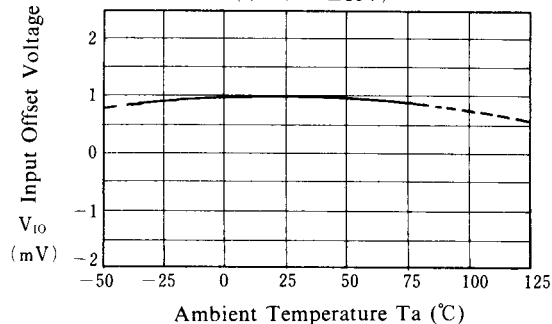
**Input Bias Current vs. Temperature**

( $V^+/V^- = \pm 15V$ )



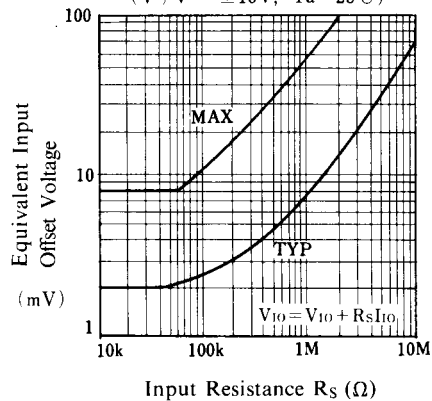
**Input Offset Voltage vs. Temperature**

( $V^+/V^- = \pm 15V$ )



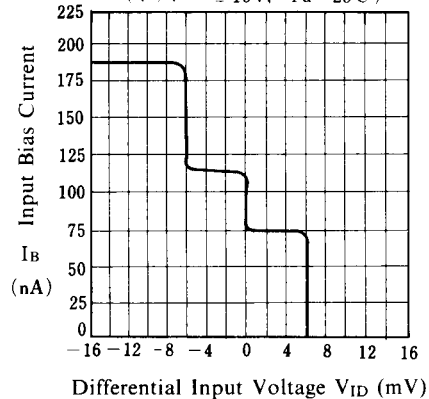
**Offset Voltage vs. Input Resistance**

( $V^+/V^- = \pm 15V$ ,  $T_a = 25^\circ C$ )



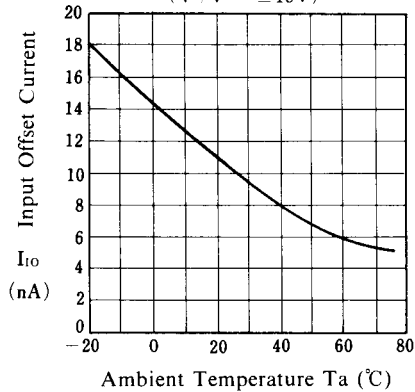
**Input Bias Current vs. Differential Input Voltage**

( $V^+/V^- = \pm 15V$ ,  $T_a = 25^\circ C$ )



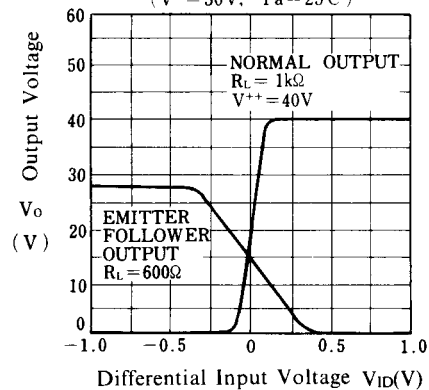
**Input Offset Current vs. Temperature**

( $V^+/V^- = \pm 15V$ )



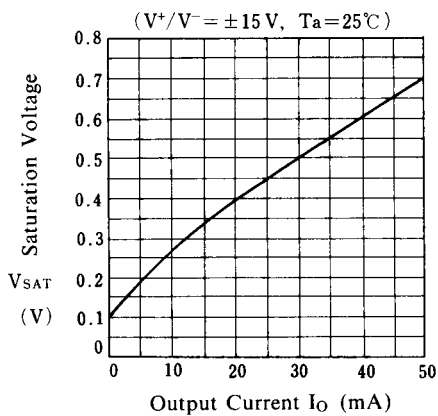
**Output Voltage vs. Differential Input Voltage**

( $V^+ = 30V$ ,  $T_a = 25^\circ C$ )

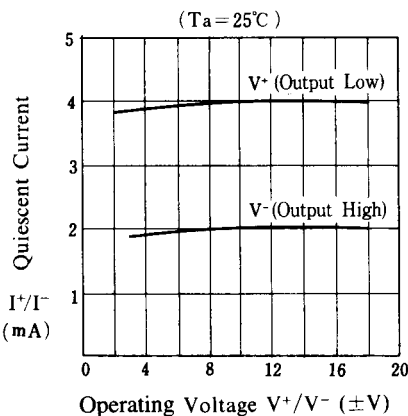


■ TYPICAL CHARACTERISTICS

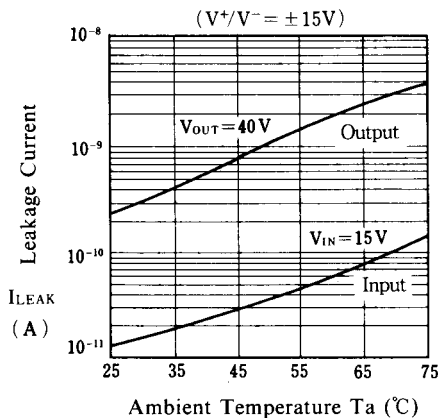
Saturation Voltage vs. Output Current



Quiescent Current vs. Operating Voltage

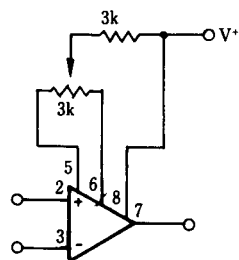


leakage Current vs. Temperature

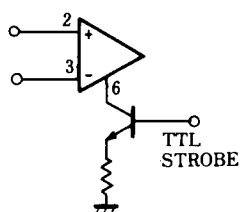


## ■ TYPICAL APPLICATIONS

Offset Null Circuit



Strobing



**[CAUTION]**

The specifications on this databook are only given for information, without any guarantee as regards either mistakes or omissions. The application circuits in this databook are described only to show representative usages of the product and not intended for the guarantee or permission of any right including the industrial rights.

# Mouser Electronics

Authorized Distributor

Click to View Pricing, Inventory, Delivery & Lifecycle Information:

Nisshinbo Micro Devices:

[NJM311M](#) [NJM311D](#)