

NHD-4.3-480272MF-22 Controller Board

TFT Controller Evaluation Board

| | |
|---------|---|
| NHD- | Newhaven Display |
| 4.3- | 4.3" Diagonal |
| 480272- | 480xRGBx272 pixels |
| MF- | Model |
| 22- | 22-POS FFC interface (8-bit data) SSD1963 Controller |

Newhaven Display International, Inc.

2661 Galvin Ct.

Elgin IL, 60124

Ph: 847-844-8795

Fax: 847-844-8796

www.newhavendisplay.com

nhtech@newhavendisplay.com

nhsales@newhavendisplay.com

Document Revision History

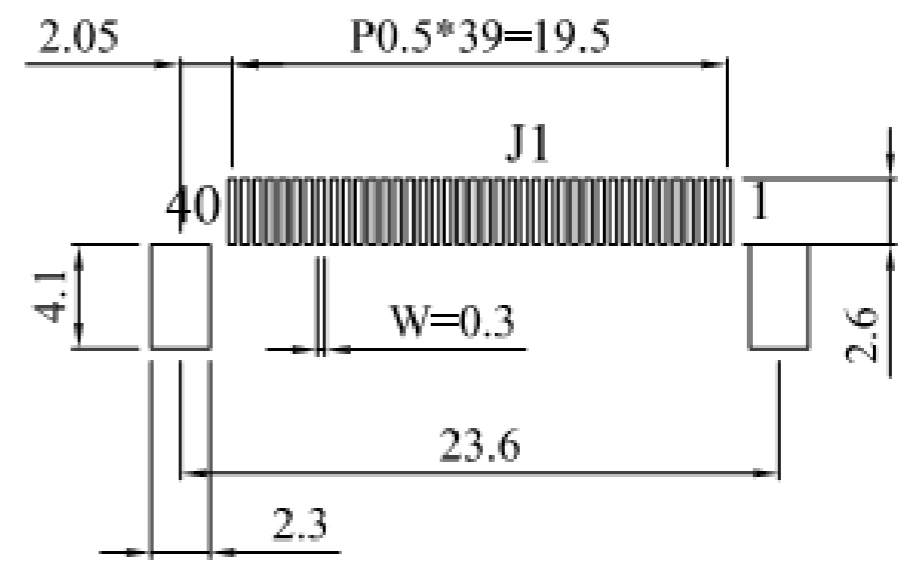
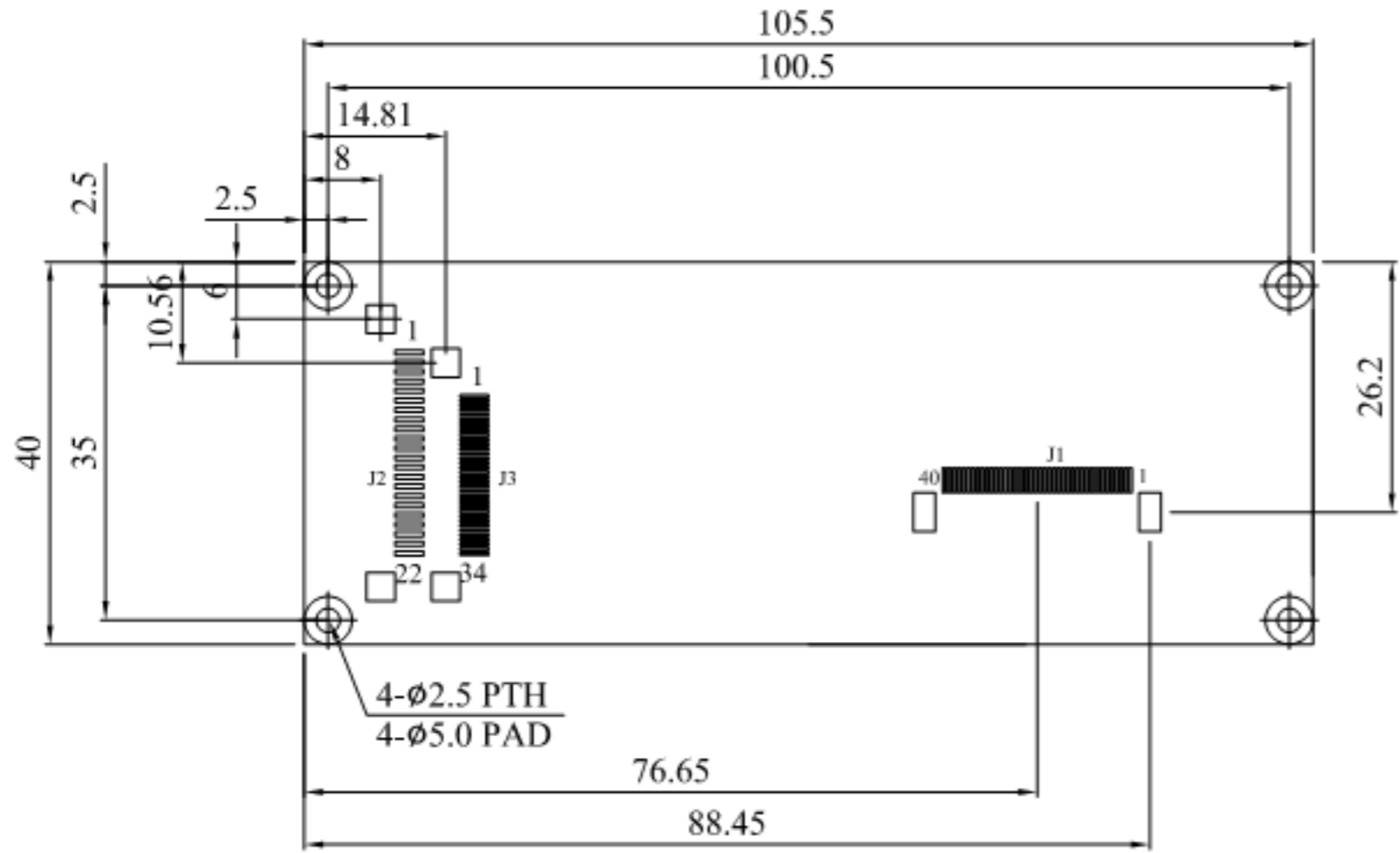
| Revision | Date | Description | Changed by |
|----------|-----------|---|------------|
| 0 | 5/14/2007 | Initial Release | CL |
| 1 | 4/27/2012 | J2 pin description updated | AK |
| 2 | 3/4/2021 | 2D Mechanical Drawing Redesign; Revised Compatibility to NHD-4.3-480272MF-ATXL# Models | AS |

Functions and Features

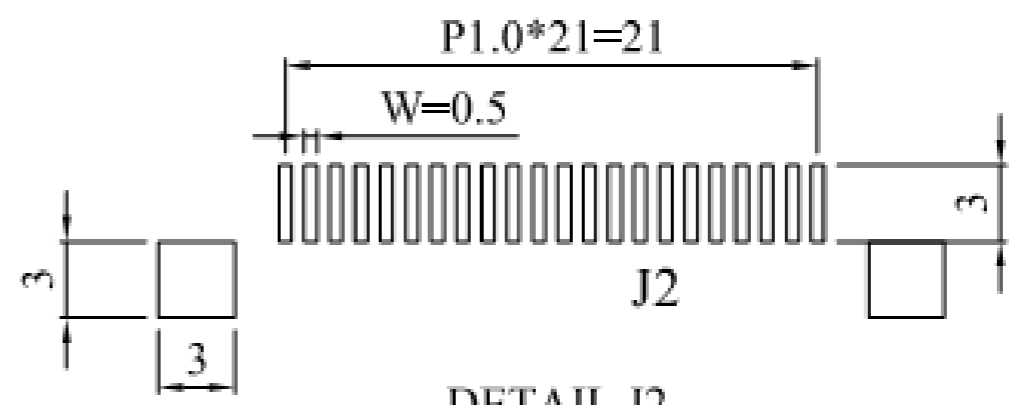
- To use for testing, evaluating, or in final production with NHD-4.3-480272MF-ATXL# displays.

Mechanical Drawing

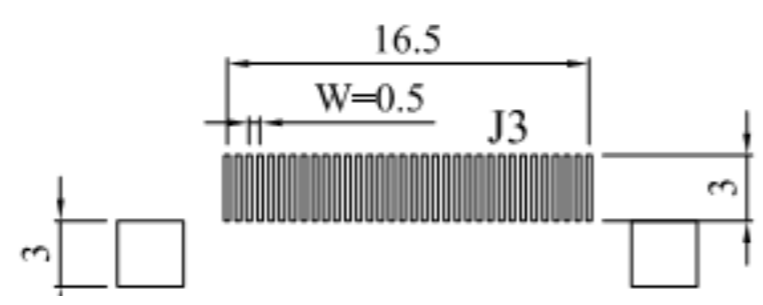
| SYMBOL | REVISION | DATE |
|--------|----------|------|
| | | |
| | | |



DETAIL J1
SCALE 2/1



DETAIL J2
SCALE 2/1



| | | |
|---|---|---|
| Standard Tolerance: (Unless otherwise specified) Linear: $\pm 0.3\text{mm}$ | | |
| | Drawing/Part Number: NHD-4.3-480272MF-22 Controller Board | Revision: 1.0 |
| Unless otherwise specified: • Dimensions are in Millimeters • Third Angle Projection | Drawn By: A. Shah Drawn Date: 3/4/2021 | Approved By: A. Shah Approved Date: 3/4/2021 |
| | Size: A3 Scale: NS | Sheet 1 of 1 |
| Do Not Scale Drawing | | |
| This drawing is solely the property of Newhaven Display International, Inc. The information it contains is not to be disclosed, reproduced or copied in whole or part without written approval from Newhaven Display. | | |

Note: J2 has a 22-POS FFC connector assembled.

Pin Description: J1 (SSD1963 output to display panel)

| Pin No. | Symbol | External Connection | Function Description |
|---------|---------|---------------------|---------------------------------------|
| 1 | LED- | LED Power Supply | Backlight GND |
| 2 | LED+ | LED Power Supply | Backlight Power (32mA @ 20~22V) |
| 3 | GND | Power Supply | GND |
| 4 | VCC | Power Supply | Power supply for LCD and logic (3.3V) |
| 5-12 | [R0-R7] | MPU | Red Data Signals |
| 13-20 | [G0-G7] | MPU | Green Data Signals |
| 21-28 | [B0-B7] | MPU | Blue Data Signals |
| 29 | GND | Power Supply | GND |
| 30 | PCLK | MPU | Data sample Clock signal |
| 31 | DISP | MPU | Display ON/OFF signal |
| 32 | HSYNC | MPU | Line synchronization signal |
| 33 | VSYNC | MPU | Frame synchronization signal |
| 34 | DE | MPU | Data Enable signal |
| 35 | AVDD | - | No Connect |
| 36 | GND | Power Supply | GND |
| 37 | XR | Touch Panel MPU | Touch Panel RIGHT |
| 38 | YD | Touch Panel MPU | Touch Panel DOWN |
| 39 | XL | Touch Panel MPU | Touch Panel LEFT |
| 40 | YU | Touch Panel MPU | Touch Panel UP |

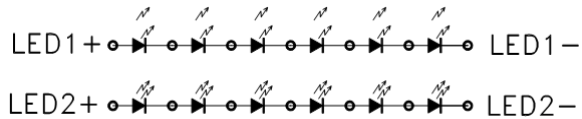
Pin Description: J2 (SSD1963 input from user's MPU)

| Pin No. | Symbol | External Connection | Function Description |
|---------|------------|---------------------|--|
| 1 | GND | Power Supply | GND |
| 2 | VCC | Power Supply | Power supply for LCD and logic (3.3V) |
| 3 | B/L Enable | Power Supply | Backlight Enable |
| 4 | RS | MPU | Register Select. RS=0: Command, RS=1: Data |
| 5 | WR | MPU | 8080 MPU Write Signal active LOW |
| 6 | RD | MPU | 8080 MPU Read Signal active LOW |
| 7-14 | DB0-DB7 | MPU | 8-bit bidirectional data bus |
| 15 | CS | MPU | Active LOW Chip Select signal |
| 16 | REST | MPU | Active LOW Reset signal |
| 17 | NC | - | No Connect |
| 18 | XR | Touch Panel MPU | Touch Panel RIGHT |
| 19 | DISP | MPU | Display On signal |
| 20 | YD | Touch Panel MPU | Touch Panel DOWN |
| 21 | XL | Touch Panel MPU | Touch Panel LEFT |
| 22 | YU | Touch Panel MPU | Touch Panel UP |

Electrical Characteristics

| Item | Symbol | Condition | Min. | Typ. | Max. | Unit |
|-----------------------------|--------|--------------|---------|-------|---------|------|
| Operating Temperature Range | Top | Absolute Max | -20 | - | +70 | °C |
| Storage Temperature Range | Tst | Absolute Max | -30 | - | +80 | °C |
| Supply Voltage | VDD | | 3.0 | 3.3 | 3.6 | V |
| Input High Voltage | VIH | | 0.8*VDD | - | VDD | V |
| Input Low Voltage | VIL | | 0 | - | 0.2*VDD | V |
| Supply Current | IVCI | | - | 285 | - | mA |
| Power Consumption | PLCD | | - | 940.5 | - | mW |

Backlight diagram:



Optical Characteristics

| Item | Symbol | Condition | Min. | Typ. | Max. | Unit |
|------------------------|--------|-----------|------|------|------|-------------------|
| Viewing Angle – Top | | Cr ≥ 10 | - | 15 | - | ° |
| Viewing Angle – Bottom | | Cr ≥ 10 | - | 35 | - | ° |
| Viewing Angle – Left | | Cr ≥ 10 | - | 45 | - | ° |
| Viewing Angle – Right | | Cr ≥ 10 | - | 45 | - | ° |
| Contrast Ratio | Cr | | - | 400 | - | |
| Luminance | YL | | 380 | - | 480 | cd/m ² |
| Response Time (rise) | Tr | - | - | 5 | 15 | ms |
| Response Time (fall) | Tr | - | - | 15 | 30 | ms |

Touch Panel Characteristics

| Item | Min. | Typ. | Max. | Unit |
|-----------------------------|-----------|------|------|------------|
| Linearity | - | - | 1.5 | % |
| Circuit Resistance – X-Axis | 450 | 800 | 1300 | Ω |
| Circuit Resistance – Y-Axis | 100 | 350 | 800 | Ω |
| Insulation Resistance | 10 | - | - | MΩ |
| Operating Voltage | - | - | 5 | V |
| Chattering | - | - | 10 | ms |
| Transmittance | 82 | - | - | % |
| Activation Force | 50 | - | 200 | g |
| Pen Writing Durability | 100,000 | - | - | Characters |
| Pitting Durability | 1,000,000 | - | - | Touches |
| Surface Hardness | 3 | - | - | H |
| Haze | - | 7 | - | % |

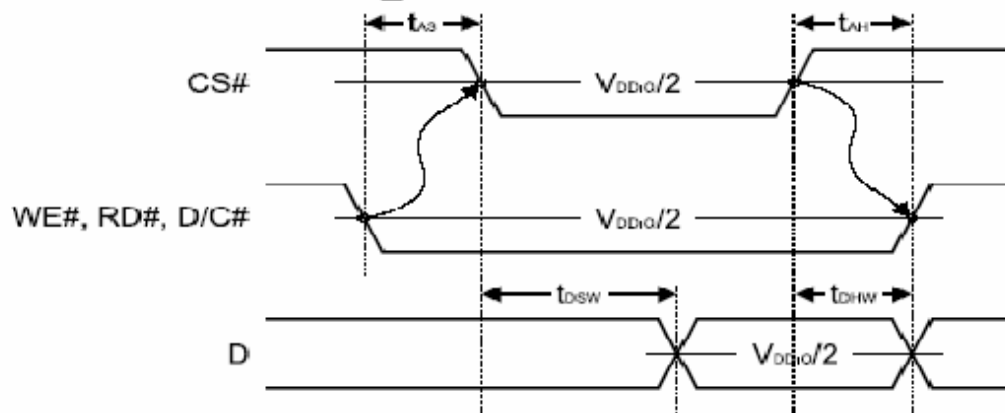
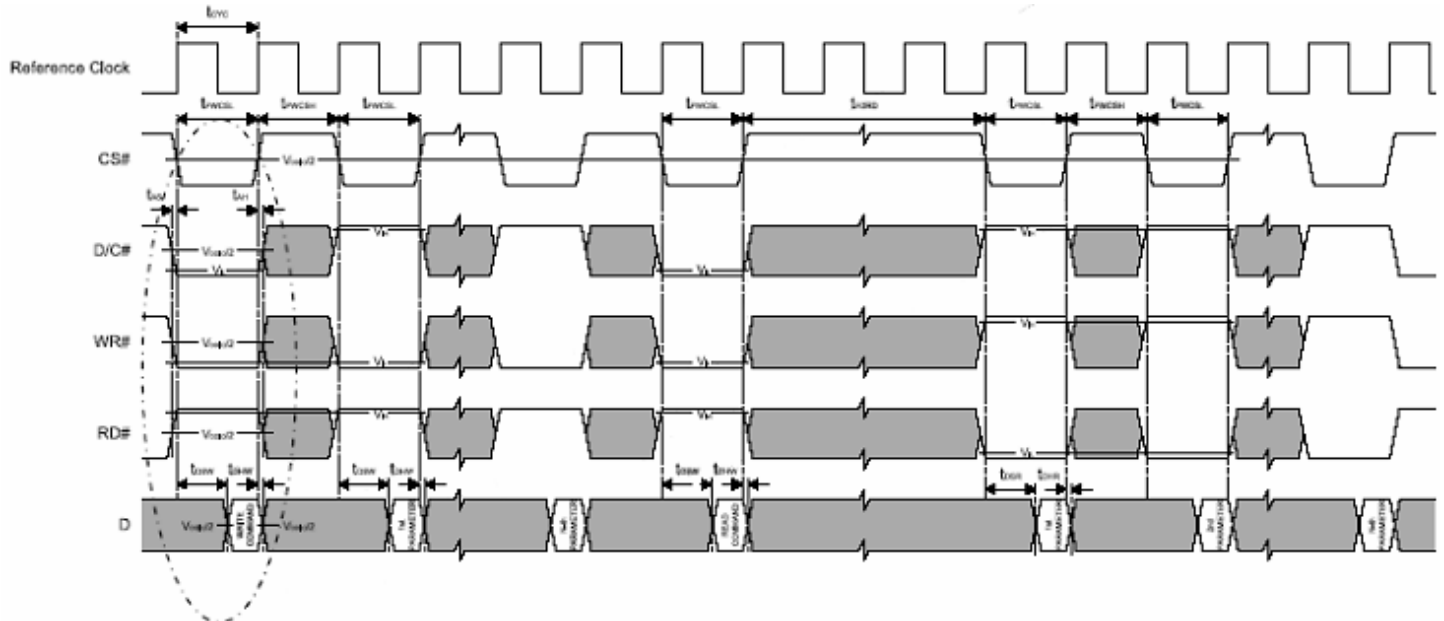
Controller Information

Built-in SSD1963

For specific timing and color information, please download specification at http://www.newhavendisplay.com/app_notes/SSD1963.pdf

8080 Mode Timing:

| Symbol | Parameter | Min | Typ | Max | Unit |
|--------------------|----------------------------|-----|-----|-----|------------------|
| t _{cy} | Reference Clock Cycle Time | 9 | - | - | ns |
| t _{PWCSL} | Pulse width CS# low | 1 | - | - | t _{CYC} |
| t _{PWCSH} | Pulse width CS# high | 1 | - | - | t _{CYC} |
| t _{FDRD} | First Read Data Delay | 5 | - | - | t _{CYC} |
| t _{AS} | Address Setup Time | 1 | - | - | ns |
| t _{AH} | Address Hold Time | 1 | - | - | ns |
| t _{DSW} | Data Setup Time | 4 | - | - | ns |
| t _{DHW} | Data Hold Time | 1 | - | - | ns |
| t _{DSR} | Data Access Time | - | - | 5 | ns |
| t _{DHR} | Output Hold time | 1 | - | - | ns |



Pixel Data Format

Both 6800 and 8080 support 8-bit, 9-bit, 16-bit, 18-bit and 24-bit data bus. Depending on the width of the data bus, the display data are packed into the data bus in different ways.

Pixel Data Format :

| Interface | Cycle | D[23] | D[22] | D[21] | D[20] | D[19] | D[18] | D[17] | D[16] | D[15] | D[14] | D[13] | D[12] | D[11] | D[10] | D[9] | D[8] | D[7] | D[6] | D[5] | D[4] | D[3] | D[2] | D[1] | D[0] |
|----------------------|-----------------|-------|-------|-------|-------|-------|-------|-------|-------|-------|-------|-------|-------|-------|-------|------|------|------|------|------|------|------|------|------|------|
| 24 bits | 1 st | R7 | R6 | R5 | R4 | R3 | R2 | R1 | R0 | G7 | G6 | G5 | G4 | G3 | G2 | G1 | G0 | B7 | B6 | B5 | B4 | B3 | B2 | B1 | B0 |
| 18 bits | 1 st | | | | | | | R5 | R4 | R3 | R2 | R1 | R0 | G5 | G4 | G3 | G2 | G1 | G0 | B5 | B4 | B3 | B2 | B1 | B0 |
| 16 bits (565 format) | 1 st | | | | | | | | | R5 | R4 | R3 | R2 | R1 | G5 | G4 | G3 | G2 | G1 | G0 | B5 | B4 | B3 | B2 | B1 |
| 16 bits | 1 st | | | | | | | | | R5 | R4 | R3 | R2 | R1 | R0 | X | X | G5 | G4 | G3 | G2 | G1 | G0 | X | X |
| | 2 nd | | | | | | | | | | | | | | | | | X | X | R5 | R4 | R3 | R2 | R1 | R0 |
| | 3 rd | | | | | | | | | | | | | | | | | X | X | B5 | B4 | B3 | B2 | B1 | B0 |
| 9 bits | 1 st | | | | | | | | | | | | | | | | | R5 | R4 | R3 | R2 | R1 | R0 | G5 | G4 |
| | 2 nd | | | | | | | | | | | | | | | | | | G2 | G1 | G0 | B5 | B4 | B3 | B2 |
| 8 bits | 1 st | | | | | | | | | | | | | | | | | | R5 | R4 | R3 | R2 | R1 | R0 | X |
| | 2 nd | | | | | | | | | | | | | | | | | | | G5 | G4 | G3 | G2 | G1 | G0 |
| | 3 rd | | | | | | | | | | | | | | | | | | | B5 | B4 | B3 | B2 | B1 | B0 |

X: Don't Care

Quality Information

| Test Item | Content of Test | Test Condition | Note |
|-------------------------------------|---|---|------|
| High Temperature storage | Endurance test applying the high storage temperature for a long time. | +80°C , 200hrs | 2 |
| Low Temperature storage | Endurance test applying the low storage temperature for a long time. | -30°C , 200hrs | 1,2 |
| High Temperature Operation | Endurance test applying the electric stress (voltage & current) and the high thermal stress for a long time. | +70°C 200hrs | 2 |
| Low Temperature Operation | Endurance test applying the electric stress (voltage & current) and the low thermal stress for a long time. | -20°C , 200hrs | 1,2 |
| High Temperature / Humidity Storage | Endurance test applying the electric stress (voltage & current) and the high thermal with high humidity stress for a long time. | +60°C , 90% RH , 96hrs | 1,2 |
| Thermal Shock resistance | Endurance test applying the electric stress (voltage & current) during a cycle of low and high thermal stress. | -20°C,30min -> 25°C,5min -> 70°C,30min = 1 cycle 10 cycles | |
| Vibration test | Endurance test applying vibration to simulate transportation and use. | 10-55Hz , 15mm amplitude. 60 sec in each of 3 directions X,Y,Z For 15 minutes | 3 |
| Static electricity test | Endurance test applying electric static discharge. | VS=800V, RS=1.5kΩ, CS=100pF One time | |

Note 1: No condensation to be observed.

Note 2: Conducted after 4 hours of storage at 25°C, 0%RH.

Note 3: Test performed on product itself, not inside a container.

Precautions for using LCDs/LCMs

See Precautions at www.newhavendisplay.com/specs/precautions.pdf

Warranty Information and Terms & Conditions

http://www.newhavendisplay.com/index.php?main_page=terms

Mouser Electronics

Authorized Distributor

Click to View Pricing, Inventory, Delivery & Lifecycle Information:

[Newhaven Display:](#)

[NHD-4.3-480272MF-22 Controller Board](#)