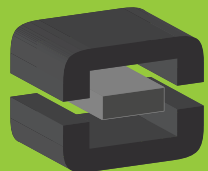


From Off-The-Shelf to Market-Ready© New Age Enclosures is your Single Source Solution.
Let us quote modifying our Stock Enclosures to meet your end-use.
visit newageenclosures.com/services or call 855-4NA-ENCL today.

CNC CUTOUTS
PART DECORATING
CUSTOM COLOR AND MATERIAL
RF/EMI SHEILDING
CUSTOM TOOL INSERTS
CUSTOM ENCLOSURES AND DESIGN



NEW AGE
ENCLOSURES
DEVELOP THE FUTURE

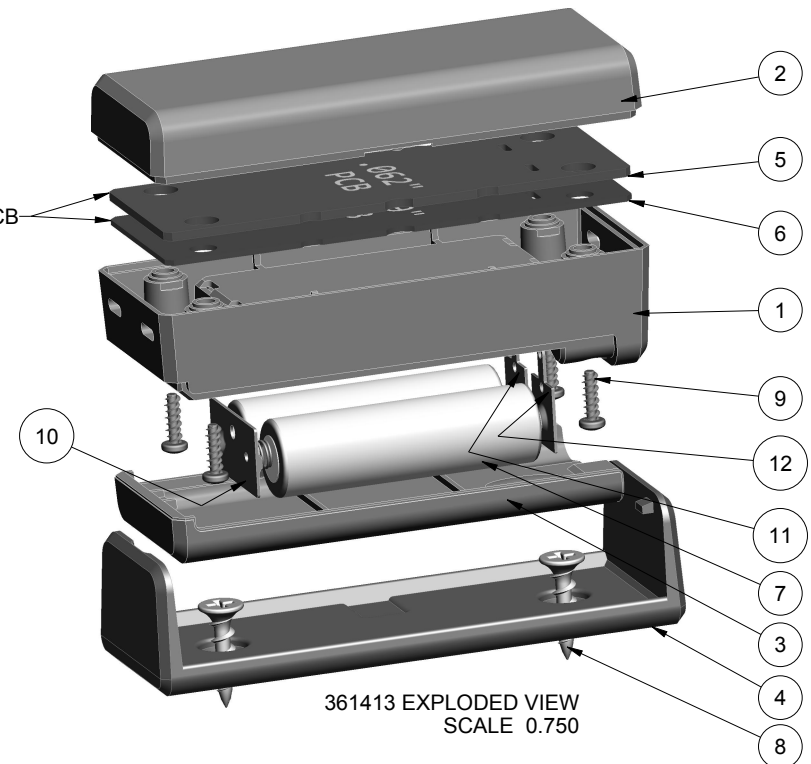


NOTES: UNLESS OTHERWISE SPECIFIED

- CORNERS DRAWN SHARP TO BE R.005 MAXIMUM.
- EXTERIOR SURFACE TEXTURE TO BE LIGHT EDM FINISH, EQUIVALENT TO MT-11010. APPEARANCE AND DEPTH OF TEXTURE VARIES OVER TIME DUE TO WEAR.
- INTERIOR SURFACE TEXTURE TO BE: AS MOLDED.
- ALL INSIDE RADII .010R, UNLESS OTHERWISE SPECIFIED.
- ALL EXTERNAL DIMENSIONS AFFECTED BY THE DRAFT APPLY AT THE LARGE END OF THE FEATURE, AND ALL INTERNAL FEATURES AFFECTED BY THE DRAFT APPLY AT THE SMALL END OF THE FEATURE UNLESS OTHERWISE SPECIFIED.
- 1 DEGREE DRAFT IN THE DIRECTION OF PULL IS PERMISSIBLE UNLESS OTHERWISE SPECIFIED.
- MATERIAL / COLOR: ABS PLASTIC IS STANDARD IN BLACK OR WHITE. CUSTOM MATERIALS AND COLORS ARE AVAILABLE UPON REQUEST FOR QUOTE.
- PCB SIZES ARE RECOMMENDATIONS ONLY. FINAL SIZES AND VERIFICATION OF ITS FIT ARE THE SOLE RESPONSIBILITY OF EACH OWNER.
- ASSEMBLY SCREWS FOR THE ENCLOSURE INCLUDED.
- THIS DRAWING IS BASED ON A SOLID MODEL, AND IS FURTHER DEFINED BY THE SOLID MODEL FILE.
- ALLOWABLE FLASH: 0.005 MAX.
- ALL EJECTOR PIN MARKS TO BE WITHIN 0.010" OF FLUSH, PROTRUDING OR BELOW FLUSH.
- TRIM GATE WITHIN 0.015" OF FLUSH.

R E V I S I O N				
REV.	DRAWN BY	ECO No	DESCRIPTION	DATE
A	M BOYER		PRELIMINARY RELEASE	2014-May-02
B	M BOYER		REDUCE HEIGHT OF HATCH LIP	2014-May-16
C	M BOYER		INCREASE HEIGHT OF COVER .102	2014-Oct-07
D	M BOYER		ADD .039" BOARD OPTION	2014-Oct-21
E	M BOYER		CLOSE UP BEAUTY RING AND ADD DRAWING DETAILS	2014-Dec-01
1.0	R CRUZ	0469	UPDATE TO AS-BUILT AND RELEASE	2015-Sep-03
2.0	M BOYER	02016	INCLUDE WALL CRADLE	2016-Mar-21
3.0	R CRUZ	05416	UPDATE NOTES 2 AND 3	2016-Dec-20
4.0	M BOYER	01417	INCREASE LEAD-IN ON HATCH LATCH	2017-May-11

SHOWN WITH BOTH PCB
CHOOSE ONE



361413 EXPLODED VIEW
SCALE 0.750

361413(x) CONFIGURATIONS			
	-[BLANK]	-K	-W
361413 COVER	1	1	
361413 BASE	1		
361413 BASE w/ WALL NOTCHES		1	
361413 BATTERY HATCH	1	1	
361413 WALL CRADLE		1	1
#4 HiLo SCREW .375"	4	4	

12	AA-SINGL-CONTACT-POS	ACC-AAPOS-5223	SPRING STEEL	SOLD SEPARATELY	1
11	AA-SINGL-CONTACT-NEG	ACC-AANEG-5201	SPRING STEEL	SOLD SEPARATELY	1
10	AA-DBL-CONTACT	ACC-AADBL-5212	SPRING STEEL	SOLD SEPARATELY	1
9	SCREW_HILO-NO4X375	#4 HiLo x .375" SCREW	ZINK PLATED	INCLUDED	4
8	SCREW-DRYWALLX750	DRYWALL SCREW	REFERENCE ONLY	CUSTOMER SUPPLIED	2
7	BATTERY_AA	"AA" SIZE BATTERY	REFERENCE	CUSTOMER SUPPLIED	2
6	361413-PCB_039	361413 .039" PCB - REFERENCE	1 MM THICK	CUSTOMER SUPPLIED	1
5	361413-PCB_062	361413 .062" PCB - REFERENCE	.062" THICK	CUSTOMER SUPPLIED	1
4	361413-WALL	361413 WALL CRADLE - STANDARD	ABS	BLACK or WHITE	1
3	361413-HATCH	361413 HATCH - STANDARD	ABS	BLACK or WHITE	1
2	361413-COVER	361413 COVER - STANDARD	ABS	BLACK or WHITE	1
1	361413-BASE	361413 BASE - STANDARD	ABS	BLACK or WHITE	1

ITEM	FILE NAME	DESCRIPTION	MATERIAL	COLOR	QTY.
BILL OF MATERIALS					

THIRD ANGLE PROJECTION
DO NOT SCALE DRAWING

TOLERANCES: UNLESS OTHERWISE SPECIFIED
DIMENSIONS ARE IN U.S. INCHES.
X.XX = .015 X.XXXX = .001
X.XXX = .010 X.X" = 1°

NEW AGE ENCLOSURES

Customer's Part No: 361413

APPROVAL BY DATE

CHECK

ENG.

SCALE AS NOTED

DRAWN BY M BOYER

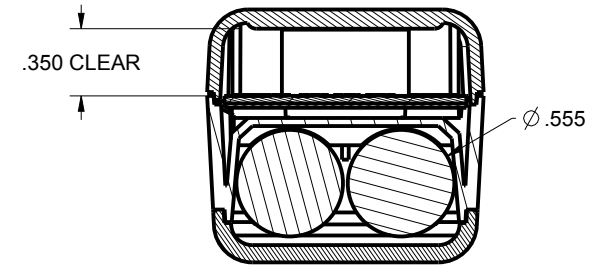
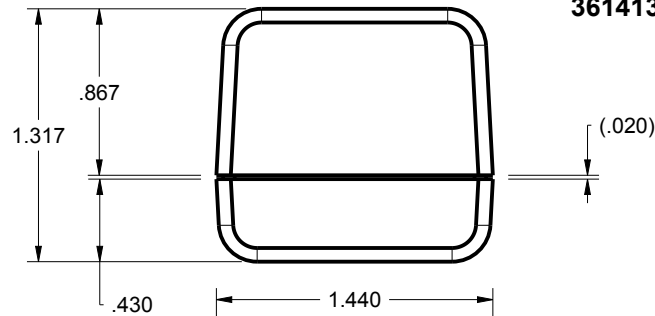
2014-May-02

NEW AGE ENCLOSURES
2240 South Thornburg Street Santa Maria, CA. 93455
ph. (805) 595-1310 fax (805) 595-1024
www.newageenclosures.com

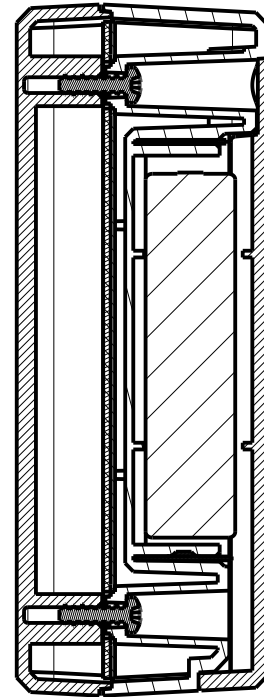
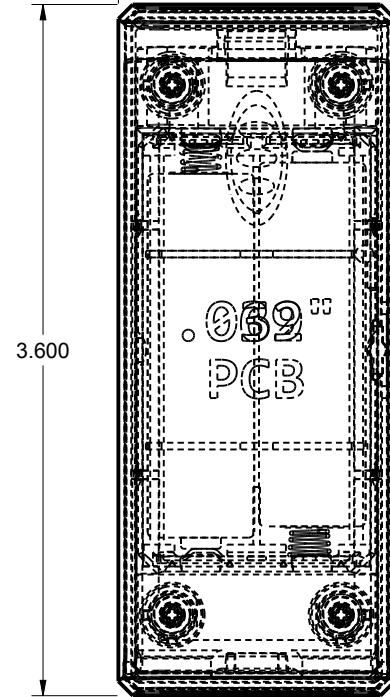
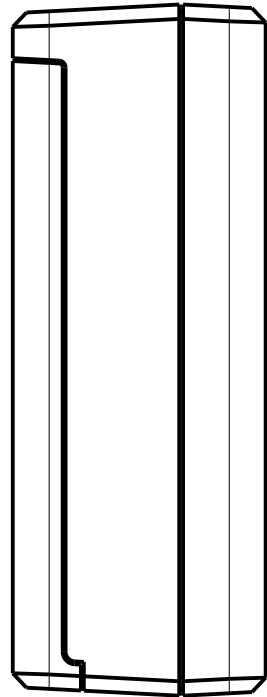
**COMPACT AA - STANDARD
SXX-361413X-XXX**

SIZE A DRAWING NAME 361413_R4_0 SHEET 1 OF 8 REV.DOC 4.0

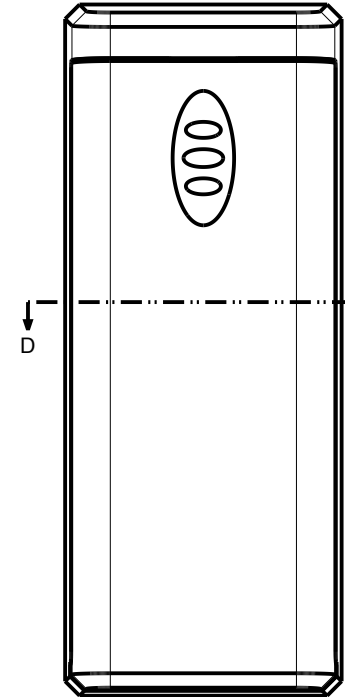
361413 ASSEMBLY



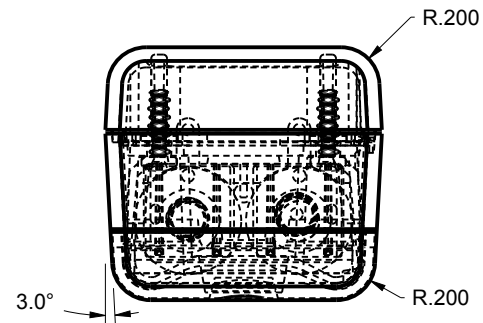
SECTION D-D



SECTION P-P



SCALE 1.000



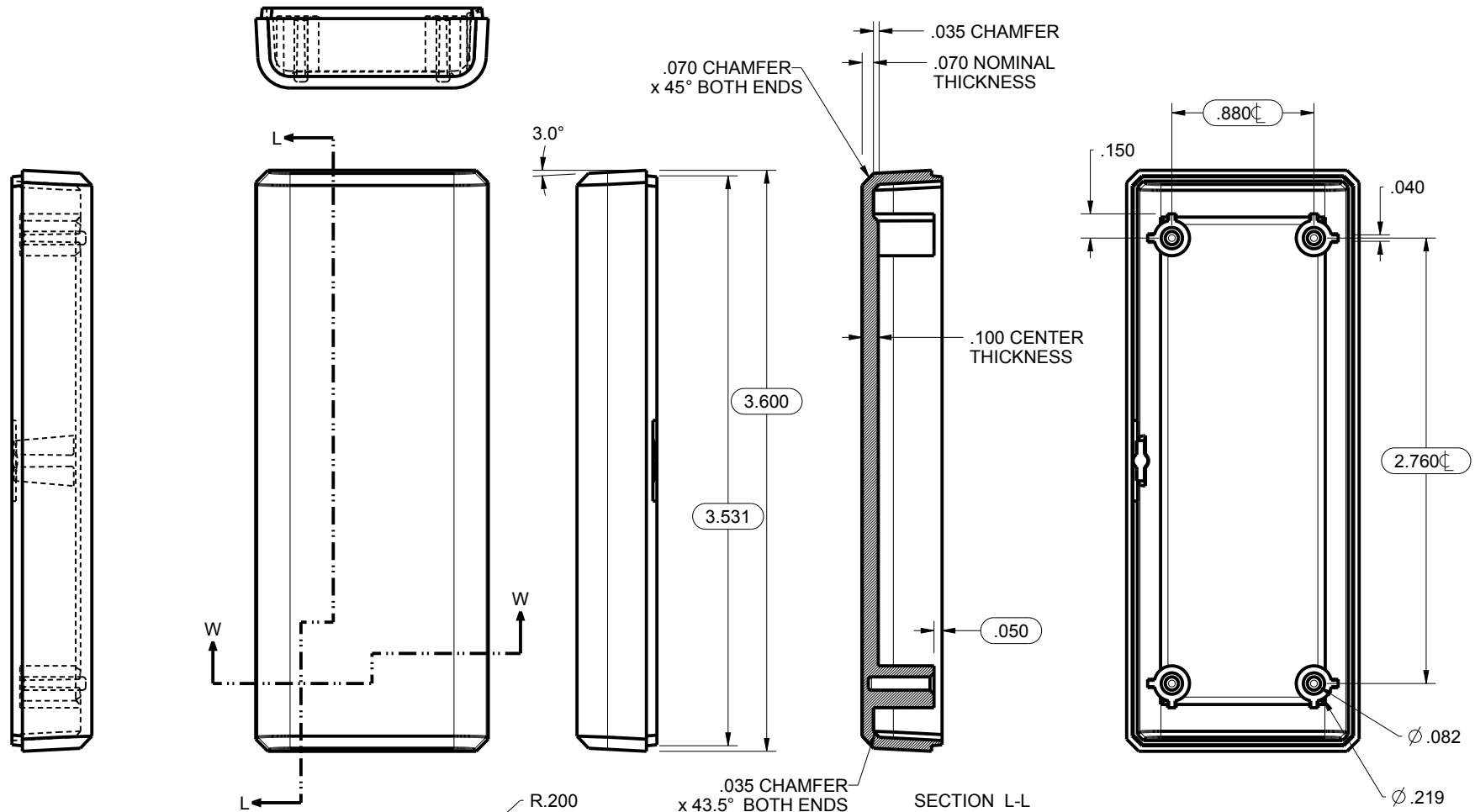
TOLERANCES- UNLESS OTHERWISE SPECIFIED DIMENSIONS ARE IN U.S. INCHES.		
X.XX = .015 X.XXXX = .001		
X.XXX = .010 X.X° = 1°		
NEW AGE ENCLOSURES		
Customer's Part No: 361413		
APPROVAL	BY	DATE
CHECK		
ENG.		
SCALE	AS NOTED	
DRAWN BY	2014-May-02	
M BOYER		

NEW AGE ENCLOSURES
 2240 South Thornburg Street Santa Maria, CA. 93455
 ph. (805) 595-1310 fax (805) 595-1024
www.newageenclosures.com

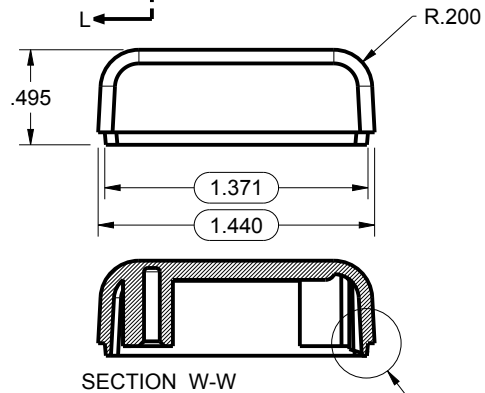
COMPACT AA - STANDARD
SXX-361413X-XXX

SIZE	DRAWING NAME	SHEET	REV.DOC
A	361413_R4_0	2 OF 8	4.0

361413 COVER



SCALE 1.000



SECTION W-W

SEE DETAIL A

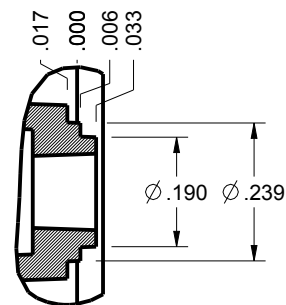
TOLERANCES- UNLESS OTHERWISE SPECIFIED DIMENSIONS ARE IN U.S. INCHES.	
X.XX = .015 X.XXXX = .001	
X.XXX = .010 X.X° = 1°	
NEW AGE ENCLOSURES	
Customer's Part No: 361413	
APPROVAL	BY DATE
CHECK	
ENG.	
SCALE	AS NOTED
DRAWN BY	2014-May-02
M BOYER	

NEW AGE ENCLOSURES	
2240 South Thornburg Street Santa Maria, CA. 93455	
ph. (805) 595-1310 fax (805) 595-1024	
www.newageenclosures.com	
COMPACT AA - STANDARD	
SXX-361413X-XXX	
SIZE	DRAWING NAME
A	361413_R4_0
SHEET	REV.DOC
3 OF 8	4.0

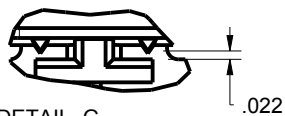
WALL MOUNTING HOLES
NOT PRESENT UNLESS
WALL CRADLE IS ORDERED.

361413 BASE

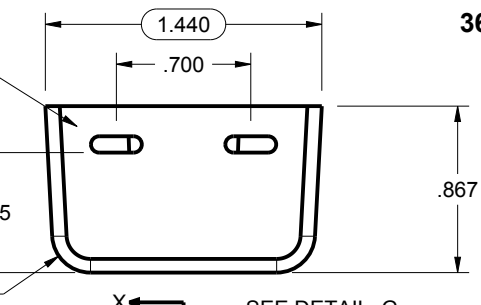
DETAIL E
SCALE 3.000



DETAIL G
SCALE 2.000

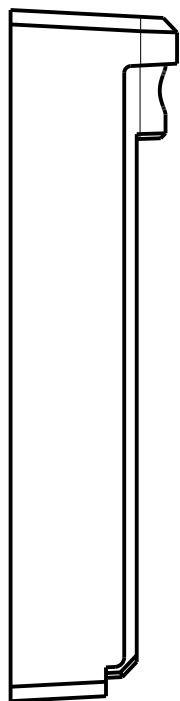


R.200

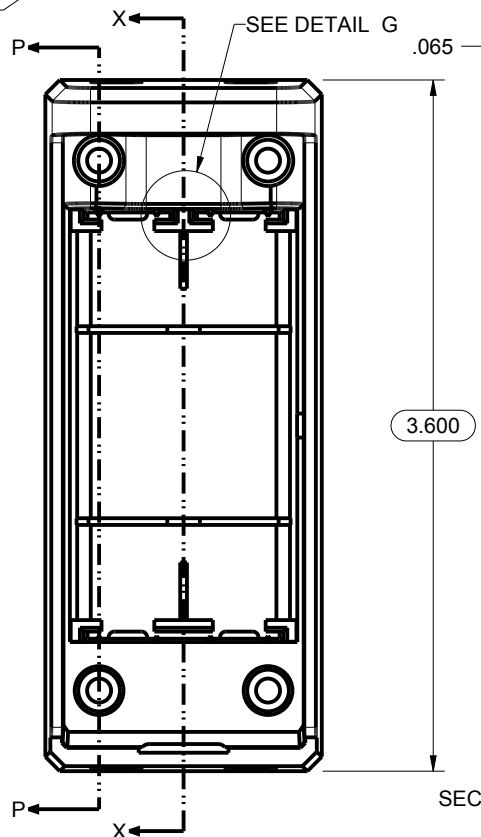


SEE DETAIL D

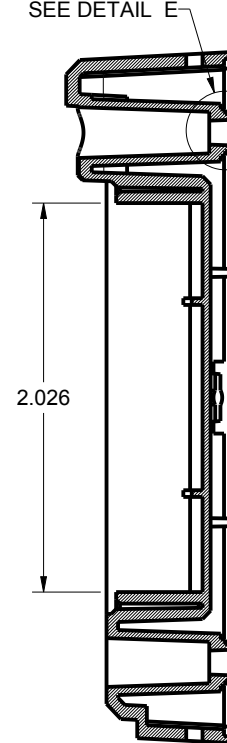
SEE DETAIL E



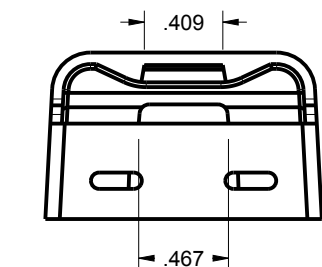
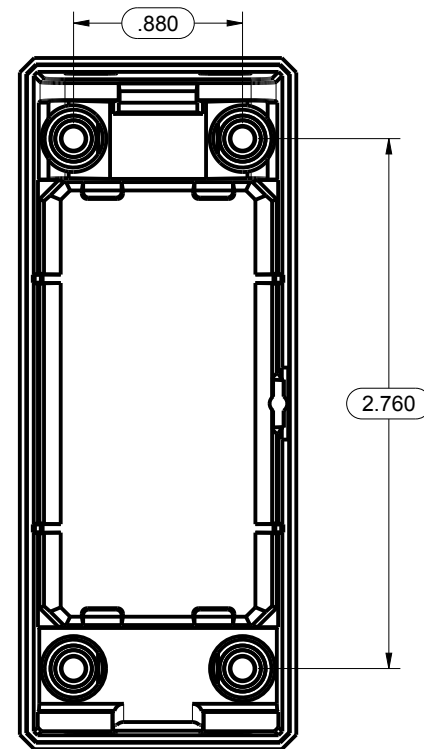
SCALE 1.000



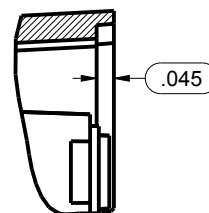
SECTION X-X



SECTION P-P



DETAIL D
SCALE 2.000



TOLERANCES: UNLESS OTHERWISE SPECIFIED
DIMENSIONS ARE IN U.S. INCHES.
X.XX = .015 X.XXXX = .001
X.XXX = .010 X.X° = 1°

NEW AGE ENCLOSURES

Customer's Part No: 361413

APPROVAL	BY	DATE
CHECK		
ENG.		
SCALE	AS NOTED	

DRAWN BY
M BOYER 2014-May-02

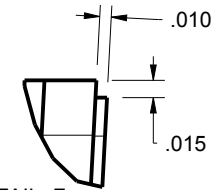
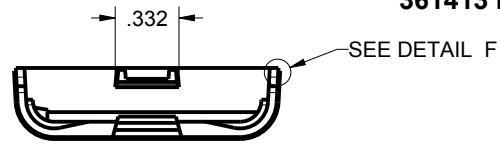
NEW AGE ENCLOSURES

2240 South Thornburg Street Santa Maria, CA. 93455
ph. (805) 595-1310 fax (805) 595-1024
www.newageenclosures.com

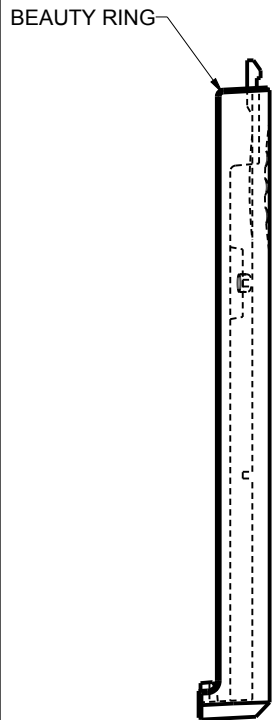
**COMPACT AA - STANDARD
SXX-361413X-XXX**

SIZE A	DRAWING NAME 361413_R4_0	SHEET 4 OF 8	REV.DOC 4.0
-----------	-----------------------------	-----------------	----------------

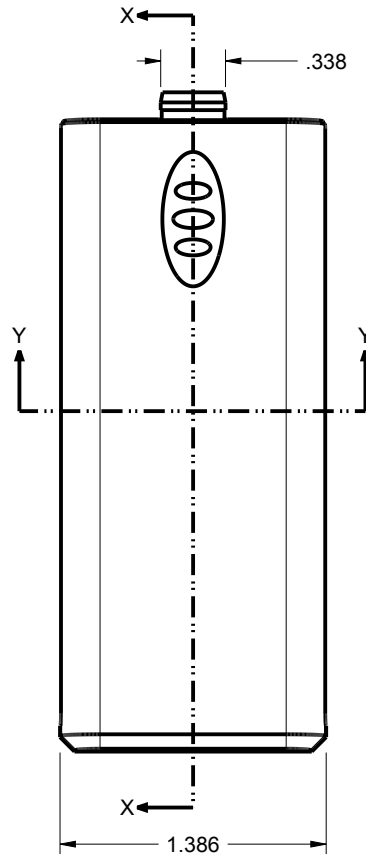
361413 HATCH



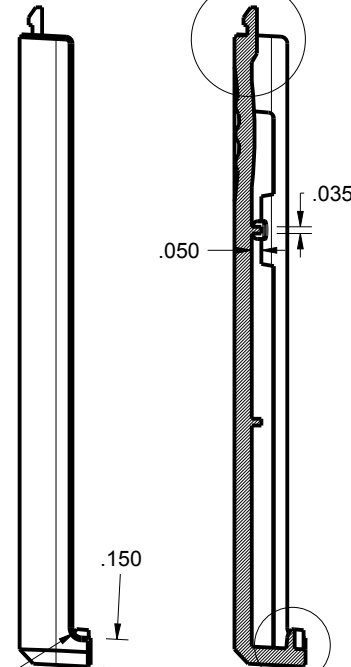
DETAIL F
SCALE 6.000



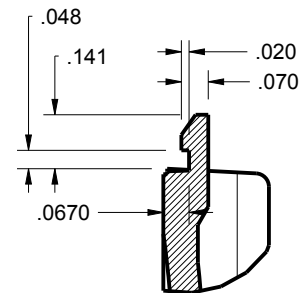
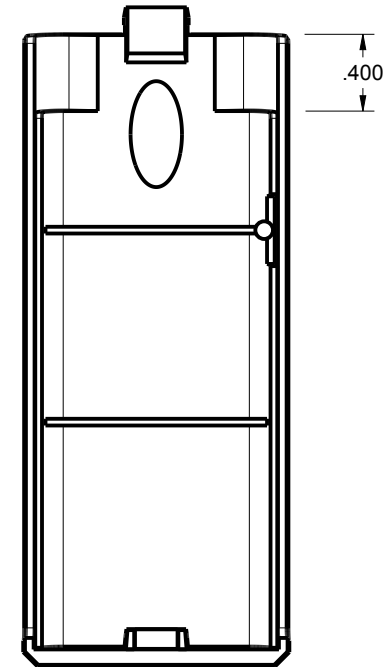
SCALE 1.000



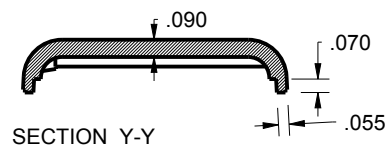
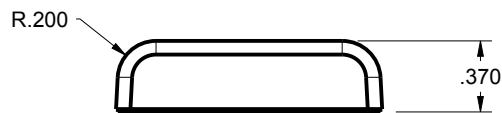
SEE DETAIL B



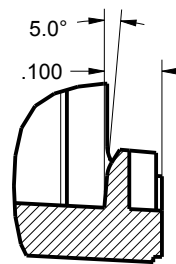
SECTION X-X



DETAIL B
SCALE 2.000



SECTION Y-Y



DETAIL C
SCALE 3.000

TOLERANCES: UNLESS OTHERWISE SPECIFIED DIMENSIONS ARE IN U.S. INCHES.		
X.XX = .015 X.XXXX = .001		
X.XXX = .010 X.X° = 1°		
NEW AGE ENCLOSURES		
Customer's Part No: 361413		
APPROVAL	BY	DATE
CHECK		
ENG.		
SCALE	AS NOTED	
DRAWN BY	2014-May-02	
M BOYER		

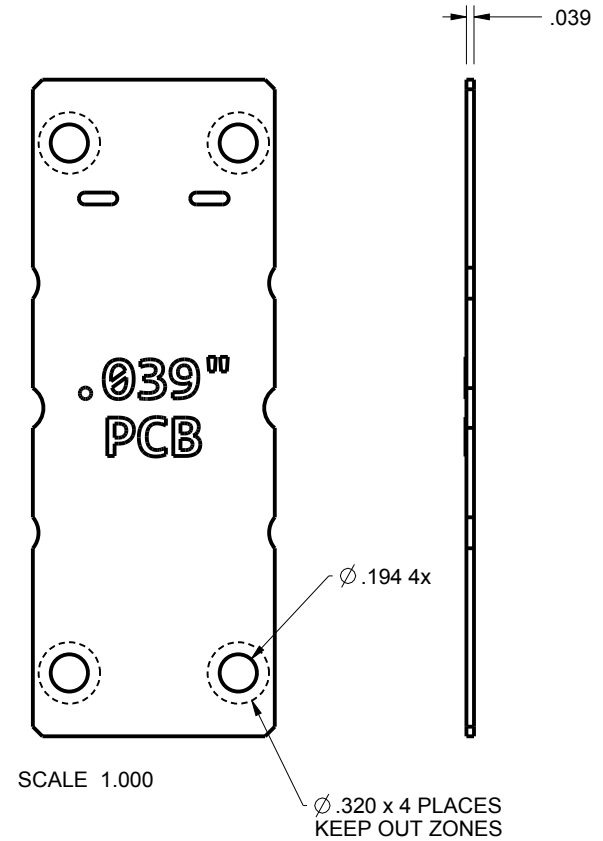
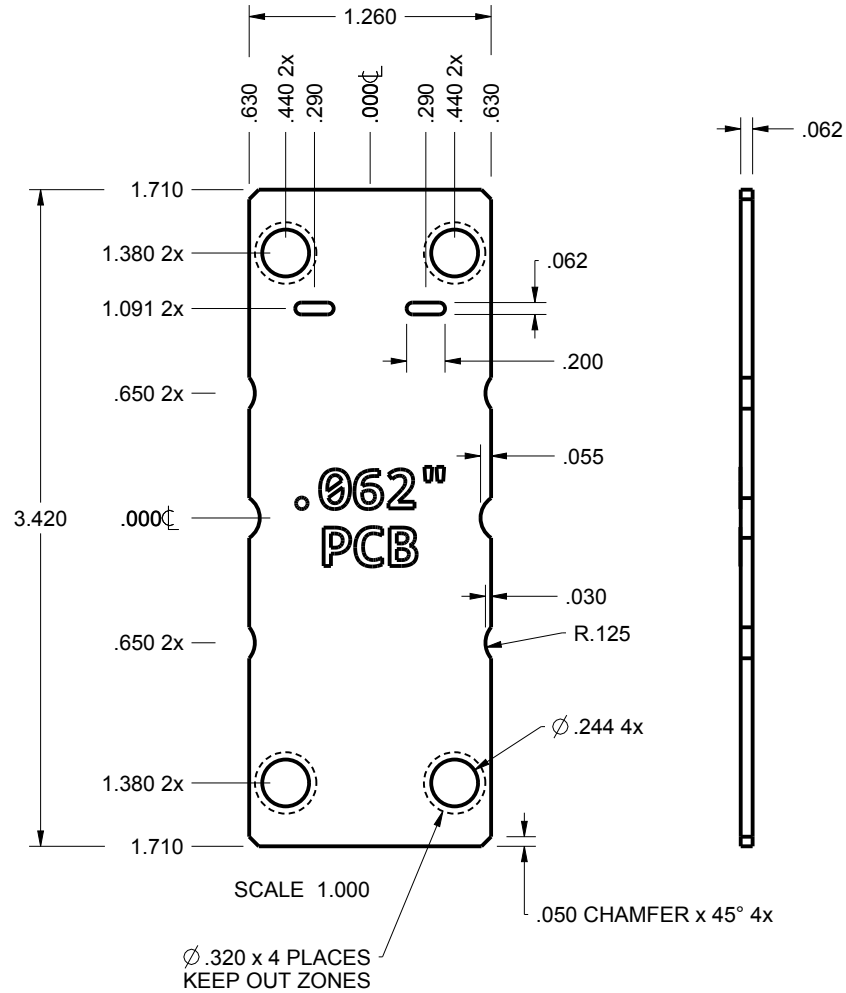
NEW AGE ENCLOSURES		
2240 South Thornburg Street Santa Maria, CA. 93455		
ph. (805) 595-1310 fax (805) 595-1024		
www.newageenclosures.com		

COMPACT AA - STANDARD
SXX-361413X-XXX

SIZE	DRAWING NAME	SHEET	REV.DOC
A	361413_R4_0	5 OF 8	4.0

361413 PCB - CUSTOMER SUPPLIED

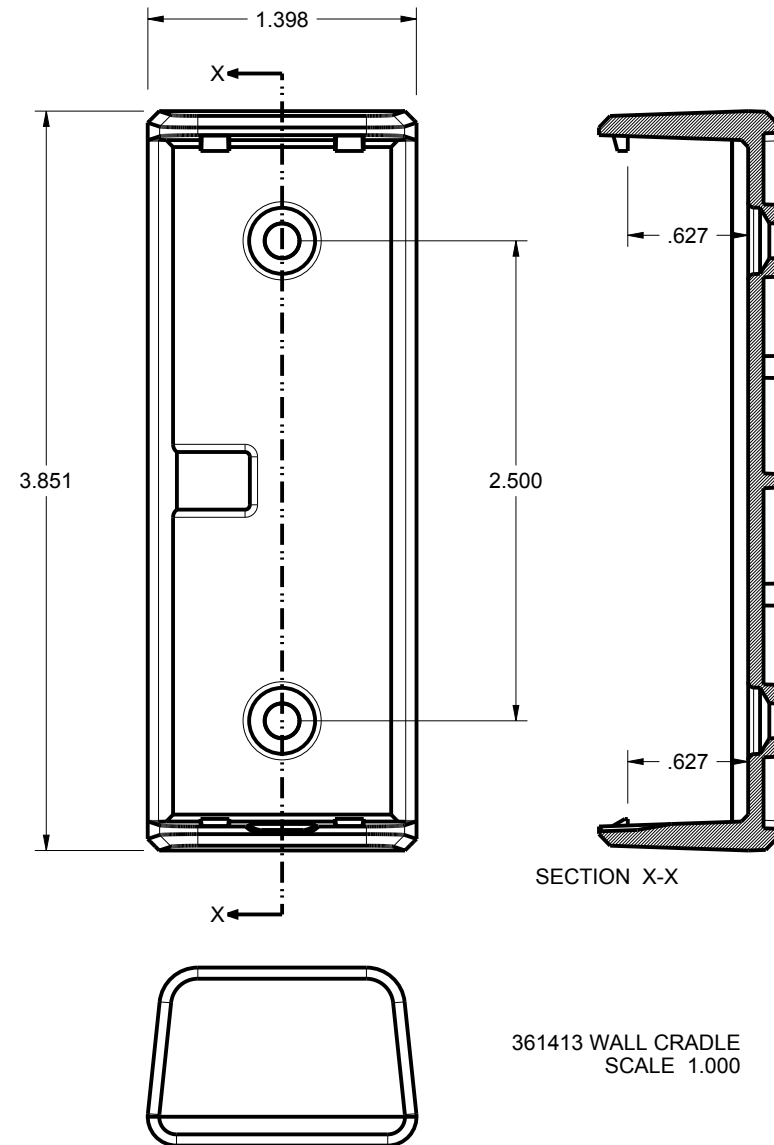
PCB SIZES ARE RECOMMENDATIONS ONLY. FINAL
SIZES AND VERIFICATION OF ITS FIT ARE THE
SOLE RESPONSIBILITY OF THE OEM.



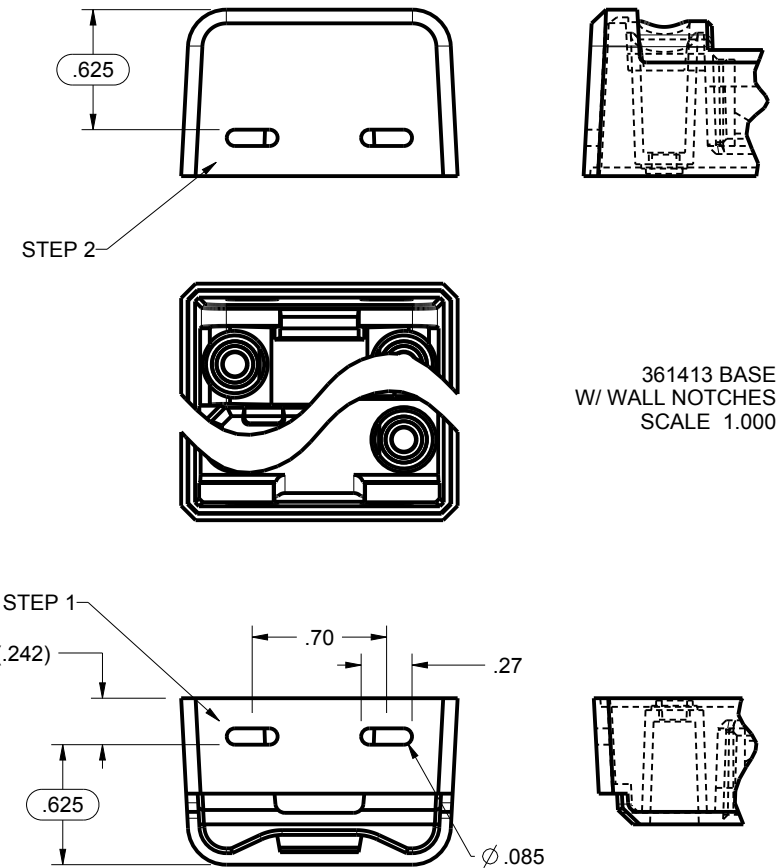
THIS ENCLOSURE CAN ACCOMODATE
EITHER PCB THICKNESS

TOLERANCES- UNLESS OTHERWISE SPECIFIED DIMENSIONS ARE IN U.S. INCHES.	
X.XX = .015 X.XXXX = .001	
X.XXX = .010 X.X° = 1°	
NEW AGE ENCLOSURES	
Customer's Part No: 361413	
APPROVAL	BY DATE
CHECK	
ENG.	
SCALE	AS NOTED
DRAWN BY	2014-May-02
M BOYER	

NEW AGE ENCLOSURES	
2240 South Thornburg Street Santa Maria, CA. 93455 ph. (805) 595-1310 fax (805) 595-1024 www.newageenclosures.com	
COMPACT AA - STANDARD SXX-361413X-XXX	
SIZE	DRAWING NAME
A	361413_R4_0
SHEET	REV.DOC
6 OF 8	4.0



361413 - 2nd OPERATION DETAILS - 1 of 2
 NEW AGE ENCLOSURES DELIVERS YOUR ENCLOSURE MARKET-READY WITH IN-HOUSE
 CNC MACHINING, PAD PRINTING, ASSEMBLY, AND FULFILLMENT.
 ALL SURFACES AND AREAS ARE AVAILABLE FOR CNC ALTERATION BY NEW AGE ENCLOSURES
 CALL (805) 595-1310 FOR PRICING AND SCHEDULE.
 THE INSIDE RADIUS OF ANY MACHINED FEATURES SHOULD BE NO SMALLER THAN .031"

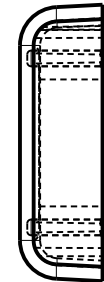
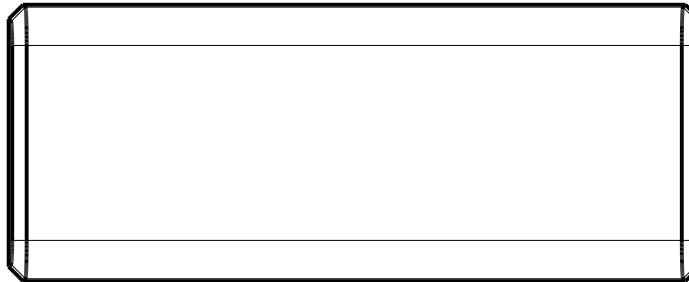
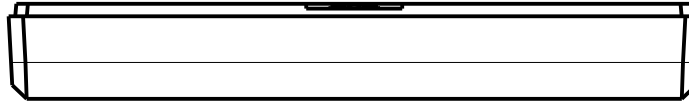


SXX-361413K-XXX BASE - ABS, BLACK					
STEP NO	DESCRIPTION	CUTTER	FIXTURE	ORIENTATION	PROGRAM
1-C-C1	WALL NOTCHES	T2 = .062" EM	332	SINGLE	o1401
2-C-C2	WALL NOTCHES	T2 = .062" EM	332	SINGLE	o1401

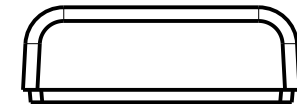
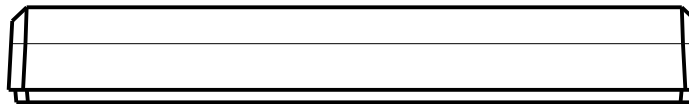
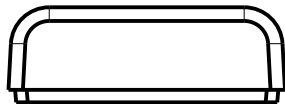
TOLERANCES: UNLESS OTHERWISE SPECIFIED DIMENSIONS ARE IN U.S. INCHES. X.XX = .015 X.XXXX = .001 X.XXX = .010 X.X° = 1°			NEW AGE ENCLOSURES 2240 South Thornburg Street Santa Maria, CA. 93455 ph. (805) 595-1310 fax (805) 595-1024 www.newageenclosures.com			
NEW AGE ENCLOSURES						
Customer's Part No: 361413						
APPROVAL	BY	DATE	COMPACT AA - STANDARD SXX-361413X-XXX			
CHECK						
ENG.						
SCALE	AS NOTED					
DRAWN BY M BOYER			SIZE A	DRAWING NAME 361413 R4 0	SHEET 7 OF 8	REV.DOC 4.0
2014-May-02						

361413 - 2nd OPERATION DETAILS - 2 OF 2

NEW AGE ENCLOSURES DELIVERS YOUR ENCLOSURE MARKET-READY WITH IN-HOUSE
CNC MACHINING, PAD PRINTING, ASSEMBLY, AND FULFILLMENT.
ALL SURFACES AND AREAS ARE AVAILABLE FOR CNC ALTERATION BY NEW AGE ENCLOSURES
CALL (805) 595-1310 FOR PRICING AND SCHEDULE.
THE INSIDE RADIUS OF ANY MACHINED FEATURES SHOULD BE NO SMALLER THAN .031"



SCALE 1.000



TOLERANCES- UNLESS OTHERWISE SPECIFIED
DIMENSIONS ARE IN U.S. INCHES.
X.XX = .015 X.XXXX = .001
X.XXX = .010 X.X° = 1°

NEW AGE ENCLOSURES

Customer's Part No: 361413

APPROVAL	BY	DATE
CHECK		
ENG.		
SCALE	AS NOTED	
DRAWN BY	M BOYER	
	2014-May-02	

NEW AGE ENCLOSURES
2240 South Thornburg Street Santa Maria, CA. 93455
ph. (805) 595-1310 fax (805) 595-1024
www.newageenclosures.com

COMPACT AA - STANDARD
SXX-361413X-XXX

SXX-361413-XXX COVER - ABS, BLACK					
STEP NO	DESCRIPTION	CUTTER	FIXTURE	ORIENTATION	PROGRAM
1-C-C1	-	T2 = .062" EM	349	SINGLE	-
2-C-C2	-	T2 = .062" EM	349	-	-

SIZE	DRAWING NAME	SHEET	REV.DOC
A	361413_R4_0	8 OF 8	4.0

Mouser Electronics

Authorized Distributor

Click to View Pricing, Inventory, Delivery & Lifecycle Information:

[New Age Enclosures:](#)

[S3A-361413](#)