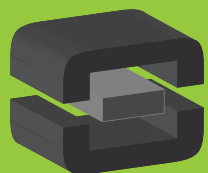


From Off-The-Shelf to Market-Ready© New Age Enclosures is your Single Source Solution.  
Let us quote modifying our Stock Enclosures to meet your end-use.  
visit [newageenclosures.com/services](http://newageenclosures.com/services) or call 855-4NA-ENCL today.

**CNC CUTOUTS**  
**PART DECORATING**  
**CUSTOM COLOR AND MATERIAL**  
**RF/EMI SHIELDING**  
**CUSTOM TOOL INSERTS**  
**CUSTOM ENCLOSURES AND DESIGN**

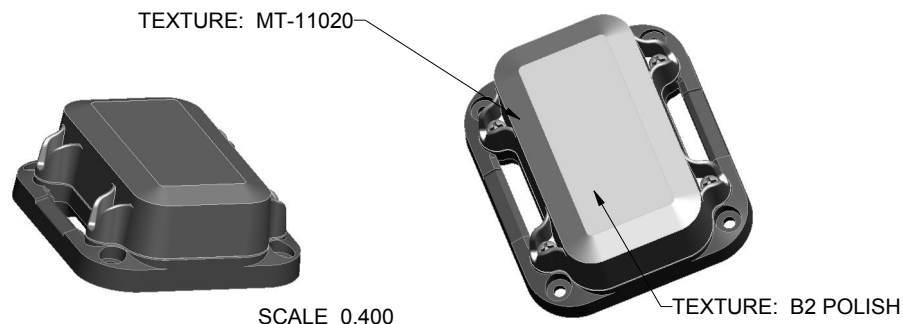


**NEW AGE**  
**ENCLOSURES**  
DEVELOP THE FUTURE

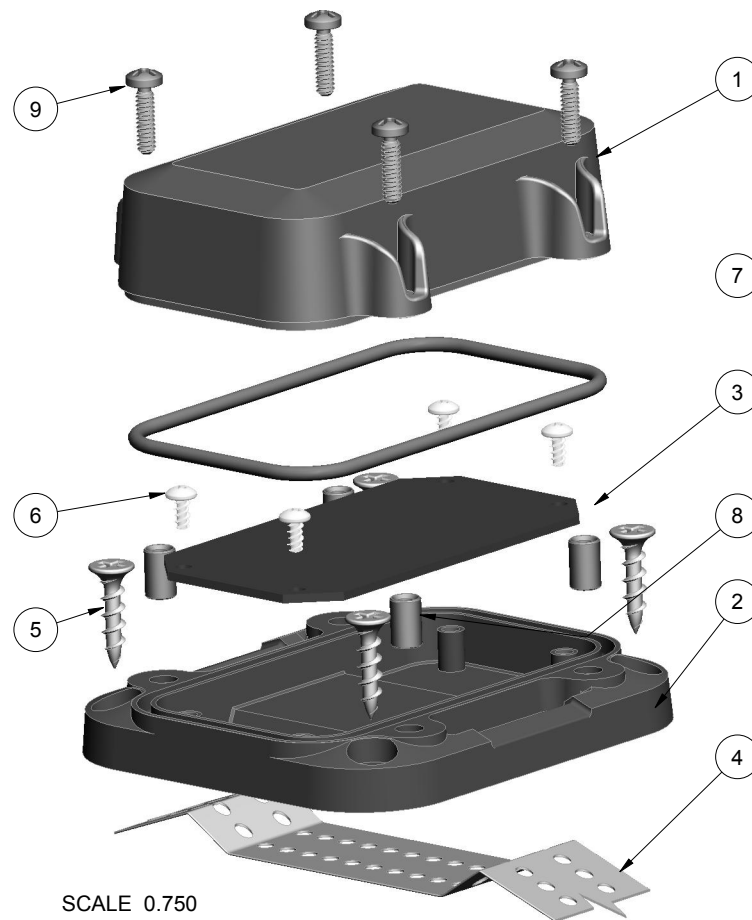


# NOTES: UNLESS OTHERWISE SPECIFIED

- CORNERS DRAWN SHARP TO BE R.010 MAXIMUM.
- EXTERIOR SURFACE TEXTURE TO BE MT-11020, UNLESS SPECIFIED OTHERWISE
- ALL INSIDE RADII .020R. UNLESS OTHERWISE SPECIFIED.
- ALL EXTERNAL DIMENSIONS AFFECTED BY THE DRAFT APPLY AT THE LARGE END OF THE FEATURE, AND ALL INTERNAL FEATURES AFFECTED BY THE DRAFT APPLY AT THE SMALL END OF THE FEATURE UNLESS OTHERWISE SPECIFIED.
- 1 DEGREE DRAFT IN THE DIRECTION OF PULL IS PERMISSIBLE UNLESS OTHERWISE SPECIFIED.
- MATERIAL / COLOR: ENCLOSURE IN ASA PLASTIC IS STANDARD IN BLACK OR GREY. SLIGHT COSMETIC SWIRLING, BLUSHING, AND/OR DISCOLORATION CAN OCCUR IN THIS ENCLOSURE DUE TO UV INHIBITORS IN THE RESIN. CUSTOM MATERIALS AND COLORS ARE AVAILABLE UPON REQUEST FOR QUOTE.
- PCB SIZES ARE RECOMMENDATIONS ONLY. FINAL SIZES AND VERIFICATION OF ITS FIT ARE THE SOLE RESPONSIBILITY OF EACH CUSTOMER.
- ASSEMBLY SCREWS FOR THE ENCLOSURE INCLUDED. MOUNTING SCREWS FOR THE PCB ARE CUSTOMER SUPPLIED.
- THIS DRAWING IS BASED ON A SOLID MODEL, AND IS FURTHER DEFINED BY THE SOLID MODEL FILE.
- ALLOWABLE FLASH: 0.010 MAX.
- ALL EJECTOR PIN MARKS TO BE WITHIN 0.010" OF FLUSH, PROTRUDING OR BELOW FLUSH.
- TRIM GATE WITHIN 0.030" OF FLUSH.
- THIS ENCLOSURE IS CONSTRUCTED FOR INDOOR OR OUTDOOR USE TO PROVIDE A DEGREE OF PROTECTION TO THE EQUIPMENT INSIDE AGAINST THE INGRESS OF SOLID FOREIGN OBJECTS (FALLING DIRT); AND TO PROVIDE A DEGREE OF PROTECTION WITH RESPECT TO TO HARMFUL EFFECTS ON THE EQUIPMENT DUE TO THE INGRESS OF WATER (DRIPPING OR SPLASHING).



R E V I S I O N					
REV.	DRAWN BY	ECO No	DESCRIPTION	DATE	APPROVE
A	M BOYER		PRELIMINARY RELEASE	2018-Apr-16	D.C.
B	R CRUZ		UPDATE NOTE 6 AND ORING, CHANGE PART DESCRIPTION	2018-Aug-02	D.C.
1.0	R CRUZ	03319	UPDATE TO AS-BUILT	2019-Dec-03	



9	6-32_PHILLIPS_SCREW	6-32 PHILLIPS SCREW x .375"	18-8 STAINLESS	S-MS 6-32.375	4
8	6-32X344_BRASS-INSERT	6-32 BRASS INSERT x .344"	TRISTAR 632x344MB	OVER-MOLDED	4
7	353113_ORING	OR-146	SHORE A	INCLUDED	1
6	SCREW_HILO-NO4	#4 HILO SCREW x .250"	ZINC PLATED	CUSTOMER SUPPLIED	4
5	SCREW-DRYWALLX750	DRYWALL SCREW	REFERENCE ONLY	CUSTOMER SUPPLIED	4
4	353113_STRAP	MOUNTING STRAP x 1.000" WIDE	REFERENCE ONLY	CUSTOMER SUPPLIED	1
3	353113_PCB_LOWER	353113 PCB - REFERENCE	.062" THICK	CUSTOMER SUPPLIED	1
2	353113_WALL-BASE	353113 WALL BASE - STANDARD	ASA	BLACK or GREY	1
1	353113_COVER	353113 COVER - STANDARD	ASA	BLACK or GREY	1
ITEM	FILE NAME	DESCRIPTION	MATERIAL	COLOR	QTY.

## BILL OF MATERIALS

THIRD ANGLE PROJECTION  
DO NOT SCALE DRAWING

NOTICE: THE INFORMATION AND DATA CONTAINED HEREIN IS CONSIDERED PROPRIETARY TO ALLTEC INTEGRATED MFG INC & SHALL REMAIN THE EXCLUSIVE PROPERTY OF ALLTEC INTEGRATED MFG INC. THE HOLDER WILL ASSUME CUSTODY AND CONTROL THAT THIS DOCUMENT WILL NOT BE COPIED, REPRODUCED, OR DISCLOSED WITHOUT THE EXPRESS WRITTEN CONSENT OF ALLTEC INTEGRATED MFG INC. NOT CONSTITUTE A GRANT TO MANUFACTURE ANY ITEMS.  
© 2018

TOLERANCES: UNLESS OTHERWISE SPECIFIED  
DIMENSIONS ARE IN U.S. INCHES.  
X.XX = .015 X.XXXX = .001  
X.XXX = .010 X.X" = 1"

NEW AGE ENCLOSURES

Customer's Part No: 353113

APPROVAL	BY	DATE
CHECK		
ENG.		
SCALE	AS NOTED	

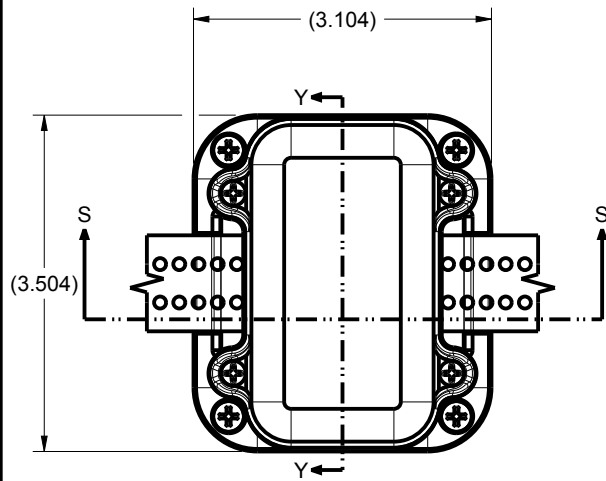
DRAWN BY  
M BOYER  
2018-Apr-16

**NEW AGE ENCLOSURES**  
2240 South Thornburg Street Santa Maria, CA. 93455  
ph. (805) 595-1310 fax (805) 595-1024  
www.newageenclosures.com

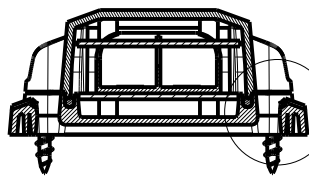
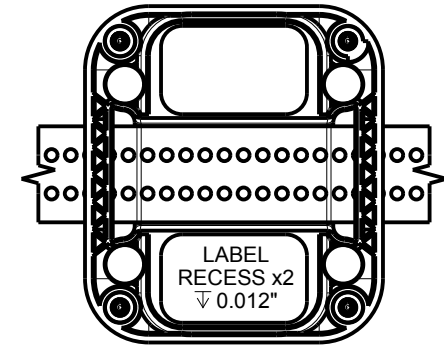
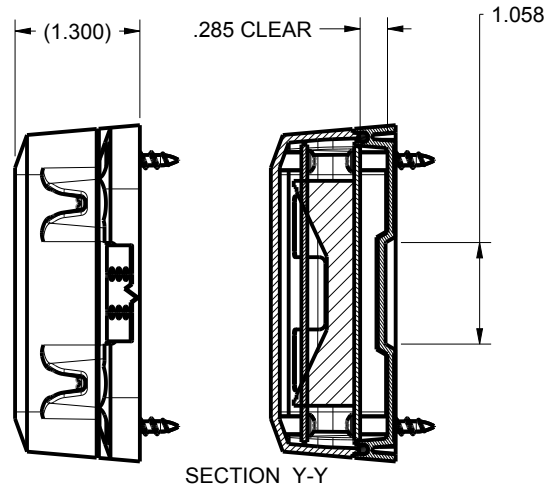
**STANDARD - 2AA NODE  
SXL-353113-XXX**

SIZE	DRAWING NAME	SHEET	REV.DOC
A	353113_R1_0	1 OF 7	1.0

# 353113 ASSEMBLY

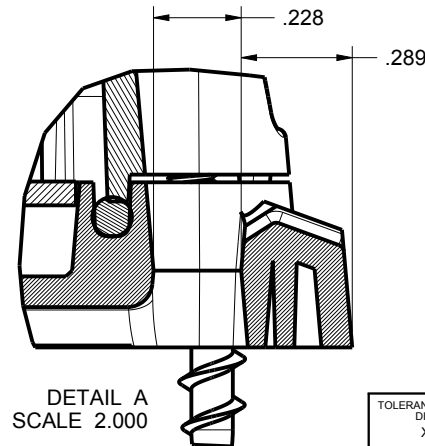


SCALE 0.500

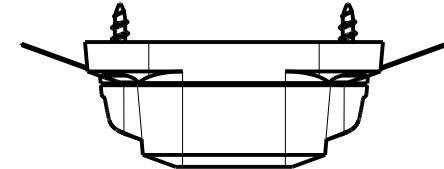


SECTION S-S

SEE DETAIL A



DETAIL A  
SCALE 2.000



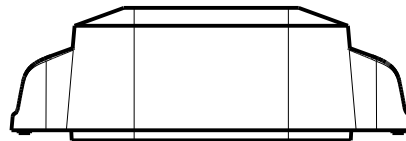
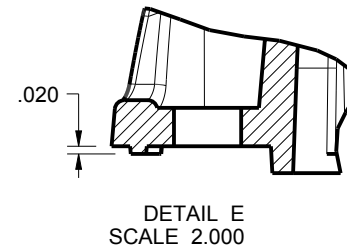
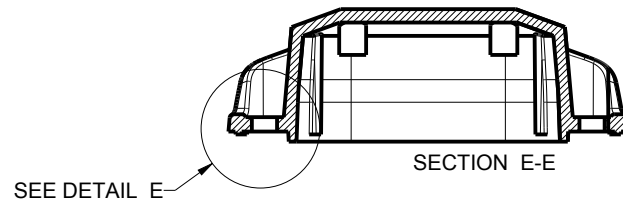
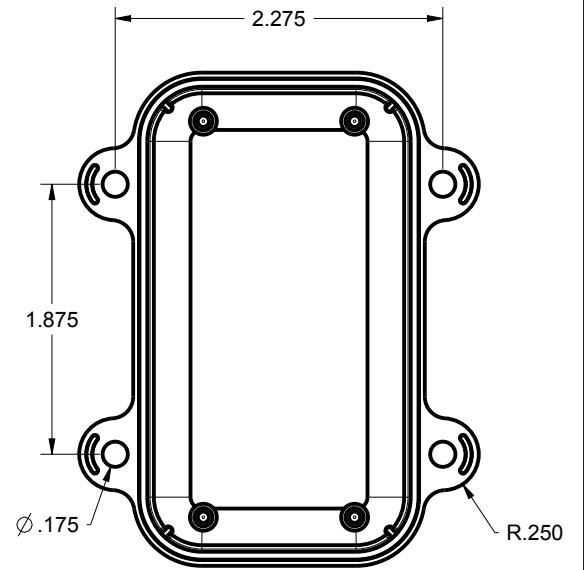
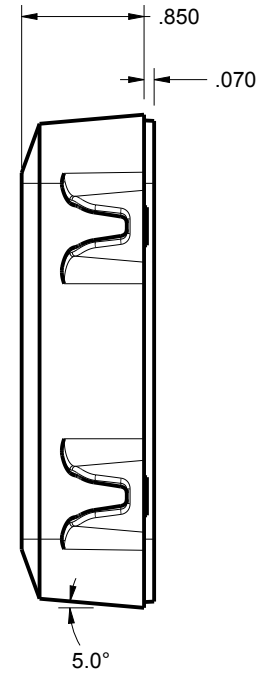
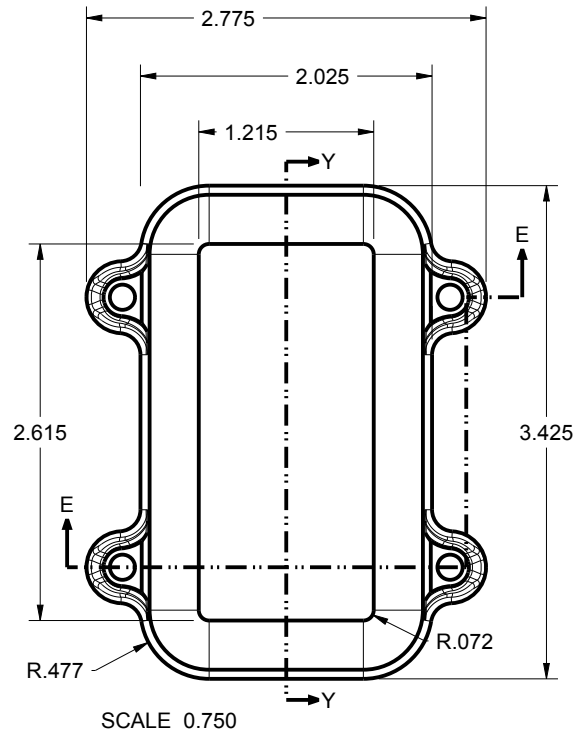
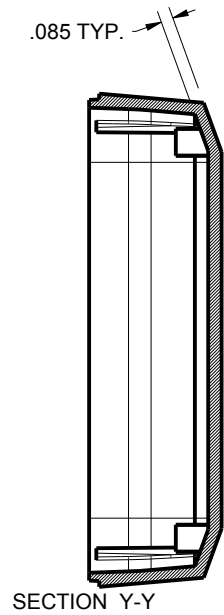
TOLERANCES- UNLESS OTHERWISE SPECIFIED DIMENSIONS ARE IN U.S. INCHES.	
X.XX = .015 X.XXXX = .001	
X.XXX = .010 X.X° = 1°	
NEW AGE ENCLOSURES	
Customer's Part No: 353113	
APPROVAL	BY DATE
CHECK	
ENG.	
SCALE	AS NOTED
DRAWN BY	2018-Apr-16
M BOYER	

<b>NEW AGE ENCLOSURES</b>	
2240 South Thornburg Street ph. (805) 595-1310	Santa Maria, CA. 93455 fax (805) 595-1024
www.newageenclosures.com	

STANDARD - 2AA NODE  
SXL-353113-XXX

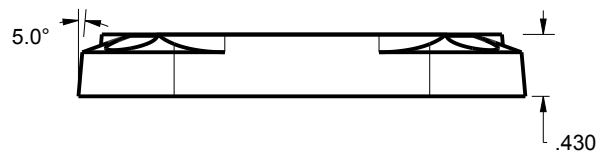
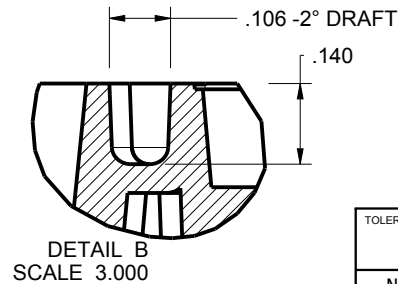
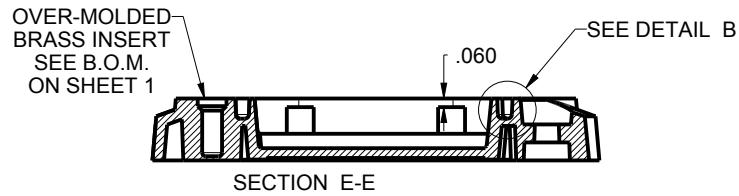
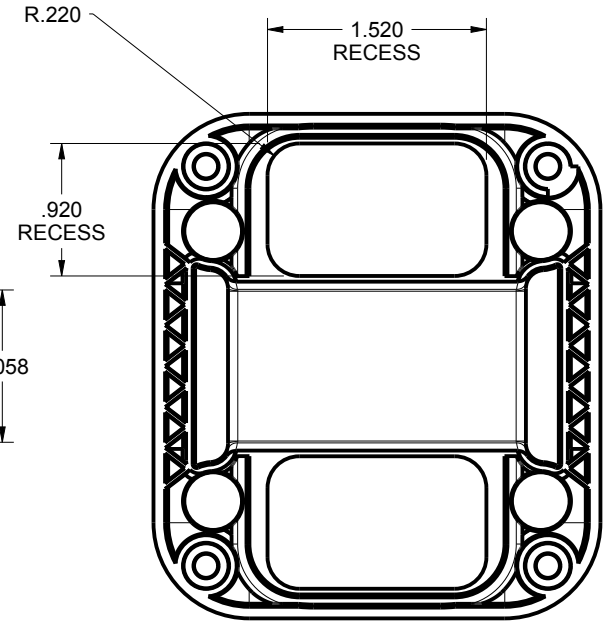
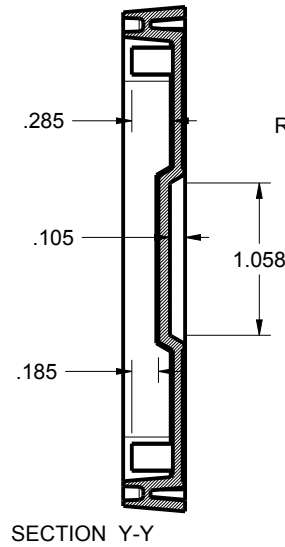
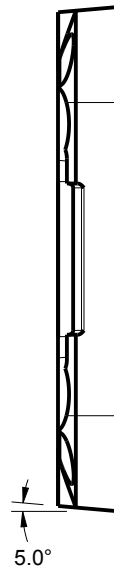
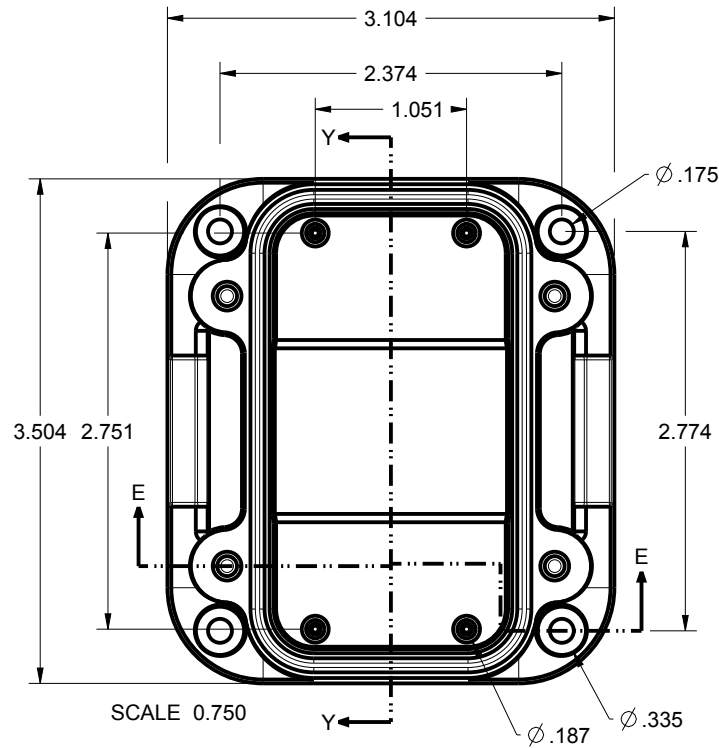
SIZE	DRAWING NAME	SHEET	REV.DOC
A	353113_R1_0	2 OF 7	1.0

# 353113 COVER



TOLERANCES - UNLESS OTHERWISE SPECIFIED DIMENSIONS ARE IN U.S. INCHES. X.XX = .015   X.XXXX = .001 X.XXX = .010   X.X° = 1°			<b>NEW AGE ENCLOSURES</b> 2240 South Thornburg Street   Santa Maria, CA. 93455 ph. (805) 595-1310   fax (805) 595-1024 <a href="http://www.newageenclosures.com">www.newageenclosures.com</a>			
NEW AGE ENCLOSURES						
Customer's Part No:    353113			<b>STANDARD - 2AA NODE</b> <b>SXL-353113-XXX</b>			
APPROVAL	BY	DATE				
CHECK						
ENG.						
SCALE	AS NOTED					
DRAWN BY M BOYER                      2018-Apr-16			SIZE A	DRAWING NAME 353113_R1_0	SHEET 3 OF 7	REV.DOC 1.0

# 353113 WALL BASE



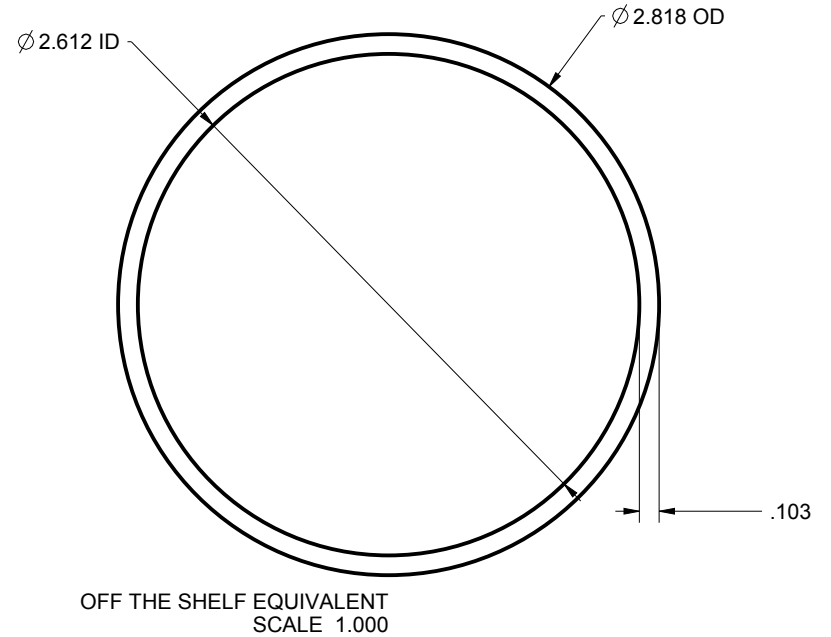
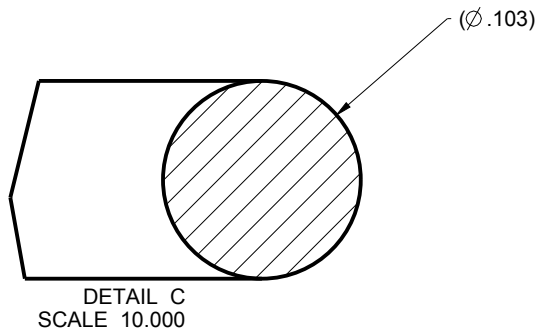
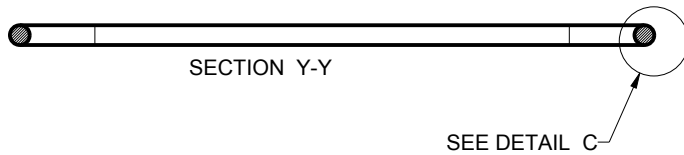
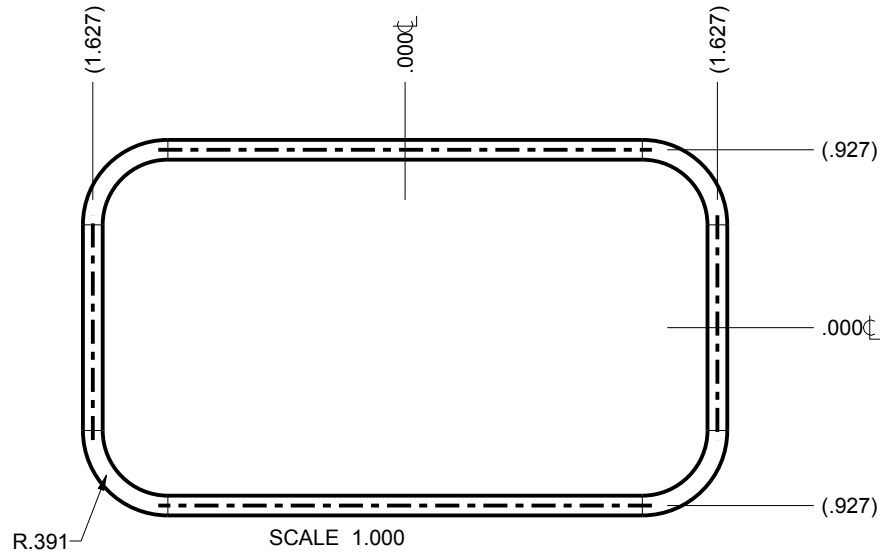
TOLERANCES- UNLESS OTHERWISE SPECIFIED DIMENSIONS ARE IN U.S. INCHES.	
X.XX = .015 X.XXXX = .001	
X.XXX = .010 X.X° = 1°	
NEW AGE ENCLOSURES	
Customer's Part No: 353113	
APPROVAL	BY DATE
CHECK	
ENG.	
SCALE	AS NOTED
DRAWN BY	2018-Apr-16
M BOYER	

**NEW AGE ENCLOSURES**  
 2240 South Thornburg Street Santa Maria, CA. 93455  
 ph. (805) 595-1310 fax (805) 595-1024  
[www.newageenclosures.com](http://www.newageenclosures.com)

**STANDARD - 2AA NODE**  
**SXL-353113-XXX**

SIZE	DRAWING NAME	SHEET	REV.DOC
A	353113_R1_0	4 OF 7	1.0

353113 O-RING  
OR-146 DUROMETER 70A (MEDIUM)  
OR EQUIVALENT



TOLERANCES- UNLESS OTHERWISE SPECIFIED DIMENSIONS ARE IN U.S. INCHES. X.XX = .015 X.XXXX = .001 X.XXX = .010 X.X° = 1°		
NEW AGE ENCLOSURES		
Customer's Part No: 353113		
APPROVAL	BY	DATE
CHECK		
ENG.		
SCALE	AS NOTED	
DRAWN BY	2018-Apr-16	
M BOYER		

<b>NEW AGE ENCLOSURES</b>			
2240 South Thornburg Street ph. (805) 595-1310		Santa Maria, CA. 93455 fax (805) 595-1024 <a href="http://www.newageenclosures.com">www.newageenclosures.com</a>	
<b>STANDARD - 2AA NODE</b> <b>SXL-353113-XXX</b>			
SIZE	DRAWING NAME	SHEET	REV.DOC
<b>A</b>	353113_R1_0	5 OF 7	<b>1.0</b>

Technical drawing of a rectangular plate with chamfered corners and four holes. The drawing includes a top view and a side view.

**Top View Dimensions:**

- Overall Width: 1.532
- Overall Height: 1.532
- Hole Diameter: 4X  $\varnothing$ .120
- Hole Offset from Corners: 2X 1.375
- Chamfer Size: CHAMFER .300
- Scale: SCALE 1.000

**Side View Dimensions:**

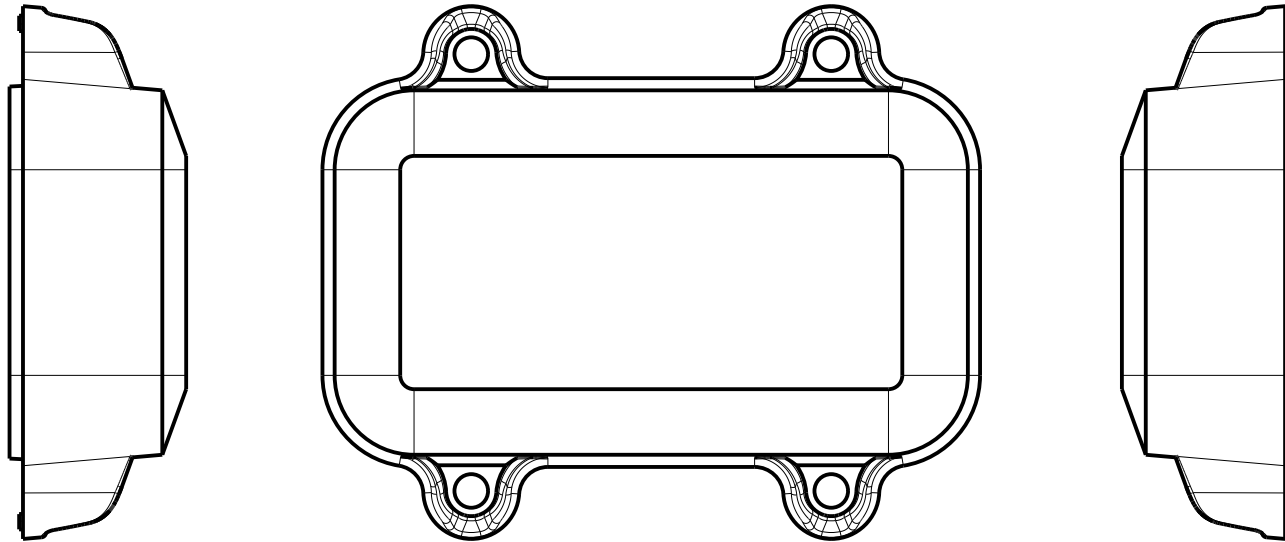
- Thickness: .062

TOLERANCES: UNLESS OTHERWISE SPECIFIED DIMENSIONS ARE IN U.S. INCHES. X.XX = .015 X.XXXX = .001 X.XXX = .010 X.X° = 1°			<b>NEW AGE ENCLOSURES</b> 2240 South Thornburg Street ph. (805) 595-1310 Santa Maria, CA. 93455 fax (805) 595-1024 <a href="http://www.newageenclosures.com">www.newageenclosures.com</a>			
NEW AGE ENCLOSURES			<b>STANDARD - 2AA NODE</b> <b>SXL-353113-XXX</b>			
Customer's Part No: 353113						
APPROVAL	BY	DATE				
CHECK						
ENG.						
SCALE	AS NOTED					
DRAWN BY M BOYER 2018-Apr-16			SIZE A	DRAWING NAME 353113_R1_0	SHEET 6 OF 7	REV.DOC 1.0

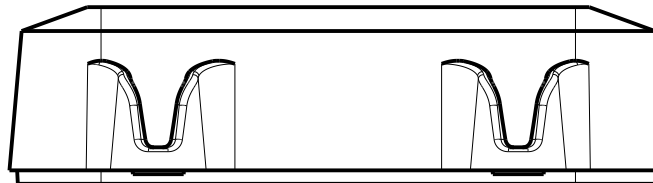


# 353113 - 2nd OPERATION DETAILS

NEW AGE ENCLOSURES DELIVERS YOUR ENCLOSURE MARKET-READY WITH IN-HOUSE  
CNC MACHINING, PAD PRINTING, ASSEMBLY, AND FULFILLMENT.  
ALL SURFACES AND AREAS ARE AVAILABLE FOR CNC ALTERATION BY NEW AGE ENCLOSURES  
CALL (805) 595-1310 FOR PRICING AND SCHEDULE.  
THE INSIDE RADIUS OF ANY MACHINED FEATURES SHOULD BE NO SMALLER THAN .031"



35113 COVER  
SCALE 1.000



## SXL-353113-XXX COVER - ASA, BLACK

STEP NO	DESCRIPTION	CUTTER	FIXTURE	ORIENTATION	PROGRAM
1-C-C1	-	T2 = .062" EM	391	-	-
2-C-C2	-	T2 = .062" EM	391	-	-
3-C-C3	-	T2 = .062" EM	391	-	-

## SXL-353113-XXX COVER - ASA, BLACK

STEP	TYPE	FIXTURE	INK COLOR	CLICHE DESCRIPTION	CLICHE No.
4-C-P1	PAD PRINT	390	WHITE	LOGO AND LABELS	CLXXXXn R1

TOLERANCES- UNLESS OTHERWISE SPECIFIED  
DIMENSIONS ARE IN U.S. INCHES.

X.XX = .015 X.XXXX = .001  
X.XXX = .010 X.X° = 1°

NEW AGE ENCLOSURES

Customer's Part No: 353113

APPROVAL BY DATE

CHECK

ENG.

SCALE AS NOTED

DRAWN BY M BOYER

2018-Apr-16

**NEW AGE  
ENCLOSURES**

2240 South Thornburg Street Santa Maria, CA. 93455  
ph. (805) 595-1310 fax (805) 595-1024

www.newageenclosures.com

**STANDARD - 2AA NODE  
SXL-353113-XXX**

SIZE A DRAWING NAME 353113\_R1\_0 SHEET 7 OF 7 REV.DOC 1.0

# Mouser Electronics

Authorized Distributor

Click to View Pricing, Inventory, Delivery & Lifecycle Information:

New Age Enclosures:

[S6L-353113](#) [S3L-353113](#)