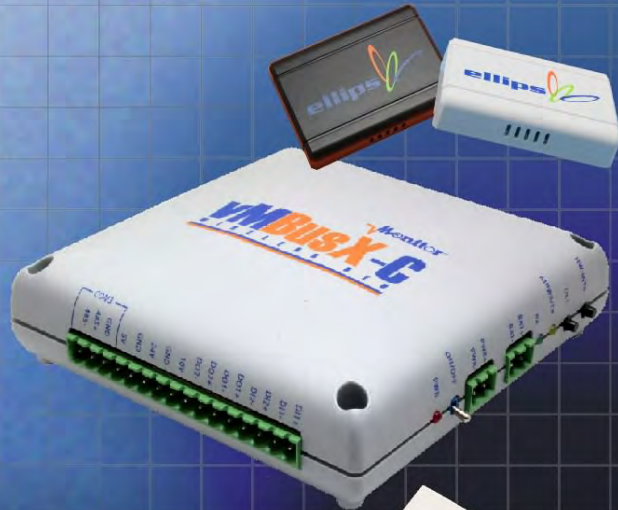




Ordering a market-ready enclosure® is made fast and affordable with our complete in-house capabilities. New Age provides machined openings to fit your PCB, pad printing for your graphics, custom enclosures, custom colors, final assembly, testing and fulfillment services to save you additional time and money. Ask your representative for a free quote today 805-595-1310.

## ***Fast and Affordable Customization***

**CNC Modifications  
Pad Printing  
Colored Resins  
EMI/RF Shielding  
Custom Enclosure  
Assembly & Testing**



ISO quality  
off-the-shelf  
to market-ready®

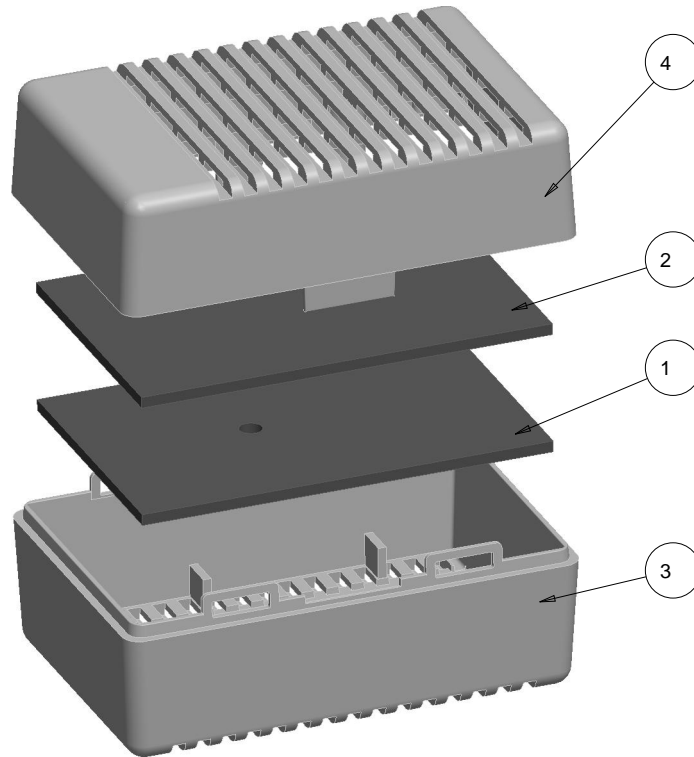
# **NEW AGE ENCLOSURES**

[www.NewAgeEnclosures.com](http://www.NewAgeEnclosures.com)

4330 Santa Fe Road • San Luis Obispo, CA 93401 • T 805.595.1310 • F 805.595.1024




R E V I S I O N					
REV.	DRAWN BY	ECO No	DESCRIPTION	DATE	APPROVED
1	M BOYER		PRELIMINARY RELEASE	28-Feb-09	D.C.
1.1	M BOYER	0710	UPDATE FORMAT	25-Mar-10	



EXPLODED VIEW  
SCALE 1.000

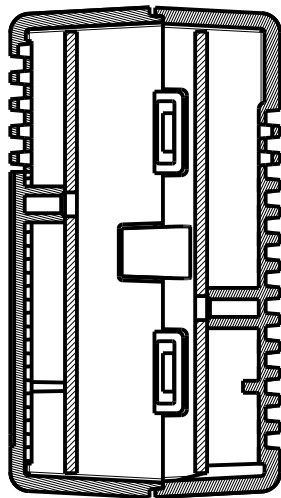
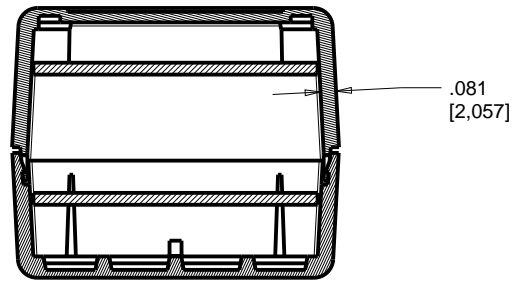
#### NOTES: UNLESS OTHERWISE SPECIFIED

- CORNERS DRAWN SHARP TO BE R.005 MAXIMUM.
- EXTERIOR SURFACE TEXTURE TO BE LIGHT EDM FINISH. EQUIVELANT TO MT-11010.
- INTERIOR SURFACE TEXTURE TO BE: NONE.
- ALL INSIDE RADII .010R. ALL OUTSIDE RADII .020R MAX, UNLESS OTHERWISE SPECIFIED.
- ALL EXTERNAL DIMENSIONS AFFECTED BY THE DRAFT APPLY AT THE LARGE END OF THE FEATURE, AND ALL INTERNAL FEATURES AFFECTED BY THE DRAFT APPLY AT THE SMALL END OF THE FEATURE UNLESS OTHERWISE SPECIFIED.
- 1 DEGREE DRAFT IN THE DIRECTION OF PULL IS PERMISSIBLE UNLESS OTHERWISE SPECIFIED.
- MATERIAL / COLOR: ABS PLASTIC IS STANDARD IN BLACK OR WHITE. CUSTOM MATERIALS AND/OR COLORS ARE AVAILABLE UPON REQUEST FOR QUOTE.
- PCB SIZES ARE RECOMMENDATIONS ONLY. FINAL SIZES AND VERIFICATION OF IT'S FIT ARE THE SOLE RESPONSIBILITY OF EACH OWNER.
- STANDARD OR CUSTOM LABEL RECESSES ARE AVAILABLE UPON REQUEST FOR QUOTE.
- THIS ENCLOSURE IS A PRESS FIT ASSEMBLY. FOR PERMANENT CLOSURE: A DROP OF ADHESIVE OR ULTRASONIC WELDING IS REQUIRED.

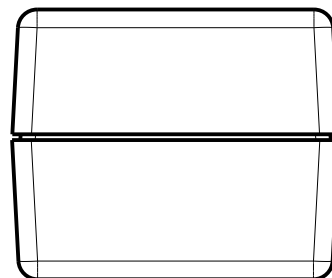
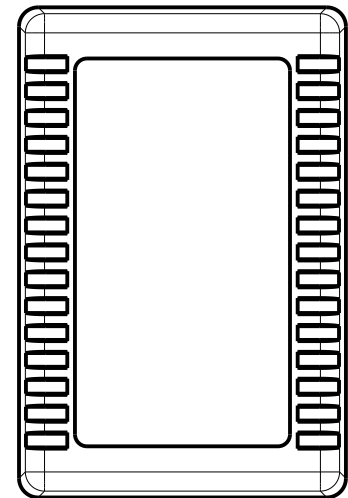
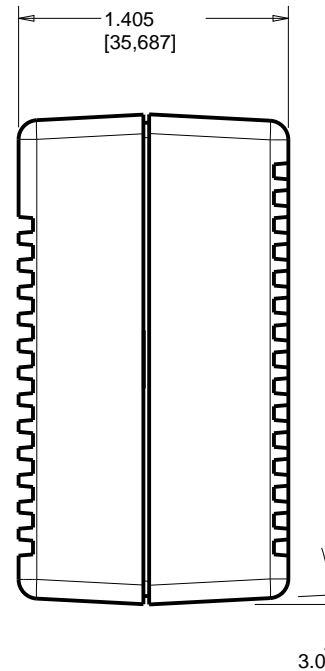
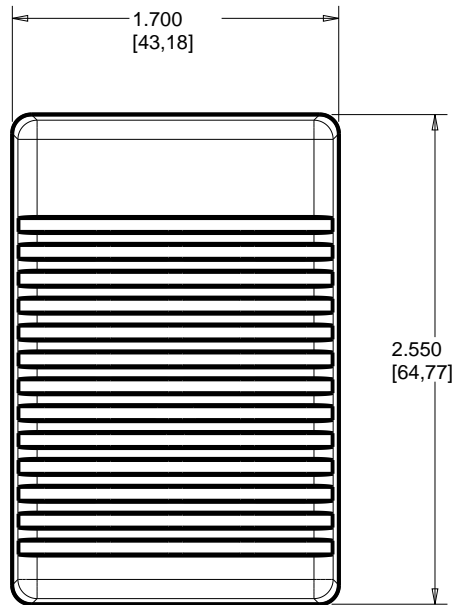
<div><div>THIRD ANGLE PROJECTION</div><div></div><div>DO NOT SCALE DRAWING</div></div>						<div>TOLERANCES: UNLESS OTHERWISE SPECIFIED DIMENSIONS ARE IN U.S. INCHES. X.XX = .015 X.XXXX = .001 X.XXX = .010 X.X° = 1°</div> <div>NEW AGE ENCLOSURES</div>		<div><div>NEW AGE ENCLOSURES</div><div>4330 Santa Fe Road San Luis Obispo, CA. 93401 ph. (805) 595-1310 fax (805) 595-1024 www.newageenclosures.com</div></div>			
<div>NOTICE: THE INFORMATION AND DATA CONTAINED HEREIN IS CONSIDERED PROPRIETARY TO ALTEC INTEGRATED MFG INC &amp; SHALL REMAIN THE EXCLUSIVE PROPERTY OF ALTEC INTEGRATED MFG INC. THE HOLDER WILL ASSUME CUSTODY AND CONTROL THAT THIS DOCUMENT WILL NOT BE COPIED, REPRODUCED, OR DISCLOSED WITHOUT THE EXPRESS WRITTEN CONSENT OF ALTEC INTEGRATED MFG INC. POSSESSION OF THIS DOCUMENT DOES NOT CONSTITUTE A GRANT TO MANUFACTURE ANY ITEMS. © 2010</div>						<div>Customer's Part No: 251714</div>					
<div>4</div> <div>251714_COVER</div> <div>251714 COVER - STANDARD</div> <div>ABS</div> <div>BLACK-WHITE</div> <div>1</div>						<div>APPROVAL</div> <div>CHECK</div> <div>ENG.</div> <div>SCALE</div>		<div>BY</div> <div>DATE</div>			
<div>3</div> <div>251714_BASE</div> <div>251714 BASE - STANDARD</div> <div>ABS</div> <div>BLACK-WHITE</div> <div>1</div>											
<div>2</div> <div>251714_COVER-PCB</div> <div>251714 PCB - REFERENCE</div> <div>CUSTOMER SUPPLIED</div> <div>.062" THICK</div> <div>1</div>											
<div>1</div> <div>251714_BASE-PCB</div> <div>251714 PCB - REFERENCE</div> <div>CUSTOMER SUPPLIED</div> <div>.062" THICK</div> <div>1</div>											
<div>ITEM</div> <div>FILE NAME</div> <div>DESCRIPTION</div> <div>MATERIAL</div> <div>COLOR</div> <div>QTY.</div>											
<div>BILL OF MATERIALS</div>						<div>DRAWN BY</div> <div>M BOYER</div> <div>28-Feb-09</div>		<div>SIZE</div> <div>A</div>	<div>DRAWING NAME</div> <div>251714_R1_1</div>	<div>SHEET</div> <div>1 OF 6</div>	<div>REV.DOC</div> <div>1.1</div>

NOTICE: THE INFORMATION AND DATA  
CONTAINED HEREIN IS CONSIDERED  
PROPRIETARY TO ALTEC INTEGRATED  
MFG INC & SHALL REMAIN THE EXCLUSIVE  
PROPERTY OF ALTEC INTEGRATED MFG INC  
THE HOLDER WILL ASSUME CUSTODY AND  
CONTROL THAT THIS DOCUMENT WILL  
NOT BE COPIED, REPRODUCED, OR  
DISCLOSED WITHOUT THE EXPRESS WRITTEN  
CONSENT OF ALTEC INTEGRATED MFG INC  
POSSESSION OF THIS DOCUMENT DOES  
NOT CONSTITUTE A GRANT TO  
MANUFACTURE ANY ITEMS.  
© 2010

SECTION B-B

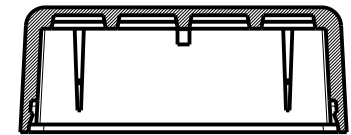
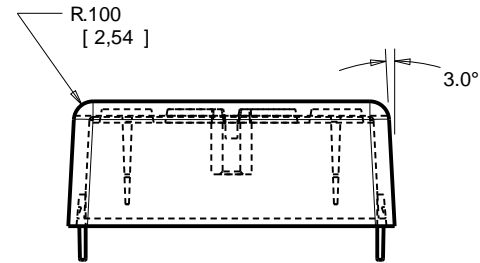
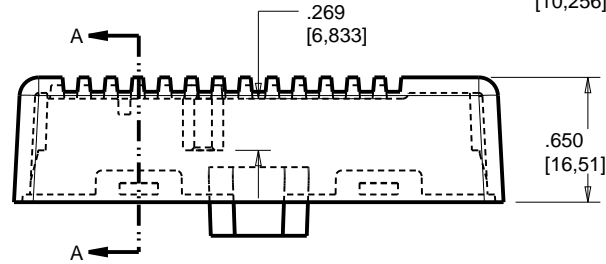
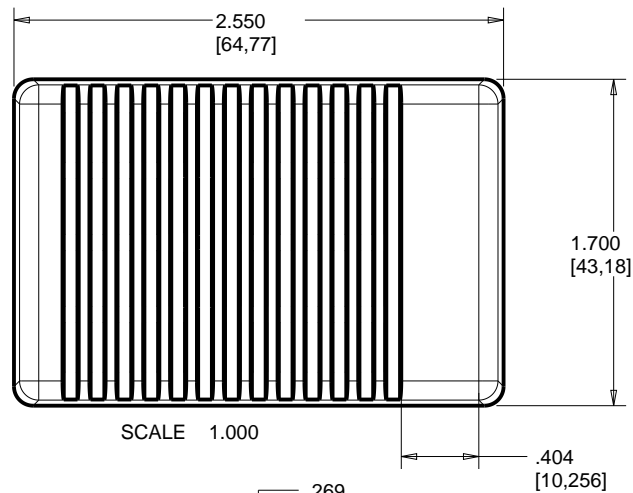


SECTION A-A

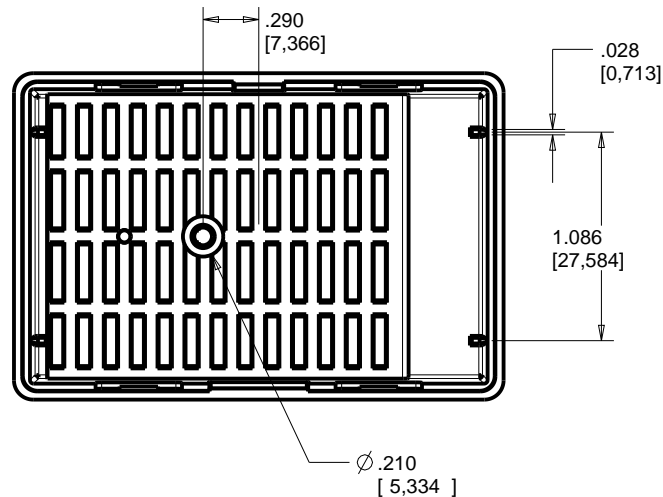


TOLERANCES: UNLESS OTHERWISE SPECIFIED DIMENSIONS ARE IN U.S. INCHES. X.XX = .015    X.XXXX = .001 X.XXX = .010    X.X° = 1°				<b>NEW AGE ENCLOSURES</b> 4330 Santa Fe Road    San Luis Obispo, CA. 93401 ph. (805) 595-1310    fax (805) 595-1024 <a href="http://www.newageenclosures.com">www.newageenclosures.com</a>				
Customer's Part No: 251714								
APPROVAL	BY	DATE			<b>STANDARD - VENTED CASE</b> <b>PXX-251714 ASSEMBLY</b>			
CHECK								
ENG.								
SCALE								
DRAWN BY M BOYER			28-Feb-09		SIZE A	DRAWING NAME 251714_R1_1	SHEET 2 OF 6	REV.DOC 1.1

# 251714 COVER

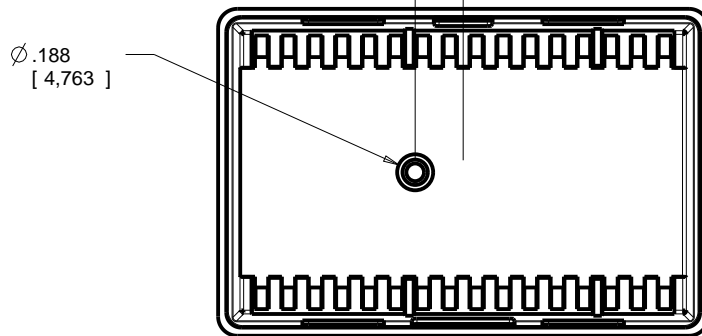
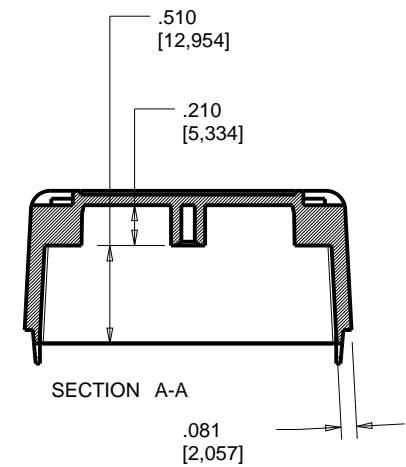
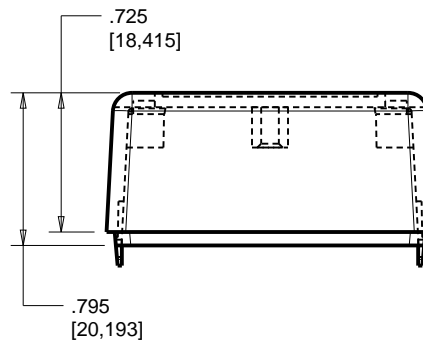
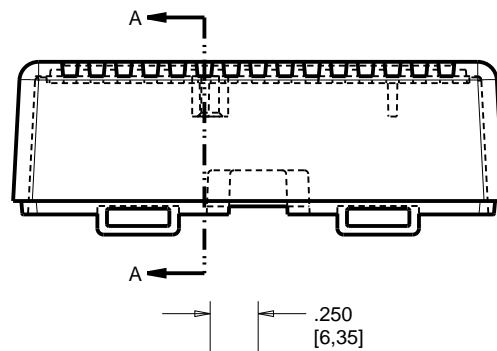
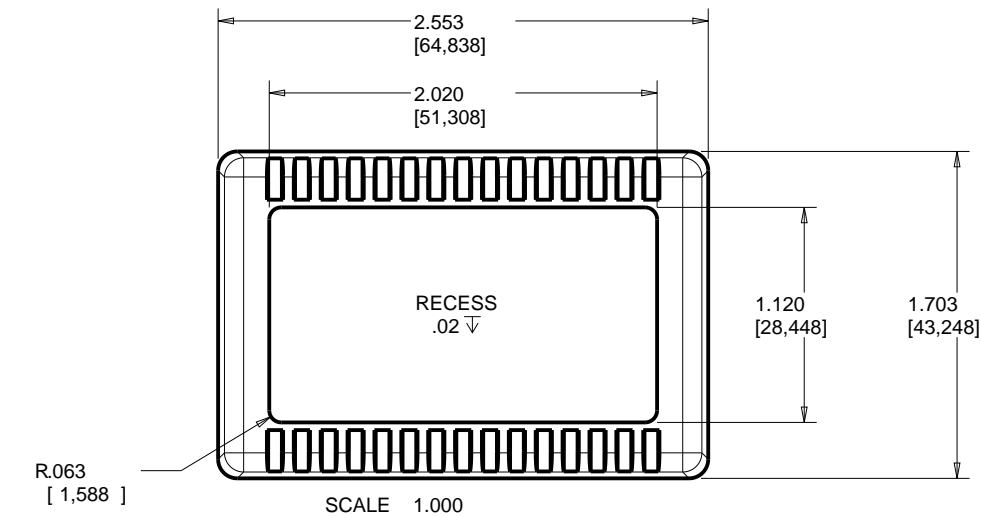


SECTION A-A



TOLERANCES: UNLESS OTHERWISE SPECIFIED DIMENSIONS ARE IN U.S. INCHES. X.XX = .015   X.XXXX = .001 X.XXX = .010   X.X° = 1°			<b>NEW AGE ENCLOSURES</b> 4330 Santa Fe Road   San Luis Obispo, CA. 93401 ph. (805) 595-1310   fax (805) 595-1024 <a href="http://www.newageenclosures.com">www.newageenclosures.com</a>			
<b>NEW AGE ENCLOSURES</b>						
Customer's Part No:    251714			<b>STANDARD - VENTED CASE</b> <b>PXX-251714 ASSEMBLY</b>			
APPROVAL	BY	DATE				
CHECK						
ENG.						
SCALE						
DRAWN BY M BOYER                      28-Feb-09			SIZE A	DRAWING NAME 251714_R1_1	SHEET 3 OF 6	REV.DOC 1.1

# 251714 BASE



TOLERANCES: UNLESS OTHERWISE SPECIFIED DIMENSIONS ARE IN U.S. INCHES.			
X.XX = .015 X.XXXX = .001			
X.XXX = .010 X.X° = 1°			
NEW AGE ENCLOSURES			
Customer's Part No: 251714			
APPROVAL	BY	DATE	
CHECK			
ENG.			
SCALE			
DRAWN BY	28-Feb-09		
M BOYER			
SIZE	A		
DRAWING NAME	251714_R1_1		
SHEET	4 OF 6		
REV.DOC	1.1		

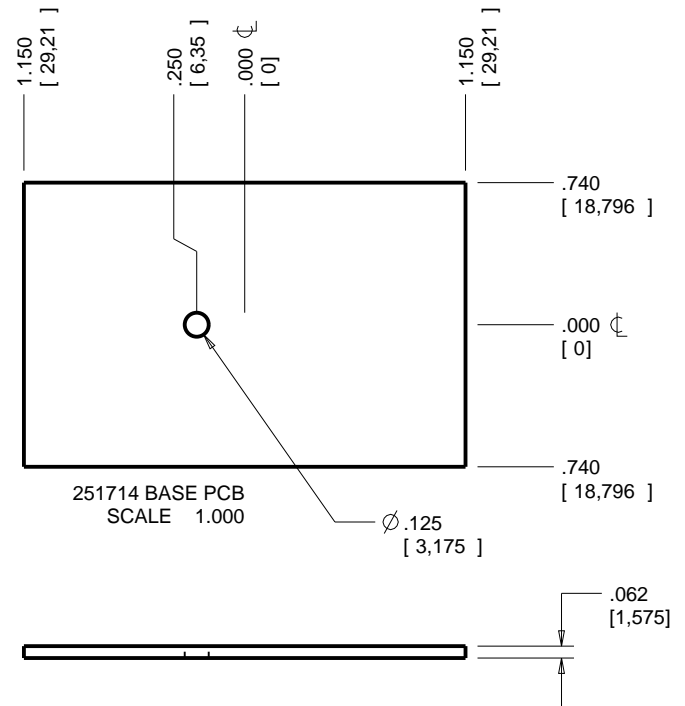
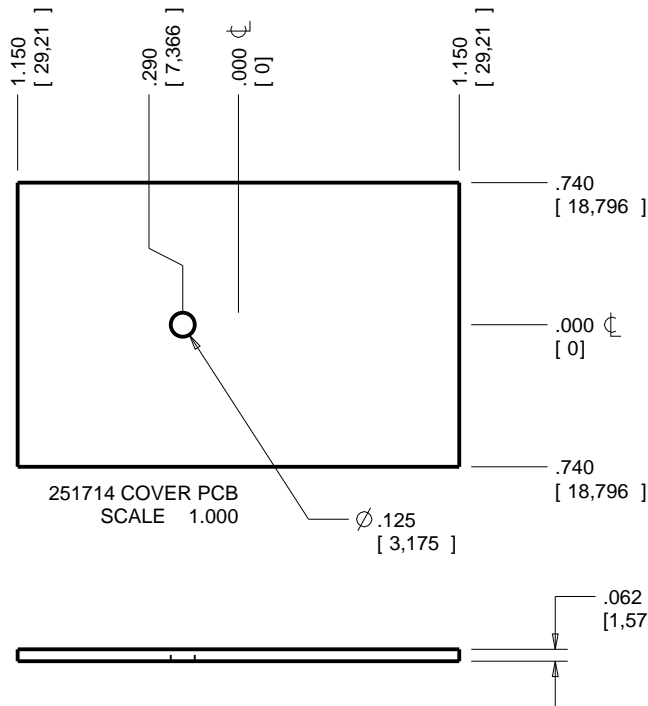
**NEW AGE ENCLOSURES**

4330 Santa Fe Road San Luis Obispo, CA. 93401  
ph. (805) 595-1310 fax (805) 595-1024  
[www.newageenclosures.com](http://www.newageenclosures.com)

**STANDARD - VENTED CASE  
PXX-251714 ASSEMBLY**

# 251714 PCB - CUSTOMER SUPPLIED

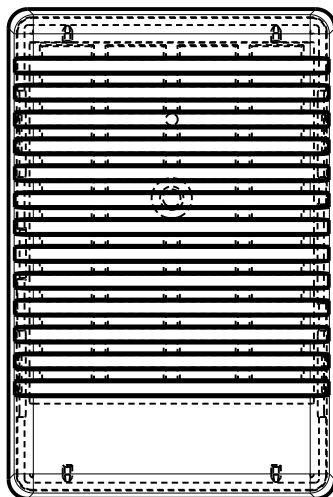
PCB SIZES ARE RECOMMENDATIONS ONLY. FINAL  
SIZES AND VERIFICATION OF IT'S FIT ARE THE  
SOLE RESPONSIBILITY OF THE OEM.



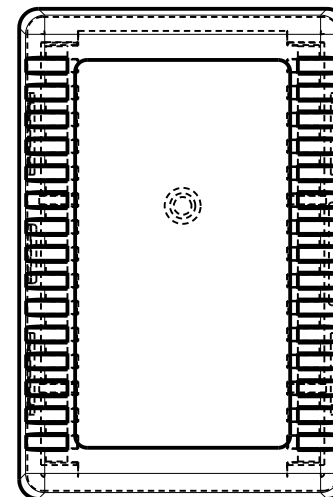
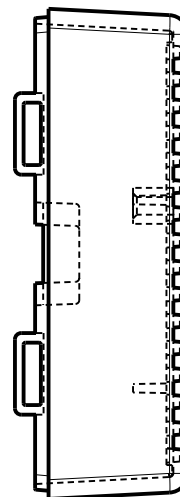
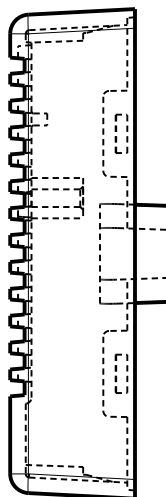
TOLERANCES: UNLESS OTHERWISE SPECIFIED DIMENSIONS ARE IN U.S. INCHES. X.XX = .015 X.XXXX = .001 X.XXX = .010 X.X° = 1°		<b>NEW AGE ENCLOSURES</b> 4330 Santa Fe Road San Luis Obispo, CA. 93401 ph. (805) 595-1310 fax (805) 595-1024 <a href="http://www.newageenclosures.com">www.newageenclosures.com</a>	
Customer's Part No: 251714			
APPROVAL	BY	DATE	<b>STANDARD - VENTED CASE</b> <b>PXX-251714 ASSEMBLY</b>
CHECK			
ENG.			
SCALE			
DRAWN BY M BOYER		28-Feb-09	SIZE A DRAWING NAME 251714_R1_1 SHEET 5 OF 6 REV.DOC 1.1

## 2nd OPERATION DETAILS

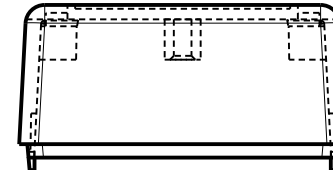
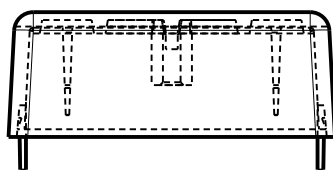
NEW AGE ENCLOSURES DELIVERS YOUR ENCLOSURE MARKET-READY WITH IN-HOUSE  
CNC MACHINING, PAD PRINTING, ASSEMBLY, AND FULFILLMENT.  
ALL SURFACES AND AREAS ARE AVAILABLE FOR CNC ALTERATION BY NEW AGE ENCLOSURES  
CALL (805) 595-1310 FOR PRICING AND SCHEDULE.  
THE INSIDE RADIUS OF ANY MACHINED FEATURES SHOULD BE NO SMALLER THAN .031"



251714 COVER  
SCALE 1.000



251714 BASE  
SCALE 1.000



### PXX-251714-XXX COVER - ABS, BLACK

STEP NO	DESCRIPTION	CUTTER	FIXTURE	ORIENTATION	PROGRAM
1	-	T2 = .062" EM	-	-	-
2	-	T2 = .062" EM	-	-	-
3	-	T2 = .062" EM	-	-	-

### PXX-251714-XXX BASE - ABS, BLACK

STEP NO	DESCRIPTION	CUTTER	FIXTURE	ORIENTATION	PROGRAM
4	-	T2 = .062" EM	-	-	-
5	-	T2 = .062" EM	-	-	-
6	-	T2 = .062" EM	-	-	-

TOLERANCES: UNLESS OTHERWISE SPECIFIED  
DIMENSIONS ARE IN U.S. INCHES.

X.XX = .015 X.XXXX = .001  
X.XXX = .010 X.X° = 1°

NEW AGE ENCLOSURES

Customer's Part No: 251714

APPROVAL BY DATE

CHECK

ENG.

SCALE

DRAWN BY M BOYER

28-Feb-09

**NEW AGE ENCLOSURES**

4330 Santa Fe Road San Luis Obispo, CA. 93401  
ph. (805) 595-1310 fax (805) 595-1024

[www.newageenclosures.com](http://www.newageenclosures.com)

**STANDARD - VENTED CASE  
PXX-251714 ASSEMBLY**

SIZE A

DRAWING NAME  
251714\_R1\_1

SHEET  
6 OF 6

REV.DOC  
1.1



# Mouser Electronics

Authorized Distributor

Click to View Pricing, Inventory, Delivery & Lifecycle Information:

New Age Enclosures:

[P1A-251714](#) [P3A-251714](#)