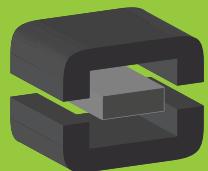


From Off-The-Shelf to Market-Ready© New Age Enclosures is your Single Source Solution.
Let us quote modifying our Stock Enclosures to meet your end-use.
visit newageenclosures.com/services or call 855-4NA-ENCL today.

CNC CUTOUTS
PART DECORATING
CUSTOM COLOR AND MATERIAL
RF/EMI SHIELDING
CUSTOM TOOL INSERTS
CUSTOM ENCLOSURES AND DESIGN

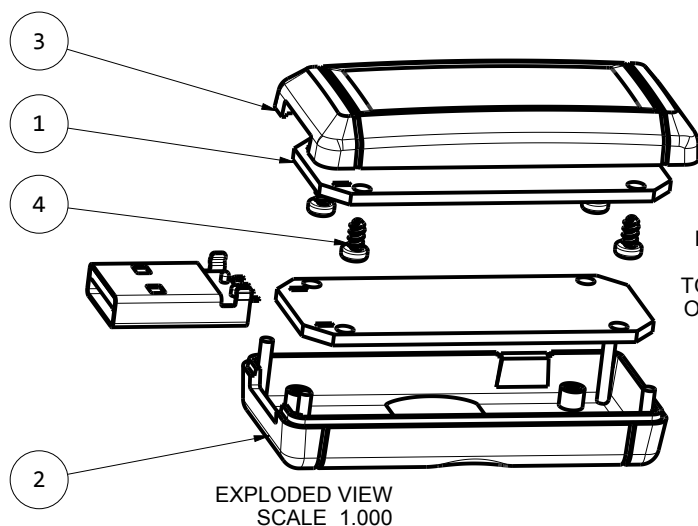


NEW AGE
ENCLOSURES
DEVELOP THE FUTURE



210906(x) CONFIGURATIONS		
	-S	-U
210906 COVER	1	
210906 COVER w/ USB		1
210906 BASE	1	
210906 BASE w/ USB		1

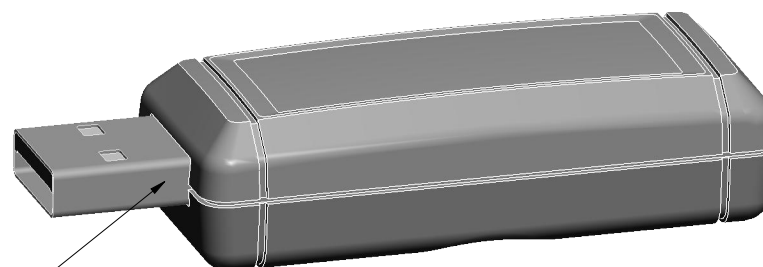
4	M2 SCREW x 4mm - REFERENCE	CUSTOMER SUPPLIED	REFERENCE ONLY	4
3	210906 COVER - STANDARD	ABS	BLACK or WHITE	1
2	210906 BASE - STANDARD	ABS	BLACK or WHITE	1
1	210906 PCB - REFERENCE	CUSTOMER SUPPLIED	.062" THICK	2
ITEM	DESCRIPTION	MATERIAL	COLOR	QTY.
BILL OF MATERIALS				



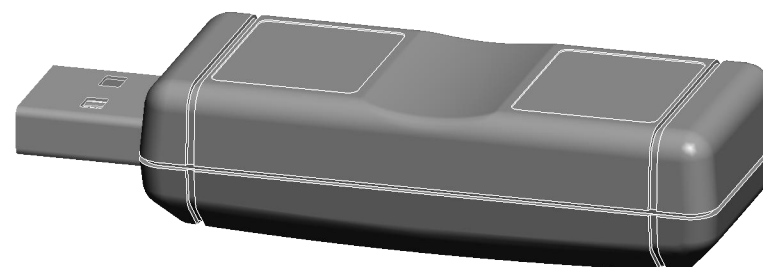
NOTES: UNLESS OTHERWISE SPECIFIED

- CORNERS DRAWN SHARP TO BE R.005 MAXIMUM.
- EXTERIOR SURFACE TEXTURE TO BE LIGHT EDM FINISH. EQUIVALENT TO MT-11010. TEXTURE ON ENCLOSURE WILL VARY FROM TIME TO TIME AS THE TOOL WEARS AND IT BECOMES NECESSARY TO REAPPLY.
- INTERIOR SURFACE TEXTURE: NONE
- ALL INSIDE RADII .010R. UNLESS OTHERWISE SPECIFIED.
- ALL EXTERNAL DIMENSIONS AFFECTED BY THE DRAFT APPLY AT THE LARGE END OF THE FEATURE, AND ALL INTERNAL FEATURES AFFECTED BY THE DRAFT APPLY AT THE SMALL END OF THE FEATURE UNLESS OTHERWISE SPECIFIED.
- 1 DEGREE DRAFT IN THE DIRECTION OF PULL IS PERMISSIBLE UNLESS OTHERWISE SPECIFIED.
- THIS ENCLOSURE IS A PRESS FIT ASSEMBLY. FOR PERMANENT CLOSURE: A DROP OF ADHESIVE OR ULTRASONIC WELDING IS REQUIRED.
- MOUNTING SCREWS FOR THE PCB ARE CUSTOMER SUPPLIED.
- MATERIAL / COLOR: ABS PLASTIC IS STANDARD IN BLACK OR WHITE. CUSTOM MATERIALS AND COLORS ARE AVAILABLE UPON REQUEST FOR QUOTE. ALTERNATE RESINS HAVE DIFFERENT SHRINK RATES, AND WILL EFFECT DIMENSIONS.
- PCB SIZES ARE RECOMMENDATIONS ONLY. FINAL SIZES AND VERIFICATION OF ITS FIT ARE THE SOLE RESPONSIBILITY OF EACH CUSTOMER.

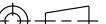
R E V I S I O N					
REV.	DRAWN BY	ECO No	DESCRIPTION	DATE	APPROVE
A	M BOYER		PRELIMINARY RELEASE	2019-Nov-06	D.C.
B	M BOYER		CENTER DESIGN AND ADD END RINGS	2020-Jun-19	D.C.
C	M BOYER		UPDATE NOTES AND CLARIFY PCB	2020-Jun-24	D.C.
1.0	R CRUZ	02120	UPDATE TO AS-BUILT AND RELEASE	2020-Oct-14	

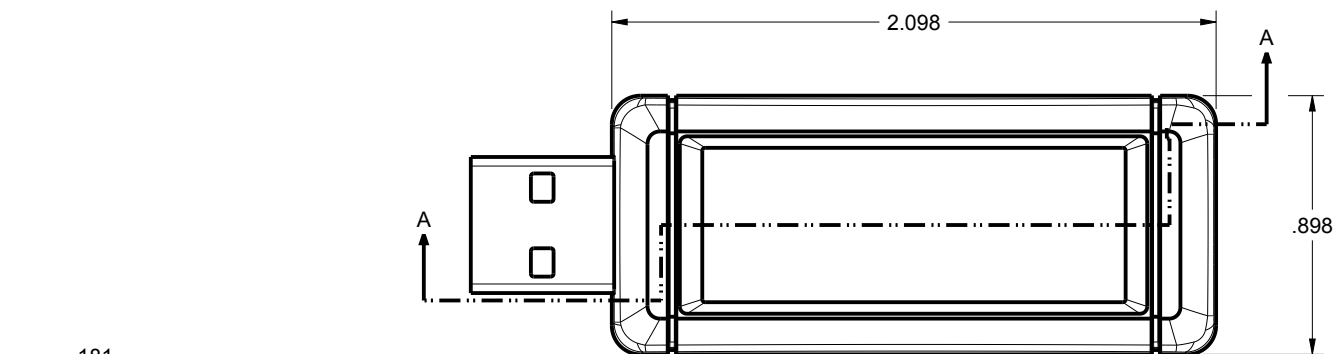


SCALE 1.500

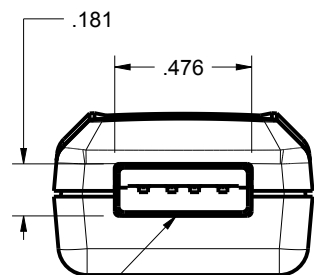


SCALE 1.500

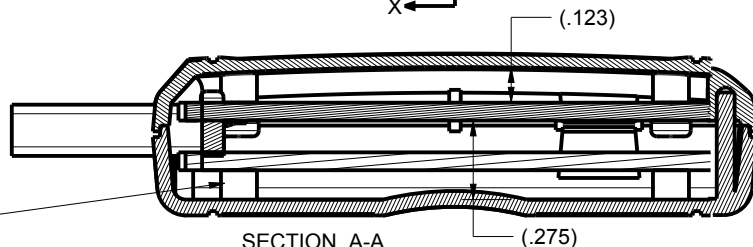
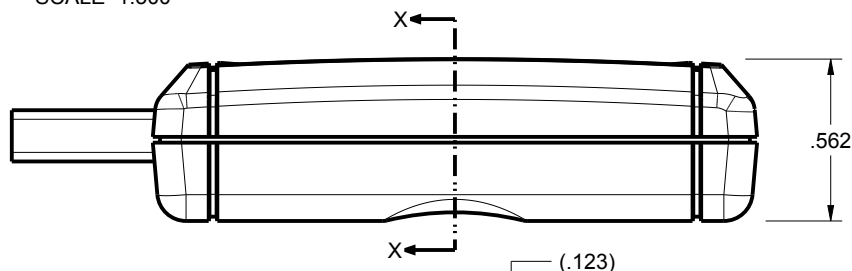
THIRD ANGLE PROJECTION  DO NOT SCALE DRAWING	TOLERANCES: UNLESS OTHERWISE SPECIFIED DIMENSIONS ARE IN U.S. INCHES. X.XX = .015 X.XXXX = .001 X.XXX = .010 X.X" = 1"		<div>NEW AGE ENCLOSURES</div> <div>2240 South Thornburg Street ph. (805) 595-1310</div> <div>Santa Maria, CA. 93455 fax (805) 595-1024</div> <div>www.newageenclosures.com</div>	
	NEW AGE ENCLOSURES			
NOTICE: THE INFORMATION AND DATA CONTAINED HEREIN IS CONSIDERED PROPRIETARY TO ALLTEC INTEGRATED MFG INC & SHALL REMAIN THE EXCLUSIVE PROPERTY OF ALLTEC INTEGRATED MFG INC. THE HOLDER WILL ASSUME CUSTODY AND CONTROL THAT THIS DOCUMENT WILL NOT BE COPIED, REPRODUCED, OR DISCLOSED WITHOUT THE EXPRESS WRITTEN CONSENT OF ALLTEC INTEGRATED MFG INC. POSSESSION OF THIS DOCUMENT DOES NOT CONSTITUTE A GRANT TO MANUFACTURE ANY ITEMS. © 2020	Customer's Part No: 210906			
	APPROVAL	BY	DATE	
	CHECK			
	ENG.			
	SCALE	AS NOTED		
	DRAWN BY	M BOYER		
		2019-Nov-06		
SIZE	DRAWING NAME		SHEET	REV.DOC
A	210906_R1_0		1 OF 6	1.



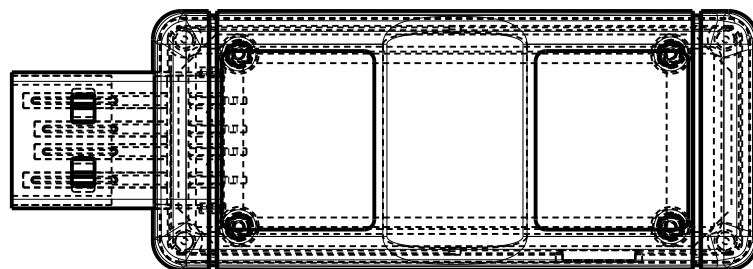
SCALE 1.500



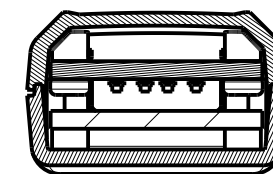
OPTIONAL MOLDED TYPE A
USB OPENING.
SEE CONFIG TABLE



SECTION A-A

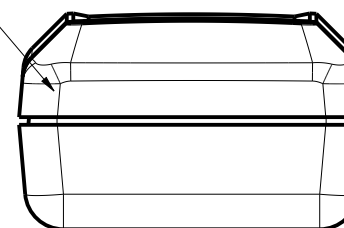


PCB MUST MOUNT TO THE
COVER FOR TYPE A USB
TO ALIGN WITH THE MOLDED
OPENING. ALTERNATE POST
HEIGHTS ARE AVAILABLE
UPON REQUEST FOR
QUOTE.



SECTION X-X

PRESS FIT
CLOSURE
SEE NOTES



SECTION P-P
SCALE 2.000

TOLERANCES: UNLESS OTHERWISE SPECIFIED
DIMENSIONS ARE IN U.S. INCHES.
X.XX = .015 X.XXXX = .001
X.XXX = .010 X.X° = 1°

NEW AGE ENCLOSURES

Customer's Part No: 210906

APPROVAL	BY	DATE
CHECK		
ENG.		
SCALE	AS NOTED	

DRAWN BY	2019-Nov-06
M BOYER	

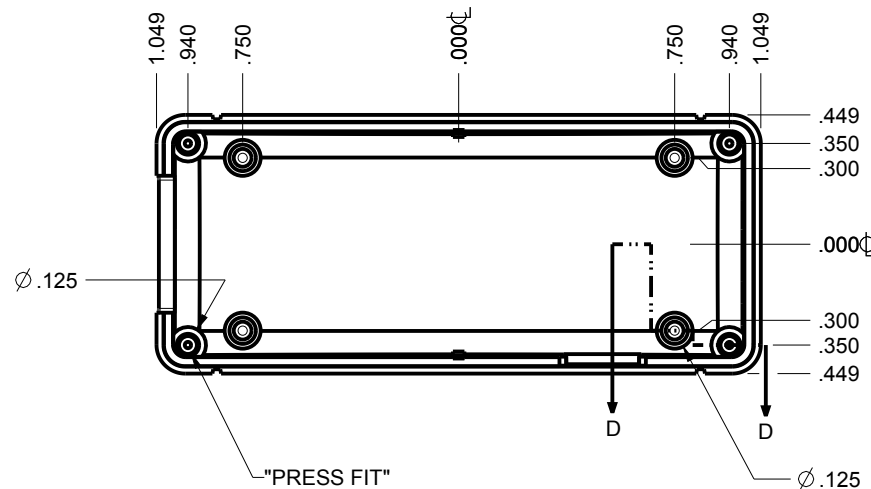
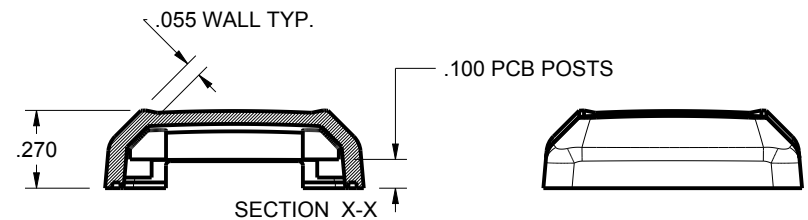
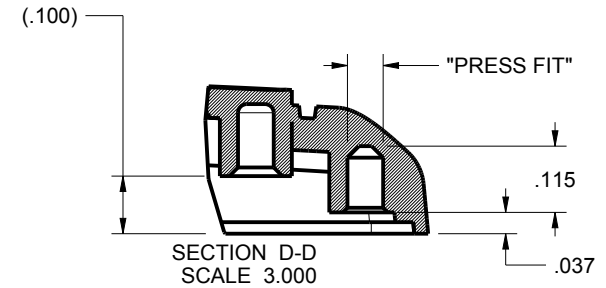
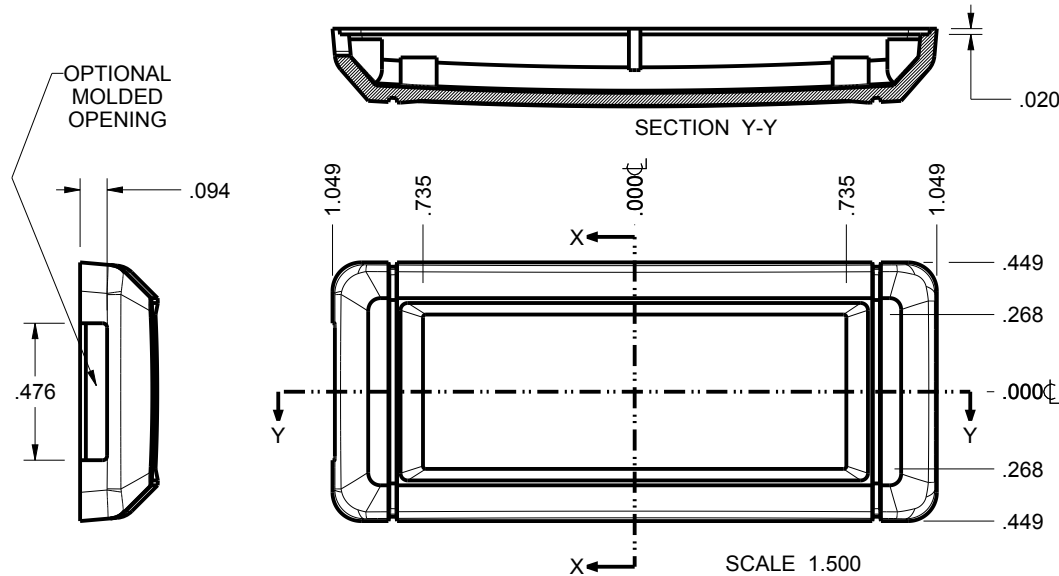
**NEW AGE
ENCLOSURES**

2240 South Thornburg Street Santa Maria, CA. 93455
ph. (805) 595-1310 fax (805) 595-1024
www.newageenclosures.com

**TINY REMOTE - STANDARD
PXX-210906X ASSEMBLY**

SIZE	DRAWING NAME	SHEET	REV.DOC
A	210906_R1_0	2 OF 6	1.0

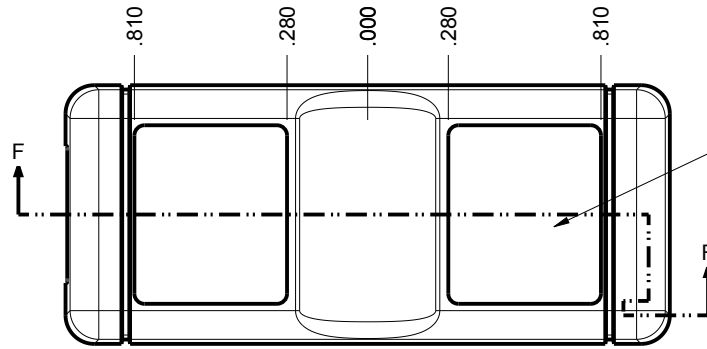
210906 COVER



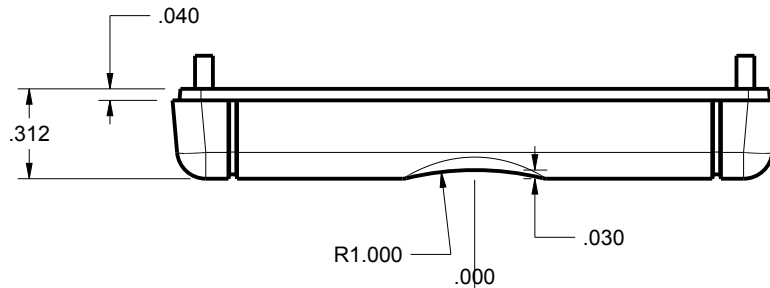
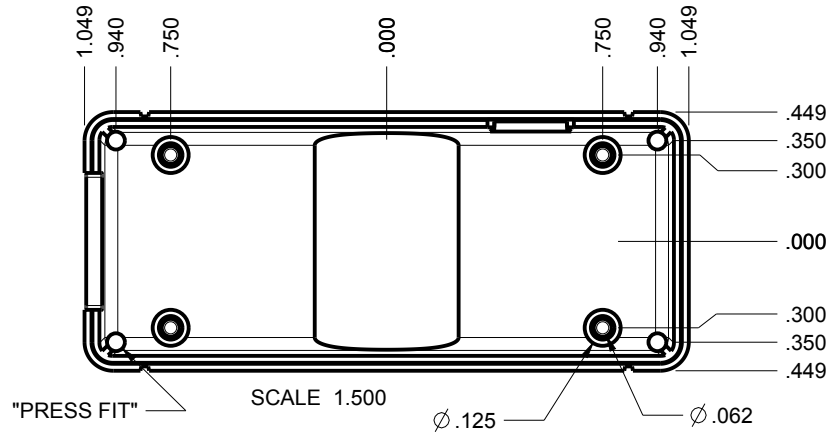
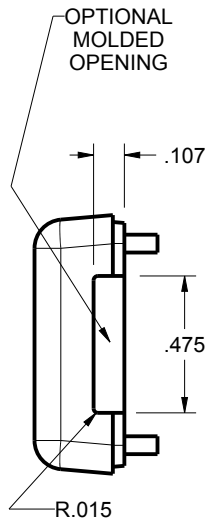
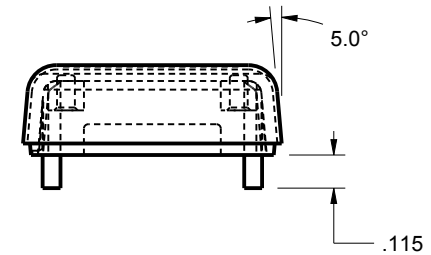
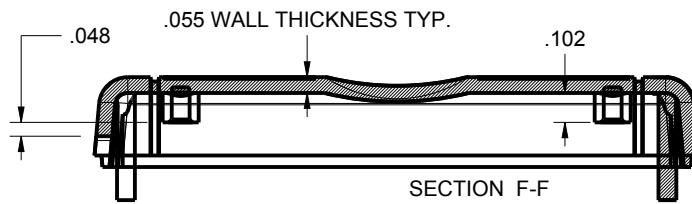
TOLERANCES: UNLESS OTHERWISE SPECIFIED DIMENSIONS ARE IN U.S. INCHES.		
X.XX = .015 X.XXXX = .001		
X.XXX = .010 X.X° = 1°		
NEW AGE ENCLOSURES		
Customer's Part No: 210906		
APPROVAL	BY	DATE
CHECK		
ENG.		
SCALE	AS NOTED	
DRAWN BY	2019-Nov-06	
M BOYER		

NEW AGE ENCLOSURES		
2240 South Thornburg Street Santa Maria, CA. 93455		
ph. (805) 595-1310 fax (805) 595-1024		
www.newageenclosures.com		
TINY REMOTE - STANDARD PXX-210906X ASSEMBLY		
SIZE	DRAWING NAME	SHEET
A	210906_R1_0	3 OF 6
		REV.DOC
		1.0

210906 BASE



LABEL RECESS - .005 ∇ STANDARD
2 PLACES



TOLERANCES- UNLESS OTHERWISE SPECIFIED DIMENSIONS ARE IN U.S. INCHES.		
X.XX = .015 X.XXXX = .001		
X.XXX = .010 X.X° = 1°		
NEW AGE ENCLOSURES		
Customer's Part No: 210906		
APPROVAL	BY	DATE
CHECK		
ENG.		
SCALE	AS NOTED	
DRAWN BY	2019-Nov-06	
M BOYER		

NEW AGE ENCLOSURES
2240 South Thornburg Street Santa Maria, CA. 93455
ph. (805) 595-1310 fax (805) 595-1024
www.newageenclosures.com

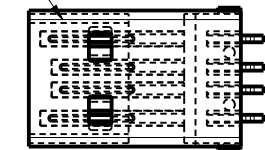
**TINY REMOTE - STANDARD
PXX-210906X ASSEMBLY**

SIZE	DRAWING NAME	SHEET	REV.DOC
A	210906_R1_0	4 OF 6	1.0

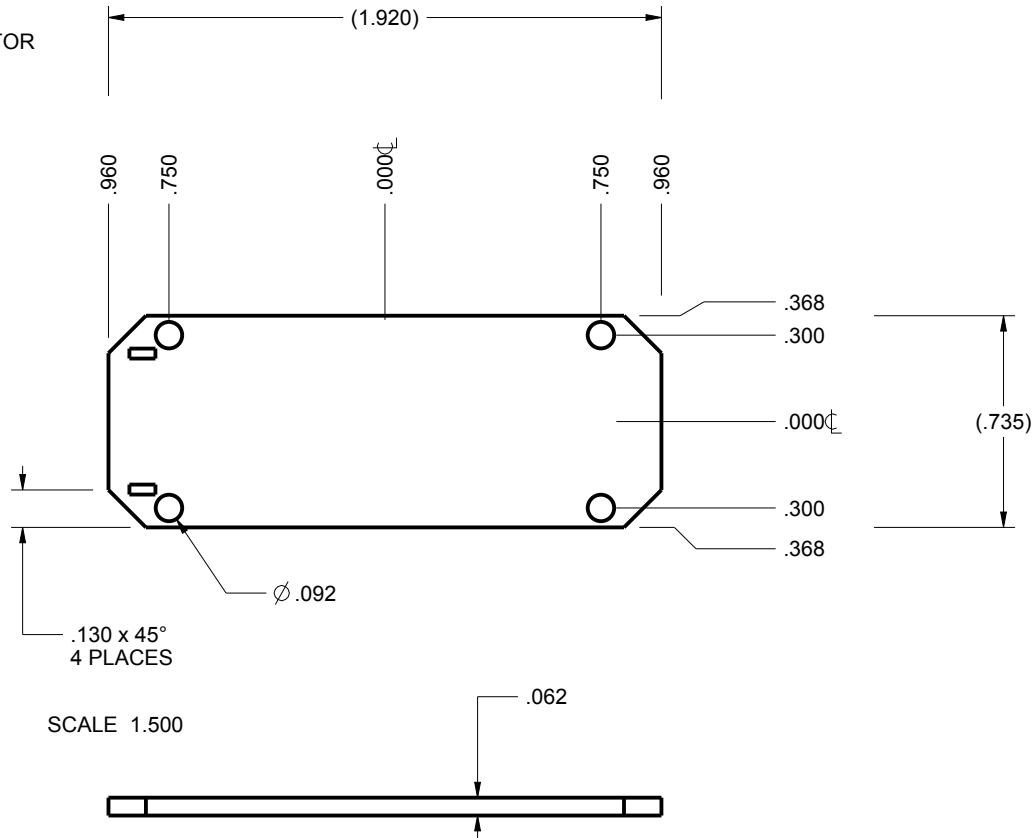
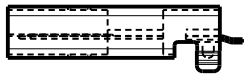
210906 PCB - CUSTOMER SUPPLIED

PCB SIZES ARE RECOMMENDATIONS ONLY. FINAL
SIZES AND VERIFICATION OF ITS FIT ARE THE
SOLE RESPONSIBILITY OF THE OEM.

REFERENCED TYPE A USB PLUG CONNECTOR
ACON, ADVANCED CONNECTEK INC.
PN. C-UAR70-00-00
www.acon.com/en-global/product/detail/378



SCALE 1.500



SCALE 1.500

TOLERANCES- UNLESS OTHERWISE SPECIFIED DIMENSIONS ARE IN U.S. INCHES.		
X.XX = .015 X.XXXX = .001		
X.XXX = .010 X.X° = 1°		
NEW AGE ENCLOSURES		
Customer's Part No: 210906		
APPROVAL	BY	DATE
CHECK		
ENG.		
SCALE	AS NOTED	
DRAWN BY	2019-Nov-06	
M BOYER		

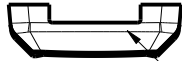
NEW AGE ENCLOSURES	
2240 South Thornburg Street ph. (805) 595-1310	Santa Maria, CA. 93455 fax (805) 595-1024
www.newageenclosures.com	

**TINY REMOTE - STANDARD
PXX-210906X ASSEMBLY**

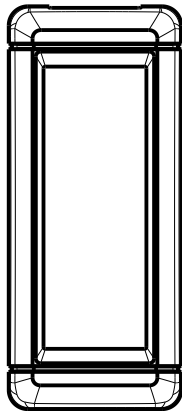
SIZE A	DRAWING NAME 210906_R1_0	SHEET 5 OF 6	REV.DOC 1.0
------------------	-----------------------------	-----------------	-----------------------

2nd OPERATION DETAILS

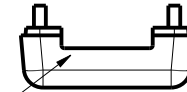
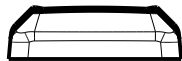
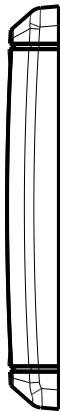
NEW AGE ENCLOSURES DELIVERS YOUR ENCLOSURE MARKET-READY WITH IN-HOUSE
CNC MACHINING, PAD PRINTING, ASSEMBLY, AND FULFILLMENT.
ALL SURFACES AND AREAS ARE AVAILABLE FOR CNC ALTERATION BY NEW AGE ENCLOSURES
CALL (805) 595-1310 FOR PRICING AND SCHEDULE.
THE INSIDE RADIUS OF ANY MACHINED FEATURES SHOULD BE NO SMALLER THAN .031"



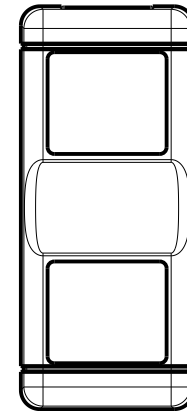
MOLDED
TYPE A USB
OPENING



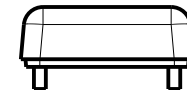
210906 COVER
SCALE 1.000



MOLDED
TYPE A USB
OPENING



210906 BASE
SCALE 1.000



PXX-210906X-XXX COVER - ABS, BLACK

STEP	DESCRIPTION	CUTTER	FIXTURE	ORIENTATION	PROGRAM
1-C-C1	-	T2 = .062" EM	-	-	o1001
2-C-C2	-	T2 = .062" EM	-	-	o1002

PXX-210906X-XXX BASE - ABS, BLACK

STEP	DESCRIPTION	CUTTER	FIXTURE	ORIENTATION	PROGRAM
3-B-C1	-	T2 = .062" EM	-	-	o1003
4-B-C2	-	T2 = .062" EM	-	-	o1004

TOLERANCES: UNLESS OTHERWISE SPECIFIED
DIMENSIONS ARE IN U.S. INCHES.

X.XX = .015 X.XXXX = .001
X.XXX = .010 X.X° = 1°

NEW AGE ENCLOSURES

Customer's Part No: 210906

APPROVAL	BY	DATE
CHECK		
ENG.		
SCALE	AS NOTED	
DRAWN BY	M BOYER	
	2019-Nov-06	

**NEW AGE
ENCLOSURES**

2240 South Thornburg Street Santa Maria, CA. 93455
ph. (805) 595-1310 fax (805) 595-1024
www.newageenclosures.com

**TINY REMOTE - STANDARD
PXX-210906X ASSEMBLY**

SIZE	DRAWING NAME	SHEET	REV.DOC
A	210906_R1_0	6 OF 6	1.0

Mouser Electronics

Authorized Distributor

Click to View Pricing, Inventory, Delivery & Lifecycle Information:

New Age Enclosures:

[P1A-210906U](#) [P3A-210906U](#)