

**μPC3239TB-EVAL-A**

**Evaluation Board**

- Circuit Description
- Circuit schematic and assembly drawing

## Circuit Description

The circuit schematic and assembly drawing are shown on the next pages.

The uPC3239TB is a broad band device and does not require external matching circuits.

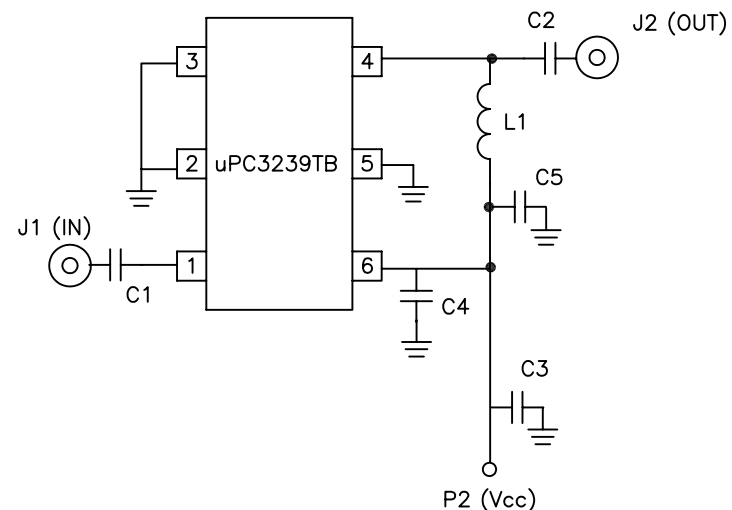
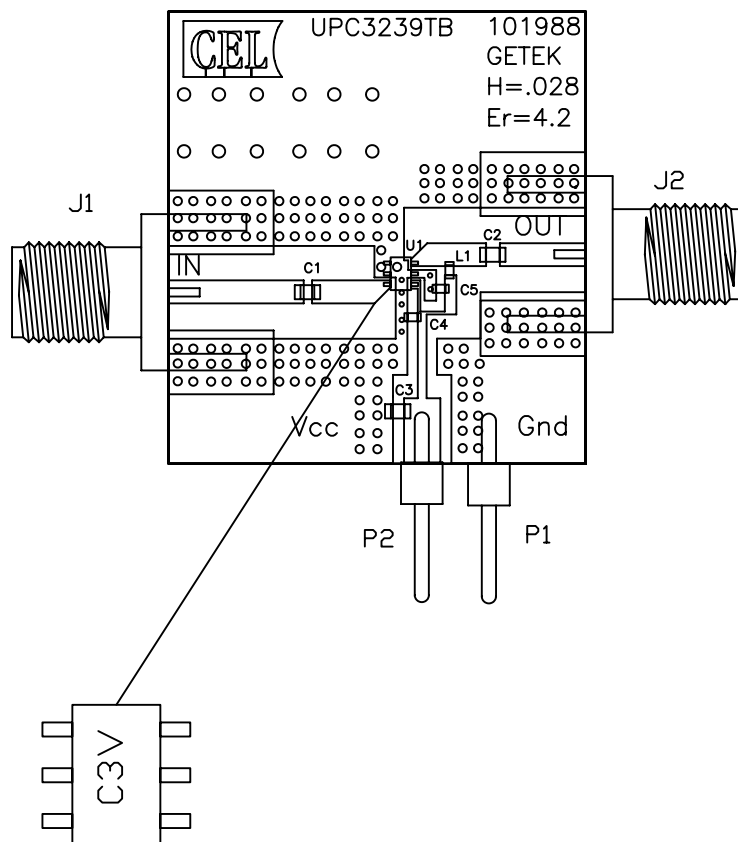
C1 and C2 are the input and output DC block capacitors respectively. The value for C1 and C2 is chosen for reasonably good return loss over a wide frequency range. For a narrow band application the input or/and output return loss might be improved for certain frequency range by changing the value of C1 or/and C2.

L1 is used as an RF chock. C4 and C5 are general purpose bypass capacitors on DC lines.

A section of trace between locations of C4 and C5 is for connection only and its length is not critical to performance.


The PCB is 28mil thick Getek. The dielectric constant is 4.2.

REVISIONS				
ZONE	LTR	DESCRIPTION	DATE	APPROVED



2	142-0701-841	J1, J2	SMA FEM. E.F. JOHNSON	8
3	2340-6111 TG	P1,P2,P3	PIN HEADER 3M	7
1	LQG15HSR10J02	L1	0402 100nH IND +/-5% MURATA	6
2	GRM1555C1H102JA01B	C4, C5	0402 1000pF CAP +/-5% MURATA	5
1	GRM1885C1H102JA01B+A01	C3	0603 1000pF CAP MURATA	4
2	GRM1885C1H101JA01B+A01	C1,C2	0603 100pF CAP MURATA	3
1	uPC3239TB-A	U1	IC NEC uPC3239TB-A AMPLIFIER	2
1	CL-101988	PCB	COMPONENT LAYOUT DRAWING	1
QTY	PART NUMBER OR IDENTIFYING NO.	NOMENCLATURE OR DESCRIPTION	MATERIAL/SPECIFICATION	ITEM NO.

PARTS LIST

APPROVALS		 <b>CALIFORNIA EASTERN LABS</b> 4590 PATRICK HENRY DR. SANTA CLARA CA. 95054	
Drawing by:	MD	TITLE:  <b>ASSEMBLY DRAWING</b> <b>uPC3239TB-EVAL-A</b>	
Designed by:	03/09		
Checked by:	# date #		
Project Engineer:		SIZE	FSCM NO.
Quality Control:		C	
		DWG NO.	AD-101988

SCALE SCALE RELEASE DATE RELEDATE SHEET SHNOF NOSH

# Mouser Electronics

Authorized Distributor

Click to View Pricing, Inventory, Delivery & Lifecycle Information:

CEL:

[UPC3239TB-EVAL-A](#)