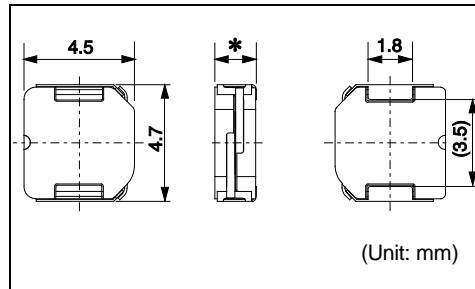
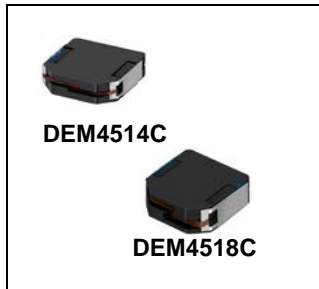
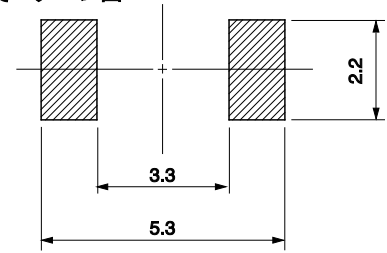


DEM4514C/DEM4518C

Inductance Range: 1.2~33μH (DEM4514C), 1.2~22μH (DEM4518C)

 *DEM4514C: 1.4mm Max.
 DEM4518C: 1.8mm Max.

Recommended patterns

推奨パターン図



(Unit: mm)

FEATURES 特長

- Low profile (4.5×4.7mm square, 1.4 and 1.8mm Max. height).
- Magnetically shielded construction and low DC resistance.
- Ideal for a variety of DC-DC converter inductor applications.
- RoHS compliant.
- 小型薄形構造(4.5×4.7mm角, 高さ1.4および1.8mm Max.)
- 閉磁路構造、低直流抵抗
- 各種機器のDC-DCコンバータ用インダクタに最適
- RoHS指令対応

STANDARD PART NUMBERS 標準品一覧
TYPE DEM4514C (Quantity/reel; 2,000 PCS)

品番	インダクタンス ⁽¹⁾	許容差	直流抵抗 ⁽²⁾	直流重量許容電流 ⁽³⁾	温度上昇許容電流 ⁽³⁾
Part Number	Inductance ⁽¹⁾ (μH)	Tolerance (%)	DC Resistance ⁽²⁾ (mΩ) Max. (Typ.)	Inductance Decrease Current ⁽³⁾ (A) Max. (Typ.) $\frac{\Delta L}{L} = 30\%$	Temperature Rise Current ⁽³⁾ ΔT=40°C (A) Max. (Typ.)
1234AS-H-1R2N=P3	1.2	±30	60 (50)	2.60 (3.45)	2.45 (2.85)
1234AS-H-1R8N=P3	1.8	±30	72 (60)	2.20 (2.95)	2.20 (2.60)
1234AS-H-2R4M=P3	2.4	±20	84 (70)	1.90 (2.55)	2.00 (2.35)
1234AS-H-3R3M=P3	3.3	±20	96 (80)	1.70 (2.25)	1.90 (2.25)
1234AS-H-4R7M=P3	4.7	±20	120 (100)	1.45 (1.90)	1.55 (1.85)
1234AS-H-6R8M=P3	6.8	±20	156 (130)	1.20 (1.55)	1.40 (1.65)
1234AS-H-100M=P3	10	±20	192 (160)	1.00 (1.35)	1.25 (1.50)
1234AS-H-120M=P3	12	±20	228 (190)	0.90 (1.20)	1.10 (1.30)
1234AS-H-150M=P3	15	±20	276 (230)	0.80 (1.05)	1.00 (1.20)
1234AS-H-220M=P3	22	±20	444 (370)	0.65 (0.89)	0.75 (0.89)
1234AS-H-330M=P3	33	±20	648 (540)	0.55 (0.75)	0.63 (0.75)

TYPE DEM4518C (Quantity/reel; 2,000 PCS)

品番	インダクタンス ⁽¹⁾	許容差	直流抵抗 ⁽²⁾	直流重量許容電流 ⁽³⁾	温度上昇許容電流 ⁽³⁾
Part Number	Inductance ⁽¹⁾ (μH)	Tolerance (%)	DC Resistance ⁽²⁾ (mΩ) Max. (Typ.)	Inductance Decrease Current ⁽³⁾ (A) Max. (Typ.) $\frac{\Delta L}{L} = 30\%$	Temperature Rise Current ⁽³⁾ ΔT=40°C (A) Max. (Typ.)
1235AS-H-1R2N=P3	1.2	±30	47 (39)	3.50 (4.70)	2.90 (3.40)
1235AS-H-1R8N=P3	1.8	±30	56 (47)	3.00 (3.90)	2.70 (3.20)
1235AS-H-2R4M=P3	2.4	±20	65 (54)	2.60 (3.40)	2.30 (2.70)
1235AS-H-3R3M=P3	3.3	±20	74 (62)	2.30 (3.00)	2.10 (2.50)
1235AS-H-4R3M=P3	4.3	±20	84 (70)	2.00 (2.65)	2.00 (2.40)
1235AS-H-6R8M=P3	6.8	±20	106 (88)	1.70 (2.20)	1.90 (2.20)
1235AS-H-100M=P3	10	±20	132 (110)	1.30 (1.75)	1.70 (2.00)
1235AS-H-150M=P3	15	±20	192 (160)	0.98 (1.30)	1.10 (1.30)
1235AS-H-220M=P3	22	±20	306 (255)	0.91 (1.20)	1.00 (1.20)

- (1) Inductance is measured with a LCR meter 4284A (Agilent Technologies) or equivalent.
Test frequency at 100kHz
- (2) DC resistance is measured with 34420A (Agilent Technologies) or 3541(HIOKI). (Reference ambient temperature 25°C)
- (3) Maximum allowable DC current is that which causes a 30% inductance reduction from the initial value, or coil temperature to rise by 40°C, whichever is smaller. (Reference ambient temperature 20°C)

- (1) インダクタンスはLCRメータ4284A (Agilent Technologies) または同等品により測定する。
測定周波数は100kHz。
- (2) 直流抵抗は測定器34420A (Agilent Technologies) または3541 (HIOKI) と同等品により測定する。(周囲温度25°C)
- (3) 最大許容電流は、直流重量電流を流した時インダクタンスの値が初期値より30%減少する直流電流値、または直流電流により、コイルの温度が40°C上昇の何れか小さい値。(周囲温度20°Cを基準とする。)

Mouser Electronics

Authorized Distributor

Click to View Pricing, Inventory, Delivery & Lifecycle Information:

Murata:

[1235AS-H-150M=P3](#) [1234AS-H-3R3M=P3](#) [1234AS-H-120M=P3](#) [1235AS-H-100M=P3](#) [1234AS-H-2R4M=P3](#)
[1234AS-H-4R7M=P3](#) [1235AS-H-2R4M=P3](#) [1235AS-H-3R3M=P3](#) [1234AS-H-1R8N=P3](#) [1234AS-H-6R8M=P3](#)
[1234AS-H-220M=P3](#) [1234AS-H-1R2N=P3](#) [1235AS-H-1R2N=P3](#) [1235AS-H-1R8N=P3](#) [1234AS-H-330M=P3](#) [1235AS-](#)
[H-4R3M=P3](#) [1234AS-H-150M=P3](#) [1235AS-H-220M=P3](#) [1234AS-H-100M=P3](#) [1235AS-H-6R8M=P3](#)