

QUICK CONNECT SELECTION GUIDE



BU-190170031



BU-190230005



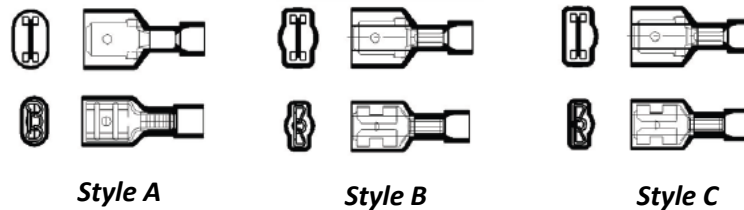
BU-190170047



AI-50207

- Mueller offers a wide range of quick connects that are suitable for a variety of applications.
- 4 different wire ranges
 - 12-10AWG
 - 16-14AWG
 - 22-18AWG
 - 22-16AWG
- 3 different tab sizes in both male and female
 - .250 X .032
 - .187 X .032
 - .187 X .020
- 4 different insulation styles
 - Nyax heat shrink
 - Nylon (fully insulated and partially insulated)
 - Vinyl
- Terminals are made of 260 hard brass with electro-tin plating
- Rated Voltage: 300V
- Single crimp terminals
- Solid or stranded wire accepted
- Recommended strip length: 1/4"

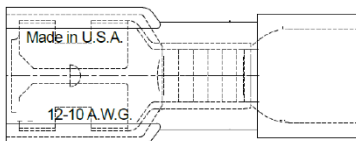
Fully Insulated Style Guide
(Refer to "style" column in tables below)



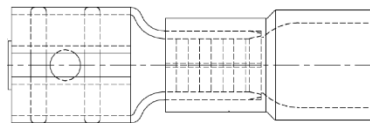
12-10AWG QUICK CONNECTS

PART NUMBER	AWG SIZE	MALE/FEMALE	TAB SIZE	INSULATION MATERIAL	FULLY INSULATED	STYLE	Temp Rating (°C)
AI-70213	12-10	FEMALE	.250 X .032	NYAX HEAT SHRINK	YES	N/A	125
AI-20167N*	12-10	FEMALE	.187 X .032	NYLON	PARTIAL	N/A	75
AI-50187N	12-10	FEMALE	.250 X .032	NYLON	PARTIAL	N/A	75
AI-50213	12-10	FEMALE	.250 X .032	NYLON	YES	B	75
BU-190070040*	12-10	FEMALE	.250 X .032 (FLAG)	NYLON	YES	N/A	105
AI-20167*	12-10	FEMALE	.187 X .032	VINYL	PARTIAL	N/A	75
BU-190170047	12-10	FEMALE	.250 X .032	VINYL	PARTIAL	N/A	75
AI-70212	12-10	MALE	.250 X .032	NYAX HEAT SHRINK	YES	N/A	125
AI-50186N*	12-10	MALE	.250 X .032	NYLON	PARTIAL	N/A	75
AI-50212	12-10	MALE	.250 X .032	NYLON	YES	B	75
BU-190230008*	12-10	MALE	.250 X .032	VINYL	PARTIAL	N/A	75

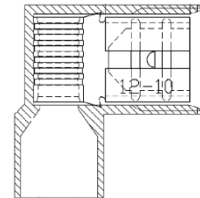
FULLY INSULATED



PARTIALLY INSULATED



FLAG

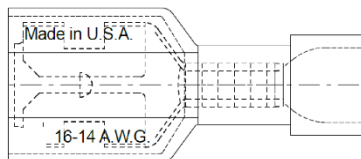


*UL LISTED --ALL DIMENSIONS ARE IN INCHES --CELL COLOR DEPICTS INSULATION COLOR

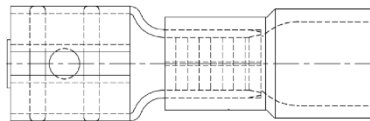
16-14AWG QUICK CONNECTS

PART NUMBER	AWG SIZE	MALE/FEMALE	TAB SIZE	INSULATION MATERIAL	FULLY INSULATED	STYLE	TEMP RATING (°C)
AI-70209	16-14	FEMALE	.250 X .032	NYAX HEAT SHRINK	YES	N/A	125
BU-190030040*	16-14	FEMALE	.250 X .032	NYLON	YES	A	105
AI-50209	16-14	FEMALE	.250 X .032	NYLON	YES	B	75
BU-19005-005	16-14	FEMALE	.250 X .032	NYLON	YES	C	105
AI-50195N	16-14	FEMALE	.187 X .020	NYLON	PARTIAL	N/A	75
AI-50180N	16-14	FEMALE	.250 X .032	NYLON	PARTIAL	N/A	75
BU-190070021*	16-14	FEMALE	.250 X .032 (FLAG)	NYLON	PARTIAL	N/A	105
BU-190170031	16-14	FEMALE	.187 X .020	VINYL	PARTIAL	N/A	75
BU-190170037	16-14	FEMALE	.250 X .032	VINYL	PARTIAL	N/A	75
AI-70208	16-14	MALE	.250 X .032	NYAX HEAT SHRINK	YES	N/A	125
AI-50208	16-14	MALE	.250 X .032	NYLON	YES	B	75
BU-190040005	16-14	MALE	.250 X .032	NYLON	YES	C	105
AI-50198N	16-14	MALE	.187 X .020	NYLON	PARTIAL	N/A	75
AI-50181N*	16-14	MALE	.250 X .032	NYLON	PARTIAL	N/A	75
BU-190230010	16-14	MALE	.187 X .020	VINYL	PARTIAL	N/A	75
BU-190230012	16-14	MALE	.250 X .032	VINYL	PARTIAL	N/A	75

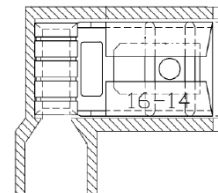
FULLY INSULATED



PARTIALLY INSULATED



FLAG

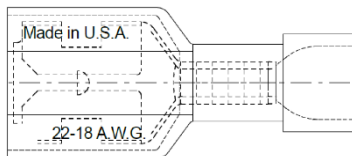


*UL LISTED -ALL DIMENSIONS ARE IN INCHES --CELL COLOR DEPICTS INSULATION COLOR

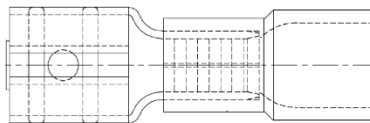
22-18AWG QUICK CONNECTS

PART NUMBER	AWG SIZE	MALE/FEMALE	TAB SIZE	INSULATION MATERIAL	FULLY INSULATED	STYLE	TEMP RATING (°C)
AI-70207	22-18	FEMALE	.250 X .032	NYAX HEAT SHRINK	YES	N/A	125
AI-50207	22-18	FEMALE	.250 X .032	NYLON	YES	B	75
BU-19005-0001	22-18	FEMALE	.250 X .032	NYLON	YES	C	105
BU-190070001*	22-18	FEMALE	.250 X .032 (FLAG)	NYLON	YES	N/A	105
AI-50192N	22-18	FEMALE	.187 X .020	NYLON	PARTIAL	N/A	75
BU-190170007	22-18	FEMALE	.187 X .020	VINYL	PARTIAL	N/A	75
AI-70206	22-18	MALE	.250 X .032	NYAX HEAT SHRINK	YES	N/A	125
AI-50206	22-18	MALE	.250 X .032	NYLON	YES	B	75
BU-190040001	22-18	MALE	.250 X .032	NYLON	YES	C	105
AI-50197N	22-18	MALE	.187 X .020	NYLON	PARTIAL	N/A	75
AI-50177N*	22-18	MALE	.250 X .032	NYLON	PARTIAL	N/A	75
BU-190230003	22-18	MALE	.187 X .020	VINYL	PARTIAL	N/A	75
BU-190230005*	22-18	MALE	.250 X .032	VINYL	PARTIAL	N/A	75

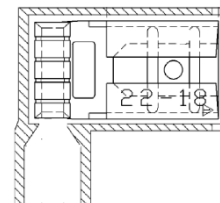
FULLY INSULATED



PARTIALLY INSULATED



FLAG

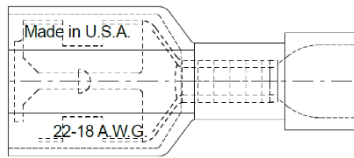


*UL LISTED --ALL DIMENSIONS ARE IN INCHES --CELL COLOR DEPICTS INSULATION COLOR

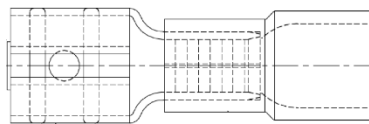
22-16AWG QUICK CONNECTS

<i>PART NUMBER</i>	<i>AWG SIZE</i>	<i>MALE/FEMALE</i>	<i>TAB SIZE</i>	<i>INSULATION MATERIAL</i>	<i>FULLY INSULATED</i>	<i>STYLE</i>	<i>TEMP RATING (°C)</i>
BU-190030001*	22-16	FEMALE	.250 X .032	NYLON	YES	A	105
AI-50176N	22-16	FEMALE	.250 X .032	NYLON	PARTIAL	N/A	75
BU-190170014	22-16	FEMALE	.250 X .032	VINYL	PARTIAL	N/A	75

FULLY INSULATED



PARTIALLY INSULATED



*UL LISTED -ALL DIMENSIONS ARE IN INCHES --CELL COLOR DEPICTS INSULATION COLOR

Mouser Electronics

Authorized Distributor

Click to View Pricing, Inventory, Delivery & Lifecycle Information:

Mueller Electric:

[BU-190230005](#) [AI-50177N](#) [AI-70208](#) [BU-190070021](#) [BU-190230010](#) [BU-190170014](#) [AI-70209](#) [AI-50198N](#) [BU-190230012](#) [AI-50180N](#) [AI-50212](#) [AI-20167N](#) [BU-190170007](#) [BU-190170037](#) [AI-50206](#) [AI-50209](#) [AI-50208](#) [AI-50176N](#) [AI-20167](#) [BU-190230003](#) [BU-190170031](#) [AI-50186N](#) [AI-50192N](#) [AI-50187N](#) [BU-19005-005](#) [AI-50195N](#) [BU-190170047](#) [BU-190070040](#) [AI-70207](#) [AI-50213](#) [AI-50197N](#) [AI-50181N](#) [AI-70213](#) [AI-50207](#) [BU-190030040](#) [AI-70206](#) [BU-190040005](#) [BU-190030001](#) [BU-190040001](#) [AI-70212](#) [BU-19005-0001](#) [BU-190070001](#) [BU-190230008](#)