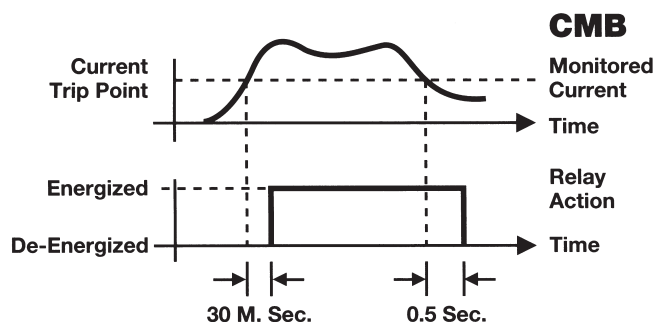


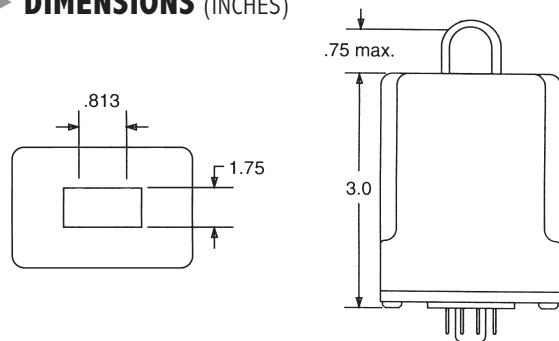
OPERATION

The **CMB Series** relay is used to detect the presence of AC current. When the monitored current exceeds the trip point for longer than 30 milliseconds, the internal relay energizes. When the monitored current drops below the trip point for longer than 0.5 seconds, the internal relay de-energizes. The Delay-on-Release is incorporated to prevent nuisance tripping caused by momentary dips in the load line.

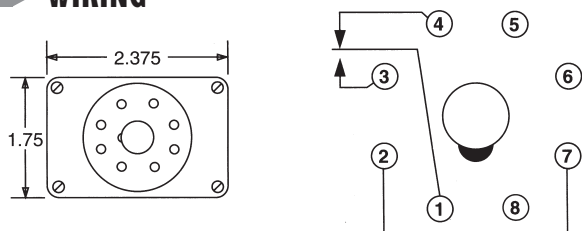
An External CT may be used to extend the range of the Current Monitor.



DIMENSIONS (INCHES)



WIRING



MODEL NUMBER

MODEL NUMBER	CMB			F	A	
CONTROL VOLTAGE						
24 Volts AC		24	A			
24 Volts DC (Not c [®] us)		24	D			
120 Volts AC		120	A			
CURRENT TRIP POINTS						
1 amp						1
2 amps						2
3 amps						3
4 amps						4
5 amps						5
6 amps						6
7 amps						7
8 amps						8
9 amps						9
10 amps						10

C[®]us
E55826



AC Go/No-Go Current Monitor/Relay

- Easy Installation
- No physical connection to the AC line that is being monitored
- Magnetically coupled by passing supply line through protruding Current Transformer
- 8-Pin, Plug-in

SPECIFICATIONS

CONTROL VOLTAGE 24 or 120 VAC; 50/60 Hz, 24 VDC

TRIP POINTS 1-10 Amps, Fixed

AC INPUT CURRENT Up to 50 Amps

OUTPUT SPDT, 10 Amps @ 240 VAC Resistive;
211 VA @ 120 VAC Inductive;
1/6 Horsepower @ 120 VAC or
1/3 Horsepower @ 240 VAC

POWER CONSUMPTION 3 Watts (Approximately)

RESPONSE TIME Operate 30 mSEC
Release 0.5 SEC

LIFE EXPECTANCY Mechanical 10 Million Operations (Minimum)
Electrical 100,000 Operations @
Rated Load

DUTY CYCLE Continuous

TEMPERATURE RATING Operate 32° to 131°F (0° to +55°C)
Storage -49° to 185°F (-45° to +85°C)

SOCKETS RB-08 or PF083A

ENCLOSURE Lexan Dust Cover; 8-Pin plug-in

WEIGHT 6 oz

Mouser Electronics

Authorized Distributor

Click to View Pricing, Inventory, Delivery & Lifecycle Information:

[Mueller Electric:](#)

[CMB-120-AFA1](#)