



EV6605C-R-00A

4-Channel Low-Side Driver with I²C Interface Evaluation Board

DESCRIPTION

The EV6605C-R-00A evaluation board is designed to demonstrate the capabilities of the MP6605C, a 4-channel low-side (LS) driver with an I²C interface. It integrates low-side MOSFETs (LS-FETs) and high-side (HS) clamp diodes to drive inductive loads.

The MP6605C operates from a supply voltage up to 60V, and can deliver output current (I_{OUT}) up to 1.5A. The MP6605C supports a 3.3V and

5V logic supply. Internal safety features include over-current protection (OCP), under-voltage lockout (UVLO), and over-temperature (OT) shutdown.

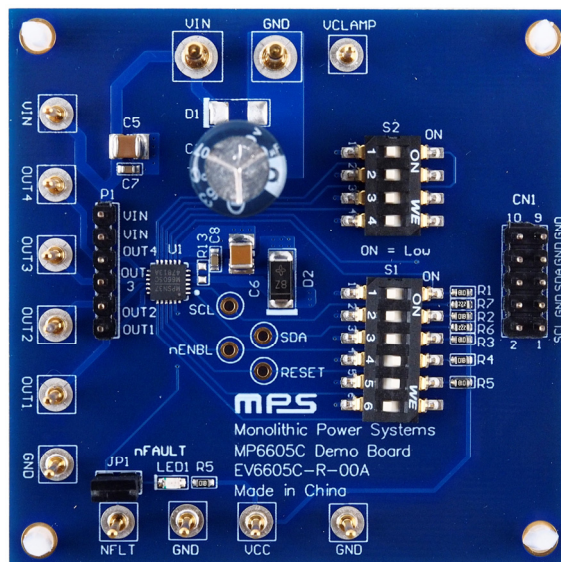
The MP6605C is typically used for unipolar stepper motors and solenoid drivers. The MP6605C is available in a QFN-24 (4mmx4mm) package.

PERFORMANCE SUMMARY

Specifications are at $T_A = 25^{\circ}\text{C}$, unless otherwise noted.

Parameters	Conditions	Value
Supply voltage range (V_{IN})	24V TVS diode connected between V_{IN} and V_{CLAMP}	4.5V to 30V
	V_{CLAMP} connected to V_{IN}	4.5V to 60V
High-side (HS) clamp voltage (V_{CLAMP})		$\leq 60\text{V}$
Maximum low-side (LS) output current (I_{OUT_LS})	For LS-FETs	1.5A
Maximum HS output current (I_{OUT_HS})	For HS diodes	1.5A at duty cycle < 20%

EV6605C-R-00A EVALUATION BOARD



LxWxH (6.35cmx6.35cmx2.5cm)

Board Number	MPS IC Number
EV6605C-R-00A	MP6605CGR

QUICK START GUIDE

1. Preset the logic power supply voltage (typically 3.3V or 5V).
2. To preset the input power supply voltage, follow the steps below:
 - a. Connect the 24V TVS diode between the VIN and VCLAMP pins (where V_{IN} is between 4.5V and 30V).
 - b. Connect VCLAMP to VIN (where V_{IN} is between 4.5V and 60V).
3. Connect the I²C communication interface to CN1.
4. Connect the loads to the OUTx terminals.
5. Connect the logic power supply terminals to:
 - a. Positive (+): VCC
 - b. Negative (-): GND
6. Connect the input power supply terminals to:
 - a. Positive (+): VIN
 - b. Negative (-): GND
7. Set the physical device address via S2.
8. LED1 indicates fault events including over-current protection (OCP), under-voltage lockout (UVLO), and over-temperature (OT) shutdown.

Figure 1 shows the measurement equipment set-up.

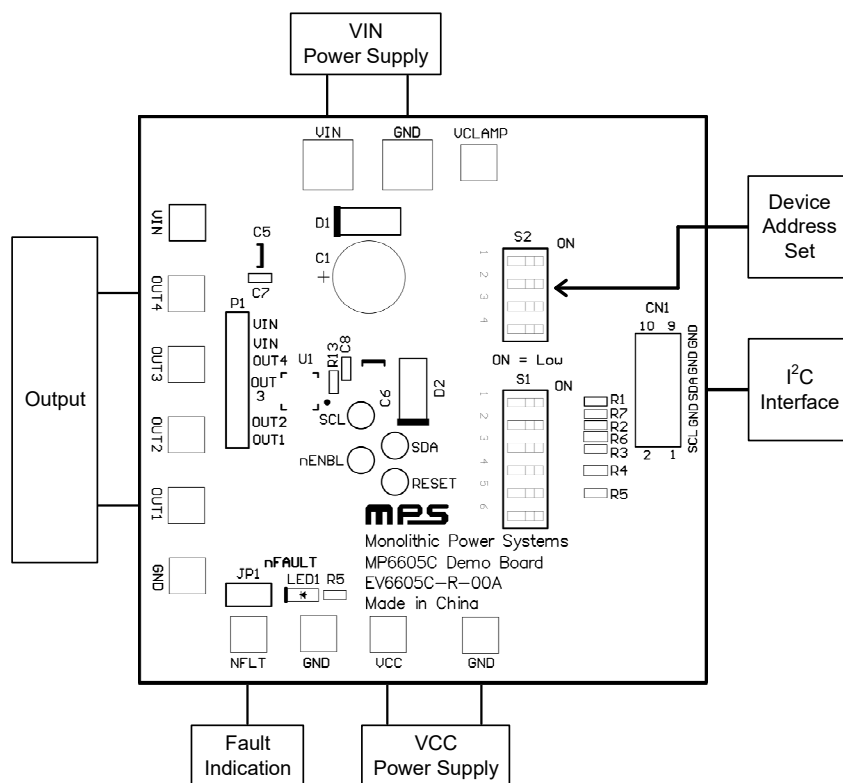


Figure 1: Measurement Equipment Test Set-Up

GUI OPERATION

To configure the device using the graphic user interface (GUI), refer to Figure 2 and follow the steps below:

1. Set the address byte. The first 3 bits are fixed to 010, the following 4 bits are the address bits, and the last bit is a read/write (R/W) bit.
2. Set the data byte. The first 4 bits are read-only, and the following 4 bits can be used to control the four LS-FETs or read their statuses.
3. Click “Write” or “Loop Write” to write the data (address byte and data byte). If the R/W bit is set to 1, then “Write” and “Loop Write” change to “Read” and “Loop Read,” respectively.

Address

	A3	A2	A1	A0	RW	Value	
0	1	0	0	0	0	0x00	Write

Data

X	S2	S1	S0	D3	D2	D1	D0	Value	
0	0	0	0	0	0	0	0	0x00	Loop Write

Figure 2: GUI Operation Configuration

EVALUATION BOARD SCHEMATIC

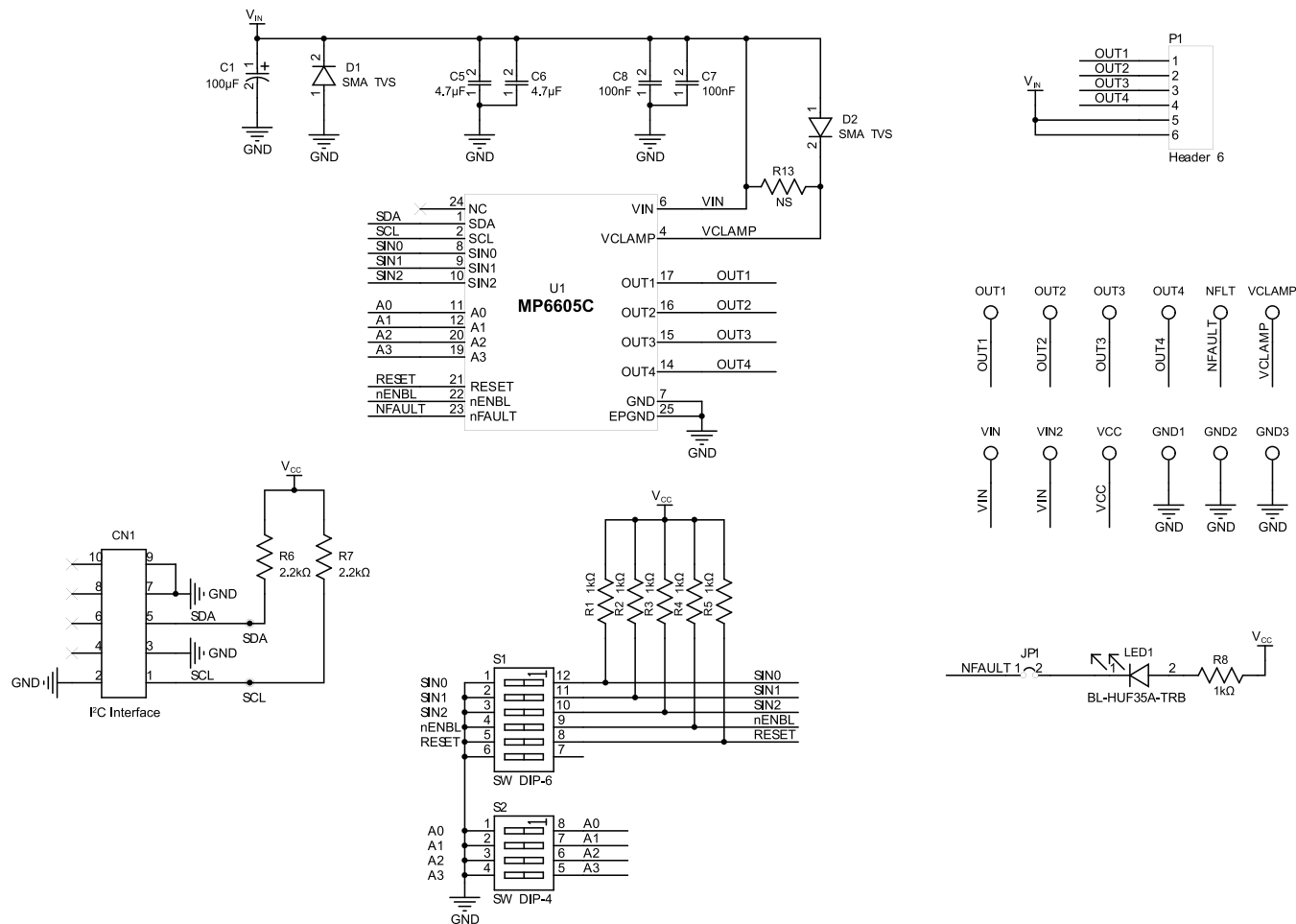


Figure 3: Evaluation Board Schematic

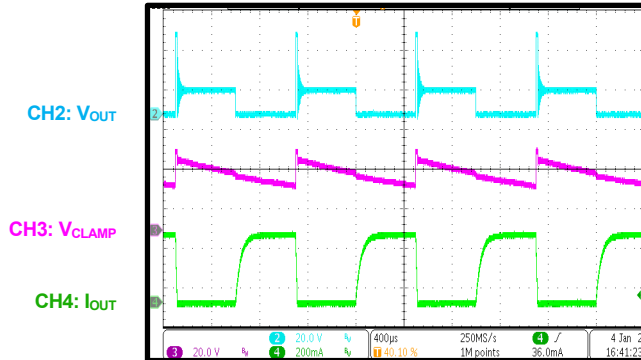
EV6605C-R-00A BILL OF MATERIALS

Qty	Ref	Value	Description	Package	Manufacturer	Manufacturer PN
1	C1	100μF	Electrolytic capacitor, 100V	DIP	Jianghai	CD263-100V100
2	C5, C6	4.7μF	Ceramic capacitor, 100V, X8L	1210	Murata	GCM32DL8EL475KE07L
2	C7, C8	100nF	Ceramic capacitor, 100V, X7R	0603	Murata	GRM188R72A104KA35D
6	R1, R2, R3, R4, R5, R8	1kΩ	Film resistor, 1%	0603	Yageo	RC0603FR-071KL
2	R6, R7	2.2kΩ	Film resistor, 1%	0603	Yageo	RC0603FR-072K2L
1	R13	NS				
1	D2	24V	TVS diode	DO-214C-2	Vishay	SMAJ24A
1	S1	6-bit	Dial switch	SMD	Wurth	418121270806
1	S2	4-bit	Dial switch	SMD	Wurth	418121270804
1	LED1	20mA	Red LED	0805	Baihong	BL-HUE35A-AV-TRB
1	JP1, P1	2.54mm	Single-line connector with jumper	SIP	Custom	
1	P1	2.54mm	Single line connector	SIP	Custom	
1	CN1	2.54mm	Dual-line connector	DIP	Custom	
2	VIN, GND1	2mm	Golden pin	SIP	Custom	
11	VCLAMP, VIN, OUT1, OUT2, OUT3, OUT4, NFLT, GND, VCC	1mm	Golden pin	SIP	Custom	
1	U1	MP6605C	4-channel low-side driver with I ² C interface	QFN-24 (4mmx4mm)	MPS	MP6605CGR

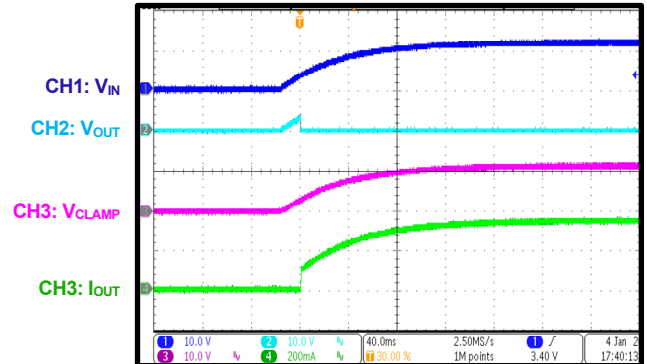
EVB TEST RESULTS

$V_{IN} = 12V$, $V_{CLAMP} = 24V$ TVS to V_{IN} , $T_A = 25^{\circ}C$, resistor + inductor load: $R = 33\Omega$, $L = 1.5mH$ per channel, unless otherwise noted.

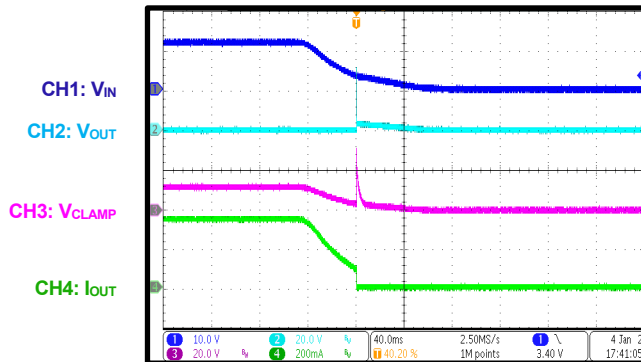
Normal Operation

 $f_{sw} = 1kHz$


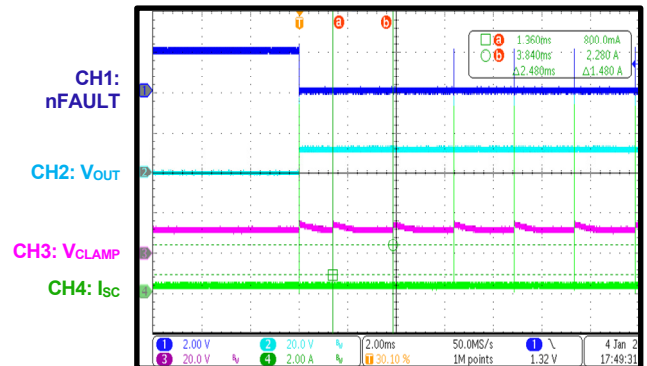
Start-Up through VIN



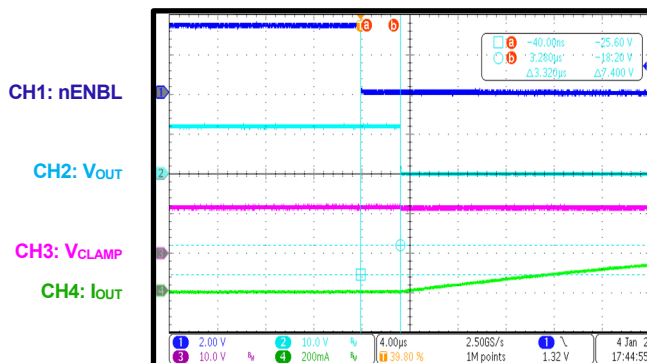
Shutdown through VIN



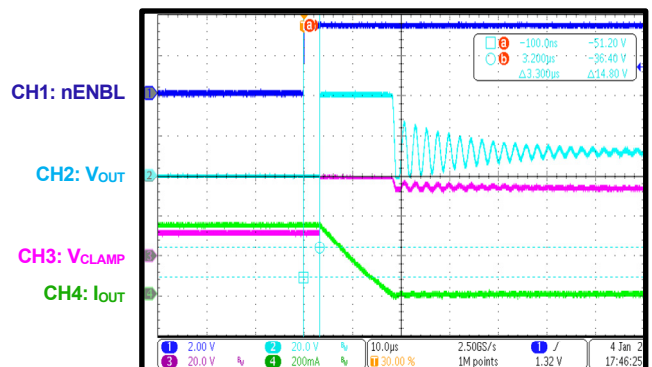
SCP



Chip Enabled



Chip Disabled



PCB LAYOUT

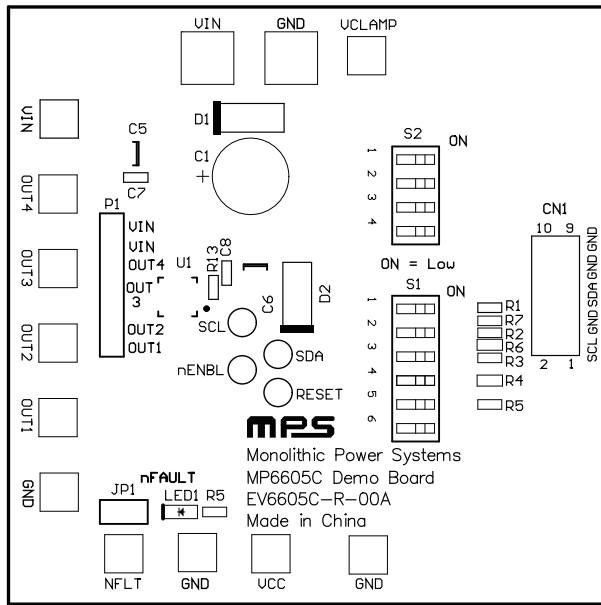


Figure 4: Top Silk

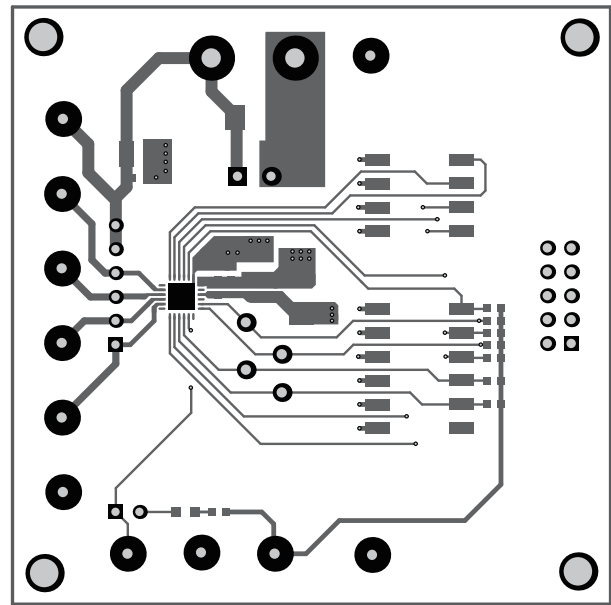


Figure 5: Top Layer

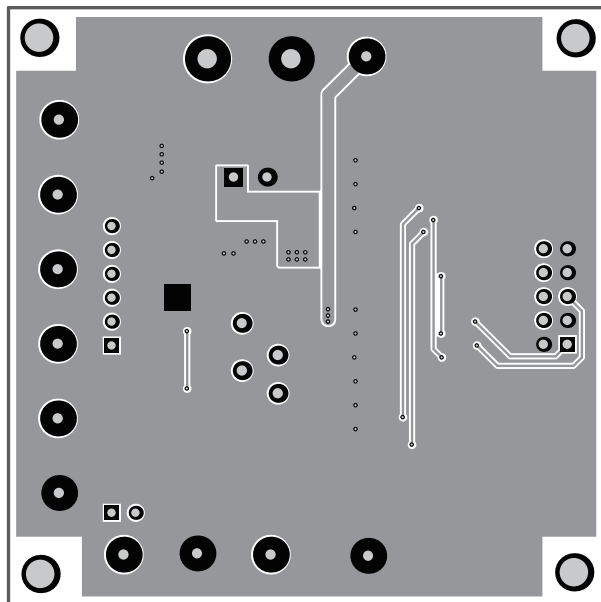


Figure 6: Bottom Layer

REVISION HISTORY

Revision #	Revision Date	Description	Pages Updated
1.0	6/14/2022	Initial Release	-

Notice: The information in this document is subject to change without notice. Please contact MPS for current specifications. Users should warrant and guarantee that third-party Intellectual Property rights are not infringed upon when integrating MPS products into any application. MPS will not assume any legal responsibility for any said applications.

Mouser Electronics

Authorized Distributor

Click to View Pricing, Inventory, Delivery & Lifecycle Information:

[Monolithic Power Systems \(MPS\):](#)

[EV6605C-R-00A](#)