



The Future of Analog IC Technology®

# EV3398E-U-00A

## 4 strings WLED Controller With 80V Return Evaluation Board

### DESCRIPTION

The MP3398E is a step-up controller with four current channels designed to drive WLED arrays for large size LCD panel backlighting applications. The MP3398E is able to expand the number of LED channels with two or more ICs in parallel sharing a single power source.

The MP3398E employs peak-current mode with a fixed switching frequency. The frequency is programmable through an external setting resistor. The MP3398E drives an external MOSFET to boost up the output voltage from a 4.5V to 33V input supply and regulates the current in each LED string to the value set by an external current-setting resistor.

The MP3398E applies four internal current sources for current balancing. The current matching achieves 2.3% regulation accuracy between strings. The low regulation voltage on the LED current sources reduces power loss.

The MP3398E supports direct PWM dimming and analog dimming with PWM input. Full protection features include over-current protection (OCP), Over-temperature protection (OTP), Under-voltage protection (UVP), over-voltage protection (OVP), LED short/open protection, and inductor/diode short protection.

The MP3398E is available in TSSOP-16EP and PDIP-16 packages.

### ELECTRICAL SPECIFICATIONS

Parameter	Symbol	Value	Units
Input Voltage	$V_{IN}$	13 – 33	V
LEDs #		4 LED strings 20 LEDs/string	
LED Current	$I_{LED}$	120/string	mA

### FEATURES

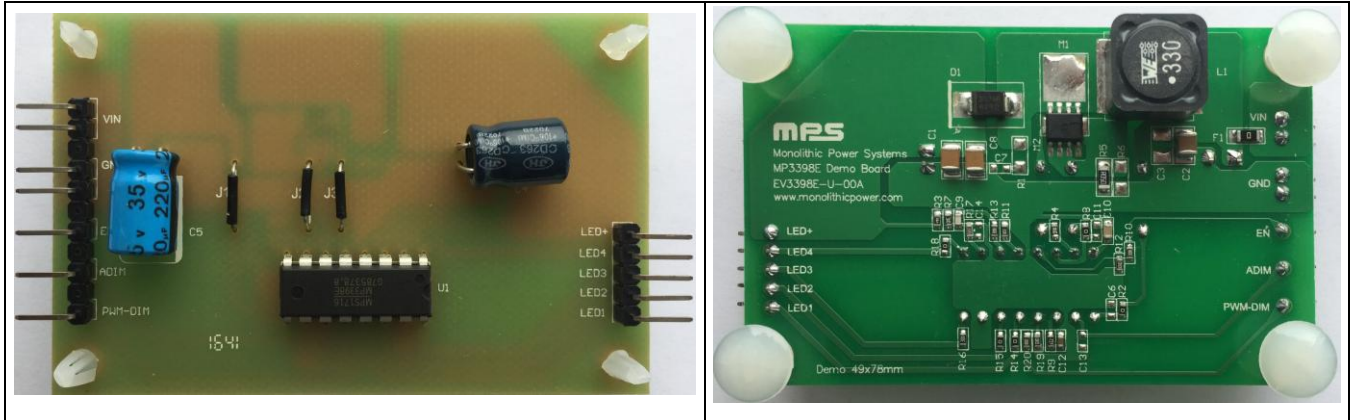
- 4-String, Max 400mA/String WLED Driver
- 4.5V to 33V Input Voltage Range
- 80V ABS. Rating for Each String
- 2.3% Current Matching Accuracy Between Each String
- Direct PWM Dimming Mode
- Analog Dimming Mode with PWM Input
- Cascading Capability with a Single Power Source
- LED Open and Short Protection
- Programmable Recoverable Over-Voltage Protection (OVP)
- 202mV Latch-off Cycle-by-Cycle Current Limit Threshold
- Latch-Off Over-Temperature Protection (OTP)
- Available in TSSOP-16EP and PDIP-16 Packages

### APPLICATIONS

- Desktop LCD Flat Panel Displays
- All-in-one PCs
- 2D/3D LCD TVs

All MPS parts are lead-free, halogen free, and adhere to the RoHS directive. For MPS green status, please visit MPS website under Quality Assurance. "MPS" and "The Future of Analog IC Technology" are Registered Trademarks of Monolithic Power Systems, Inc.

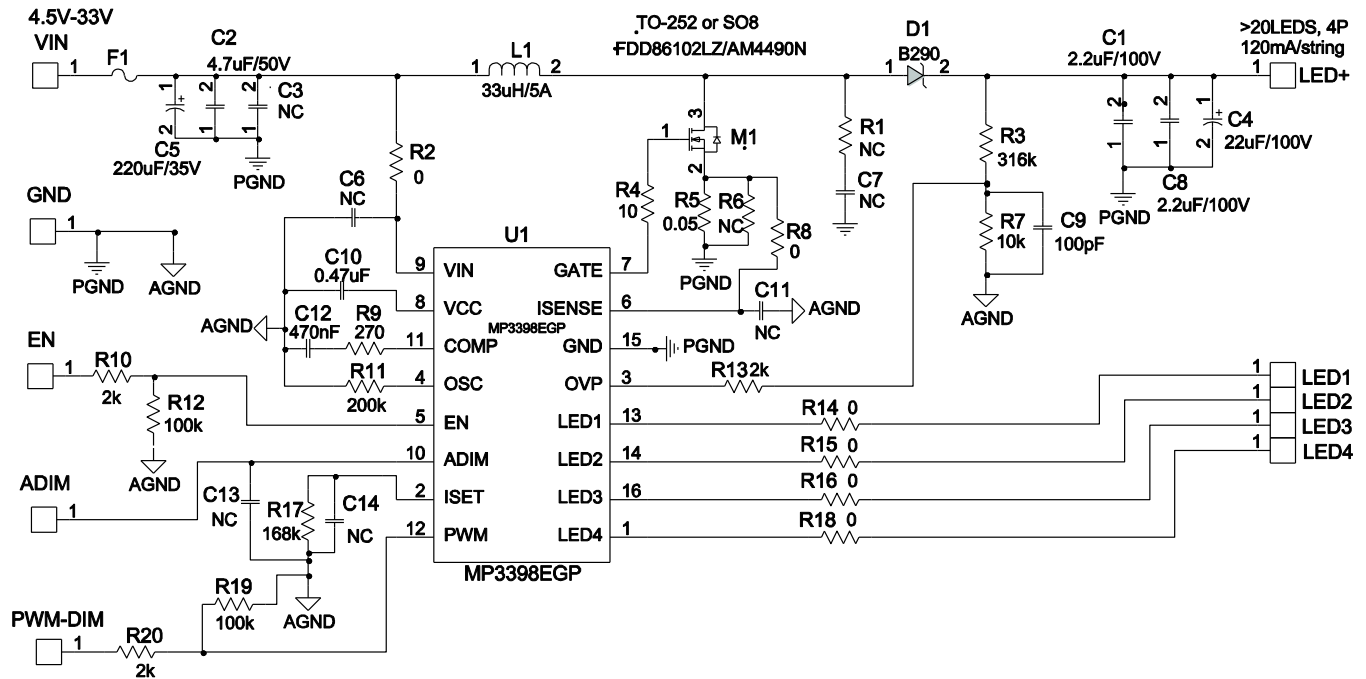
## EV3398E-U-00A EVALUATION BOARD



(L x W ) 7.75cm x 4.88cm

Board Number	MPS IC Number
EV3398E-U-00A	MP3398EGP

## EVALUATION BOARD SCHEMATIC



## EV3398E-U-00A BILL OF MATERIALS

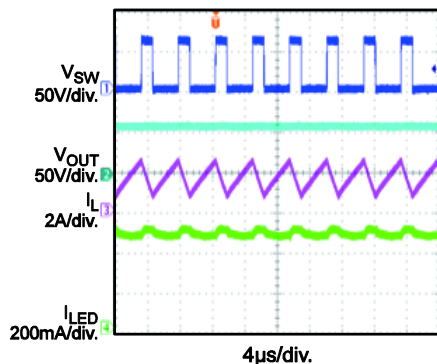
Qty	Ref	Value	Description	Package	Manufacturer	Part Number
2	C1,C8	2.2μF	Ceramic Capacitor, 100V, X7R	1210	Murata	GRM32ER72A225KA35L
1	C2	4.7μF	Ceramic Capacitor, 50V, X7R	1210	Murata	GRM32ER71H475KA88L
1	C3	NC		1210		
1	C4	22μF	Electrolytic Capacitor, 100V	DIP	JiangHai	CD263-100V22
1	C5	220μF	Electrolytic Capacitor, 35V	DIP	JiangHai	CD110-35V220
5	C6,C7, C11,C13, C14	NC		0603		
1	C9	100pF	Ceramic Capacitor, 50V, COG	0603	Murata	GRM1885C1H101JA01D
1	C10	470nF	Ceramic Capacitor, 16V, X7R	0805	Murata	GRM219R71C474KA01D
1	C12	470nF	Ceramic Capacitor, 16V, X7R	0603	Murata	GRM18R7C474KA88D
1	D1		Diode Schottky, 90V, 2A	SMB	Diodes Inc	B290
1	F1	0Ω	Resistor, 1%	1206	Yageo	RC1206FR-070RL
1	L1	33μH	Inductor, 5.5A, 45mohm	SMD	Würth	7447709330
1	M1		N- channel MOSFET	SO8	Analog Power	AM4490N
1	R1	NC		0603		
6	R2,R8, R14,R15, R16,R18	0Ω	Resistor, 1%	0603	Yageo	RC0603JR-070RL
1	R3	316kΩ	Resistor, 1%	0603	Yageo	RC0603FR-07316KL
1	R4	10Ω	Resistor, 1%	0603	Yageo	RC0603FR-0710RL
1	R5	0.05Ω	Current Resistor, 1%	1206	Yageo	RC1206FR-070R05L
1	R6	NC	Current Resistor, 1%	1206	Yageo	RC1206FR-070R05L
1	R7	10kΩ	Resistor, 1%	0603	Yageo	RC0603FR-0710KL
1	R9	270Ω	Resistor, 1%	0603	Yageo	RC0603FR-07270RL
3	R10,R13, R20	2kΩ	Resistor, 1%	0603	Yageo	RC0603FR-072KL
1	R11	200kΩ	Resistor, 1%	0603	Yageo	RC0603FR-07100KL
2	R12, R19	100kΩ	Resistor, 1%	0603	Yageo	RC0603FR-07100KL
	U1		LED Driver IC	PDIP-16	MPS	MP3398EGP

## EVB TEST RESULTS

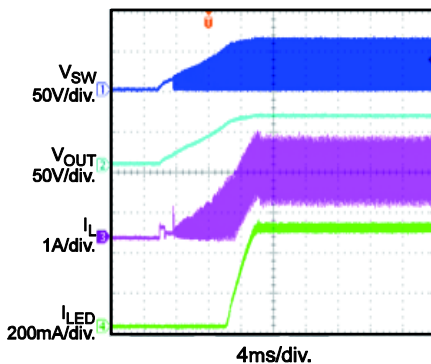
Performance waveforms are tested on the evaluation board.

$V_{IN} = 19V$ ,  $V_{EN} = 3.3V$ , 120mA/string, 4 strings, 20 LEDs in series,  $T_A = 25^\circ C$ , unless otherwise noted.

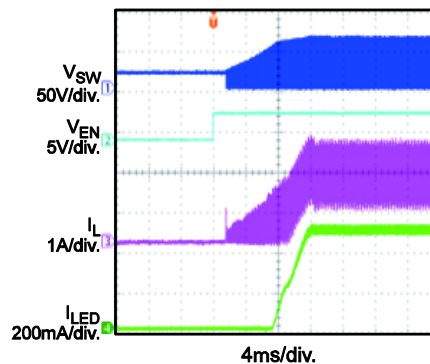
**Steady State**



**$V_{IN}$  Power On**

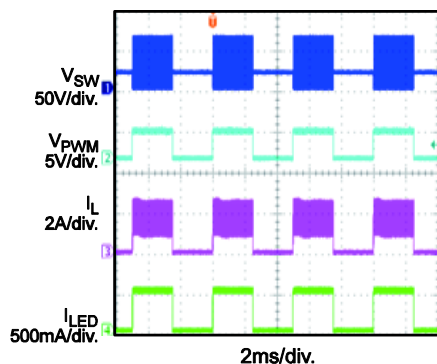


**EN On**



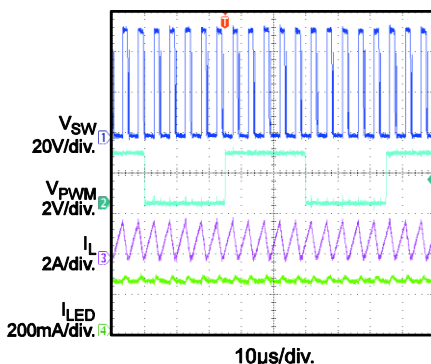
**PWM Dimming**

$f_{SW} = 200kHz$ ,  $D_{PWM} = 50\%$



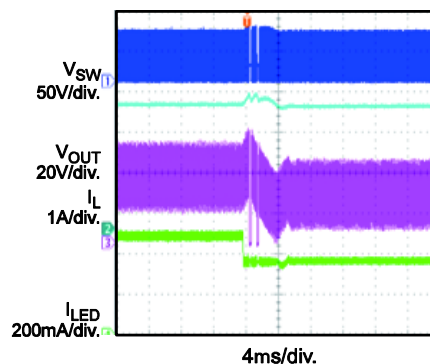
**Analog Dimming**

$f_{PWM} = 20kHz$ ,  $D_{PWM} = 50\%$



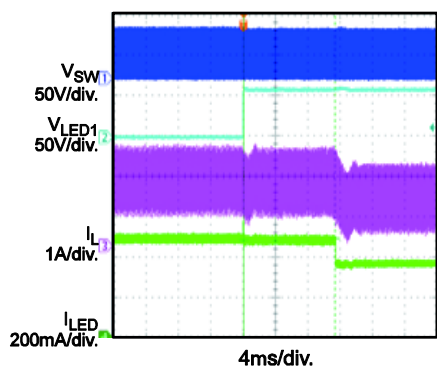
**Open LED Protection**

Open One LED String at Working

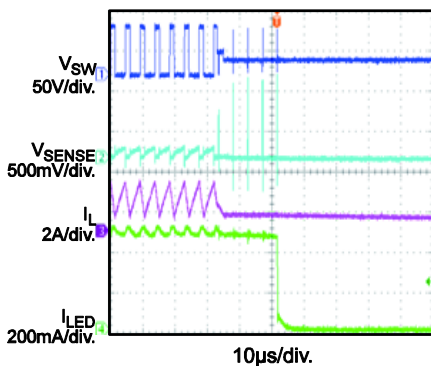


**Short LED Protection**

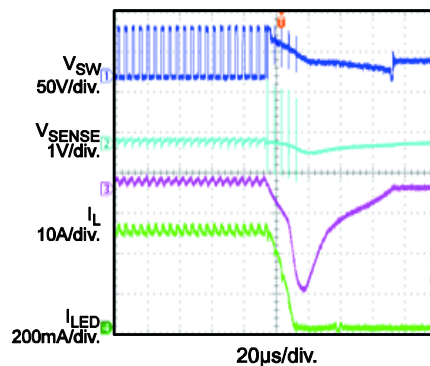
Short One LED String at Working



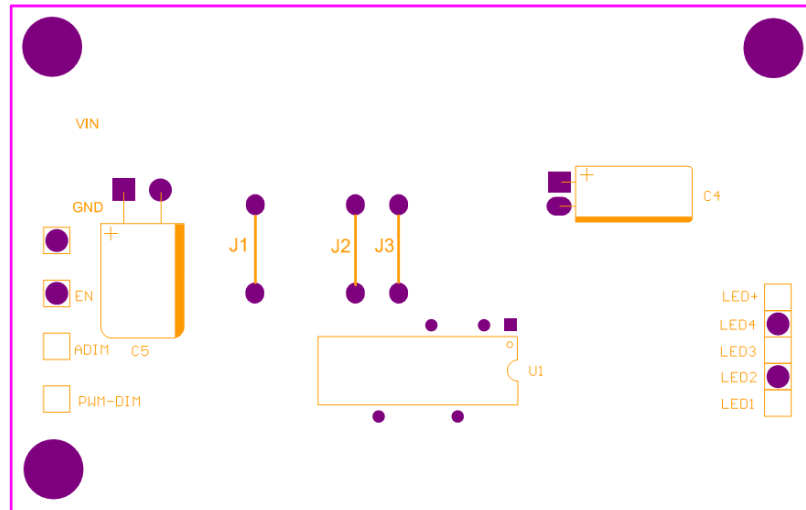
**Short-Inductor Protection**



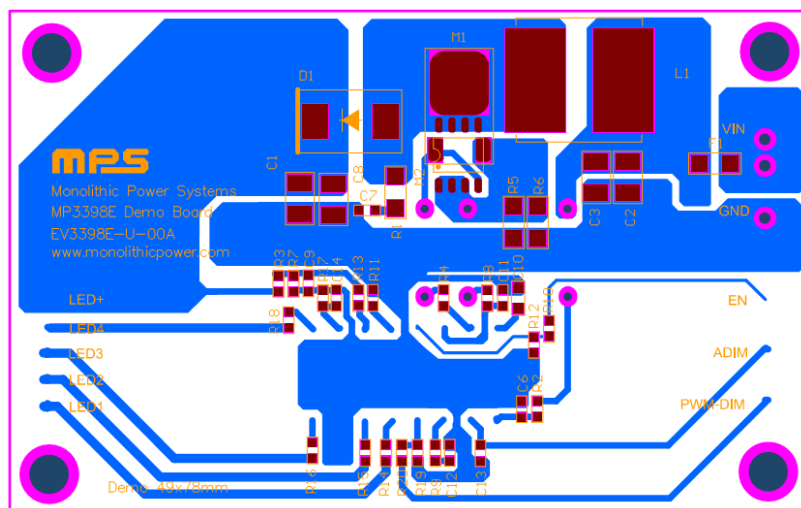
**Short-Diode Protection**



## PRINTED CIRCUIT BOARD LAYOUT



### Figure 1—Top Layer



### Figure 2—Bottom Layer

## QUICK START GUIDE

1. Connect the positive and negative terminals of the load panel (20 white LEDs in series, 4 strings) to the LED+ and LED1~4 pins on the EV board, respectively.
2. Connect the positive and negative terminals of the power supply (13V ~ 33V) to the VIN and GND pins on the EV board, respectively.
3. Drive EN pin high (5V) to enable the MP3398E.
4. For PWM dimming, apply a PWM rectangular waveform with a minimum voltage less than 0.4V and a maximum greater than 1.5V on PDIM pin. The frequency of the PWM signal is recommended between 200Hz to 2kHz.
5. For analog dimming, apply a PWM rectangular waveform with a minimum voltage less than 0.4V and a maximum greater than 1.5V on ADIM pin. The frequency of the PWM signal is recommended between >20kHz.

**NOTICE:** The information in this document is subject to change without notice. Users should warrant and guarantee that third party Intellectual Property rights are not infringed upon when integrating MPS products into any application. MPS will not assume any legal responsibility for any said applications.

# Mouser Electronics

Authorized Distributor

Click to View Pricing, Inventory, Delivery & Lifecycle Information:

[Monolithic Power Systems \(MPS\):](#)

[EV3398E-U-00A](#)