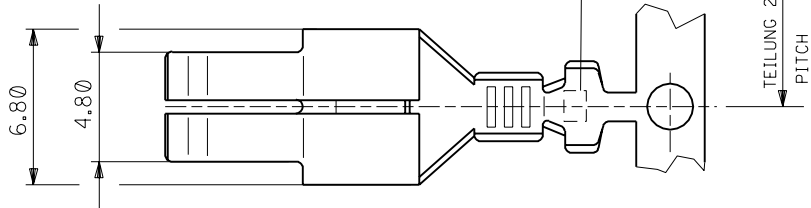
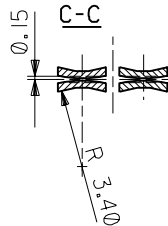
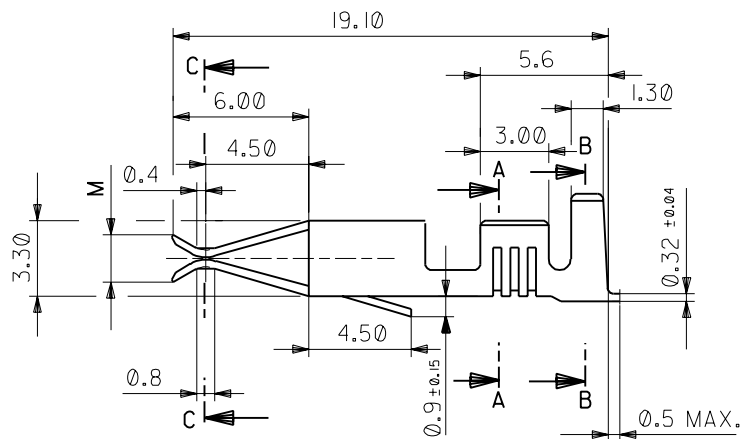


PART NO.
DWG. NO.

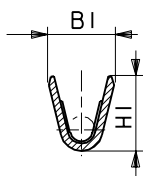


TRADEMARK: **MX-C**
(OUTSIDE/AUSSEN)

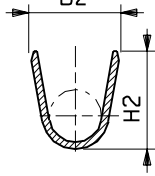
TEILUNG 20.32
PITCH



A-A

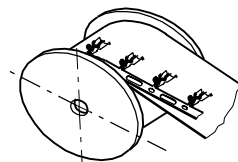


B-B



PART NUMBER TEIL NUMBER	WIRE RANGE DRAHT ISOL. BEREICH		DIM. CRIMP-RANGES DIM. CRIMP-BEREICHE				PARTS/ REEL TEILE/ ROLLE
	mm ²	Ømm	B1	B2	H1	H2	
			± 0,4			± 0,5	
85385-01XX	0.5-1.5	2.0-3.3	3.0	4.0	3.25	4.7	2500
85385-02XX	0.5-1.5	1.4-2.3	3.0	3.6	3.25	3.6	3000
85385-03XX	1.0-2.5	2.7-4.3	3.5	4.8	3.85	5.5	2000
85385-04XX	1.0-2.5	1.8-2.9	3.5	4.3	3.85	4.1	2500
85385-05XX	0.5-1.0	1.4-2.3	2.6	3.6	2.8	3.7	2500
85385-06XX	1.0-2.5	1.8-2.9	3.6	4.7	3.8	4.9	2500
85385-07XX	2.5-6.0	3.0-4.5	5.4	6.4	5.8	6.6	2000

FOR REDUCED INSULATION THICKNESS
FUER REDUZIERTE ISOLATIONS-DICKE



CODE: PART-NO./TEIL-NR.

XXXX - XXXX

MATERIAL+PLATING/
WERKSTOFF+PLATTIERUNG

WIRE DIM./DRAHT DIM.

0-PARTS ON BANDOLIER / KONTAKTE AM BAND
5-LOOSE PARTS / LOSE KONTAKTE

PRODUCT-BASE-NO./PRODUKT-BASIS-NR.

NORMAL REELING DIRECTION FOR FINISHED PARTS
NORMALE WICKELRICHTUNG FERTIGTEILE

PART NO. TEIL NR.	MATERIAL/WERKSTOFF	PLATING/PLATTIERUNG	M - 0.1
85385-XX01	PH. BRONZE KUPFER-ZINN-LEGIERUNG	HOT TIN DIP. FEUERVERZINNT	2.0
85385-XX02	BRASS MESSING	HOT TIN DIP. FEUERVERZINNT	2.0
85385-XX04	COPPER-IRON ALLOY K62 KUPFER-EISEN-LEGIERUNG	HOT TIN DIP. FEUERVERZINNT	2.0
85385-XX05	COPPER-IRON ALLOY K62 KUPFER-EISEN LEGIERUNG	HOT TIN DIP. FEUERVERZINNT	2.0

EC NO. MC2000-0463 DRWN: TR 00/11/29 CHK: HK APPR: KN		QUALITY SYMBOLS MAJOR CRITICAL C	GENERAL TOLERANCES: (UNLESS SPECIFIED) mm INCH 4 PLACES ±0. ±. 3 PLACES ±0. ±. 2 PLACES ±0.15 ±. 1 PLACE ±0.25 ±. ANGULAR: ± 1/2 °	SCALE 5: 1 DRAWN BY & DATE TR 00/06/30 CHECKED BY & DATE HK / / APPROVED BY & DATE KN / / CAD FILENAME	DESIGN UNITS <input checked="" type="checkbox"/> mm <input type="checkbox"/> INCH	THIRD ANGLE PROJECTION TITLE: FEMALE CONTACT MAXI-T	DIMENSIONS: <input type="checkbox"/> mm <input type="checkbox"/> INCH <input checked="" type="checkbox"/> mm ONLY	SHT REV REVISE ON CAD ONLY						
REV														
DRAFT WHERE APPLICABLE MUST REMAIN WITHIN DIMENSIONS					THIS DRAWING CONTAINS INFORMATION THAT IS PROPRIETARY TO MOLEX INCORPORATED AND SHOULD NOT BE USED WITHOUT WRITTEN PERMISSION.									
					MATERIAL NO. SEE CHART DRAWING NO. SD-85385-003 SHEET NO. 1 OF 1									

Mouser Electronics

Authorized Distributor

Click to View Pricing, Inventory, Delivery & Lifecycle Information:

Molex:

85385-0301