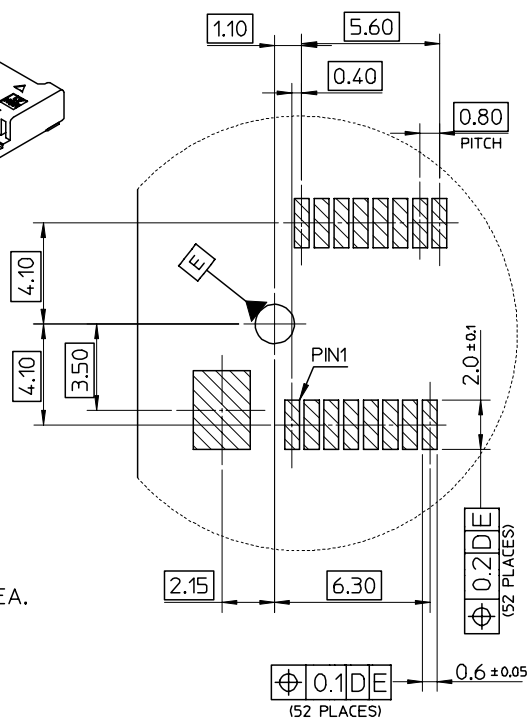


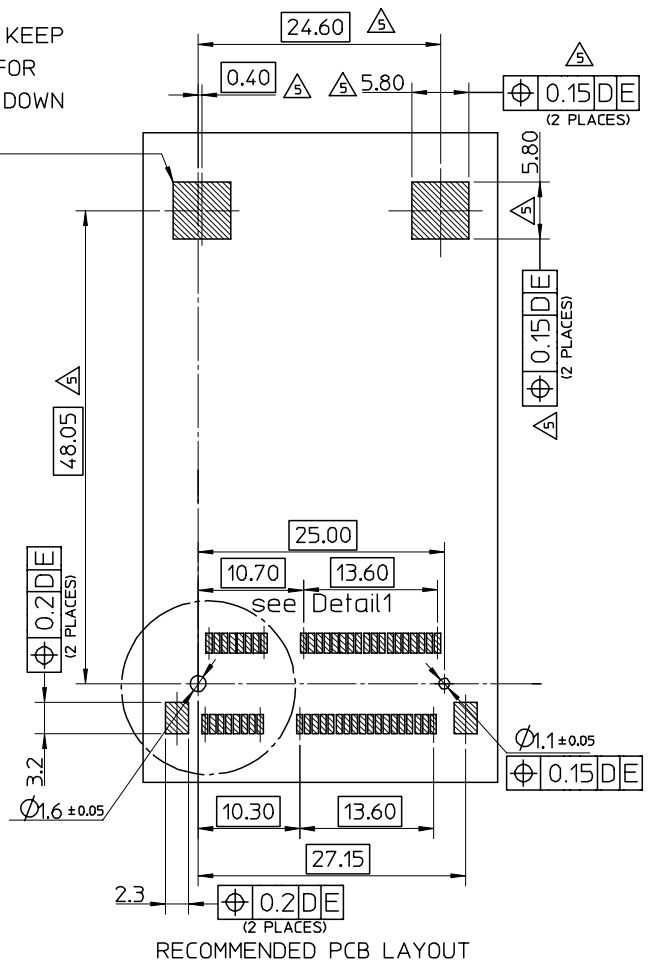
NOTES:

- MATERIALS:  
HOUSING:LCP,COLOR:BLACK, UL94V-0.  
CONTACT: PHOSPHOR BRONZE NAIL:BRASS
- FINISH  
CONTACT:SELECTIVE GOLD IN CONTACT AND SOLDER AREA.  
UNDERPLATED:NICKEL OVERALL  
NAIL:TIN IN SOLDER AREA.  
UNDERPLATED:NICKEL OVERALL.
- THE MODULE CARD REFERENCE MINI PCI EXPRESS CARD  
ELECTROMECHANICAL SPECIFICATION.
- DATUM D IS THE TOP SURFACE OF PCB.
- IF THE CONNECTOR USED WITH 48099-00\*\*,LATCH SIDE  
RECOMMENDED PCB LAYOUT REFERS TO SD-48099-0\*\*.
- PART 67910\*\*\*\* COMPLIANT TO ROHS DIRECTIVE 2002/95/EC  
AND ELV DIRECTIVE 2000/53/EC.



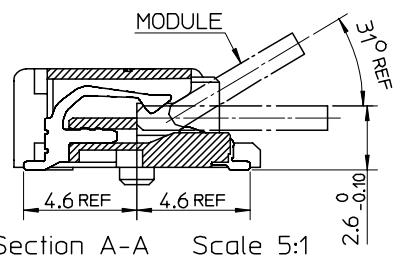
Detail1  
Scale 5:1

COMPONENT KEEP  
OUT AREA FOR  
CARD HOLD DOWN  
SOLUTION



RECOMMENDED PCB LAYOUT

679100002	10 MICROINCH GOLD
679101002	GOLD FLASH



Section A-A Scale 5:1

RELEASED EC NO: SH2007-0020 2006/08/02 DRWN:DHU 2006/08/02 CHKD:HARVEY 2006/08/02 APPR: JNCHEN 2006/08/09	DESCRIPTION	QUALITY SYMBOLS	GENERAL TOLERANCES (UNLESS SPECIFIED)	DIMENSION STYLE	SCALE	DESIGN UNITS	THIRD ANGLE PROJECTION													
		$\nabla=0$ $\triangle=0$	<table border="1"> <thead> <tr> <th></th> <th>mm</th> <th>INCH</th> </tr> </thead> <tbody> <tr> <td>4 PLACES</td> <td>± ---</td> <td>± ---</td> </tr> <tr> <td>3 PLACES</td> <td>± ---</td> <td>± ---</td> </tr> <tr> <td>2 PLACES</td> <td>± 0.25</td> <td>± ---</td> </tr> <tr> <td>1 PLACE</td> <td>± 0.25</td> <td>± ---</td> </tr> </tbody> </table>		mm	INCH	4 PLACES	± ---	± ---	3 PLACES	± ---	± ---	2 PLACES	± 0.25	± ---	1 PLACE	± 0.25	± ---	MM ONLY	2:1
	mm	INCH																		
4 PLACES	± ---	± ---																		
3 PLACES	± ---	± ---																		
2 PLACES	± 0.25	± ---																		
1 PLACE	± 0.25	± ---																		
DRAWN BY		DATE		TITLE																
J. CHIANG		2003/02/25		MINI PCI EXPRESS CONN. 0.8 MM PITCH 52CIRCUIT 4.0MM H																
CHECKED BY		DATE		MOLEX INCORPORATED																
C. WILSON		2003/03/06		DOCUMENT NO. SD-67910-001 SHEET NO. 1 OF 2																
APPROVED BY		DATE		SEE TABLE																
L. ERICK		2003/03/06		THIS DRAWING CONTAINS INFORMATION THAT IS PROPRIETARY TO MOLEX INCORPORATED AND SHOULD NOT BE USED WITHOUT WRITTEN PERMISSION																
MATERIAL NO.		SIZE																		
		A3																		

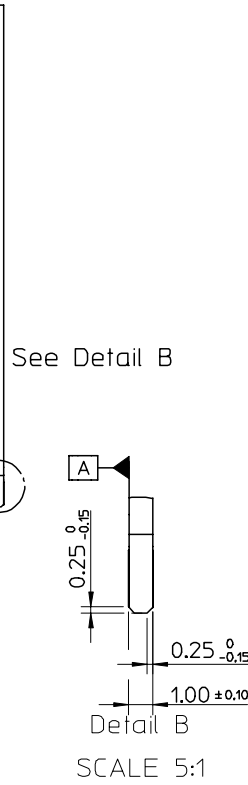
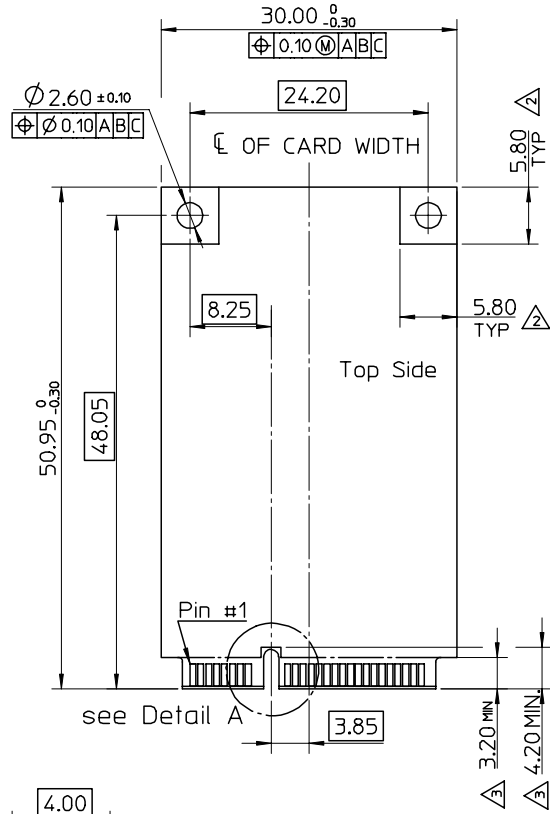
10 9 8 7 6 5 4 3 2 1

NOTES;

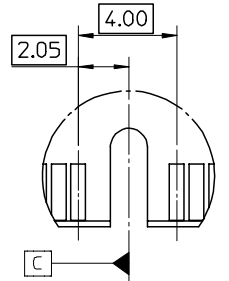
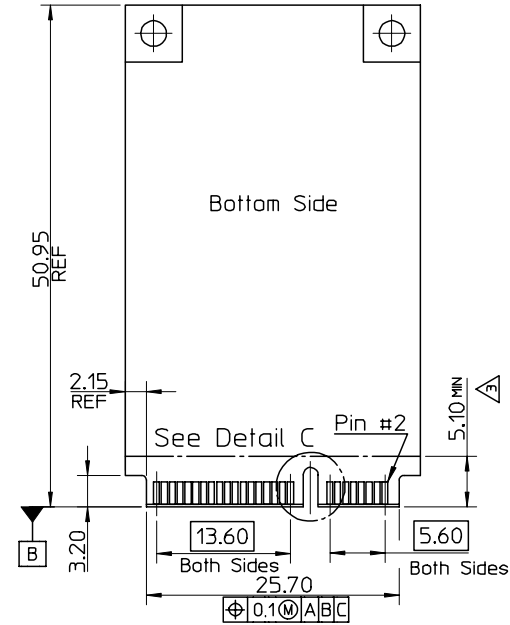
1. PIN NUMBERING REFERENCE:

ODD PINS - TOP SIDE  
EVEN PINS - BOTTOM SIDE

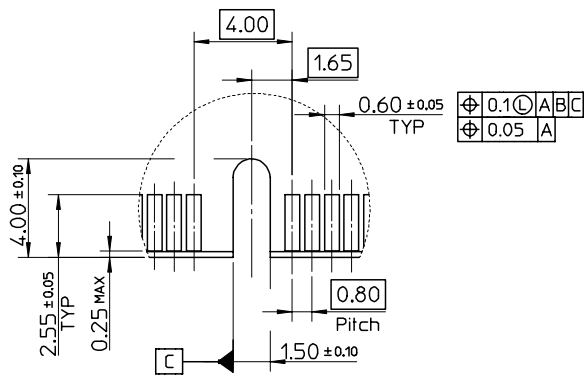
- △ COMPONENT AND ROUTING (ALL LAYERS)  
KEEP OUT AREA FOR HOLD DOWN SOLUTIONS.
- △ COMPONENT KEEP OUT AREA FOR CONNECTOR.



Detail B  
SCALE 5:1



Detail C  
SCALE 5:1



Detail A  
Scale 5:1

RELEASED EC NO: SH2007-0020 2006/08/02 DRWN:DHU CHKD:HARVEY APPR: JNCHEM 2006/08/02 2006/08/09	QUALITY SYMBOLS ▽=0 △=0	GENERAL TOLERANCES (UNLESS SPECIFIED)		DIMENSION STYLE MM ONLY		SCALE 1:1	DESIGN UNITS METRIC	THIRD ANGLE PROJECTION	
		mm	INCH	DRAWN BY J. CHIANG	DATE 2003/02/25	TITLE MINI PCI EXPRESS CONN. 0.8 MM PITCH 52CIRCUIT 4.0MM H			
REV C	DESCRIPTION	4 PLACES	± ---	± ---	CHECKED BY C. WILSON	DATE 2003/03/06	MOLEX INCORPORATED		
		3 PLACES	± ---	± ---	APPROVED BY L. ERICK	DATE 2003/03/06	DOCUMENT NO. SD-67910-001		SHEET NO. 2 OF 2
DRAFT WHERE APPLICABLE MUST REMAIN WITHIN DIMENSIONS		SEE TABLE		MATERIAL NO.					
THIS DRAWING CONTAINS INFORMATION THAT IS PROPRIETARY TO MOLEX INCORPORATED AND SHOULD NOT BE USED WITHOUT WRITTEN PERMISSION									

9 8 7 6 5 4 3 2 1

# Mouser Electronics

Authorized Distributor

Click to View Pricing, Inventory, Delivery & Lifecycle Information:

[Molex:](#)

[67910-0002](#)