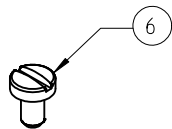


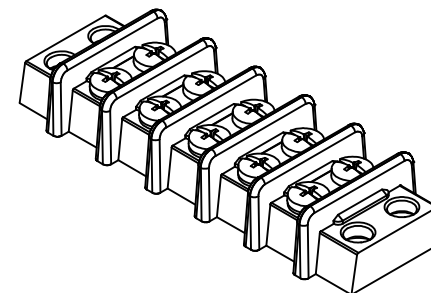
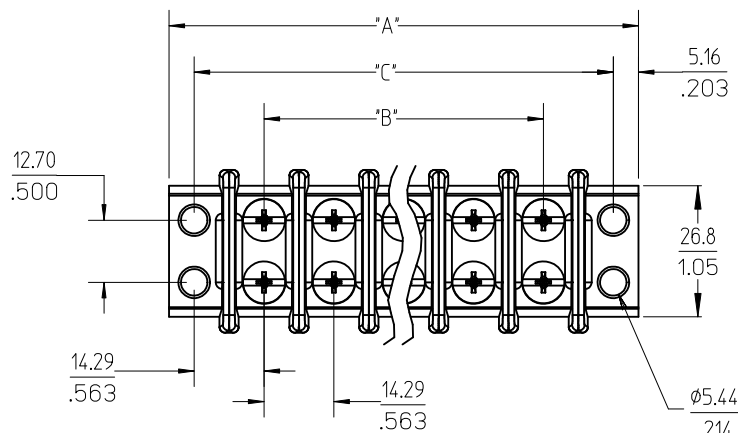
REF. -50 OPT. SCREW  
(WHERE APPLICABLE)



REF. -56 OPT. SCREW  
(WHERE APPLICABLE)

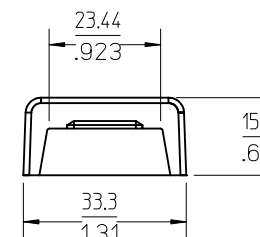
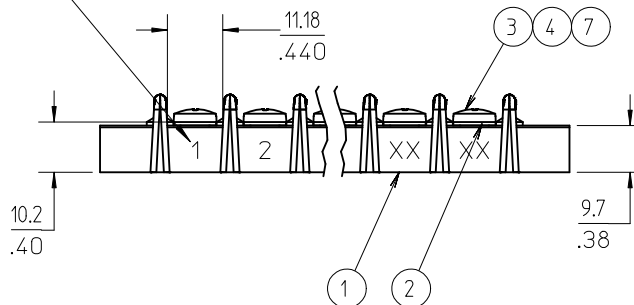
NOTES:

1. MATERIAL: SEE TABLE
2. FINISHES: SEE TABLE
3. PRODUCT SPECIFICATION: NOT REQUIRED
4. IMPRINTING STYLE -10A (ONE SIDE)  
IMPRINT TEXT TO BE .135" HEIGHT.
5. "XX" REFERS TO THE QUANTITY OF CIRCUITS.
6. ROHS COMPLIANT.



5 CIRCUIT SHOWN

IMPRINTING FOR  
OPTION -10A ONLY  
(SEE NOTE 4)



ITEM	QTY.	DESCRIPTION	MATERIAL	FINISH	UPDATE SHEET 2 TABLE EC NO: WNA2010-0297 D/WRN: JENC INAS 2009/10/29 CHKD: CYORK 2009/12/01 APPR: JMACNEIL 2009/12/01	QUALITY SYMBOLS ▽=0 ▽=0	GENERAL TOLERANCES (UNLESS SPECIFIED)	DIMENSION STYLE MM/IN	SCALE 1:1	DESIGN UNITS INCH	THIRD ANGLE PROJECTION	TITLE 14.29MM [.563] DOUBLE ROW PHENOLIC BTS ASSEMBLY	DOCUMENT NO. SD-38210-001	SHEET NO. 1 OF 2
7	XX*2	SCREW #8-32X.312 PHLP STAINLESS (OPT -53-56)	STEEL	PASSIVATE			4 PLACES ± --- ± ---							
6	XX*2	SCREW #8-32X.312 SLOT STAINLESS (OPT -56)	STEEL	PASSIVATE			3 PLACES ± --- ± .005							
5	XX*2	SCREW #8-32X.312 PAN PHSLZN/BR/STEEL -50	STEEL	ZN, CLEAR CHROMATE			2 PLACES ± 0.13 ± .01							
4	XX*2	SCREW #8-32X.312 BHD PHSLNI/BRASS -49	BRASS	NICKEL PLATE			1 PLACE ± 0.3 ± ---							
3	XX*2	SCREW, #8-32 X .312, BHD, PHIL-SLOT	STEEL	ZN, CLEAR CHROMATE			ANGULAR ± 2 °							
2	XX	TERMINAL, EYELET, TWIN	BRASS	NICKEL PLATE										
1	1	INSULATOR, AS CUT	PHENOLIC	BLACK										
							DRAFT WHERE APPLICABLE MUST REMAIN WITHIN DIMENSIONS	SEE SHEET 2		THIS DRAWING CONTAINS INFORMATION THAT IS PROPRIETARY TO MOLEX INCORPORATED AND SHOULD NOT BE USED WITHOUT WRITTEN PERMISSION				

10 9 8 7 6 5 4 3 2 38210

QTY. OF CIRC. "XX"	DIM. "A"	DIM. "B"	DIM. "C"	MATERIAL NO. (STANDARD)	MATERIAL NO. (-49 OPTION)	MATERIAL NO. (-50 OPTION)	MATERIAL NO. (-59 OPTION)	MATERIAL NO. (-49-59 OPTION)	MATERIAL NO. (-56 OPTION)	MATERIAL NO. (-53-56 OPTION)	MATERIAL NO. (-10A OPTION)	MATERIAL NO. (-10A-49 OPTION)	MATERIAL NO. (-10A-50 OPTION)
02	53.2 [2.09]	14.3 [.56]	42.8 [1.69]	382100102	382100202	382100302	382190067	382190247	382190191	382190063	382100502	- - -	- - -
03	67.5 [2.66]	28.6 [1.13]	57.1 [2.25]	382100103	382100203	382100303	382190069	382190248	382190057	382190195	382100503	- - -	- - -
04	81.7 [3.22]	42.8 [1.69]	71.4 [2.81]	382100104	382100204	382100304	382190080	382190083	382190081	- - -	382100504	- - -	- - -
05	96.0 [3.78]	57.1 [2.25]	85.7 [3.38]	382100105	382100205	382100305	382190090	382190092	382190132	- - -	382100505	- - -	- - -
06	110.3 [4.34]	71.4 [2.81]	100.0 [3.94]	382100106	382100206	382100306	382190109	382190110	382190221	- - -	382100506	382190155	382190156
07	124.6 [4.91]	85.7 [3.38]	114.3 [4.50]	382100107	382100207	382100307	382190200	382190130	382190203	382190129	382100507	- - -	- - -
08	138.9 [5.47]	100.0 [3.94]	128.5 [5.06]	382100108	382100208	382100308	382190011	- - -	382190010	- - -	382100508	- - -	- - -
09	153.2 [6.03]	114.3 [4.50]	142.8 [5.63]	382100109	382100209	382100309	- - -	- - -	382190192	- - -	382100509	- - -	- - -
10	167.5 [6.59]	128.5 [5.06]	157.1 [6.19]	382100110	382100210	382100310	382190202	382190020	382190022	- - -	382100510	- - -	- - -
11	181.8 [7.16]	142.8 [5.63]	171.4 [6.75]	382100111	382100211	382100311	382190047	- - -	382190255	- - -	382100511	- - -	- - -
12	196.0 [7.72]	157.1 [6.19]	185.7 [7.31]	382100112	382100212	382100312	382190030	- - -	382190056	- - -	382100512	- - -	- - -
13	210.3 [8.28]	171.4 [6.75]	200.0 [7.88]	382100113	382100213	382100313	- - -	- - -	- - -	- - -	382100513	- - -	- - -
14	224.6 [8.84]	185.7 [7.31]	214.3 [8.44]	382100114	382100214	382100314	- - -	- - -	- - -	382190032	382100514	- - -	- - -
15	238.9 [9.41]	200.0 [7.88]	228.6 [9.00]	382100115	382100215	382100315	- - -	- - -	- - -	- - -	382100515	- - -	- - -
16	253.2 [9.97]	214.3 [8.44]	242.8 [9.56]	382100116	382100216	382100316	- - -	- - -	382190254	- - -	382100516	- - -	- - -
17	267.5 [10.53]	228.6 [9.00]	257.1 [10.13]	382100117	382100217	382100317	- - -	- - -	- - -	- - -	382100517	- - -	- - -
18	281.8 [11.09]	242.8 [9.56]	271.4 [10.69]	382100118	382100218	382100318	- - -	- - -	382190198	- - -	382100518	- - -	- - -
19	296.1 [11.66]	257.1 [10.13]	285.7 [11.25]	382100119	382100219	382100319	- - -	- - -	- - -	- - -	382100519	- - -	- - -
20	310.3 [12.22]	271.4 [10.69]	300.0 [11.81]	382100120	382100220	382100320	- - -	- - -	- - -	- - -	382100520	- - -	- - -
21	324.6 [12.78]	285.7 [11.25]	314.3 [12.38]	382100121	382100221	382100321	- - -	- - -	- - -	- - -	382100521	- - -	- - -
22	338.9 [13.34]	300.0 [11.81]	328.6 [12.94]	382100122	382100222	382100322	- - -	- - -	- - -	- - -	382100522	- - -	- - -
23	353.2 [13.91]	314.3 [12.38]	342.9 [13.50]	382100123	382100223	382100323	- - -	- - -	- - -	- - -	382100523	- - -	- - -
24	367.5 [14.47]	328.6 [12.94]	357.1 [14.06]	382100124	382100224	382100324	- - -	- - -	- - -	- - -	382100524	- - -	- - -
25	381.8 [15.03]	342.9 [13.50]	371.4 [14.63]	382100125	382100225	382100325	- - -	- - -	- - -	- - -	382100525	- - -	- - -
26	396.1 [15.59]	357.1 [14.06]	385.7 [15.19]	382100126	382100226	382100326	- - -	- - -	- - -	- - -	382100526	- - -	- - -
27	410.4 [16.16]	371.4 [14.63]	400.0 [15.75]	382100127	382100227	382100327	- - -	- - -	- - -	- - -	382100527	- - -	- - -
28	424.7 [16.72]	385.7 [15.19]	414.3 [16.31]	382100128	382100228	382100328	- - -	- - -	- - -	- - -	382100528	- - -	- - -
29	439.0 [17.28]	400.0 [15.75]	428.6 [16.87]	382100129	382100229	382100329	- - -	- - -	- - -	- - -	382100529	- - -	- - -
30	453.3 [17.85]	414.3 [16.31]	442.9 [17.44]	382100130	382100230	382100330	- - -	- - -	- - -	- - -	382100530	- - -	- - -

UPDATE TABLE EC NO: WNA2010-0297 2009/10/29 DRAWN: JENC INAS 2009/12/01 CHKD: CYORK 2009/12/01 APPR: JMACNE IL 2009/12/01	QUALITY SYMBOLS   	GENERAL TOLERANCES (UNLESS SPECIFIED)		DIMENSION STYLE MM/IN		SCALE 1:1	DESIGN UNITS INCH	THIRD ANGLE PROJECTION	
		mm INCH		DRAWN BY DATE C. YORK 2004/11/22		TITLE 14.29MM [.563] DOUBLE ROW PHENOLIC BTS ASSEMBLY			
		4 PLACES ± --- ± --- 3 PLACES ± --- ± .005 2 PLACES ± 0.13 ± .01 1 PLACE ± 0.3 ± ---		CHECKED BY DATE G. ROBERTSON 2004/12/01					
		ANGULAR ± 2 °		APPROVED BY DATE G. ROBERTSON 2004/12/01		MOLEX MOLEX INCORPORATED			
		DRAFT WHERE APPLICABLE MUST REMAIN WITHIN DIMENSIONS		MATERIAL NO. SEE CHART					
REV		SIZE B		THIS DRAWING CONTAINS INFORMATION THAT IS PROPRIETARY TO MOLEX INCORPORATED AND SHOULD NOT BE USED WITHOUT WRITTEN PERMISSION					

9 8 7 6 5 4 3 2 1

# Mouser Electronics

Authorized Distributor

Click to View Pricing, Inventory, Delivery & Lifecycle Information:

## Molex:

[38210-0219](#) [38210-0217](#) [38210-0113](#) [38210-0119](#) [38210-0120](#) [38210-0121](#) [38210-0122](#) [38210-0123](#) [38210-0125](#) [38210-0126](#) [38210-0202](#) [38210-0207](#) [38210-0208](#) [38210-0209](#) [38210-0211](#) [38210-0213](#) [38210-0214](#) [38210-0215](#) [38210-0218](#) [38210-0220](#) [38210-0221](#) [38210-0222](#) [38210-0223](#) [38210-0224](#) [38210-0226](#) [38210-0302](#) [38210-0304](#) [38210-0305](#) [38210-0307](#) [38210-0309](#) [38210-0311](#) [38210-0312](#) [38210-0313](#) [38210-0314](#) [38210-0316](#) [38210-0320](#) [38210-0324](#) [38210-0506](#) [38210-0101](#) [38210-0201](#) [38210-0318](#) [38210-0503](#) [38210-0505](#) [38210-0508](#) [38210-0510](#) [38210-0512](#) [38210-0514](#) [38210-0515](#) [38210-0518](#) [38210-0525](#) [38210-0115](#) [38210-0210](#) [38210-0303](#) [38210-0319](#)