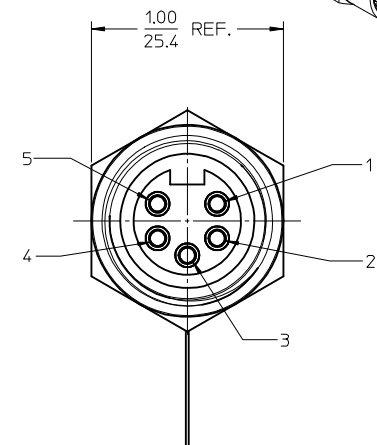
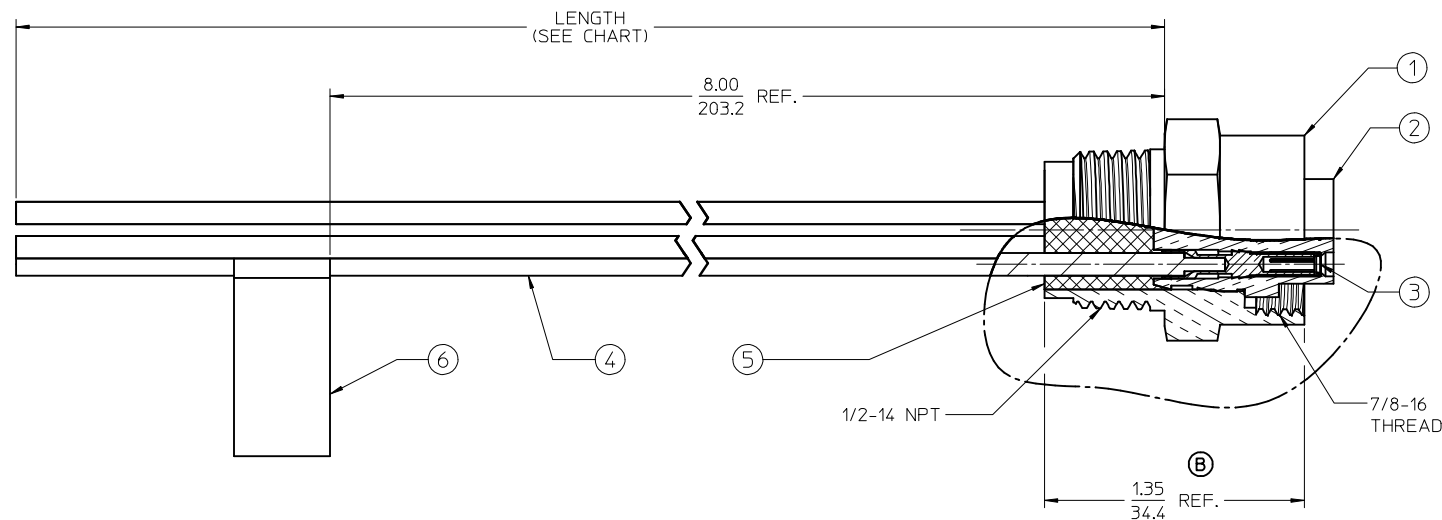
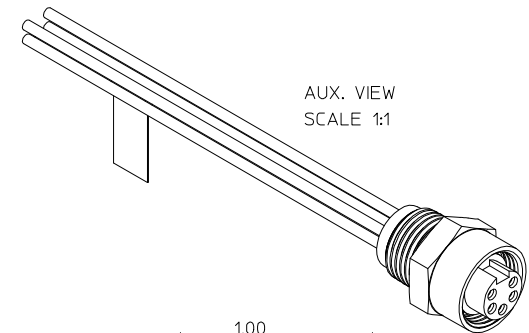
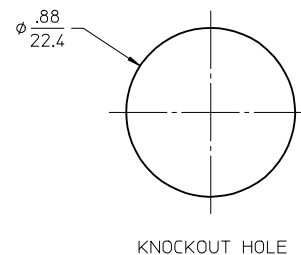


13	12	11	10	9	8	7	6	5	4	3	2	1
MATERIAL NO.		ENGINEERING NO.		LENGTH								
1300130417		1R5000A20A120		12.0" +.75 -0 (0.3M + 19.1mm -0)		(B)						
1300130421		1R5000A20F030		3' 0" +1.75 -0 (0.9M + 44.5mm -0)		(B)						
1300130423		1R5000A20F060		6' 0" +2.19 -0 (1.8M + 55.6mm -0)		(B)						
1300130426		1R5000A20M020		6' 7" +3.50 -0 (2.0M + 88.9mm -0)								



- NOTES:
1. MATERIAL: SEE TABLE
 2. FINISHES: SEE TABLE
 3. MATES WITH: 5C MINI CHANGE CABLE
 4. ELECTRICAL SPECIFICATIONS:
VOLTAGE RATING: 600V AC/DC
CURRENT RATING: 8.0 AMPS
 5. ASSEMBLY IS RoHS COMPLIANT



WHITE	1
RED	2
GREEN/YELLOW	3
ORANGE	4
BLACK	5

WIRE DIAGRAM

6	1	LABEL	VINYL (B)	BLACK/YELLOW
5	1	POTTING MATERIAL	EPOXY	
4	5	WIRE, 16 AWG	PVC INSULATION	SEE WIRE DIAGRAM
3	5	CONTACT SOCKET & SLEEVE ASSY.	Cu ALLOY/ST.STEEL	GOLD PLATED
2	1	INSERT	PVC	YELLOW
1	1	RECEPTACLE SHELL	DIE-CAST ZINC (B)	NICKEL PLATED (B)
ITEM	QTY.	DESCRIPTION	MATERIAL	FINISH

ADD P/NS, REV'D PER BOM	2013/05/06
EC NO: IPG2013-1710	2013/05/08
DRWN:RSTONE	2013/05/15
CHKD:K JOZWIK	
APPR:RWOODMAN	
REV	DESCRIPTION
B	

QUALITY SYMBOLS
▽=0
▽=0

GENERAL TOLERANCES (UNLESS SPECIFIED)	
mm	INCH
4 PLACES ± ---	± ---
3 PLACES ± ---	± ---
2 PLACES ± ---	± .01
1 PLACE ± 0.3	± ---
ANGULAR ± 1/2°	
DRAFT WHERE APPLICABLE MUST REMAIN WITHIN DIMENSIONS	

DIMENSION STYLE	
IN/MM	
DRAWN BY	DATE
R.STONE	2009/08/25
CHECKED BY	DATE
B.WOODMAN	2009/08/27
APPROVED BY	DATE
JFMURPHY	2009/08/26
MATERIAL NO.	
SEE CHART	
SIZE	
C	

SCALE 2:1	DESIGN UNITS INCH	THIRD ANGLE PROJECTION
TITLE		
MINI-CHANGE, RECEPTACLE 5P, FEMALE, 16 AWG		
MOLEX INCORPORATED		
DOCUMENT NO.		SHEET NO.
SD-130013-087		1 OF 1
THIS DRAWING CONTAINS INFORMATION THAT IS PROPRIETARY TO MOLEX INCORPORATED AND SHOULD NOT BE USED WITHOUT WRITTEN PERMISSION		

Mouser Electronics

Authorized Distributor

Click to View Pricing, Inventory, Delivery & Lifecycle Information:

Molex:

[1300130421](#) [1300130417](#)